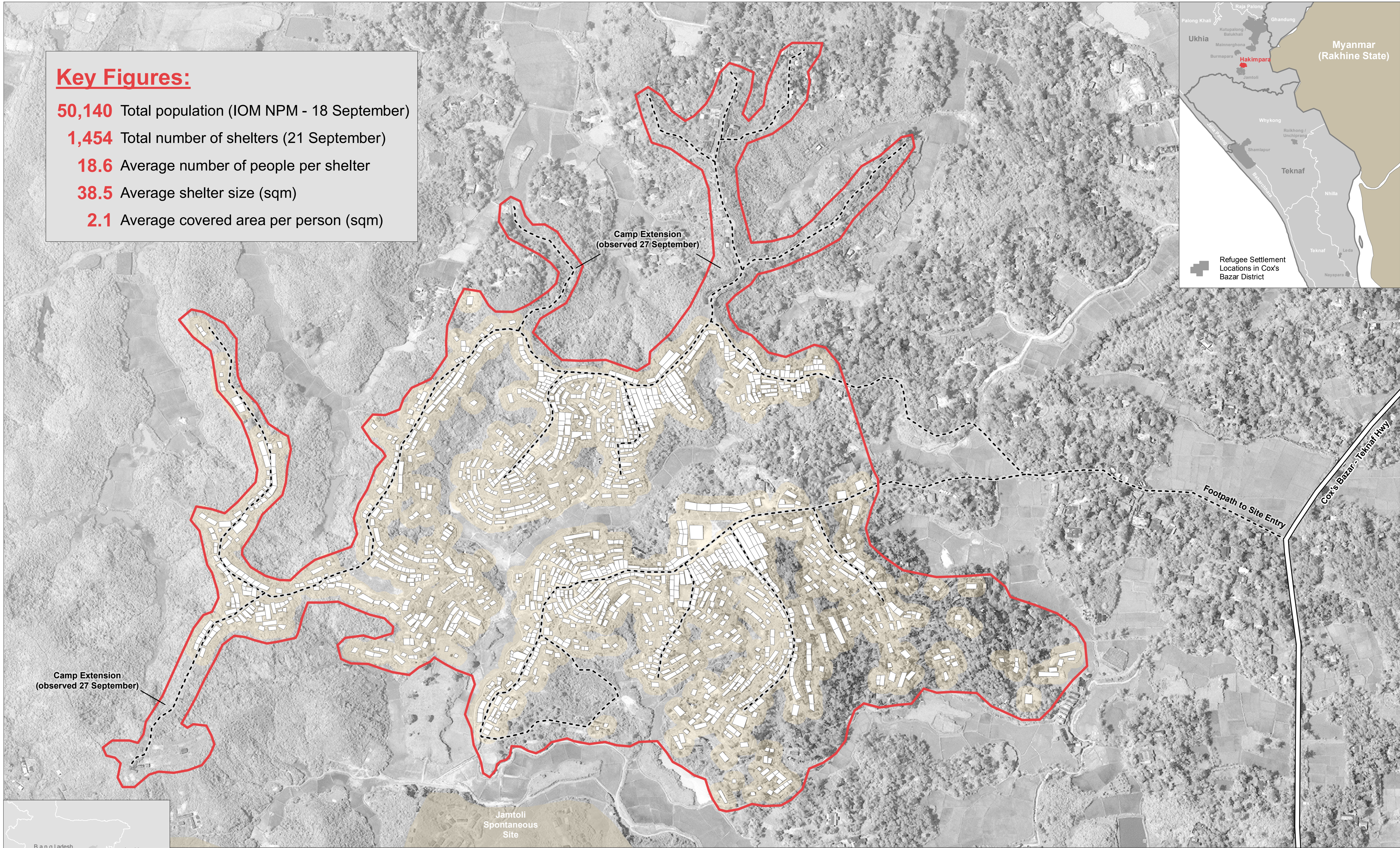
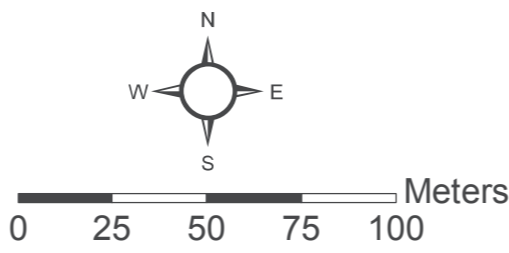


Key Figures:

- 50,140** Total population (IOM NPM - 18 September)
- 1,454** Total number of shelters (21 September)
- 18.6** Average number of people per shelter
- 38.5** Average shelter size (sqm)
- 2.1** Average covered area per person (sqm)



- Site Boundary (observed 27 September)
- Primary Footpaths
- Shelter Footprints (as of 21 September)
- Main Road
- Settled Area (approximate)
- Adjacent Refugee Site



Data Sources:
Site Boundaries - REACH / OCHA ROAP
Shelter Footprints - REACH / UNOSAT
Footpaths - REACH
Satellite Imagery: WorldView-1 from 21 September 2017
Copyright: ©2017 DigitalGlobe
Source: US Department of State, Humanitarian Information Unit, NextView License.
Coordinate System: GCS WGS 1984
File: reach_bgd_map_coxsbazar_hakimpara_shelter_27092017_a1
Contact: reach.mapping@impact-initiatives.org

Note: Data, designations and boundaries contained on this map are not warranted to be error-free and do not imply acceptance by the REACH partners, associates or donors mentioned on this map.

In support of the

WASH Cluster
Water Sanitation Hygiene

Funded by

USAID
FROM THE AMERICAN PEOPLE

Humanitarian Aid and Civil Protection

In partnership with

UNOSAT
UNOSAT is a joint venture between ESA and CNES.

An initiative of
IMPACT Initiatives
ACTED and UNOSAT

REACH