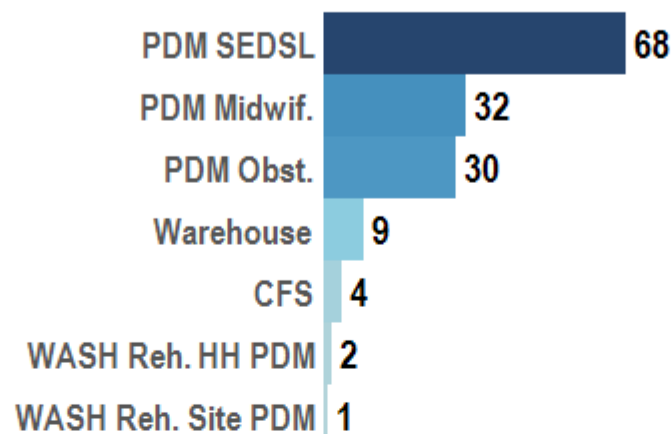


Key figures

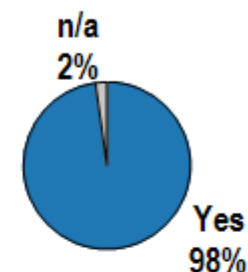
- 146** completed monitoring activities
- 137** post-distribution monitorings
- 46** communities covered
- 26** sub-district covered
- 18** IPs monitored
- 9** warehouse monitoring

Monitoring per type



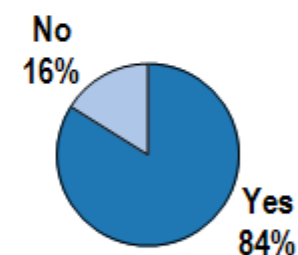
Midwifery PDM

Were all the distributed items useful?

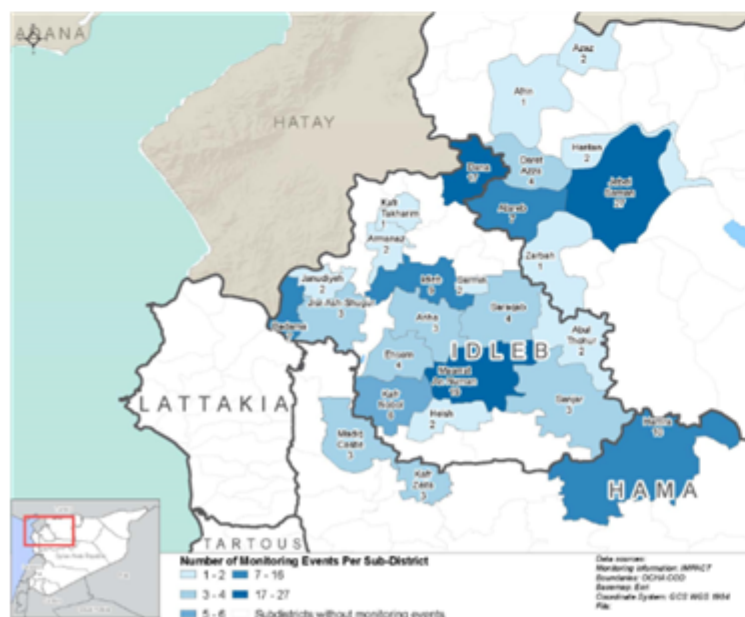


Obstetric PDM

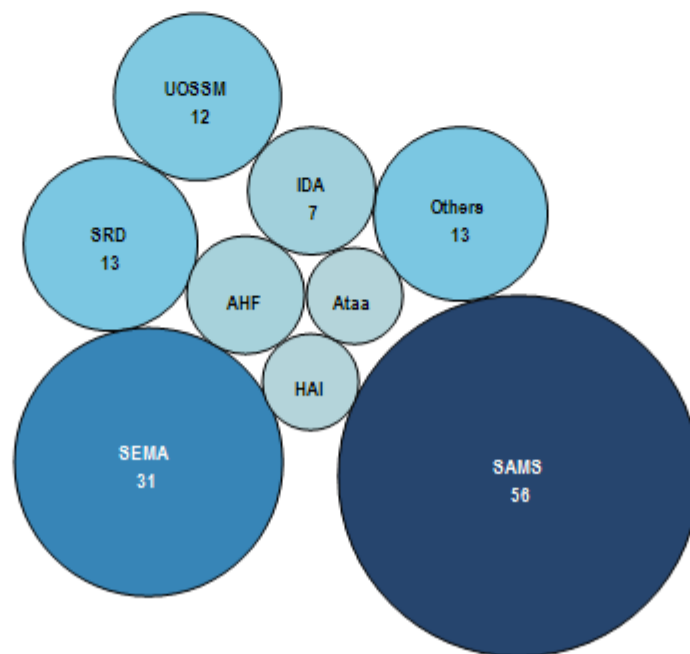
Were all the distributed items useful?



Monitoring per sub-district



Monitoring per IP



SEDSL PDM

Were all the distributed items useful?

