



# Adamawa and Borno - Population movement and communication

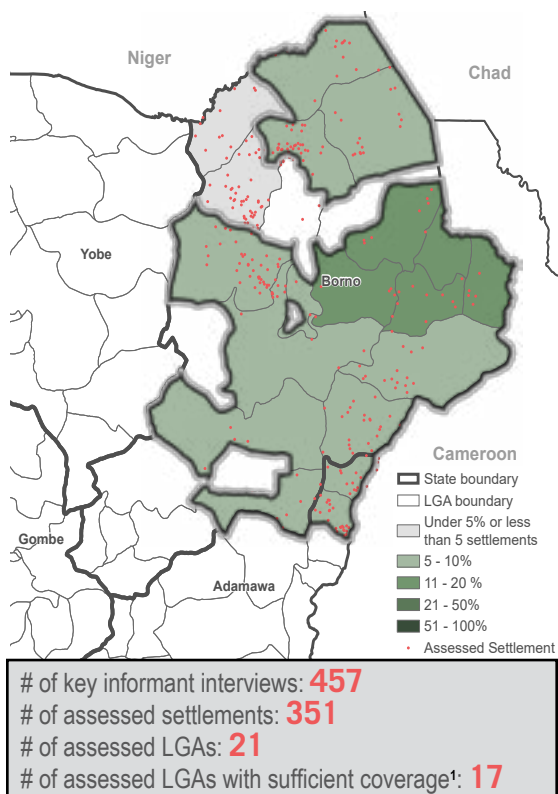
## Assessment of Hard-to-Reach Areas in Northeast Nigeria

February 2021

### Introduction

The continuation of conflict in Northeast Nigeria has created a complex humanitarian crisis, rendering sections of Borno and Adamawa states as hard to reach. To address information gaps facing the humanitarian response and inform humanitarian actors on the demographics of households in hard-to-reach areas of Northeast Nigeria, as well as to identify their needs, access to services and movement intentions, REACH has been conducting monthly assessment of hard-to-reach areas in Northeast Nigeria since November 2018.

#### Proportion of settlements assessed, February 2021



### Methodology

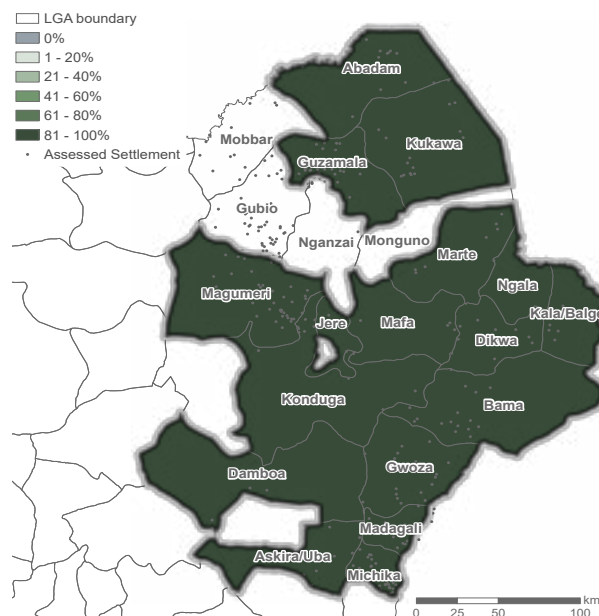
Using the Area of Knowledge (AoK) methodology, REACH remotely monitors the situation in hard-to-reach areas through monthly multi-sector interviews in accessible Local Government Area (LGA) capitals with key informants (KIs) who are either (1) newly arrived internally displaced persons (IDPs) who have left a hard-to-reach settlement in the last month or (2) KIs who have had contact with someone living or having been in a hard-to-reach settlement in the last month (traders, migrants, family members, etc.).

If not stated otherwise, the recall period for each question is set to one month prior to the last information the KI has had from the hard-to-reach area. Selected KIs are purposively sampled and are interviewed on settlement-wide circumstances in hard-to-reach areas, rather than their individual experiences. Responses from KIs reporting on the same settlement are then aggregated to the settlement level. The most common response provided by the greatest number of KIs is reported for each settlement. When no most common response could be identified, the response is considered as 'no consensus'. While included in the calculations, the percentage of settlements for which no consensus was reached is not displayed in the results below.

Results presented in this factsheet, unless otherwise specified, represent the proportion of settlements assessed within an LGA. Findings are only reported on LGAs where at least 5% of populated settlements and at least 5 settlements in the respective LGA have been assessed. **The findings presented are indicative of broader trends in assessed settlements in February 2021, and are not statistically generalisable<sup>2</sup>.** Due to precautions related to the COVID-19 outbreak, data was collected remotely through phone based interviews with assistance from local stakeholders. Data collection took place from February 1<sup>st</sup> to February 26<sup>th</sup>.

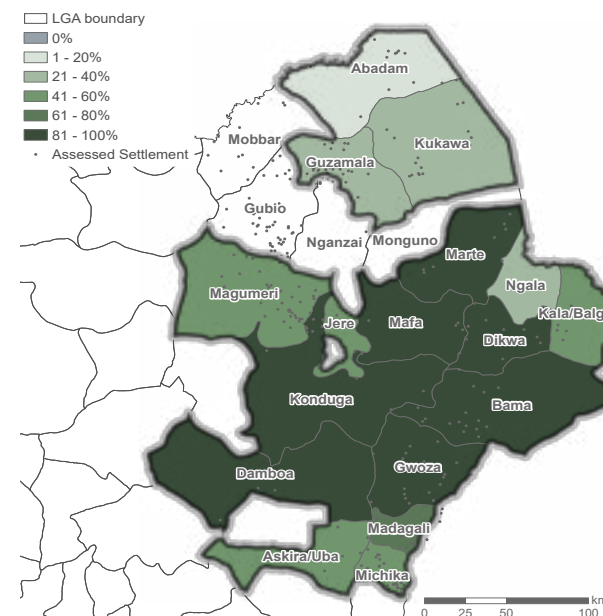
#### Original population

Proportion of assessed settlements where presence of non-displaced populations was reported:



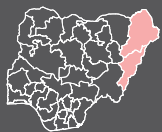
#### IDP presence

Proportion of assessed settlements where presence of internally displaced persons (IDPs) was reported:



<sup>1</sup> The most recent dataset on grid3.gov.ng/datasets has been used as the reference for settlement names and locations, and adjusted to account for deserted villages based on information shared by OCHA

<sup>2</sup> Due to changes in migration patterns, the specific settlements assessed within each LGA vary each month. Changes in results reported in this factsheet, compared to previous factsheets, may therefore be due to variations in the assessed settlements instead of changes over time.



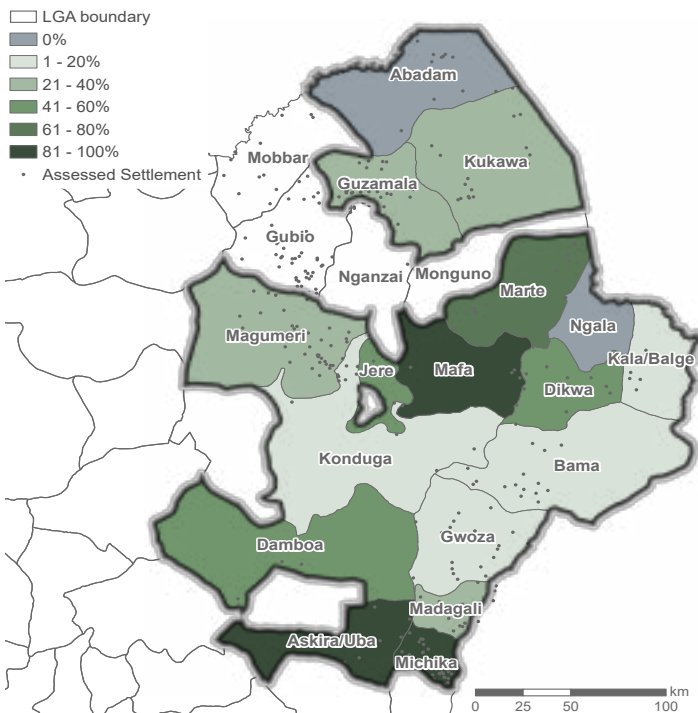
# Adamawa and Borno - Population movement and communication

## Assessment of Hard-to-Reach Areas in Northeast Nigeria

February 2021

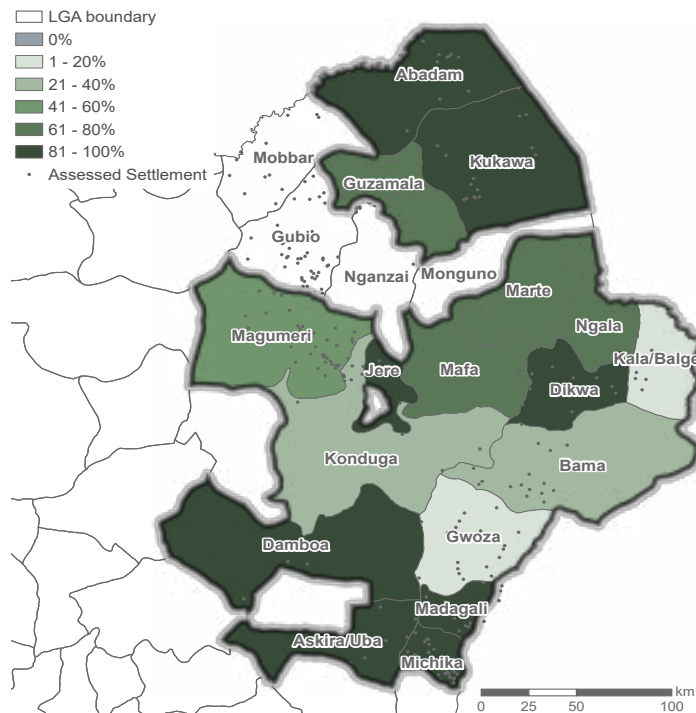
### Returnees presence

Proportion of assessed settlements where presence of returnees was reported:

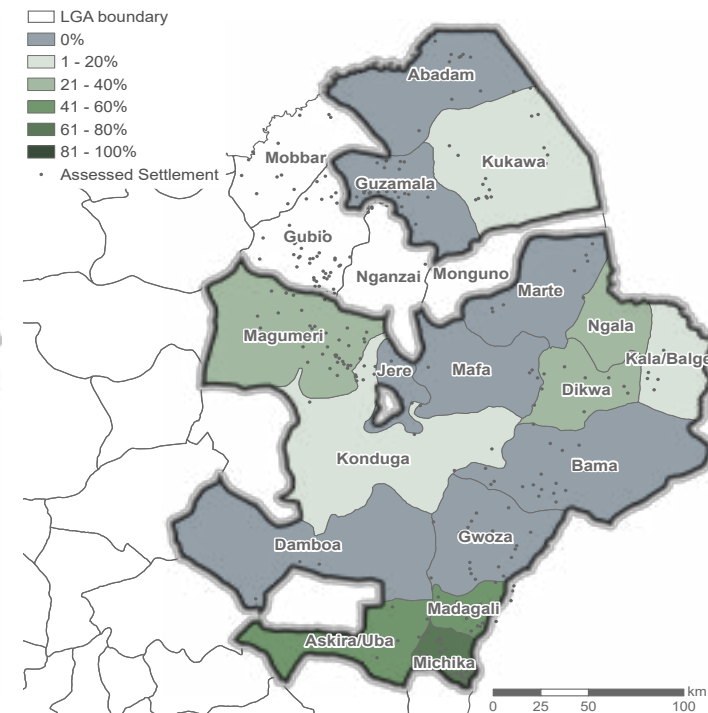


### Means of communication

Proportion of assessed settlements where a functioning radio signal was reported:

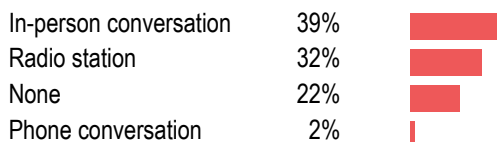


Proportion of assessed settlements where a functioning mobile network was reported:



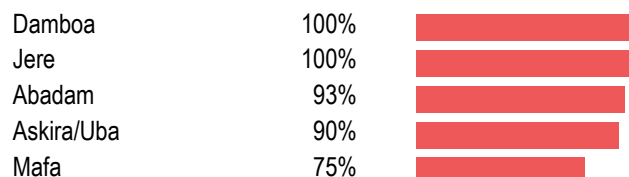
### Source of information

Most commonly reported main sources of information, by % of assessed settlements:

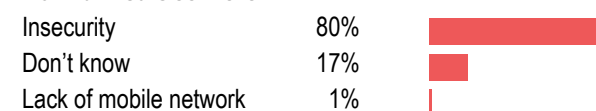


### Access to information

Top five LGAs with the highest proportion of assessed settlements where people reportedly experienced difficulties accessing information on the availability of humanitarian assistance:



In assessed settlements where people were reportedly experiencing difficulties accessing information on humanitarian assistance (74% of settlements), the most commonly reported main difficulties were:



**USAID**  
FROM THE AMERICAN PEOPLE



Funded by  
European Union  
Humanitarian Aid

For more information on this factsheet please contact:

REACH  
reach.nigeria@reach-initiative.org

**REACH** Informing  
more effective  
humanitarian action