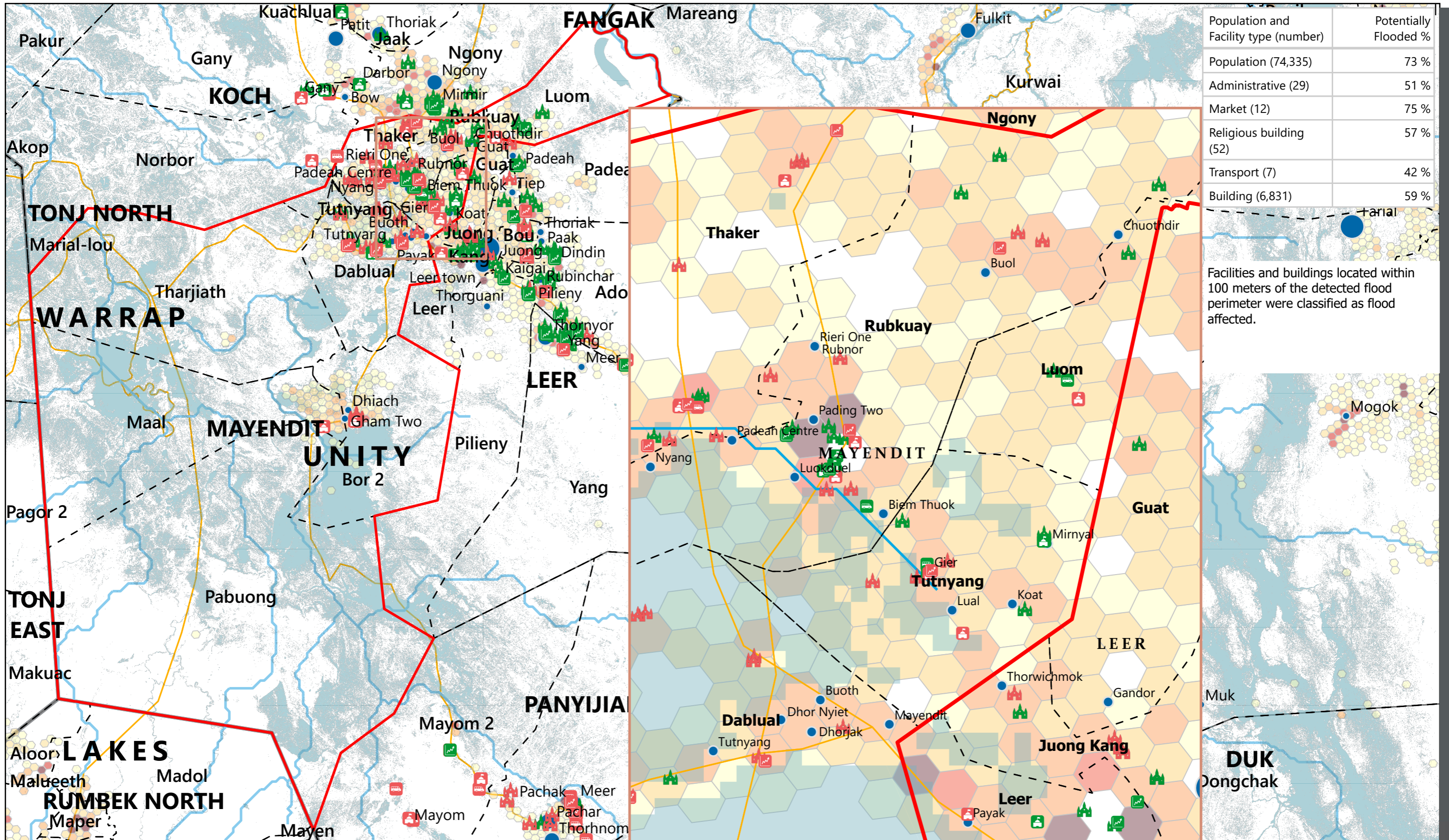


SOUTH SUDAN - Mayendit County

Flood Impact Map: Administrative & Other Facilities (October 2025)

For Humanitarian Purposes Only
Production Date: 22 October 2025



Population and Facility type (number)	Potentially Flooded %
Population (74,335)	73 %
Administrative (29)	51 %
Market (12)	75 %
Religious building (52)	57 %
Transport (7)	42 %
Building (6,831)	59 %

Facilities and buildings located within 100 meters of the detected flood perimeter were classified as flood affected.



Population (Kontur, 2023)

1 - 100
101 - 250
251 - 500
501 - 750
> 750

Settlements (Population)

< 5,000
5,001 - 10,000

> 10,000	Unaffected Transport Facility
Unaffected Market	Potentially Affected Transport Facility
Potentially Affected Market	Unaffected Religious Centre
Unaffected Administrative Office	Potentially Affected Religious Centre
Potentially Affected Administrative Office	

Roads	Payam
River	County
Focus County	State

Legend for symbols and lines: Roads, River, Payam, Focus County, County, State.

Scale: 0, 10, 20 Km

Compass rose showing North (N), South (S), East (E), West (W).

Data sources: Source: REACH, OCHA, UNMISS, IOM_DTM, UNOSAT, FEWSNET, WHO, IOM, DTM, Global Google-Microsoft Open Buildings Dataset (2023)
Coordinate System: Name: GCS WGS 1984
File: REACH_SSD_Map_Unity_Mayendit_Flood_Impact_Administrative_22_Oct_2025
Contact: reach.mapping@impact-initiatives.org

Note: Data, designations and boundaries contained on this map are not warranted to be error-free and do not imply acceptance by REACH partners, associates or donors mentioned on this map.

