



# UN House Snapshot

Juba County, Central Equatoria State, South Sudan

South Sudan Displacement Crisis

July 2015

## Summary

UN House is an UNMISS peacekeeping base in Juba. The base hosts 3 Protection of Civilians (PoC) Sites, which house a total of 28,528 displaced persons. The overwhelming majority of Internally Displaced Persons (IDPs) are from the Nuer ethnic group with a small number of Foreign Nationals also residing in the base.

PoC1 was the first site where IDPs fled for safety during the initial days of the crisis in December 2013. The site set up was spontaneous, as people rushed in. As an unplanned site, PoC1 has faced many challenges related to insufficient space, overcrowding and poor drainage. There is limited available space for recreation or community facilities.

PoC2 is the smallest site inside UN House and its residents are all foreign nationals from Somalia, Ethiopia, Eritrea, and Darfur. The majority of the foreign nationals are currently undergoing Refugee Status Determination (RSD), led by UNHCR.

PoC3 is located outside the UN base itself, on land annexed in 2014. From its inception, PoC3 was designed to host IDPs who were relocated from the PoC site in the UNMISS Tongping base across Juba. It is a planned site, structured into blocks and zones with wide access roads dividing up the camp which helps with service provision. A specific zone is designated for NGO and community activities.

## Demographic

### PoC 1 = 7,430 individuals

51.1% male / 48.9% female\*

0.4% | Over 60 | 0.4%

22.6% | 18 - 60 | 21%

5.1% | 12 - 17 | 4.3%

8.5% | 6 - 11 | 8.5%

14.5% | 0 - 5 | 14.7%



\*Population figure as of 13 July 2015

### PoC 2 = 578 individuals

73.7% male / 26.3% female\*

0.3% | Over 60 | 0%

66.5% | 18 - 60 | 21.5%

0.5% | 12 - 17 | 0.3%

1% | 6 - 11 | 0.5%

5.4% | 0 - 5 | 4%



### PoC 3 = 20,518 individuals

52.5% male / 47.5% female\*

0.5% | Over 60 | 0.5%

27.3% | 18 - 60 | 22.2%

5% | 12 - 17 | 4.7%

7.3% | 6 - 11 | 8.2%

12.4% | 0 - 5 | 11.9%



## Statistics

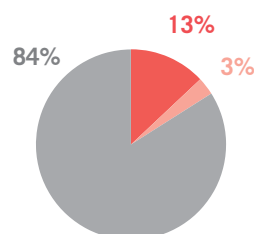
### Site Area (m<sup>2</sup>)

PoC 1 94,987 m<sup>2</sup>

PoC 2 20,091 m<sup>2</sup>

PoC 3 629,782 m<sup>2</sup>

UN House 744,860 m<sup>2</sup>



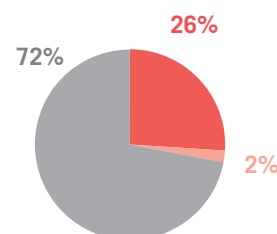
### Population

PoC 1 7,430

PoC 2 578

PoC 3 20,518

UN House 28,526



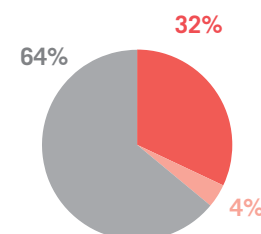
### Number of Shelters

PoC 1 2,636

PoC 2 344

PoC 3 5,221

UN House 8,201



## Sectoral Highlights

		Target**	PoC 1	PoC 2	PoC 3
CCCM	Average open area per person	min. 30m <sup>2</sup>	12.7m <sup>2</sup>	34.7m <sup>2</sup>	30.7m <sup>2</sup>
Water Sanitation	Litres of water available per person per day	min. 15L	16L	17L	17L
	# of persons per latrine	max. 20	67	34	27
	# of persons per shower	max. 20	119	58	108
Shelter	% households provided with a shelter (official structures) on arrival	100%	n/a	100%	100%
	Average covered space per person**	4.2m <sup>2</sup>	5.3m <sup>2</sup>	9.5m <sup>2</sup>	5.3m <sup>2</sup>
	Average number of individuals per tent	max 5	2.8	1.6	3.9
Health	Health services are available on-site or within walking distance	Yes	Yes	Yes	Yes

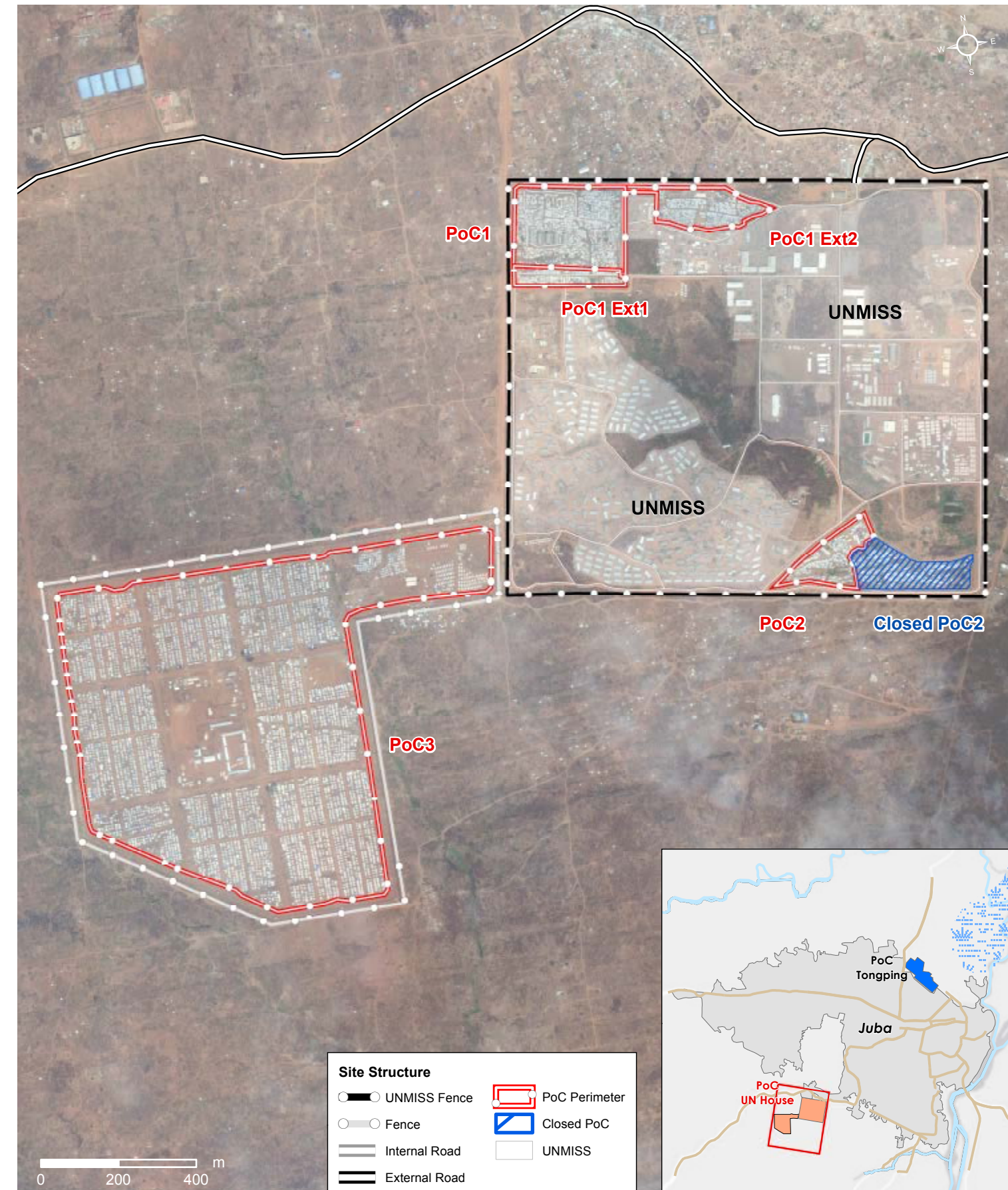
\*\*Targets are based on minimum standards agreed with the CCCM Cluster. Target reached, Target more than 50% reached, Target less than 50% or not at all reached. No data

## Location Map



## UN House Site Map

Lat: 4.815111 DD Long: 31.54108 DD



CCCM CLUSTER  
SUPPORTING DISPLACED COMMUNITIES

For more information on this profile please contact:  
REACH Initiative: south.sudan@reach-initiative.org  
CCCM Cluster: cccmsouthsudan.coord@gmail.com

REACH  
An initiative of  
IMPACT Initiatives  
ACTED and UNOSAT