

NORTHWEST SYRIA MARKET MONITORING EXERCISE

Snapshot: 8-16 June 2020

INTRODUCTION

To inform humanitarian cash programming, REACH, in partnership with the Cash Working Group (CWG), conducts monthly Market Monitoring Exercises in northern Syria to assess the availability and prices of 36 basic commodities that are typically sold in markets and consumed by average Syrian households, including food and non-food items, water, fuel, and cellphone data.

Of these, 18 items comprise the Survival Minimum Expenditure Basket (SMEB; see below), which represents the minimum, culturally adjusted items required to support a 6-person household for a month.

Data collection took place between 8-16 June 2020 and was conducted by Solidarites International, GOAL, Violet, REACH, SARD, CARE-Shafak, and People In Need.

The accompanying [data from the month of June](#) is disseminated monthly and is distributed through partners across the humanitarian community.

SURVIVAL MINIMUM EXPENDITURE BASKET (SMEB) CONTENTS

	Item	Quantity
Food Items	Bread	37 kg
	Bulgur	15 kg
	Chicken	6 kg
	Eggs	6 kg
	Fresh vegetables	12 kg
	Ghee/vegetable oil	7 kg/L
	Red lentils	15 kg
	Rice	19 kg
	Salt	1 kg
	Sugar	5 kg
	Tomato paste	6 kg
	Hygiene items	Bathing soap
Laundry/dish soap		3 kg
Sanitary pads		4 packs of 10
Toothpaste		200 g
Fuel	Cooking fuel*	25 L
Water	Water trucking	4500 L
Telecom	Smartphone data	1 GB
Other	Float (other costs)**	7.5% total value

* Kerosene in northern Syria

** Float only applied to observations where prices of all SMEB contents could be collected

KEY DEVELOPMENTS

Coverage and data collection dates

This month, REACH and partners covered 33 sub-districts and 2,178 individual shops in northwest Syria for the Market Monitoring Exercise. In light of the current rapid depreciation of the Syrian Pound (SYP) and resulting market disruption, prices in the Market Monitoring dataset and output should be seen as representative only of the markets and dates where and when information was collected (8-16 June).

Highest northwest SMEB SYP cost recorded; SMEB USD remained stable

In June 2020, the value of the regional SMEB reached 224,353 SYP / 86 United States Dollars (USD), increasing by 68% in SYP since May and by 112% since January and setting a new highest recorded price in the Market Monitoring Exercise in NWS. While the SMEB continued to sharply rise in SYP, in USD the SMEB value remained stable at 86 USD between May and June due to the further depreciation of the SYP against the USD (see next paragraph).

Sharp depreciation of the SYP against the USD

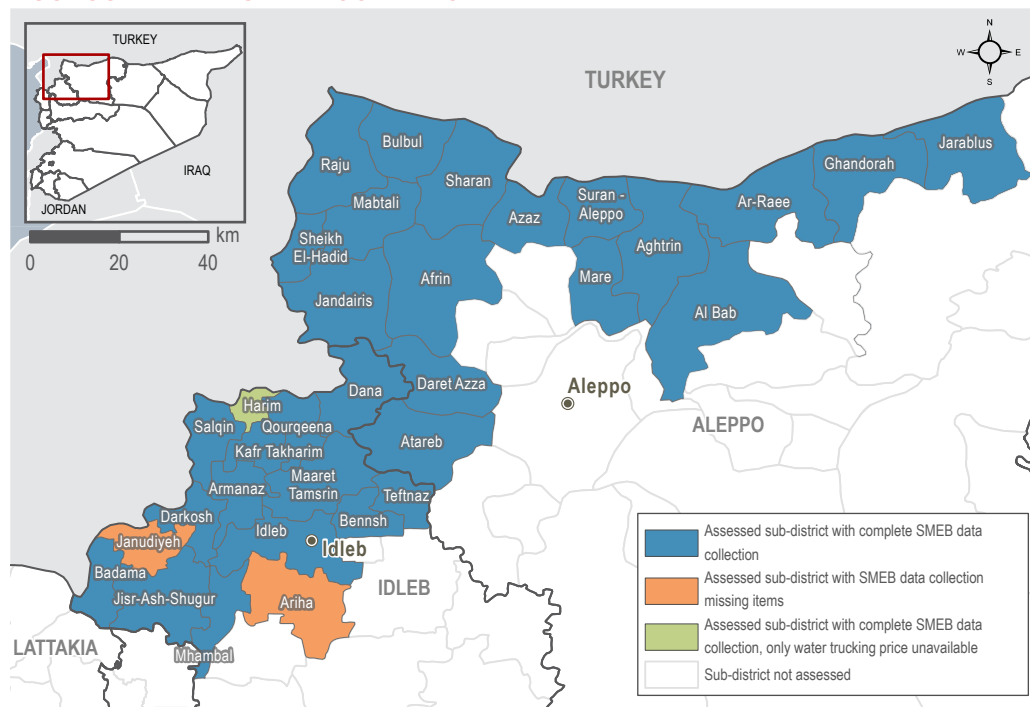
During data collection throughout June, the informal SYP/USD exchange rate continued to sharply increase across the region. The total median regional informal exchange rate was recorded at 2,625 SYP/USD, a 67% increase since last month. The highest exchange rate was recorded at 3,050 SYP to 1 USD in Atareb community in Aleppo governorate. The continued financial crisis in Lebanon, international economic sanctions, declining remittances, and internal disputes between actors in Syria are [reported as the main causes](#) for the sharp depreciation of the SYP informal exchange rate.

Fuel prices increased; manually refined petrol and kerosene widely unavailable

This month, the median price of transport fuels increased by 64% at the regional level, reaching 1,233 SYP per litre. The price of manually refined kerosene (used for cooking) also increased by 72% since May. The price of high quality

petrol and diesel increased by 78% and 61%, respectively, over the past month. Manually refined petrol and diesel also considerably increased since May, by 76% and 63%, respectively. Moreover, surveyed vendors selling fuel and gas reported a scarcity of manually refined kerosene and petrol, with 60% reporting that manually refined kerosene was unavailable in their market, and 76% reporting the same for manually refined petrol. Field teams reported that this scarcity was likely due to the challenges of importing manually refined fuels into NWS from NES where they are largely produced. This scarcity of manually refined products, along with the cost of importing high quality fuels from Turkey and the depreciation of the SYP, were likely causes of the fuel prices increase during data collection in June.

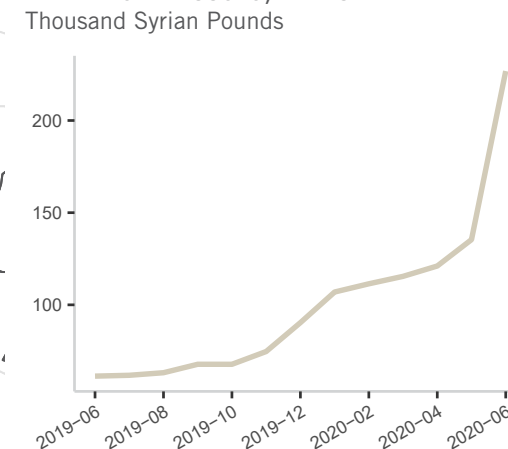
ASSESSED AREAS AND COVERAGE



MEDIAN SMEB COST IN SYP (USD), BY REGION

224,385 SYP (86 USD) NORTHWEST SYRIA - IDLEB, WESTERN & NORTHERN ALEPPO GOVERNORATES

MEDIAN SMEB COSTS, BY MONTH



KEY DEVELOPMENTS

224,385 SYP (86 USD) NORTHWEST SYRIA - IDLEB, WESTERN & NORTHERN ALEPPO GOVERNORATES

Food items prices sharply increased

This month, the regional SMEB food component reached 156,550 SYP, a sharp 67% increase since May and 122% increase since January. The SMEB vegetable component also increased by 34% since May, despite the ongoing local vegetable production season in NWS. As with the regional SMEB, in USD, the SMEB Food value did not change. REACH's recent [NWS Rapid Market Functionality assessment](#) found that 36% of surveyed vendors reported an increase in demand in the two weeks prior to data collection. Moreover, among vendors who reported supply challenges during the Market Monitoring Exercise, 99% reported price inflation as their main supply challenge (see page 10 for Market Functionality findings). Increasing demand combined with supply challenges and the collapsing currency are likely contributing factors to the sharp increase in food prices. Moreover, field teams reported that vendors raised their prices to avoid potential losses due to the ongoing fluctuation of the informal exchange rate. Bulk food items in particular have witnessed a significant increase since May. For example, the price of rice increased by 59%, split lentils by 67%, and sugar by 83% since May. As bulk food items are largely imported into NWS, these sharp price increases may be due to the increased cost of transport fuels and the depreciation of the SYP. Prices of flour and bread have also significantly increased. Flour increased by 69% since May,

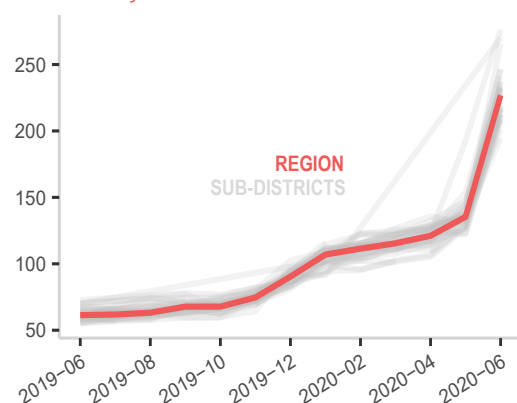
reaching a median of 900 SYP and a bag of 8 pieces of bread increased by 97%, reaching a median of 700 SYP. Field teams reported that NWS communities largely rely on imported flour as locally produced flour is widely unavailable, which has led to a significant price increase. Finally, other SMEB basic food items, such as eggs (63% increase), oil (68% increase), and salt (100% increase), have seen their prices soar since May.

Hygiene items prices increased

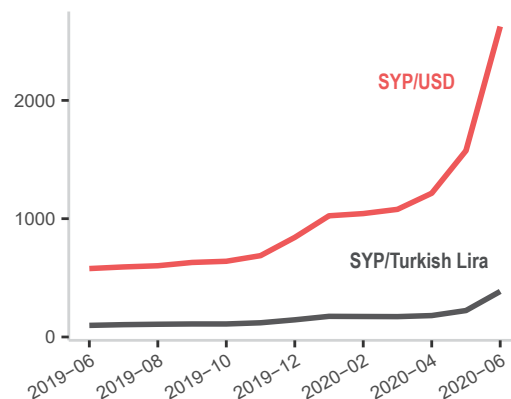
This month, the SMEB hygiene component increased by 44% at the regional level, reaching a median of 12,075 SYP. More specifically, prices of toothpaste increased by 61% since May and diapers by 67%. The price of soap, used for handwashing and considered a preventive measure against COVID-19 by the [World Health Organisation](#), increased by 60% since May. As with bulk foods, hygiene items are largely imported into NWS, and thus the increase in transport fuel prices and the depreciation of the SYP likely contribute to the sharp increase in prices. Moreover, the latest [NWS Rapid Market Functionality assessment](#) found that 28% of hygiene items vendors and 24% of pharmacists reported an increase in demand during late May to early June. Field teams confirmed that demand for hygiene products increased due to COVID-19. This increased demand may also explain price increases. See page 11 for COVID-19-related findings.

MEDIAN SMEB COSTS, BY MONTH

Thousand Syrian Pounds



EXCHANGE RATES, BY MONTH & CURRENCY



MEDIAN SMEB COSTS & CHANGES*

Syrian Pounds

Sub-district	SMEB	One month change	Six month change
Northwest Syria	224,353	66%	112%
Afrin	211,797	73%	129%
Aghtrin	213,979	76%	117%
Al Bab	236,879	82%	131%
Ariha	NA	NA	NA
Armanaz	230,633	64%	105%
Ar-Ra'ee	230,755	80%	130%
Atareb	260,504	43%	134%
A'zaz	246,388	69%	125%
Badama	229,382	65%	108%
Bennsh	265,750	99%	167%
Bulbul	208,911	65%	90%
Dana	221,342	64%	102%
Daret Azza	221,891	63%	107%
Darkosh	220,517	67%	95%
Ghandorah	226,815	76%	141%
Harim**	195,892	52%	77%

Sub-district	SMEB	One month change	Six month change
Idleb	229,683	71%	118%
Jandairis	197,518	50%	90%
Janudiyeh	NA	NA	NA
Jarablus	244,229	68%	139%
Jisr-Ash-Shugur	209,491	56%	110%
Kafr Takharim	246,510	65%	121%
Maaret Tamsrin	210,771	56%	99%
Ma'bтали	207,572	68%	103%
Mare'	209,496	54%	NA
Mhambal	232,022	61%	127%
Qourqeena	216,338	59%	102%
Raju	233,440	66%	NA
Salqin	235,059	60%	116%
Sharan	212,316	59%	123%
Sheikh El-Hadid	212,302	58%	86%
Suran	205,170	50%	90%
Teftnaz	270,171	NA	193%

* For price and change calculations, only the communities within a sub-district with consistent coverage across months are included.

** SMEB calculated without water trucking component.

Note: Lack of data for a SMEB item does not necessarily imply a shortage.

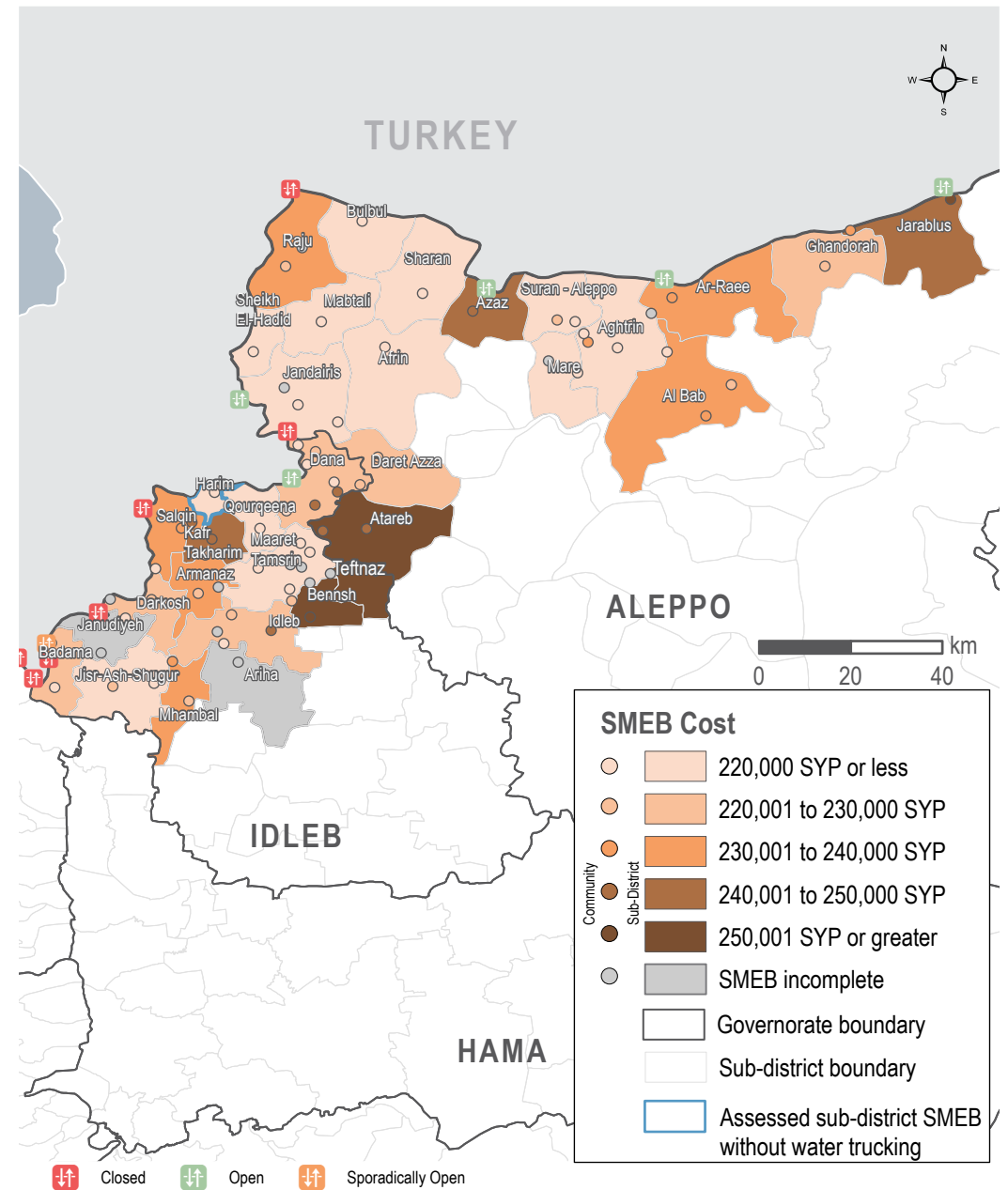
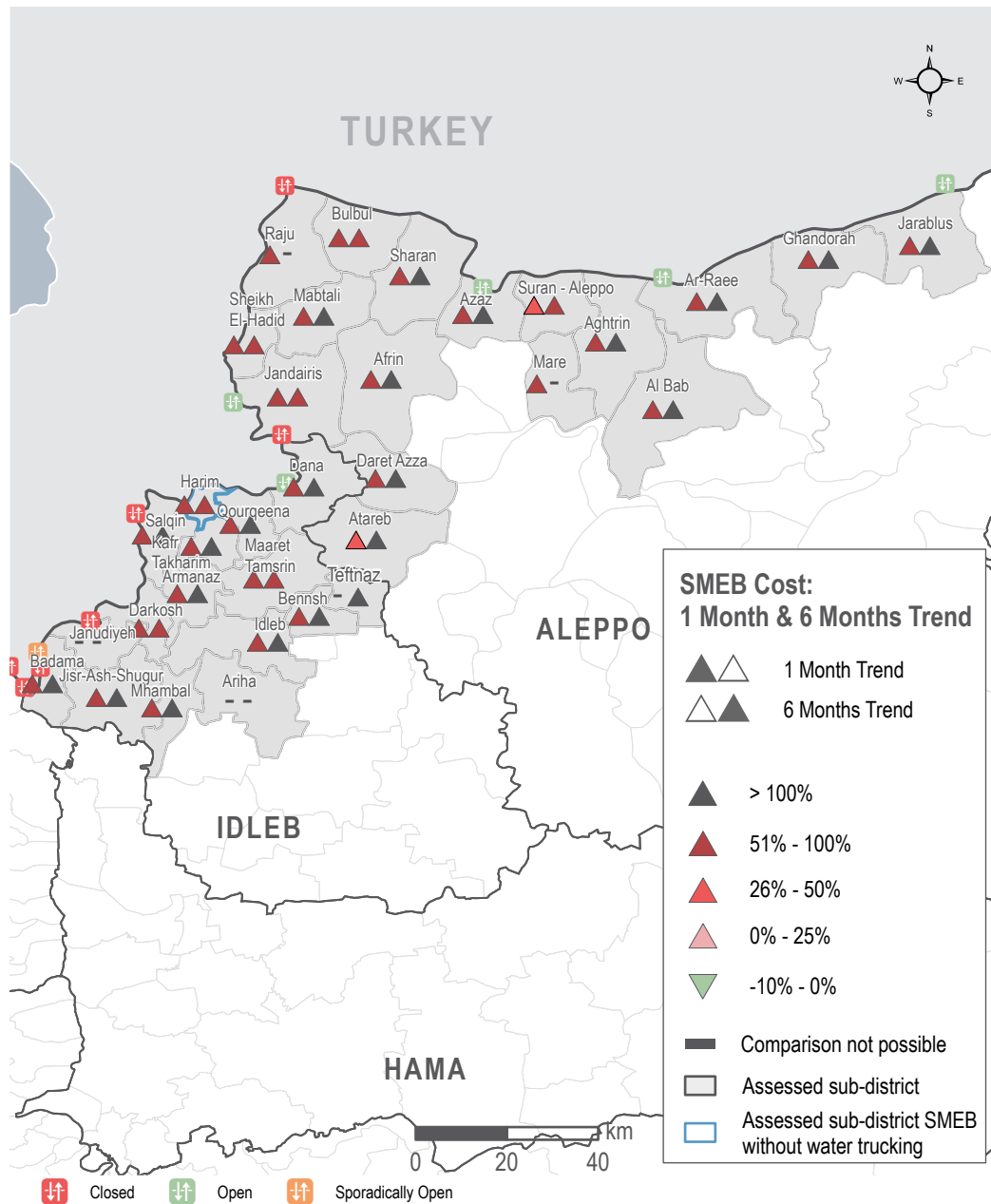
SUB-DISTRICTS WITH INCOMPLETE SMEB IN JUNE

- Ariha** Bread, Manually refined kerosene
- Janudiyeh** Manually refined kerosene, Toothpaste

Note: Lack of data for a SMEB item does not necessarily imply a shortage.

SMEB COST: ONE MONTH & SIX MONTHS TREND

SMEB COST RANGES (SYP), BY SUB-DISTRICTS & COMMUNITIES



NORTHWEST SYRIA - SMEB FOOD ITEMS

Idleb, Western & Northern Aleppo governorates

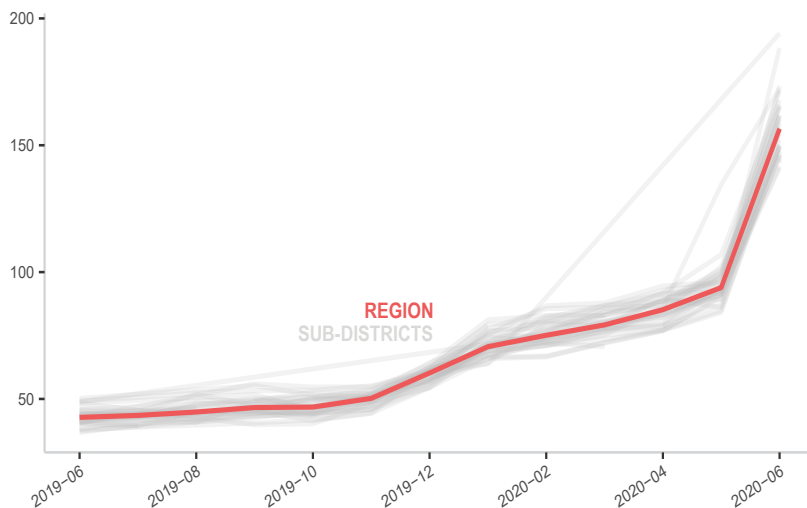
MEDIAN SMEB COST: FOOD ITEMS

See Page 1, Syrian Pounds

Sub-district	SMEB Food	One month change	Six month change	Sub-district	SMEB Food	One month change	Six month change
Northwest Syria	156,550	67%	122%	Idleb	166,875	78%	134%
Afrin	150,228	75%	135%	Jandairis	144,450	58%	92%
Aghtrin	144,338	68%	118%	Janudiyeh	166,000	67%	146%
Al Bab	161,625	76%	130%	Jarablus	164,502	67%	144%
Ariha	NA	NA	NA	Jisr-Ash-Shugur	151,125	68%	135%
Armanaz	159,718	66%	118%	Kafr Takharim	167,713	57%	111%
Ar-Ra'ee	156,725	80%	122%	Maaret Tamsrin	143,741	56%	116%
Atareb	165,275	30%	105%	Ma'bтали	152,225	71%	116%
A'zaz	164,938	69%	127%	Mare'	152,338	52%	100%
Badama	154,653	62%	124%	Mhambal	169,289	61%	141%
Bennsh	188,345	105%	169%	Qourqeena	154,500	64%	118%
Bulbul	140,723	66%	104%	Raju	171,975	72%	NA
Dana	150,144	61%	114%	Salqin	158,550	56%	104%
Daret Azza	158,800	65%	112%	Sharan	141,018	55%	114%
Darkosh	157,366	68%	116%	Sheikh El-Hadid	156,375	63%	102%
Ghandorah	149,850	78%	127%	Suran	140,481	50%	96%
Harim	146,050	63%	96%	Teftnaz	194,105	NA	200%

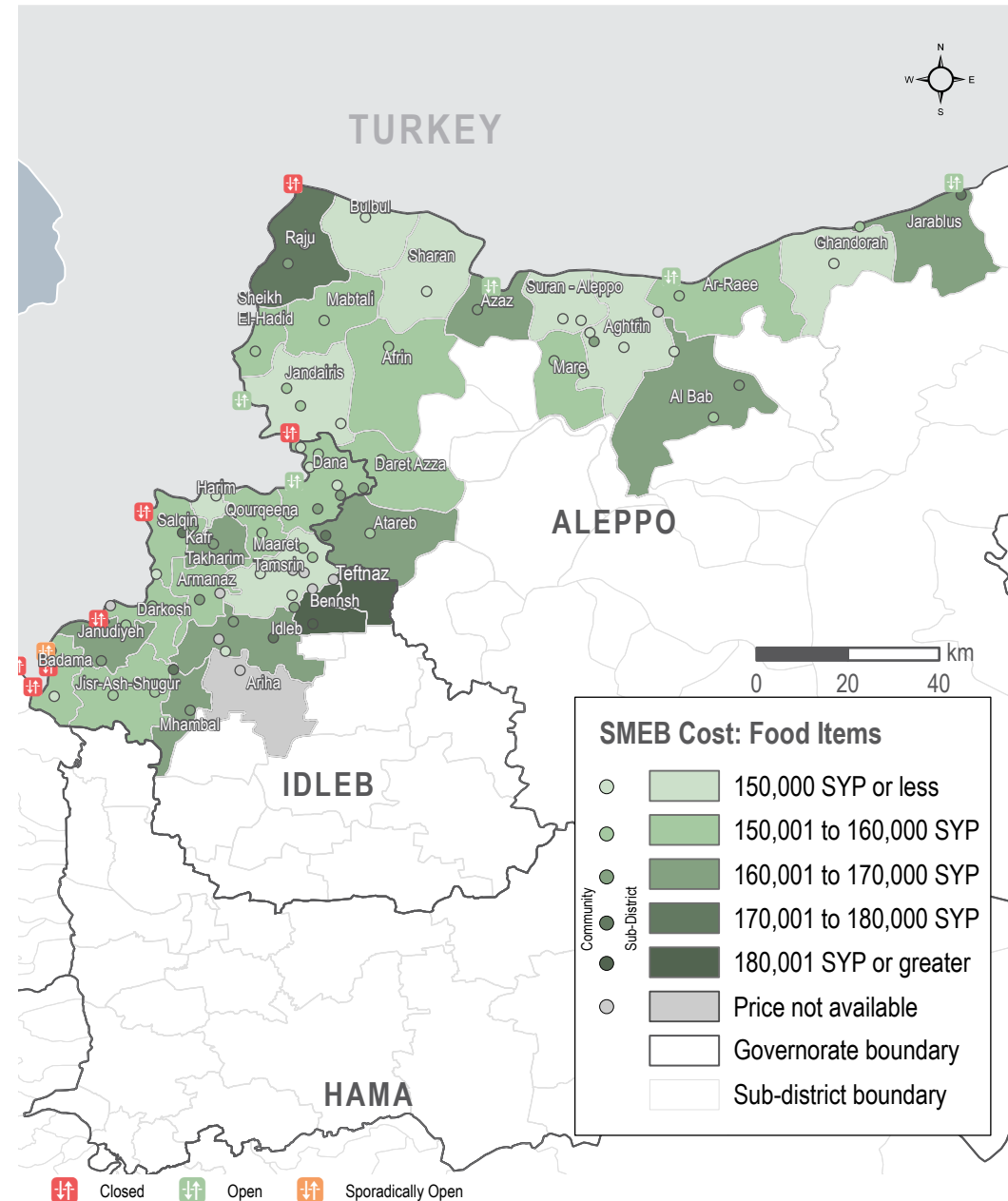
MEDIAN SMEB COST: FOOD ITEMS, BY MONTH

Thousand Syrian Pounds



SMEB FOOD ITEMS' COST

Sub-districts & Communities, Syrian Pounds



NORTHWEST SYRIA - SMEB COOKING FUEL

Idleb, Western & Northern Aleppo governorates

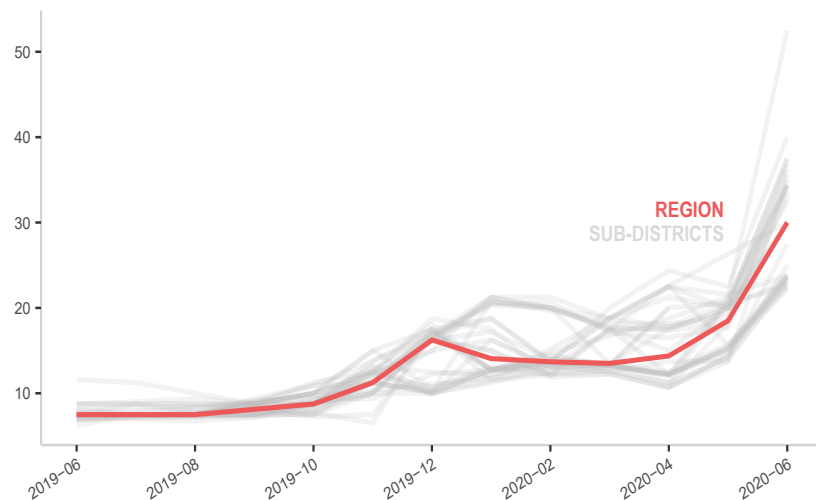
MEDIAN SMEB COOKING FUEL PRICE

Kerosene 25L, Syrian Pounds

Sub-district	SMEB Cooking Fuel	One month change	Six month change	Sub-district	SMEB Cooking Fuel	One month change	Six month change
Northwest Syria	30,000	65%	113%	Idleb	23,125	50%	81%
Afrin	23,500	71%	109%	Jandairis	22,500	9%	76%
Aghtrin	32,500	131%	117%	Janudiyeh	23,125	52%	11%
Al Bab	35,000	155%	175%	Jarablus	36,875	84%	127%
Ariha	22,750	44%	32%	Jisr-Ash-Shugur	23,500	9%	25%
Armanaz	34,375	62%	67%	Kafr Takharim	37,500	127%	209%
Ar-Ra'ee	36,250	100%	215%	Maaret Tamsrin	32,500	68%	53%
Atareb	52,500	147%	312%	Ma'bтали	25,000	77%	54%
A'zaz	35,625	78%	104%	Mare'	22,188	58%	74%
Badama	34,375	83%	64%	Mhambal	24,000	55%	88%
Bennsh	33,750	69%	177%	Qourqeena	30,000	50%	41%
Bulbul	32,500	83%	59%	Raju	23,688	57%	NA
Dana	34,375	89%	66%	Salqin	40,000	83%	214%
Daret Azza	23,750	61%	86%	Sharan	34,375	62%	170%
Darkosh	23,750	56%	27%	Sheikh El-Hadid	22,250	46%	70%
Ghandorah	37,500	82%	194%	Suran	30,000	50%	66%
Harim	23,250	16%	9%	Teftnaz	30,000	NA	161%

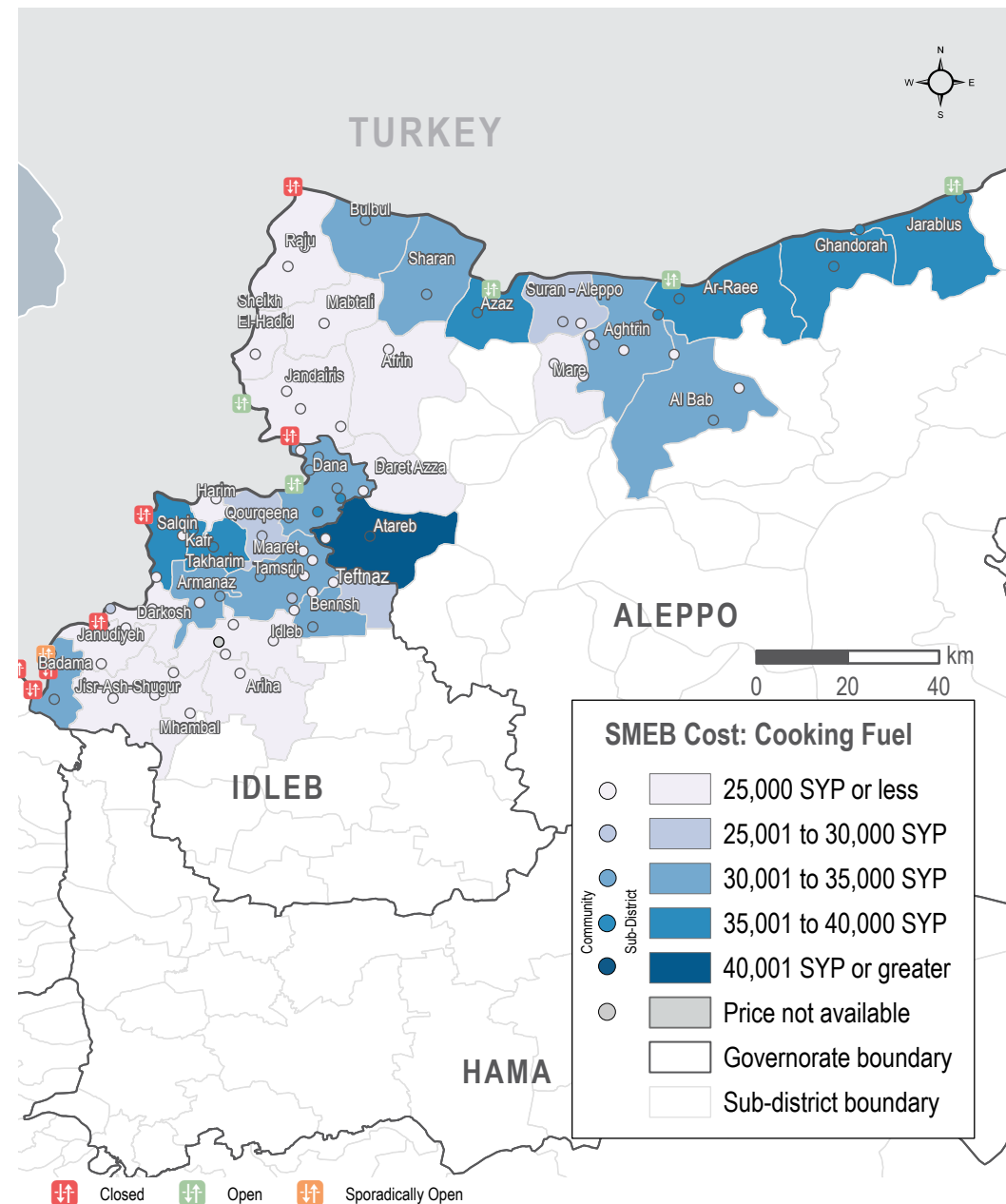
MEDIAN SMEB COOKING FUEL COSTS, BY MONTH

Thousand Syrian Pounds



SMEB COOKING FUEL COST

Sub-districts & Communities, Syrian Pounds



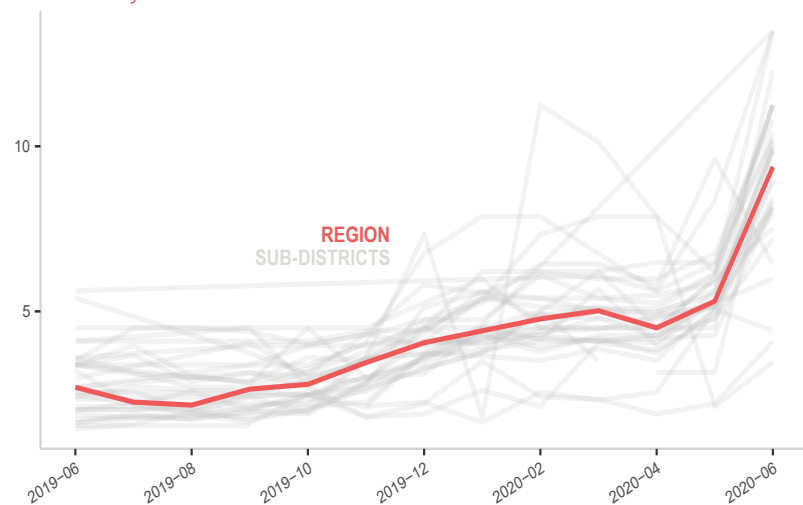
MEDIAN SMEB WATER TRUCKING PRICE

4,500L, Syrian Pounds

Sub-district	SMEB Water Truck	One month change	Six month change	Sub-district	SMEB Water Truck	One month change	Six month change
Northwest Syria	8,955	69%	99%	Idleb	13,500	61%	71%
Afrin	10,800	60%	94%	Jandairis	4,163	85%	68%
Aghtrin	11,250	100%	108%	Janudiyeh	5,985	14%	33%
Al Bab	9,855	52%	59%	Jarablus	11,250	84%	108%
Ariha	6,435	-33%	22%	Jisr-Ash-Shugur	9,000	75%	120%
Armanaz	7,200	45%	78%	Kafr Takharim	9,849	85%	143%
Ar-Ra'ee	9,990	82%	85%	Maaret Tamsrin	8,325	70%	92%
Atareb	8,287	47%	78%	Ma'btali	3,465	64%	93%
A'zaz	13,478	119%	184%	Mare'	8,471	135%	225%
Badama	12,195	117%	154%	Mhambal	10,620	81%	101%
Bennsh	9,990	217%	166%	Qourqeena	4,412	5%	170%
Bulbul	8,100	38%	45%	Raju	10,024	54%	NA
Dana	8,100	53%	98%	Salqin	8,460	65%	129%
Daret Azza	8,910	72%	139%	Sharan	8,190	92%	114%
Darkosh	12,285	173%	118%	Sheikh El-Hadid	7,515	26%	26%
Ghandorah	10,170	92%	138%	Suran	7,020	59%	72%
Harim	NA	NA	NA	Teftnaz	13,500	NA	200%

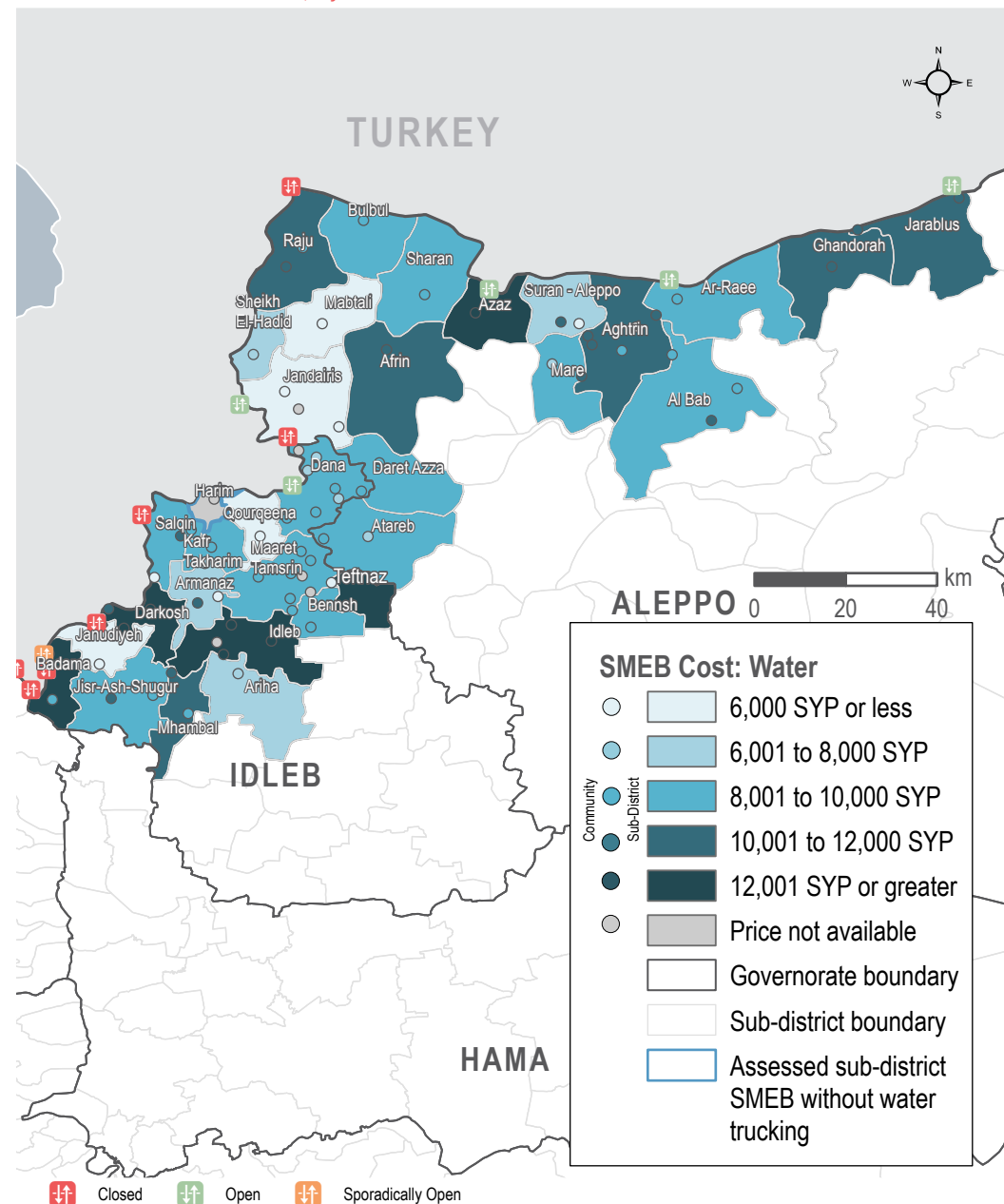
MEDIAN SMEB WATER TRUCKING COSTS, BY MONTH

Thousand Syrian Pounds



SMEB WATER TRUCKING COST

Sub-districts & Communities, Syrian Pounds



NORTHWEST SYRIA - SMEB CELLPHONE DATA

Idleb, Western & Northern Aleppo governorates

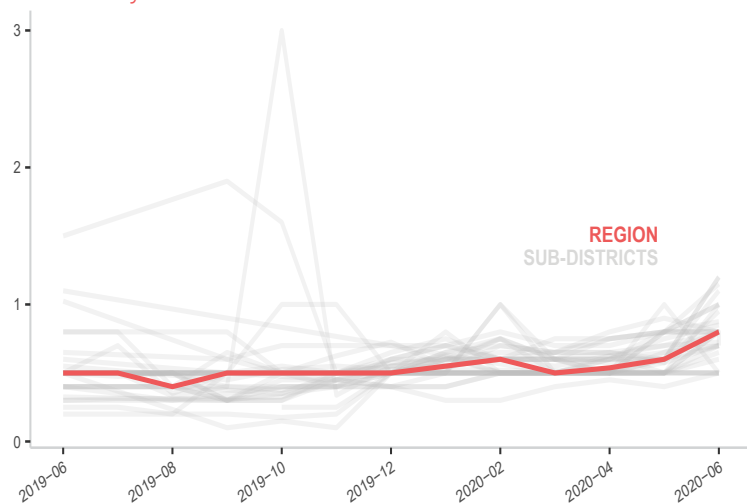
MEDIAN SMEB CELLPHONE DATA PRICE

1GB data, Syrian Pounds

Sub-district	SMEB Data (1GB)	One month change	Six month change	Sub-district	SMEB Data (1GB)	One month change	Six month change
Northwest Syria	800	33%	45%	Idleb	500	0%	0%
Afrin	1,200	100%	100%	Jandairis	600	20%	-4%
Aghtrin	850	10%	70%	Janudiyeh	800	60%	60%
Al Bab	850	13%	42%	Jarablus	1,150	44%	130%
Ariha	800	33%	14%	Jisr-Ash-Shugur	825	0%	57%
Armanaz	650	30%	30%	Kafr Takharim	950	65%	55%
Ar-Ra'ee	500	0%	-38%	Maaret Tamsrin	700	17%	17%
Atareb	500	-38%	0%	Ma'btali	1,000	25%	43%
A'zaz	875	9%	59%	Mare'	1,100	83%	69%
Badama	725	32%	26%	Mhambal	500	11%	67%
Bennsh	500	0%	25%	Qourqeena	725	4%	32%
Bulbul	775	11%	3%	Raju	800	23%	NA
Dana	700	8%	0%	Salqin	800	33%	33%
Daret Azza	1,200	100%	140%	Sharan	800	0%	52%
Darkosh	700	40%	40%	Sheikh El-Hadid	1,000	100%	100%
Ghandorah	1,000	25%	100%	Suran	925	68%	32%
Harim	800	-11%	23%	Teftnaz	500	NA	0%

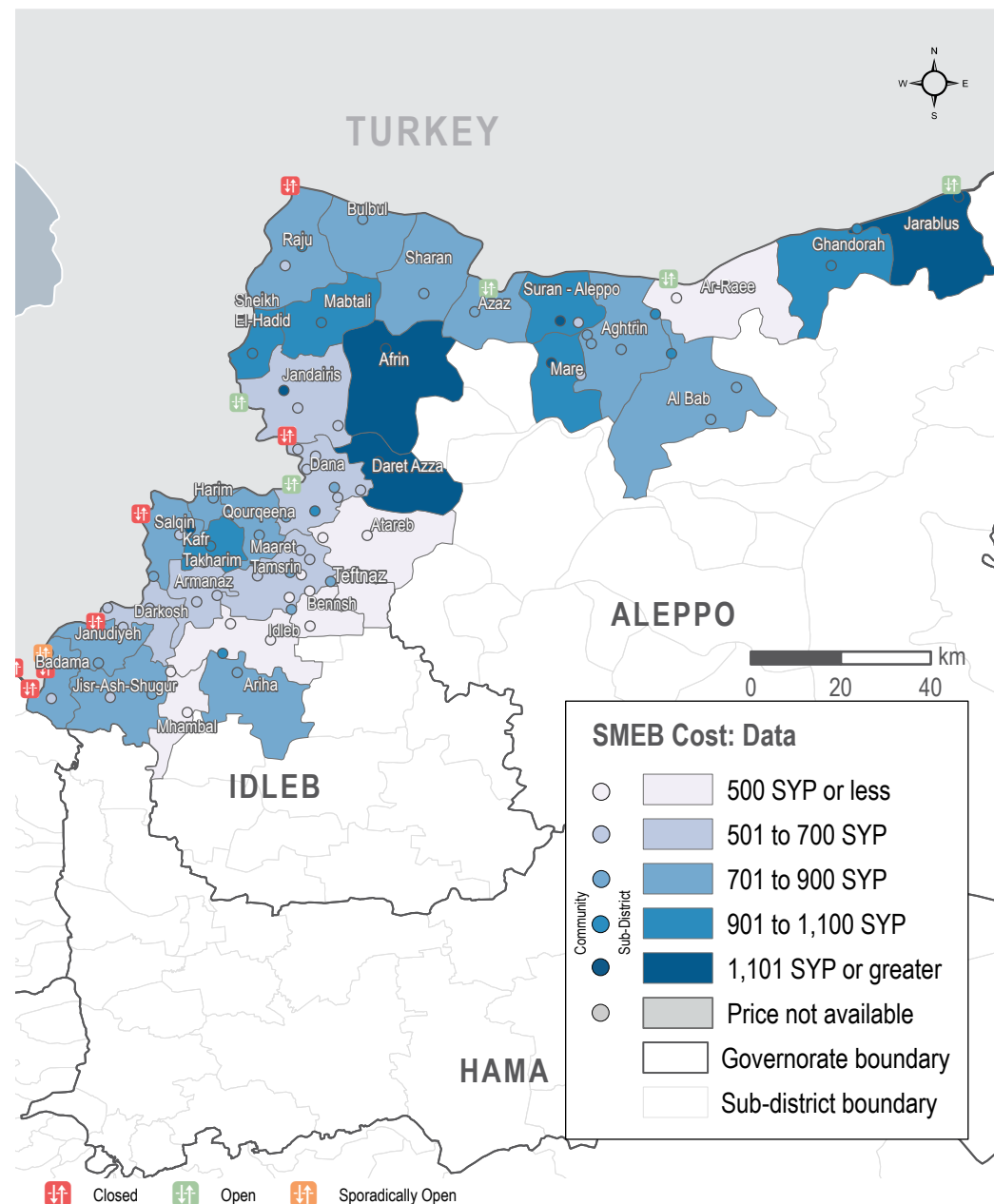
MEDIAN SMEB CELLPHONE DATA COST, BY MONTH

Thousand Syrian Pounds



SMEB CELLPHONE DATA COST

Sub-districts & Communities, Syrian Pounds



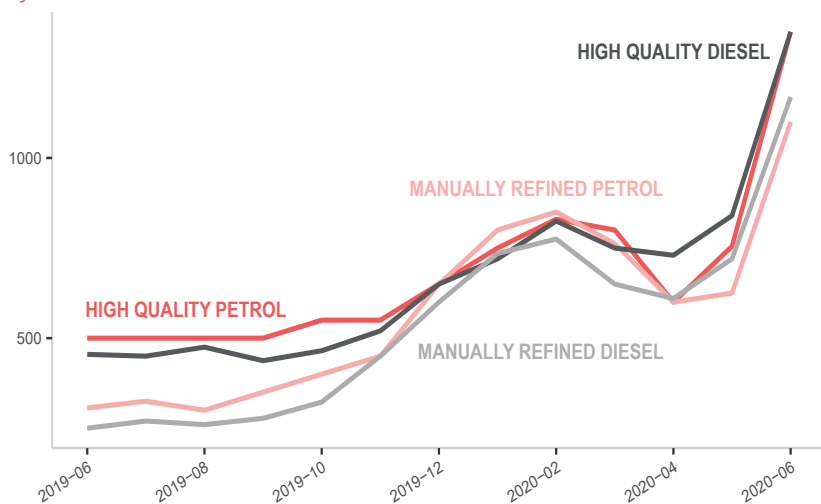
MEDIAN TRANSPORT FUEL PRICE

Diesel and Petrol, 1L (High Quality and Manually Refined), Syrian Pounds

Sub-district	Transport Fuel	One month change	Six month change	Sub-district	Transport Fuel	One month change	Six month change
Northwest Syria	1,233	64%	56%	Idleb	1,300	61%	73%
Afrin	1,233	NA	90%	Jandairis	1,167	56%	49%
Aghtrin	1,175	66%	68%	Janudiyeh	1,333	67%	NA
Al Bab	1,163	63%	NA	Jarablus	1,338	78%	NA
Ariha	1,225	57%	52%	Jisr-Ash-Shugur	1,244	51%	57%
Armanaz	1,394	81%	92%	Kafr Takharim	1,417	67%	100%
Ar-Ra'ee	1,325	83%	100%	Maaret Tamsrin	1,333	73%	66%
Atareb	1,500	77%	94%	Ma'btali	NA	NA	NA
A'zaz	1,306	77%	87%	Mare'	1,138	58%	55%
Badama	1,308	61%	NA	Mhambal	1,329	66%	NA
Bennsh	1,269	60%	73%	Qourqeena	1,346	69%	86%
Bulbul	1,129	59%	NA	Raju	1,292	67%	NA
Dana	1,246	61%	62%	Salqin	1,233	60%	56%
Daret Azza	1,633	118%	NA	Sharan	1,233	63%	NA
Darkosh	1,269	63%	61%	Sheikh El-Hadid	1,150	53%	NA
Ghandorah	1,275	71%	NA	Suran	1,197	71%	61%
Harim	1,217	60%	NA	Teftnaz	1,263	NA	74%

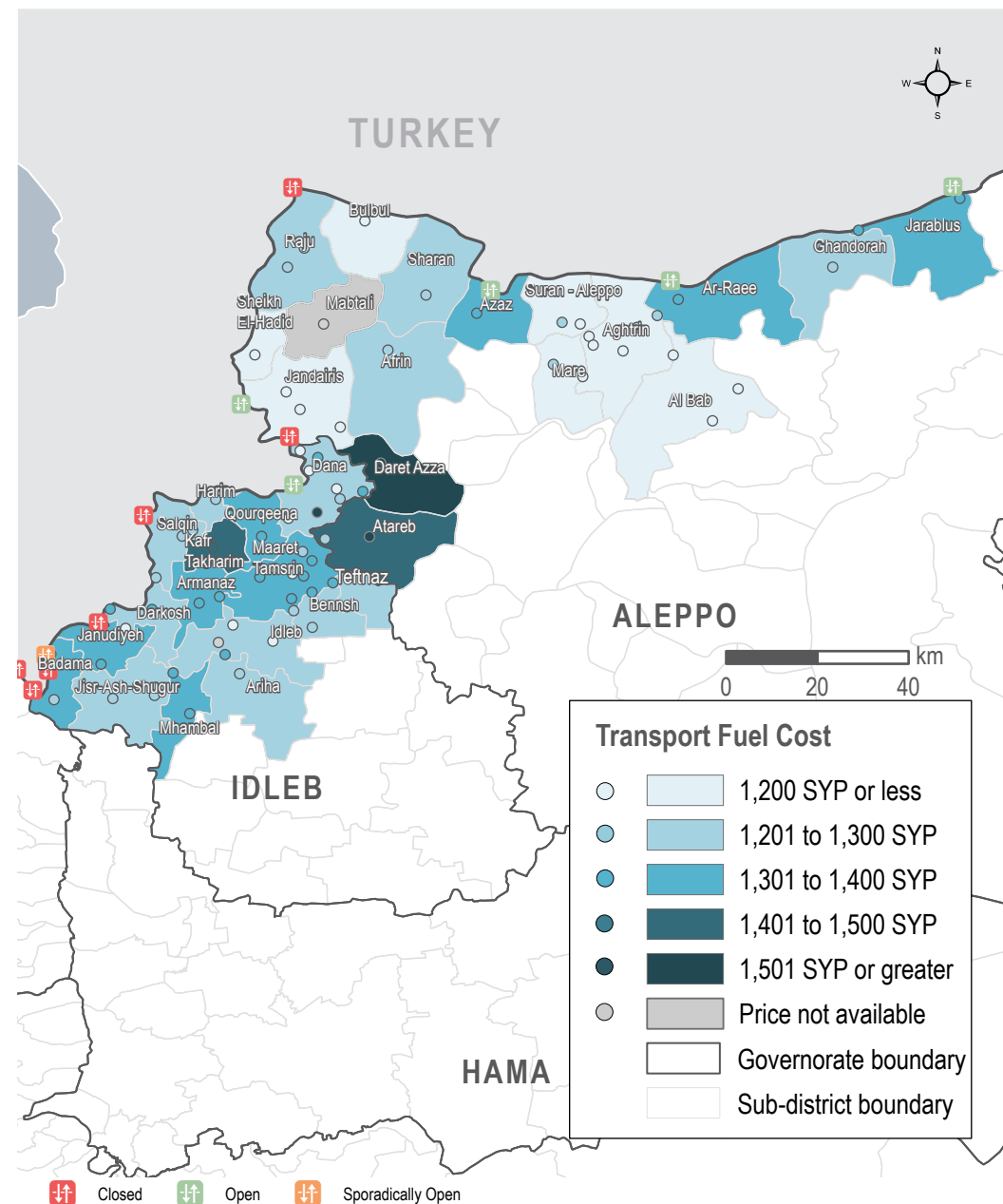
MEDIAN TRANSPORT FUEL COSTS, BY MONTH & TYPE

Syrian Pounds



TRANSPORT FUEL COST

Sub-districts & Communities, Syrian Pounds



NORTHWEST SYRIA - SMEB HYGIENE ITEMS

Idleb, Western & Northern Aleppo governorates

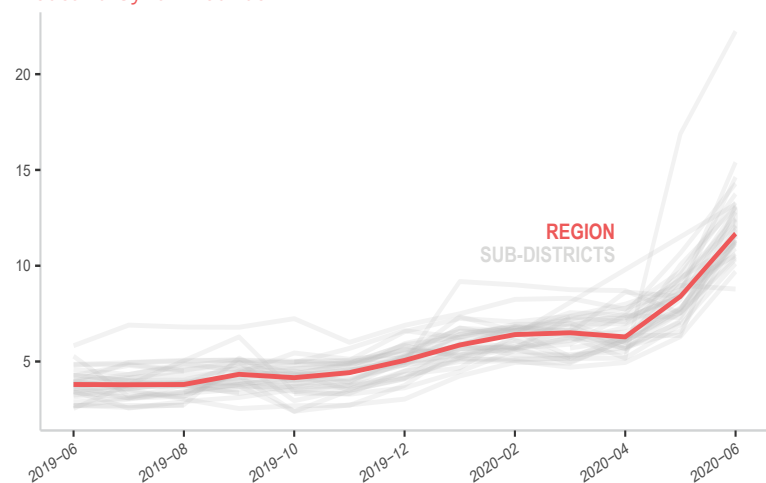
MEDIAN SMEB HYGIENE ITEMS' PRICE

12 bars of soap, 4 packs of 10 sanitary pads, 3kg of laundry/dish soap, 200g of toothpaste, Syrian Pounds

Sub-district	SMEB Hygiene Items	One month change	Six month change	Sub-district	SMEB Hygiene Items	One month change	Six month change
Northwest Syria	12,075	44%	107%	Idleb	9,659	32%	76%
Afrin	11,293	72%	152%	Jandairis	12,025	57%	111%
Aghtrin	10,113	62%	120%	Janudiyeh	NA	NA	NA
Al Bab	13,023	64%	130%	Jarablus	13,413	33%	157%
Ariha	15,400	77%	165%	Jisr-Ash-Shugur	10,425	40%	97%
Armanaz	12,600	54%	100%	Kafr Takharim	13,300	40%	81%
Ar-Ra'ee	11,191	43%	117%	Maaret Tamsrin	10,800	19%	82%
Atareb	15,767	7%	212%	Ma'btali	11,400	36%	95%
A'zaz	14,283	34%	129%	Mare'	10,784	27%	NA
Badama	11,431	36%	54%	Mhambal	11,426	59%	77%
Bennsh	14,625	70%	139%	Qourqeena	11,608	59%	105%
Bulbul	12,238	40%	86%	Raju	10,667	27%	NA
Dana	12,580	54%	94%	Salqin	10,850	38%	67%
Daret Azza	13,750	42%	76%	Sharan	13,121	106%	146%
Darkosh	11,031	25%	52%	Sheikh El-Hadid	10,350	38%	13%
Ghandorah	12,471	35%	194%	Suran	12,429	42%	118%
Harim	12,125	31%	80%	Teftnaz	13,217	NA	185%

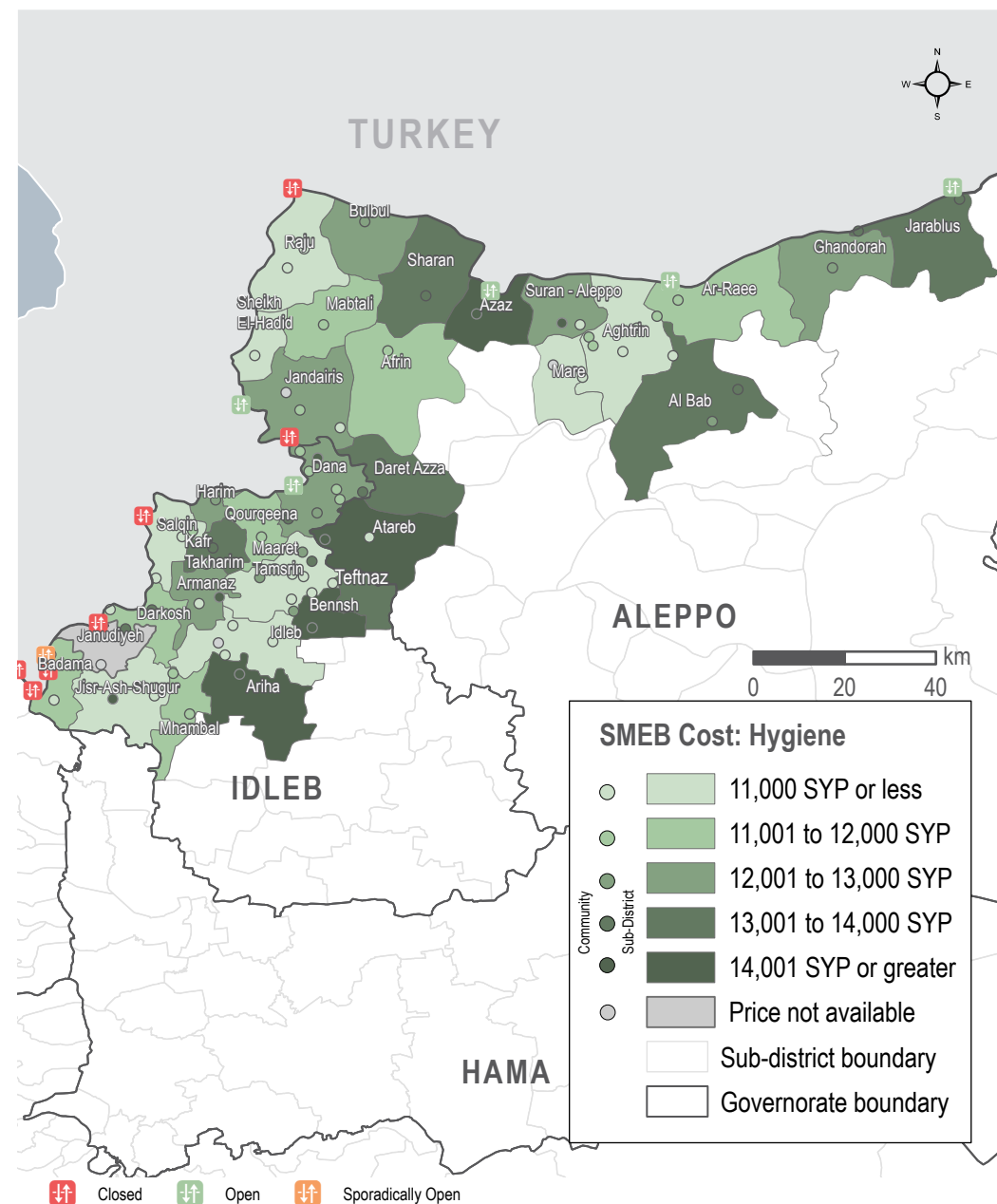
MEDIAN SMEB HYGIENE ITEMS' COSTS, BY MONTH

Thousand Syrian Pounds



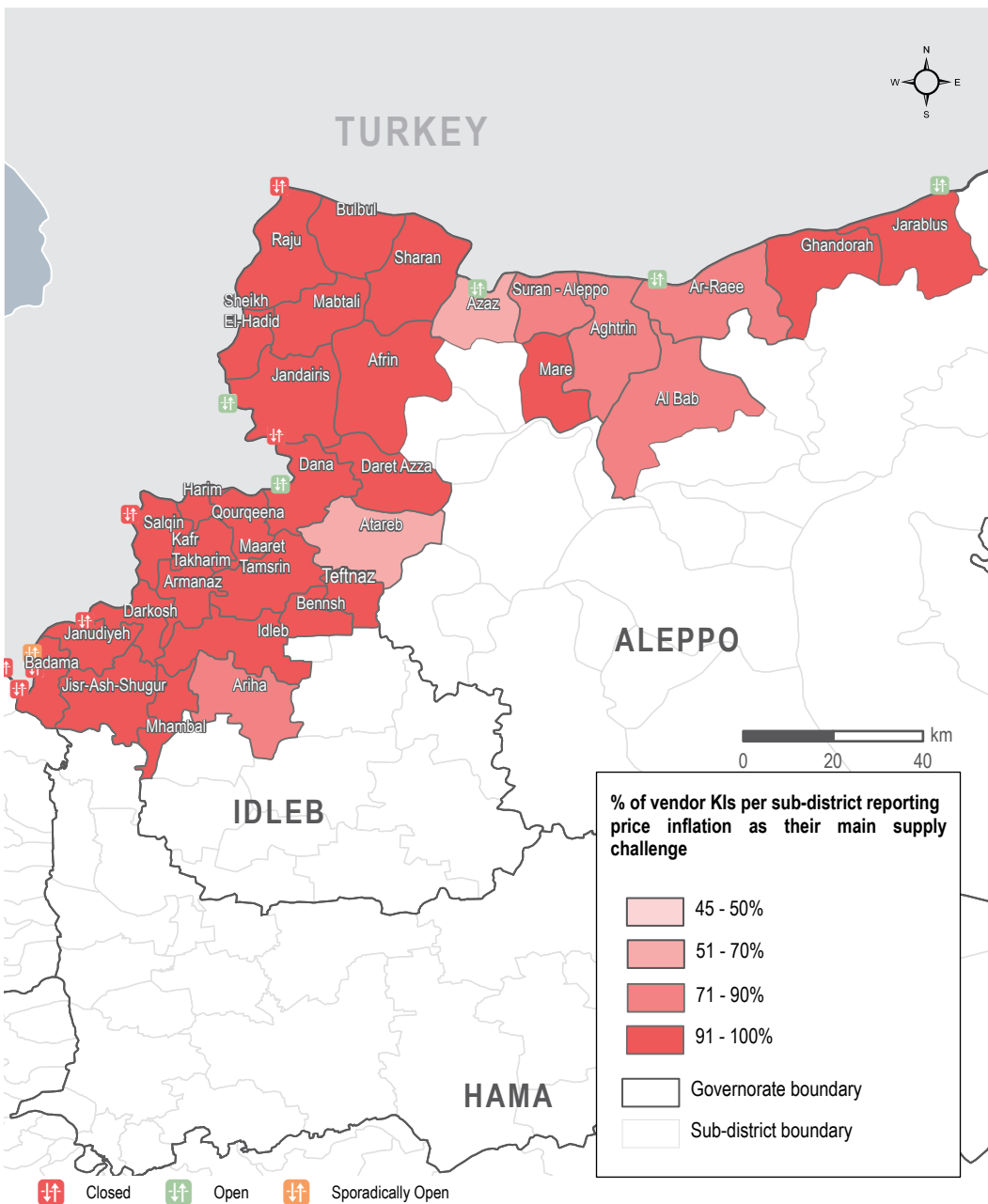
SMEB HYGIENE ITEMS' COST

Sub-districts & Communities, Syrian Pounds



SUPPLY CHALLENGES - PRICE INFLATION

Sub-districts



MARKET FUNCTIONALITY

During data collection, only 1% of the 2,162 vendor respondents across Aleppo and Idleb governorates reported having closed their shops.

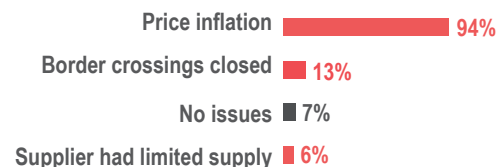
DELIVERY MECHANISMS

When asked about what delivery mechanisms existed in their communities, 79% of 2,156 vendor respondents reported that door-to-door delivery services were available. The most common delivery service was water trucking, reported by 72% of vendors in Aleppo governorate and by 84% of vendors in Idleb governorate. Daily food deliveries (excluding bread) were reported to be available by a small number of vendor respondents in Aleppo and Idleb (7% and 9%, respectively). Finally, 5% of vendor respondents in Aleppo governorate and 9% in Idleb governorate reported that daily bread deliveries were available in their communities.

SUPPLY CHALLENGES

While supply challenges reported by vendors were similar to last month's, the percentage of KIs reporting challenges increased since May. Out of 2,061 surveyed vendors, 93% reported facing one or more supply challenges. Price inflation was again the most commonly reported supply challenge, reported by 94% of total respondents and by 99% of vendors who reported facing supply challenge. This suggests that price inflation was a critical issue for vendors that may negatively impact availability of items if the value of the SYP continues to fall. This challenge was followed by 13% of total respondents who reported closure of border crossings impacting supply and 6% reporting that either their suppliers failed to meet demand or had limited supply (see figure 1).

Figure 1: Top 4 most commonly reported supply challenges by vendor KIs (2,061 respondents)*



*Multiple answers allowed, thus findings may exceed 100%

RESTOCKING

In addition to reported supply challenges, 3% of 2,061 surveyed vendors reported that they would be unable to restock if they were to run out of supplies. Inability to restock was most commonly reported by informal currency exchange vendors (8%), followed by pharmacists (5%). Challenges also existed with the amount of backstock vendors could draw upon. Vendors were asked after how many days they would hypothetically run out of stock if supply was to be cut; fifty-two percent (52%) of respondents reported that they would run out of stock in less than three days and 29% would run out in 3 to 7 days (see figure 2). Water trucking and gas vendors in Aleppo governorate most commonly reported that they would run out of stock in less than 3 days (87% and 82%, respectively), and water trucking and vegetable vendors most commonly reported similar timeframes in Idleb governorate (87% and 83%, respectively).

Figure 2: Reported number of days before all types of vendors would hypothetically run out of stock, if supply lines were to be cut (2,061 respondents)



AVAILABILITY OF USD BANKNOTES

Of the 209 informal exchange vendors who were asked if they had limited stock of any USD banknote denominations, 89% of vendors in Aleppo governorate and 95% of vendors in Idleb governorate reported having limited stock of one or more denomination. Vendors in Aleppo most commonly reported having limited stock of 20 USD banknotes (62% of vendors) as well as 10 USD and 50 USD banknotes (both reported by 61% of vendors). In Idleb, 10 USD banknotes were most commonly reported to be limited in stock (67% of vendors), followed by 20 USD and 5 USD banknotes (66% and 64% of vendors, respectively).

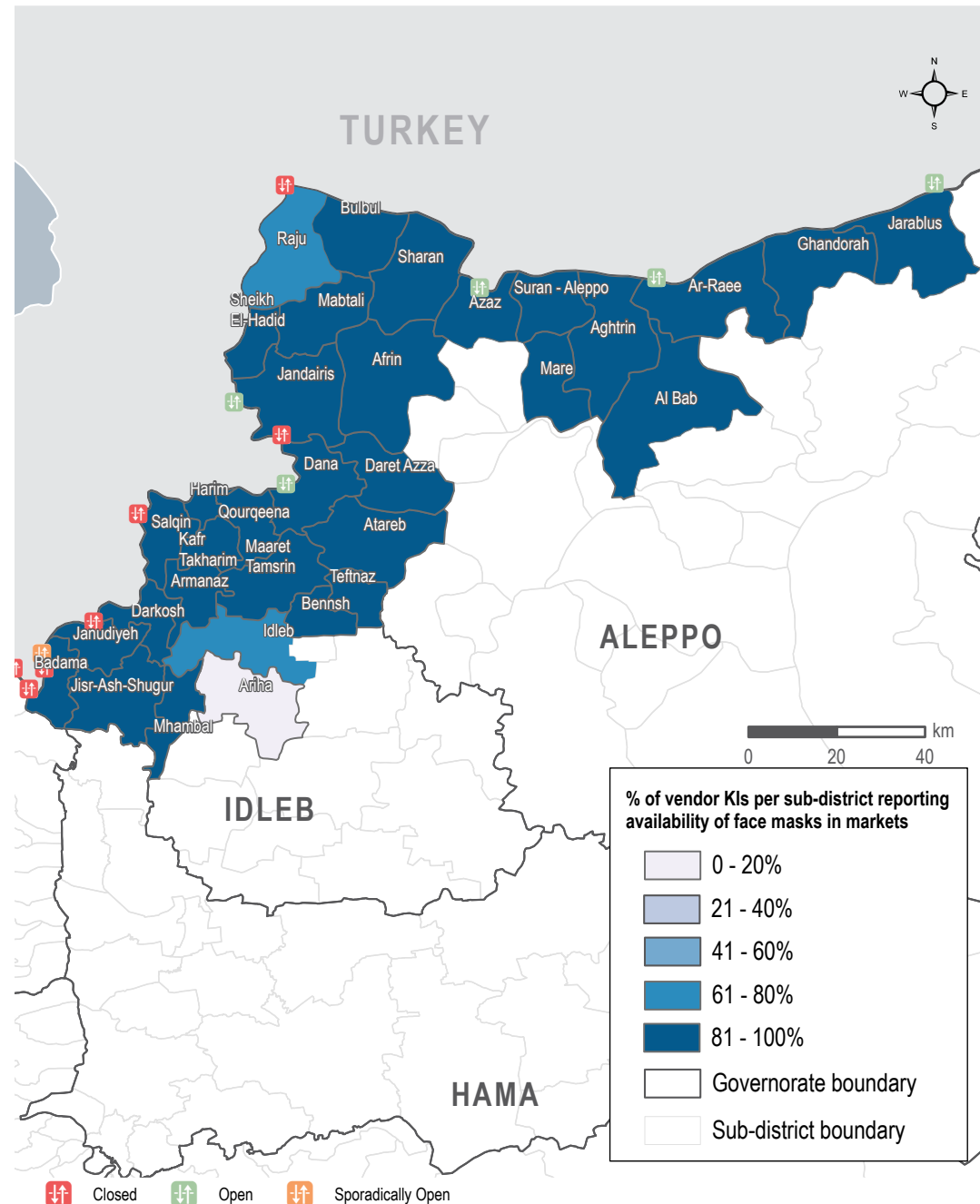
MEDIAN PRICE OF COVID-19 ITEMS

Syrian Pounds

Sub-district	Face mask (1 piece)	Plastic gloves (box of 100)	Sterile alcohol (1 litre)	Hand sanitiser (500 ml)	Bottled bleach (1 litre)	Trash bags (roll of 30)
Northwest Syria	600	15,000	9,500	3,500	1,200	2,500
Afrin	1,200	19,500	13,500	12,000	2,000	5,500
Aghtrin	500	15,000	10,500	6,125	1,500	1,600
Al Bab	500	25,000	15,000	9,000	1,800	1,800
Ariha	NA	20,000	NA	NA	1,000	NA
Armanaz	700	7,500	8,500	3,300	1,200	2,800
Ar-Ra'ee	800	20,000	9,000	3,200	1,600	1,600
Atareb	350	14,500	12,000	4,500	1,300	1,900
A'zaz	700	21,000	11,000	3,250	1,750	2,000
Badama	625	8,200	8,500	3,200	1,200	3,000
Bennsh	500	17,000	8,600	1,500	1,500	4,000
Bulbul	715	8,700	8,600	3,400	1,163	2,625
Dana	600	8,650	12,000	3,500	1,200	2,800
Daret Azza	500	15,000	13,750	9,000	1,300	1,500
Darkosh	650	20,000	12,000	6,000	1,000	2,375
Ghandorah	450	17,750	9,500	3,529	1,150	1,200
Harim	700	8,000	7,400	2,800	1,100	2,800
Idleb	650	12,000	10,000	6,000	1,000	3,000
Jandairis	700	7,400	8,000	3,500	1,100	2,400
Janudiyeh	800	18,000	8,000	2,000	1,300	2,500
Jarablus	550	19,000	8,900	2,800	1,100	1,200
Jisr-Ash-Shugur	650	7,000	8,500	3,400	1,000	2,500
Kafr Takharim	450	19,000	12,500	2,500	1,350	4,000
Maaret Tamsrin	700	7,500	8,600	3,300	1,200	3,000
Ma'btali	300	15,000	NA	4,412	1,200	NA
Mare'	500	4,250	11,000	8,000	1,600	1,500
Mhambal	550	20,000	10,000	NA	1,500	NA
Qourqeena	600	7,200	8,500	3,300	1,100	2,800
Raju	500	15,625	13,000	5,900	1,300	3,400
Salqin	600	7,500	8,000	3,500	1,200	2,400
Sharan	525	7,000	8,000	3,200	1,100	2,600
Sheikh El-Hadid	600	500	14,000	6,000	1,000	NA
Suran	650	12,500	11,600	3,900	1,700	2,500
Teftnaz	500	17,000	8,400	1,500	1,450	4,000

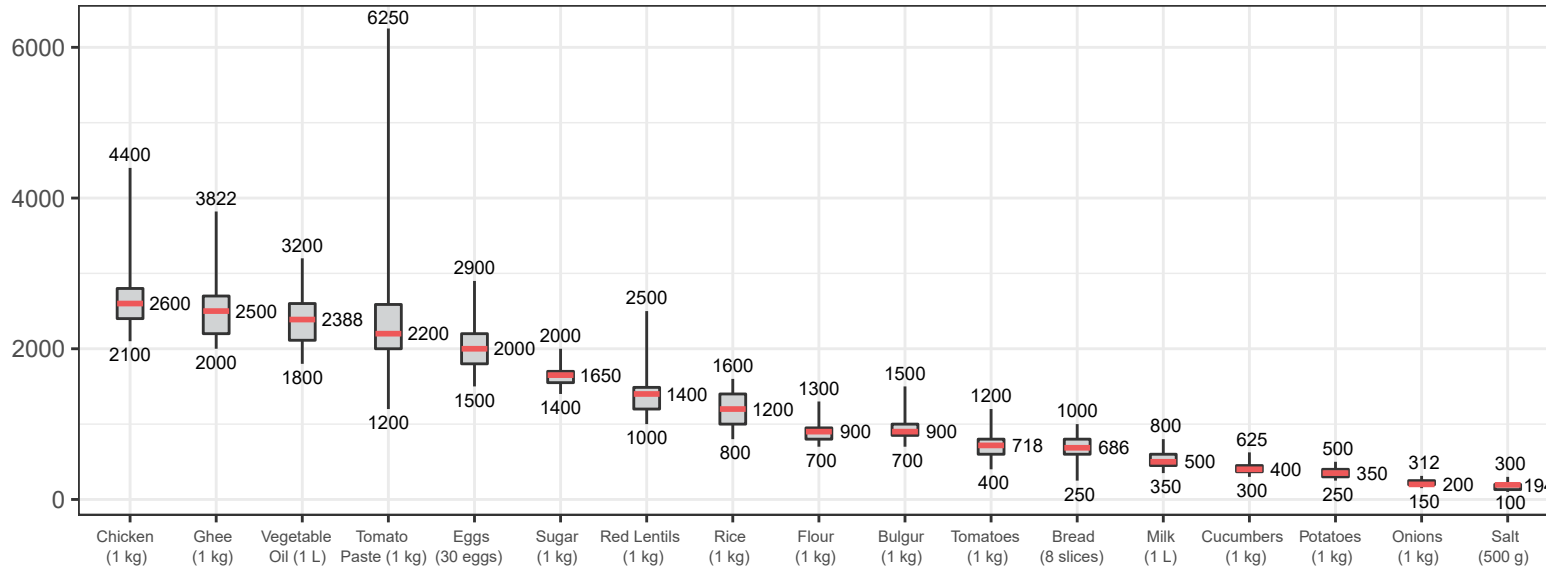
AVAILABILITY OF FACE MASKS

Sub-districts



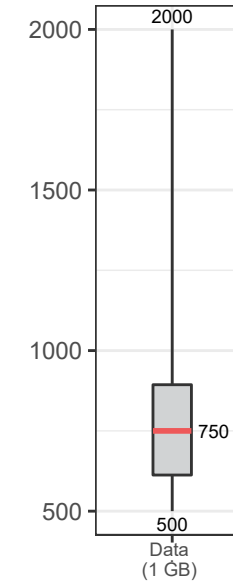
ASSESSED FOOD ITEMS

Syrian Pounds



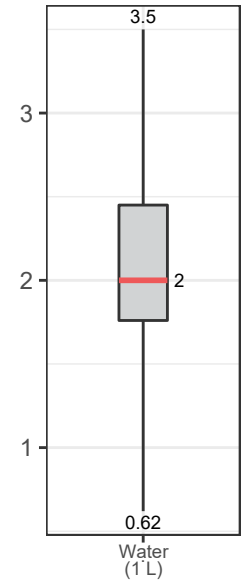
CELLPHONE DATA

Syrian Pounds



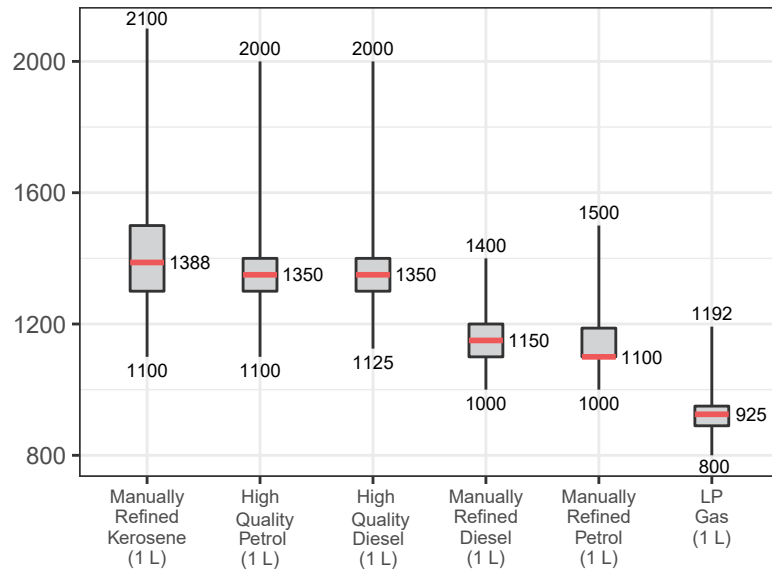
WATER TRUCKING

Syrian Pounds



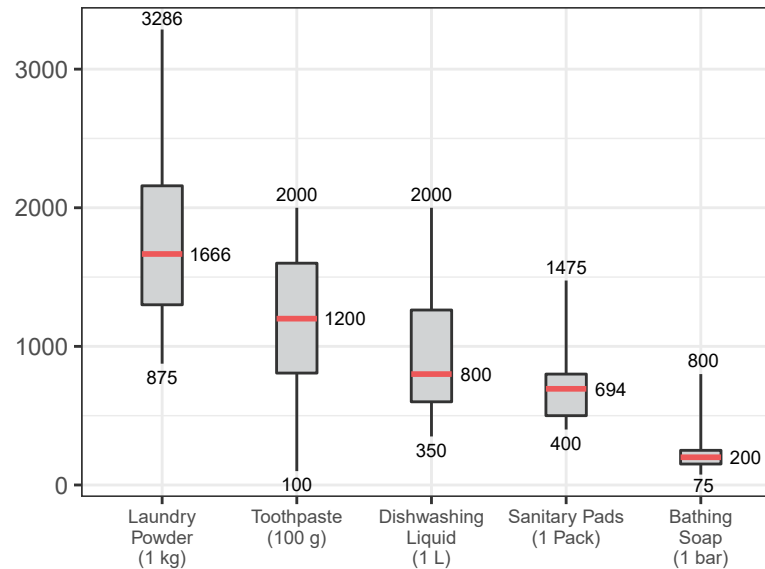
ASSESSED FUEL ITEMS

Syrian Pounds

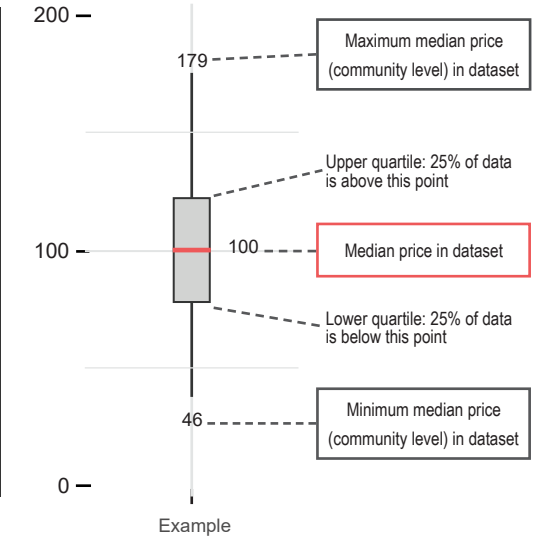


ASSESSED HYGIENE ITEMS

Syrian Pounds



READING BOXPLOTS



METHODOLOGY

In order to be included in the Syria Market Monitoring Exercise, markets must be permanent in nature, large enough to support at least two wholesalers, and diverse enough to provide a sufficient variety of goods and commodities. Additionally, the shops surveyed within each market must be housed in permanent structures and must sell certain items to be eligible for inclusion. Participating organisations train their enumerators on the Market Monitoring methodology and data collection tools using standard training materials developed by REACH. Each enumerator aims to assess three to five shops of each type in the main market in their assigned sub-district, using surveys to collect information about the cheapest prices of each item and whether there are any barriers in the supply chain. In sub-districts where direct surveying by enumerators is not possible, data collection is conducted remotely through key informants such as shop owners, suppliers and consumers. A survey form is deployed on KoBo each month to capture price and stock information from different types of establishments, including grocery stores, fuel traders, currency exchange shops, water trucking services and mobile phone shops, among others. Nearly all participating partners submit their data to these KoBo forms, using the KoBoCollect Android app to upload data. A small number of partners, by prior permission, collect data using fully harmonised data collection tools deployed on other platforms, then submit their raw data to REACH for standardisation, compilation and cleaning.

Following data collection, REACH compiles and cleans all partners' data, normalising prices and cross-checking outliers. The cleaned data is then analysed by SMEB costs, components of the SMEB, and by commodities. These trends are observed at the sub-district-level and, when possible,

at the community-level. Prices are divided into quartiles and boxplots are created to assist CWG members in understanding the distribution of prices across the northeast and northwest of Syria. To illustrate local variations in prices and availability, REACH uses the collected data to map the price of the SMEB in each sub-district and adds illustrations of surrounding border crossings, with data sourced from the United Nations Office for the Coordination of Humanitarian Affairs (OCHA). In addition, each SMEB component costs and transport fuel prices are graphed to visualise trends over time.

The cleaned datasets are available on the [Humanitarian Data Exchange](#) website and the [REACH Resource Centre](#) and are distributed to all participating partners, as well as to interested clusters and the broader humanitarian community.

Calculating 'median cheapest price'

This figure is calculated by taking the median of the minimum-reported prices of a region's sub-districts. In turn, the minimum-reported prices for each sub-district were taken from the median of the minimum-reported prices of the constituent towns assessed.

Calculating Survival Minimum Expenditure Basket (SMEB) costs

The cost of a SMEB is calculated for each assessed sub-district by calculating the median cheapest price of each SMEB commodity in that sub-district, then multiplying these medians by the number of units that an average Syrian household requires to purchase in a month. The composition of the SMEB can be found on [page 1](#). SMEB vegetables includes potatoes, tomatoes, onions and cucumbers.

Calculating price trends over time

One month and six-month price changes and trends in this factsheet are calculated only

with the comparable assessed communities of a sub-district with consistent coverage across months. On the other hand, in the dataset, medians are calculated taking all assessed communities for the current month in consideration. Therefore, prices and percentage changes within the tables of this factsheet may slightly differ from the current month's dataset medians. In the narrative, both regional median SMEB values are shared; the SMEB value including all assessed communities that specific month, and the SMEB value only taking in consideration communities with consistent coverage since the previous month.

Changes to coverage

Given security and access constraints in the south of Syria, data collection has been unable to take place since July 2018. Escalation of conflict in October 2019 has resulted in limited coverage in northeast Syria since then.

Challenges and limitations

As the Syria Market Monitoring Exercise currently includes 23 partners based in 2 hubs, achieving a consistent approach is inherently challenging. Participating organisations are therefore requested to adopt harmonised data collection methodologies and tools to ensure that the data uploaded is as accurate as possible. Because this exercise collects data directly from vendors and relies on partner organizations for its wide coverage, Market Monitoring may sporadically lose coverage temporarily or for longer periods of time due to challenges in accessing locations or loss in the shared data collection capacity of the project. This impacts the ability to report on trends, as can be seen in the line graphs and 'NA' values in the tables.

ABOUT REACH

REACH Initiative facilitates the development of information tools and products that enhance the capacity of aid actors to make evidence-based decisions in emergency, recovery and development contexts. The methodologies used by REACH include primary data collection and in-depth analysis, and all activities are conducted through inter-agency aid coordination mechanisms. REACH is a joint initiative of IMPACT Initiatives, ACTED and the United Nations Institute for Training and Research - Operational Satellite Applications Programme (UNITAR-UNOSAT). For more information please visit our website:

www.reach-initiative.org. You can contact us directly at: geneva@reach-initiative.org and follow us on Twitter [@REACH_info](https://twitter.com/REACH_info)

ABOUT THE CASH WORKING GROUP

The Cash Working Group (CWG) was established in May 2014 to analyse the impact of the ongoing conflict on markets in Syria and guide the implementation of humanitarian cash and voucher programmes within those markets. REACH and the CWG have been partners on the Syria Market Monitoring Exercise since early 2015.

About REACH's COVID-19 response

As an initiative deployed in many vulnerable and crisis-affected countries, REACH is deeply concerned by the devastating impact the COVID-19 pandemic may have on the millions of affected people we seek to serve. REACH is currently working with Cash Working Groups and partners to scale up its programming in response to this pandemic, with the goal of identifying practical ways to inform humanitarian responses in the countries where we operate. COVID-19-relevant market monitoring and market assessments are a key area where REACH aims to leverage its existing expertise to help humanitarian actors understand the impact of changing restrictions on markets and trade. Updates regarding REACH's response to COVID-19 can be found in a [devoted thread](#) on the REACH website. Contact geneva@impact-initiatives.org for further information.