



IDP Camp Profile - Ashti IDP

Sulaymaniyah, Iraq
December 2015

Management agency: Government/United Nations
Manager/Focal point: Payam Salam Hama Shareef
Phone number: 7501424646
Email: ashticamp@hotmail.com
Registration actor: CDO/Camp management

Summary

This profile provides an overview of conditions in Ashti IDP camp. Primary data was collected through household surveys on 13/12/2015. Households were randomly sampled to a 95% confidence and 10% margin of error, based on population figures provided by CCCM. In some cases, additional information from camp managers has been used to support findings. Round III of data collection was in September 2015.

Camp Overview

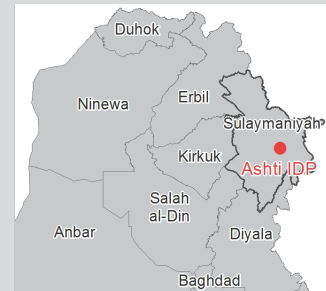
of individuals: 7475
of households: 1380
Date opened: 24/06/2015
Accommodation: 1038
Ongoing extension: yes
Planned capacity: 2630
Camp area: 0.26 km²

Demographics

50% male / 50% female

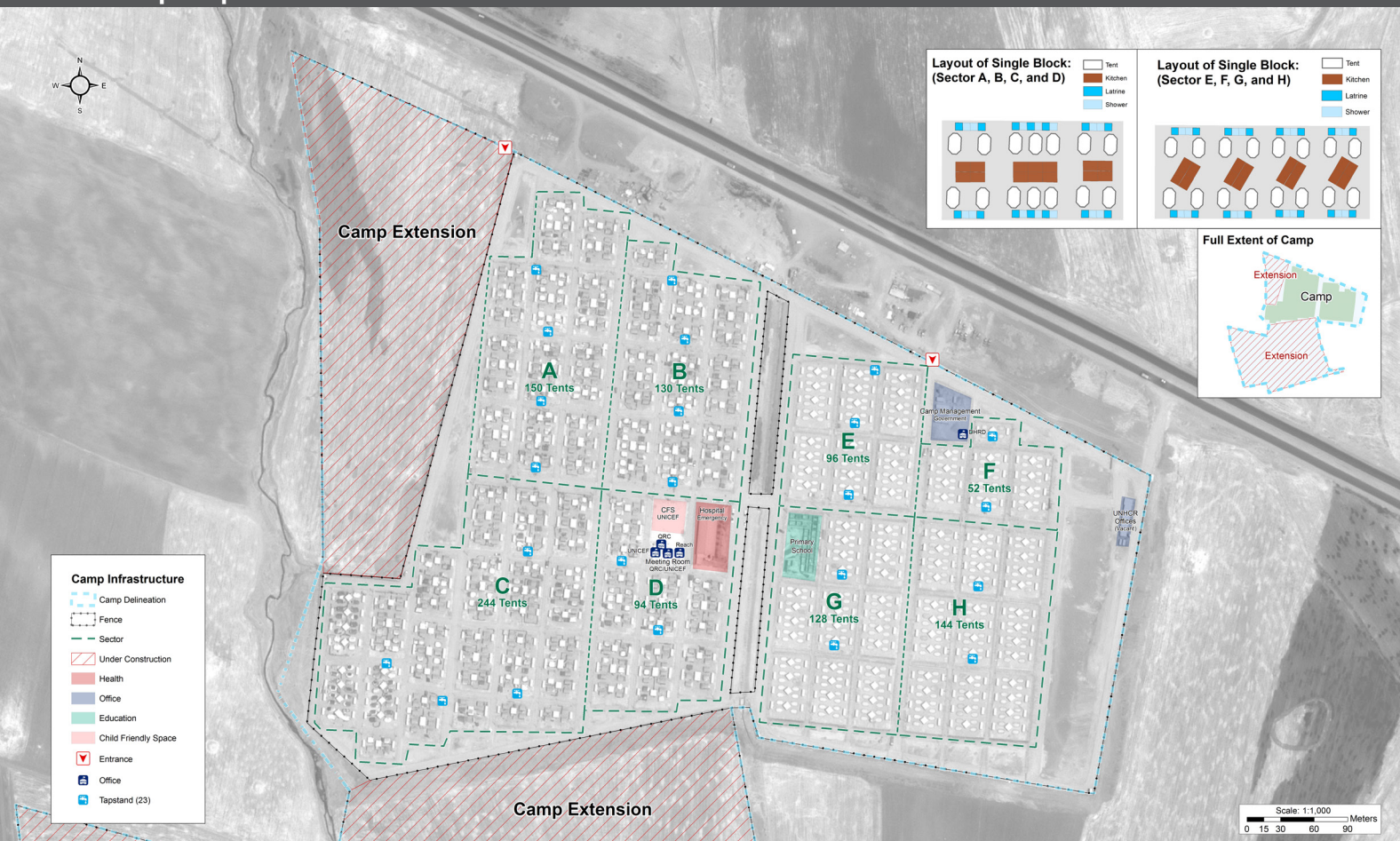
2%	Over 60	1%
20%	18-59	19%
7%	12-17	9%
9%	6-11	10%
12%	0-5	11%

Location Map



IDP Camp Map - Ashti IDP

Lat. 35° 25' 3.431" N Long. 45° 36' 21.359" E



Sectoral Minimum Standards

		Target	Previous Round	Current Round	Achievement
Education	% of children aged 6-11 attending formal school	100%	90%	85%	●
	% of children aged 12-17 attending formal school	100%	70%	66%	●
Food	% of households accessed Family Food Parcel or equivalent in the past month	100%	99%	100%	●
Health	Health services are available on-site or within walking distance	yes	yes	yes	●
CCCM	Average open area per household	min. 30m ²	251m ²	170 m ²	●
Protection	% of IDPs registered on an individual basis (MODM/DDM)	100%	97%	100%	●
	% of households accessed shelter assistance since arrival at the camp	100%	100%	100%	●
	Average covered area per person	min. 3.5m ²	3.8m ²	4.6 m ²	●
Shelter	Average number of individuals per tent	max.5	6	7	●
	# of persons per latrine	max. 20	6	7	●
	# of persons per shower	max. 20	6	7	●
WASH	Frequency of solid waste disposal at least weekly	min. weekly	yes	yes	●

Targets based on minimum standards agreed with the CCCM Cluster, Iraq. Findings based on household-level data, enumerator field observations, and camp management documentation
● Minimum standard reached, ● More than 50% minimum standard reached, ● Less than 50% of minimum standard reached or not at all



CCCM CLUSTER
SUPPORTING DISPLACED COMMUNITIES

For more information on this profile please contact:
CCCM Cluster: iraqimo@cccmcluster.org
REACH Initiative: melissa.meinhart@reach-initiative.org

REACH An initiative of
IMPACT Initiatives
ACTED and UNOSAT



IDP Camp Profile - Ashti IDP

Sulaymaniyah, Iraq
December 2015

Management agency: Government/United Nations
Manager/Focal point: Payam Salam Hama Shareef
Phone number: 7501424646
Email: ashticamp@hotmail.com
Registration actor: CDO/Camp management

Shelter

Top three observed shelter types*

Tent on cement base	99%	<div></div>
Tent on ground	1%	<div></div>
n/a	n/a	

*Households were asked to select all shelter typologies within household.

Winterization and household items

98%	reported a second fly sheet
99%	reported at least one stove or space heater
42%	reported at least one blanket per person
1	average number of carpets per HH
5	average number of mattresses per HH

Hazards

1%	reported exposed electrical cables at site
----	--

Shelter Improvement

36%	reported making own improvements to their shelter
51 USD	average total reported cost of shelter improvements

*Conversion rate: 1 USD = 1,106.37 IQD

Households reporting flooding in past three months, by type

No flooding	100%	<div></div>
Flooding (temporary damage)	0%	
Flooding (permanent damage)	0%	

Household Income

48%	reported a household income of under 10 USD in the past month (including aid, gifts or pension)
86%	reported humanitarian aid within top three sources of livelihood in past month

Protection

Family Separation

0%	reported hosting unaccompanied or separated minors
26%	reported that other family members intended to join them

Vulnerable groups

Pregnant / lactating women	20%	<div></div>
Chronically ill individual(s)	3%	<div></div>
Disabled individual(s)	2%	<div></div>

Intentions

0%	planned to move to a different location in next 3 months
----	--

Restrictions

0%	reported entry or exit restrictions during daylight hours
----	---

Documentation

2%	reported missing civil documents
----	----------------------------------

Food Security and Coping Strategies

Reported access to food assistance

100%	accessed food assistance in past month
91%	received Public Distribution System (PDS) in past month

Top three reported food consumption coping strategies

Cheaper Food	78%	<div></div>
Borrowed Food	71%	<div></div>
Less meals	14%	<div></div>

Top three reported livelihood coping strategies

Bought food on credit	48%	<div></div>
Sold HH assets	48%	<div></div>
Spent savings	34%	<div></div>

WASH

Latrines and showers

100%	reported access to functional latrines
100%	reported access to functional showers

Top three reported methods of waste removal

Collected	100%	<div></div>
n/a	n/a	
n/a	n/a	

Primary reported drinking water source

0%	connection inside the home to collective water storage
0%	connection inside the home to private water storage
100%	communal water tap outside the shelter
0%	purchased from shop
0%	open well
0%	other source

Access to water

0%	reported 24 consecutive hours without access to water in the past month
----	---

Community Organisation

IDP committees

100%	reported awareness of IDP committee(s)
------	--

Of these, IDPs reported that camp committees were as follows:

97%	representative of camp composition
0%	included female representation
33%	had elected representative(s)
64%	had a complaints mechanism

Access to fire-extinguishers

20%	reported awareness of available fire-extinguishers
-----	--