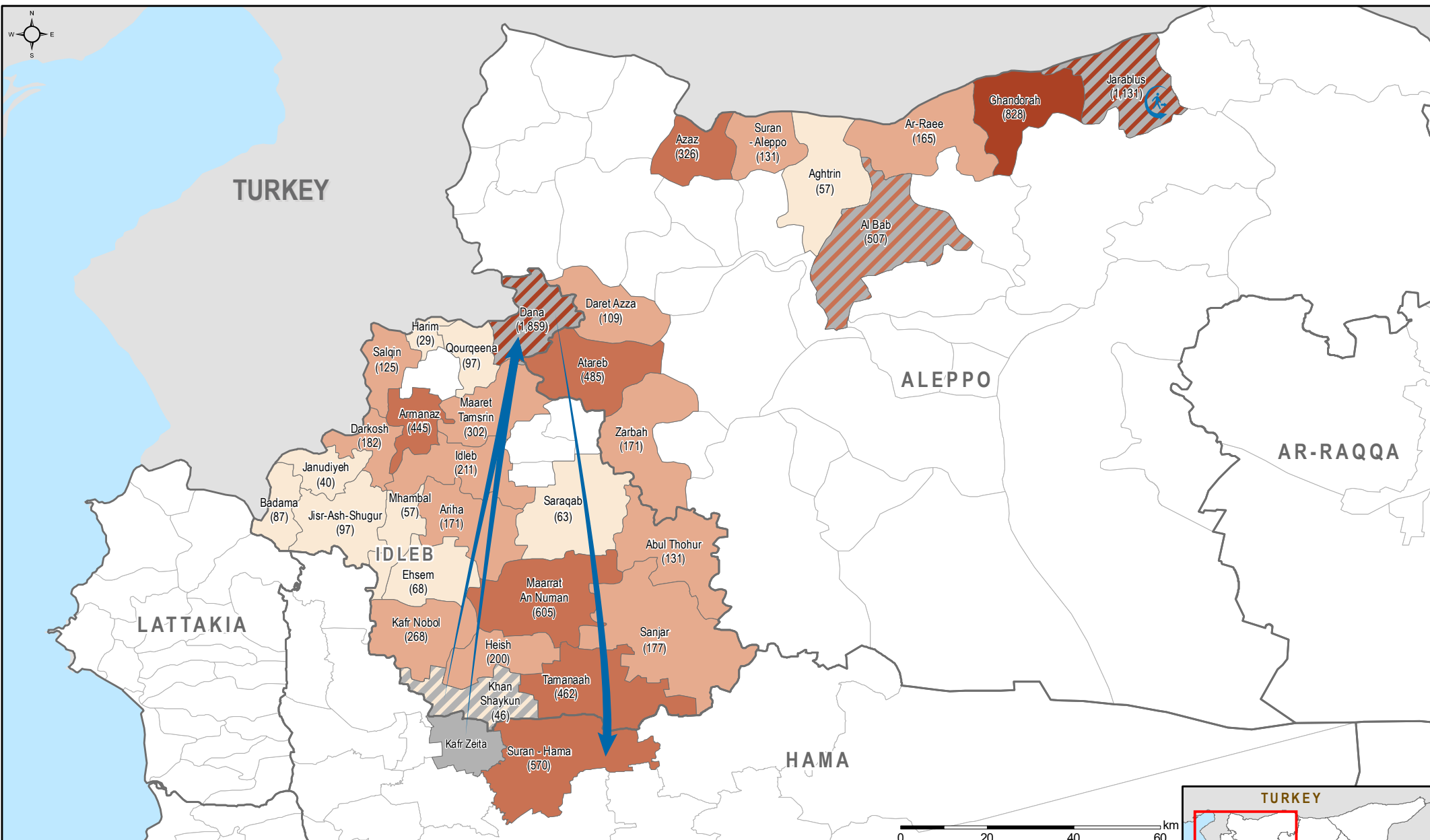


SYRIA - IDP Situation Monitoring Initiative (ISMI) Bi-Weekly Update

Major Reported IDP Movements (1/7/18 - 15/7/18)

For Humanitarian Purposes Only
Production date : 29 July 2018



Percent of total arrivals by sub-district (IDPs) (1/7/18 - 15/7/18)

- 0.2% - 1.0%
- 1.1% - 3.0%
- 3.1% - 8.0%
- 8.1% - 18.2%

Most common sub-districts of departure (>610 IDP arrivals from sub-district)

- Outward displacement
- Inward & outward displacement

Administrative boundaries

- Governorate
- Subdistrict

Major displacements (>510 IDPs)

- External
- Internal

CCCM Cluster Turkey hub Source: CCCM cluster database, Turkey hub. Feedback: CCCM Cluster Northern Syria. Email: syria.cross.border.info@cccmcluster.org info: <http://www.globalccmcluster.org> <https://www.humanitarianresponse.org>

Data sources: Administrative boundaries: OCHA COD
IDP movement data: REACH, SRN
Coordinate System: GCS WGS 1984
Contact: reach.mapping@impact-initiatives.org

Disclaimer: The boundaries and names shown and the designations used on this map do not imply official endorsement by the United Nations. The data for this map is reported by humanitarian actors and a limited number of other sources, who may be parties to conflict. The data has not been independently verified and is subject to error or omission, deliberation or otherwise by the various sources. This data is for humanitarian use only. Some figures reported may be repeated displacements.

