

Syria - City of Idleb

Shelter Damage Assessment as of 1st August 2016

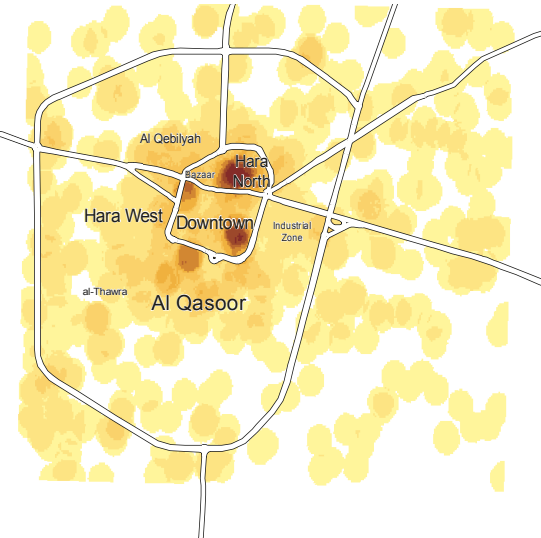
For Authorized Distribution Only - For Humanitarian Purposes Only
Production Date: 23 October 2016



Damage Zones 01.08.2016

- Destroyed
- Severe Damage
- Moderate Damage
- ▨ Destroyed, low density
- ▨ Severe Damage, low density
- ▨ Moderate Damage, low density

Damage Density - 01.08.2016



Damage Increase - 06.04.2015 to 01.08.2016



Image copyright: DigitalGlobe, Imagery provided by: U.S. Department of State, Humanitarian Information Unit, NextView License - WV02 - Resolution 0.50 cm - Date: 19.04.2016
Shelter Damage Assessment Data: UNOSAT/REACH
Projection: WGS 1984 UTM Zone 37N
File: REACH_SYR_Damage_Assessment_Idleb_1Aug16_A3

Note: Data, designations and boundaries contained in this map are not warranted to be error-free and do not imply acceptance by the REACH partners, donors and associated persons mentioned in this map.

802 Buildings Damaged Between June 2015 and August 2016
119 destroyed
206 severely damaged
477 moderately damaged

