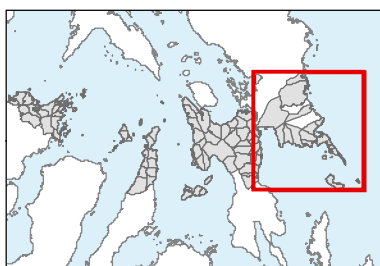
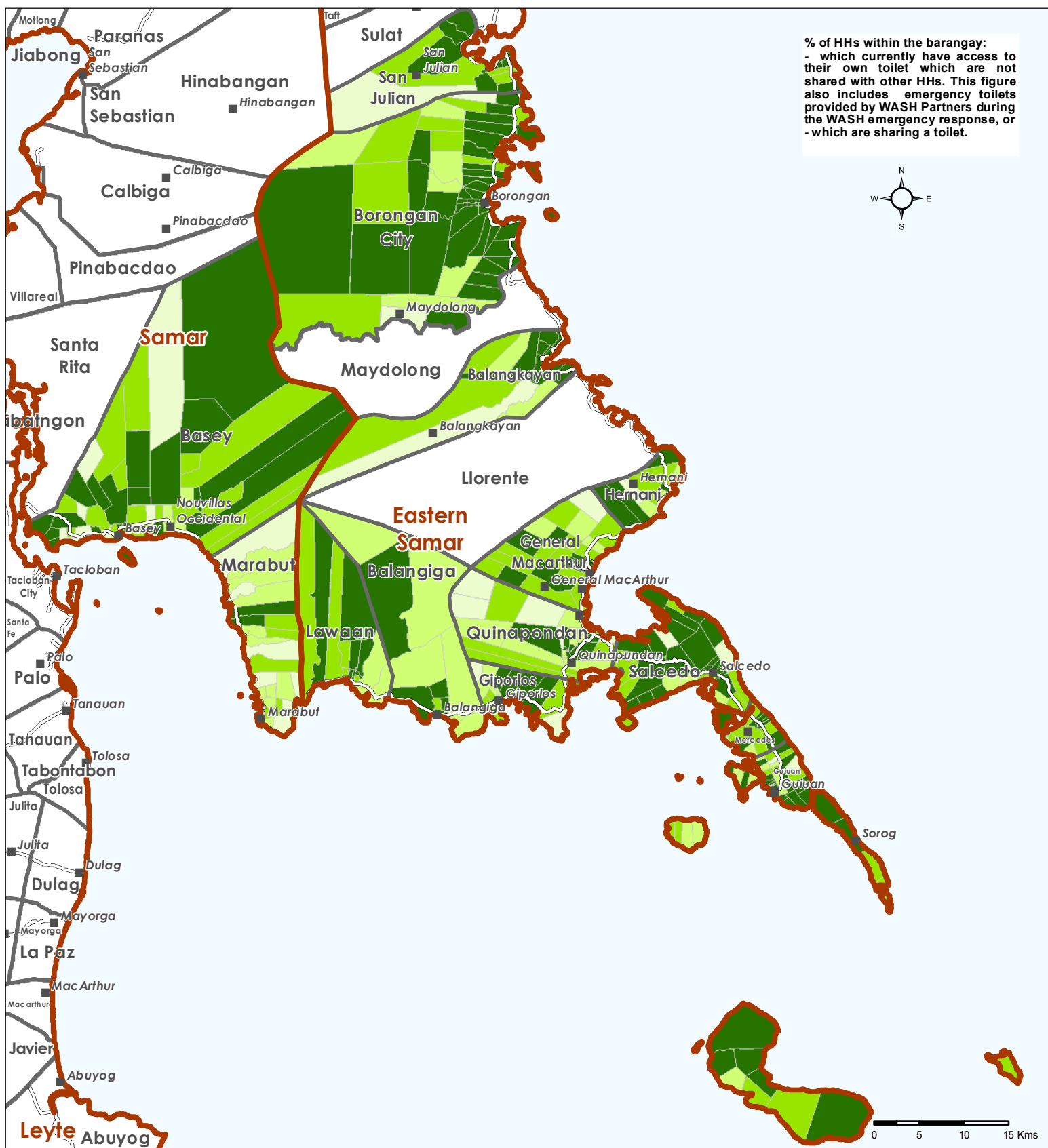


PHILIPPINES - Typhoon Haiyan- November 2013

WESTERN SAMAR & EASTERN SAMAR Provinces

WASH Baseline Barangay Assessment April 2014
Percentage of Households with access to toilets

For Humanitarian Relief Purposes Only
Production date : 21 May 2014



- % HH with access to toilets**
- 0 - 25
 - 25 - 50
 - 50 - 75
 - 75 - 100
 - Interviewee Do not Know
 - Provinces
 - Municipalities

Data sources:
WASH Assessment: REACH / WASH Cluster
Administrative Boundaries: OCHA COD
Cities and Roads: OSM
File: PHL_AccessToilet_Prov_Samar_21MAY2014_A4
Contact: reach.mapping@impact-initiatives.org

Note: Data, designations and boundaries contained on this map are not warranted to error-free and do not imply acceptance by the REACH partners, associated donors mentioned on this map.

All maps available at
<http://philippines.humanitarianresponse.info/>