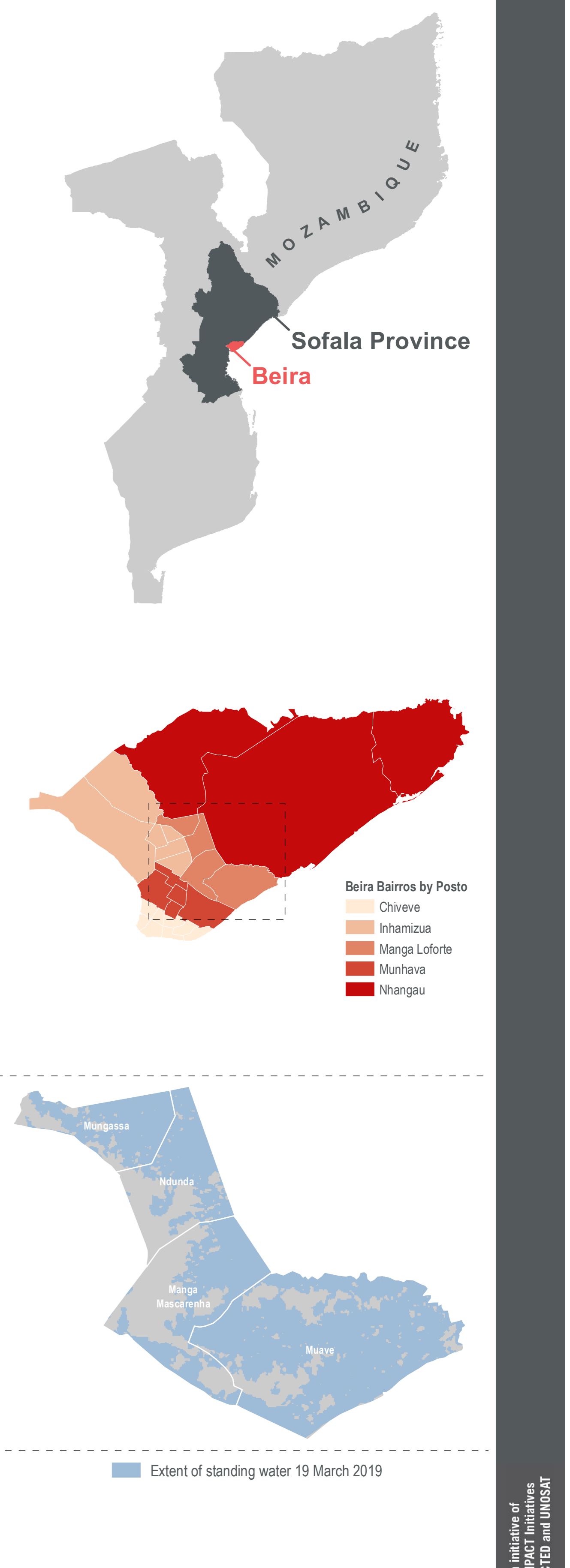
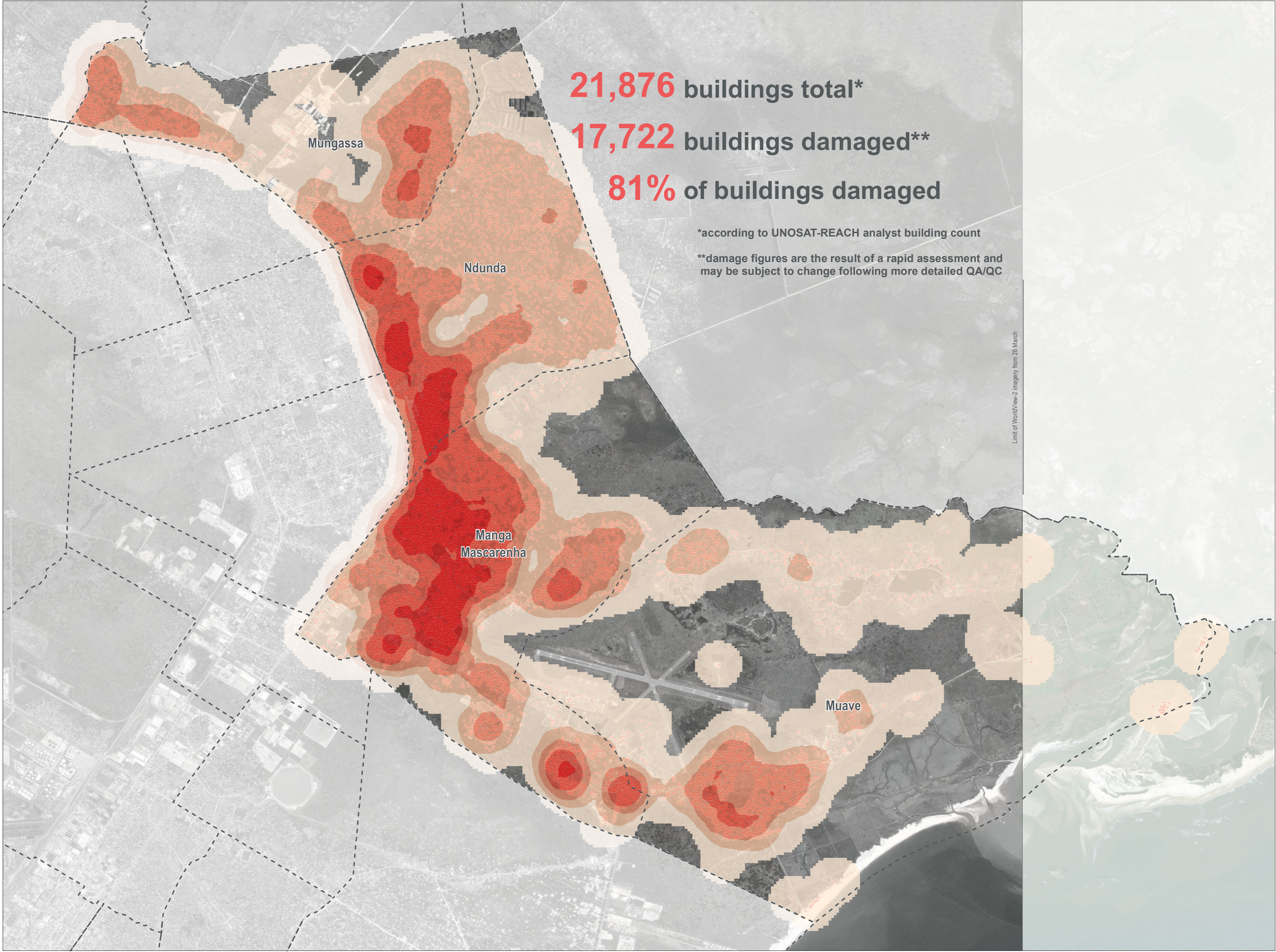


MOZAMBIQUE - Beira City - Manga Loforte Posto

Neighbourhood Damage Assessment - As of 26 March 2019

For Humanitarian Purposes Only
Production date : 5 April 2019



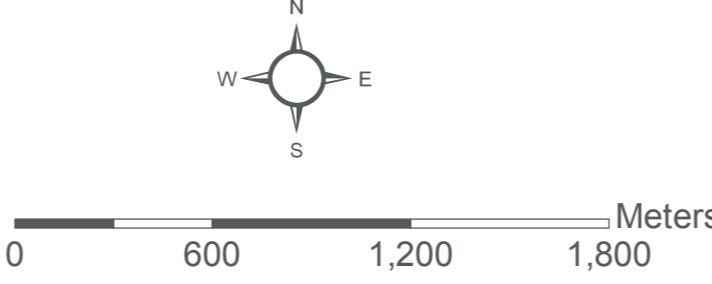
Data sources:
Damage sites - UNOSAT-REACH
Beira Bairros - INGC
Administrative Boundaries (0-3) - OCHA
Satellite Imagery: WorldView-2 from 26 March 2019; GeoEye-1 from 2 July 2016
Copyright: ©DigitalGlobe 2019
Source: US Dept of State Humanitarian Information Unit, NextView License; ESRI

Legend

- Damaged Buildings
- Bairros

Damage Density

- High
- Low



Coordinate System: GCS WGS 1984
File: MOZ_Map_CycloneIdai_MangaLoforte_Damage_5APR2019
Contact: reach.mapping@impact-initiatives.org

Note: Data, designations and boundaries contained on this map are not warranted to be error-free and do not imply acceptance by the REACH partners, associated, donors mentioned on this map.

Funded by



Humanitarian Aid and Civil Protection

An initiative of
IMPACT Initiatives
ACTED and UNOSAT