

The REACH Initiative and IOM, in coordination with the CCCM cluster and in partnership with DRC, FRC, Harikar and UNHCR conducted an initial sweep of collective sites in the KRI and disputed areas of northern Iraq between the 12 and the 25 October 2014. Partners identified, geo-referenced and collected key shelter data on collective sites containing 5 or more families. Subsequent site assessments began on the 1 November 2014, to collect data on demographics, shelter conditions, legal status, access to services and intentions within the 880 identified collective sites.

Assessed sites included informal settlements, collective centers, religious or public buildings and unfinished or abandoned buildings being used as shelters. Most of the sites have substandard services in terms of access, site planning, WASH and winterization; and residents are highly vulnerable to changing weather conditions. Shelter in many sites is ad-hoc, with limited handmade protection provided by plastic sheeting and basic materials sourced by the displaced population.

**85,894**  Individuals

**880**  Assessed sites

### Average Population

**98**  Site

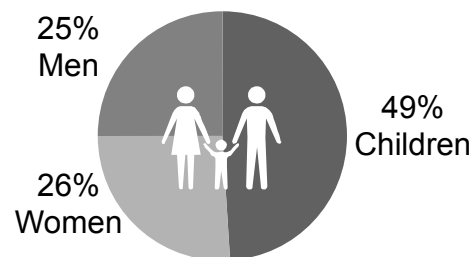
**5**  Household

### Highest Population

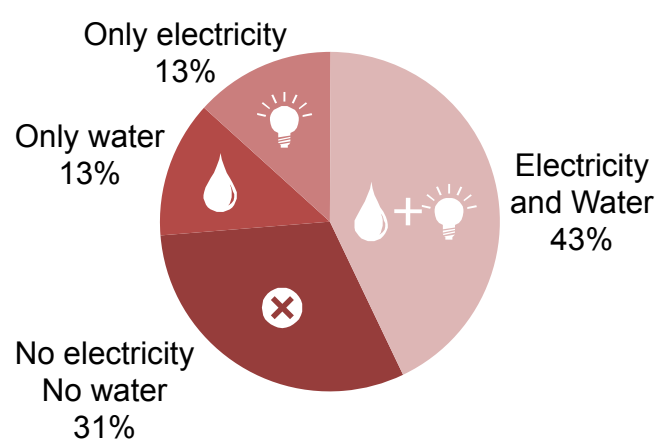
**2492**  Site

**20**  Household

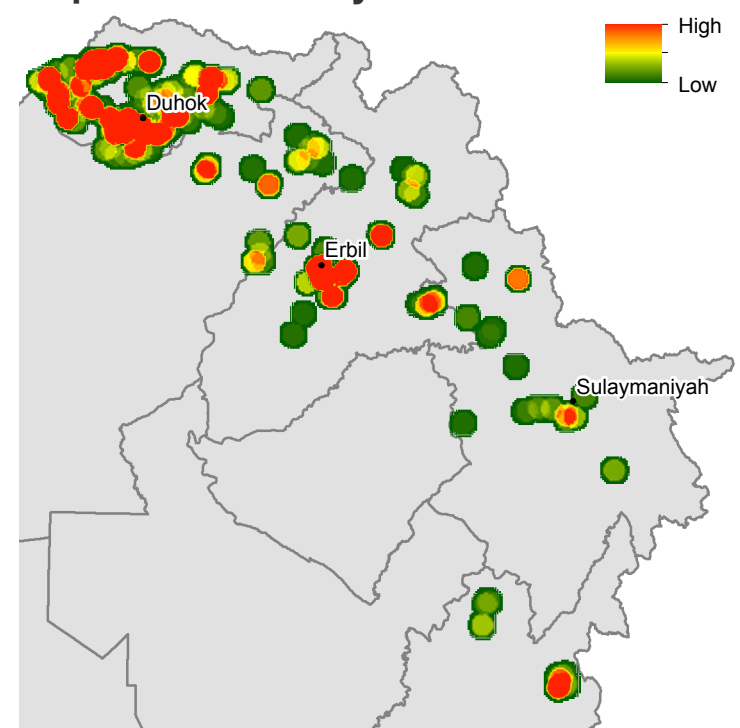
### Population in assessed sites



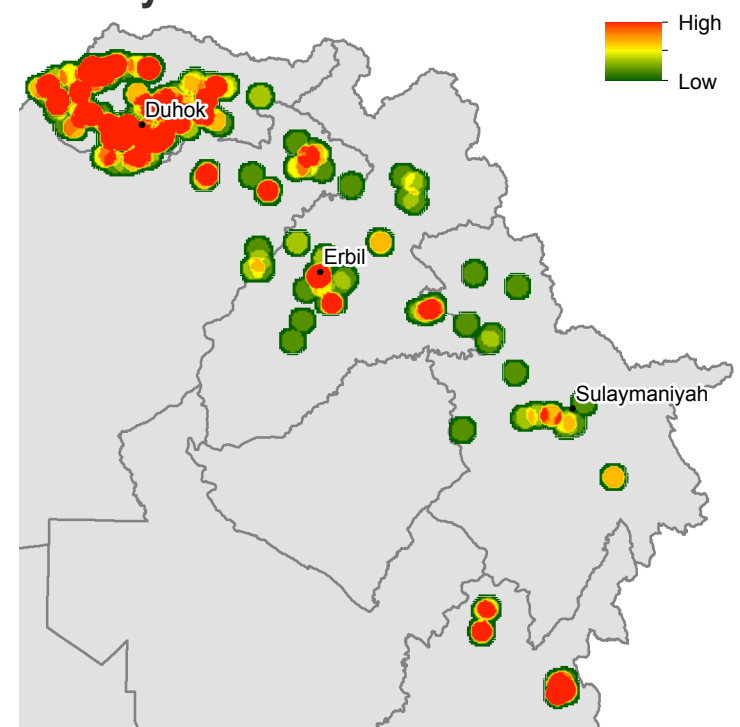
### Population with access to water and electricity



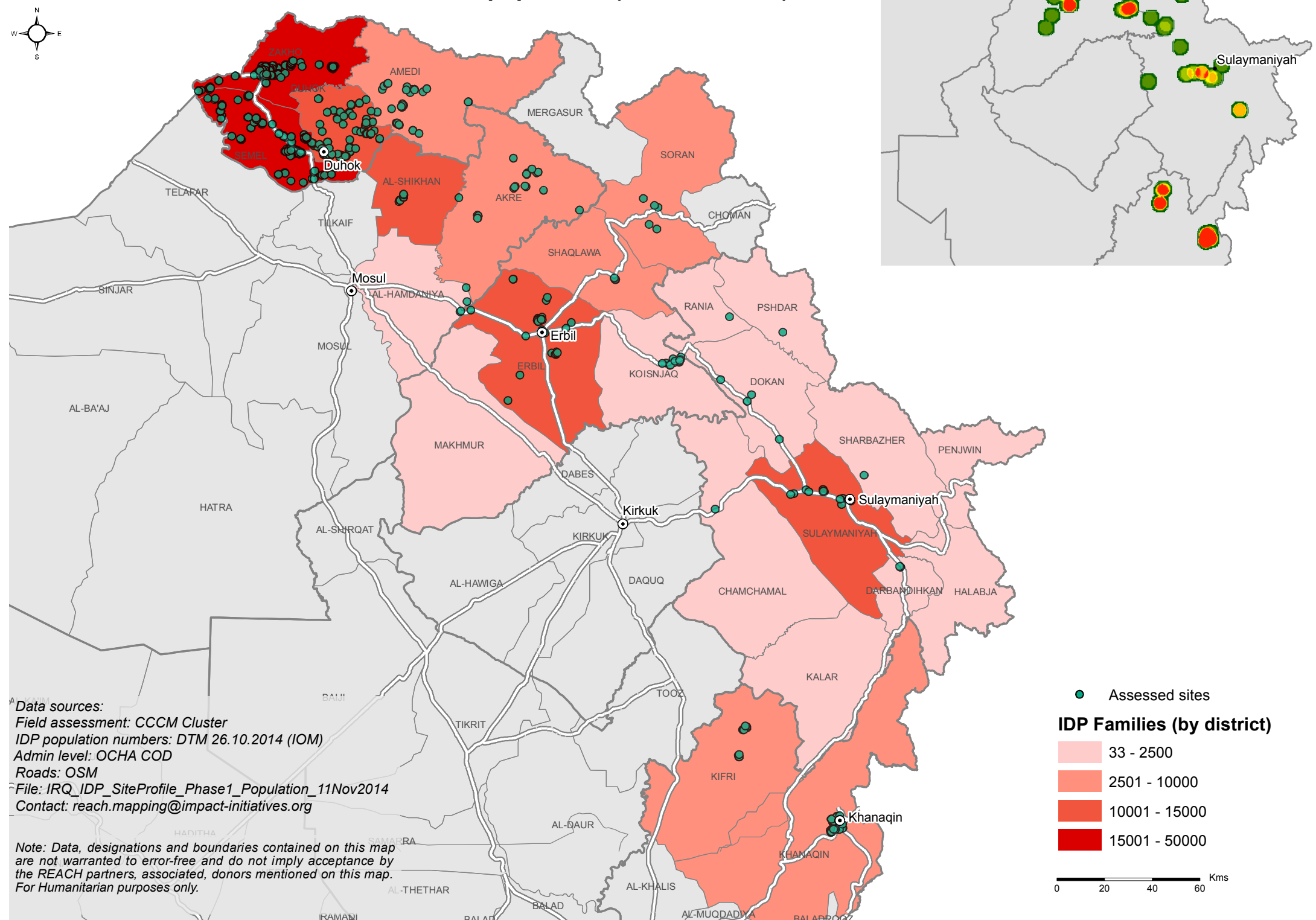
### Population Density



### Density of assessed sites



### Location of assessed sites and overall IDP population (based on DTM)



Data sources:  
Field assessment: CCCM Cluster  
IDP population numbers: DTM 26.10.2014 (IOM)  
Admin level: OCHA COD  
Roads: OSM  
File: IRQ\_IDP\_SiteProfile\_Phase1\_Population\_11Nov2014  
Contact: reach.mapping@impact-initiatives.org

Note: Data, designations and boundaries contained on this map are not warranted to error-free and do not imply acceptance by the REACH partners, associated, donors mentioned on this map. For Humanitarian purposes only.