



Introduction

While an estimated 2.1 million people live in displacement sites in Somalia<sup>1</sup>, existing information on exact locations and site level vulnerabilities is sparse, and existing assessments have been ad-hoc and unharmonised, resulting in low comparability and verification.

The Detailed Site Assessment (DSA) was triggered in coordination with the Camp Coordination and Camp Management (CCCM) Cluster in order to provide the humanitarian community with up-to-date information on location of internally displaced persons (IDP) sites, the conditions and capacity of the sites and the humanitarian needs of the residents.

Target locations for assessment were selected based on needs identified by the CCCM Cluster

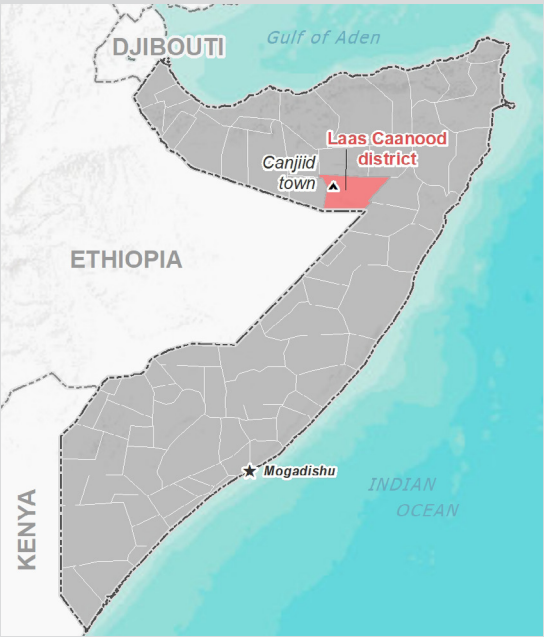
and accessibility for data collection.

A grid pattern approach<sup>2</sup> was applied during data collection to ensure that all IDP sites in the target area were identified. In each site, two key informant (KI) interviews were conducted: one with the site manager or community leader and one with a women's representative to ensure the perspectives of different groups were captured<sup>3</sup>. KI responses were aggregated to give one response per question per site.

This factsheet presents a summary of Farxaskulle Site profile along with the needs and priorities of IDPs residing in the site. As the data is captured through KIs, findings should be considered indicative only.

Date assessed: **Oct - 2017**

Location map



Assessed IDP sites in Laas Caanood

Coordinates: Lat. 8.472, Long. 47.355



1.United Nations High Commissioner for Refugees (UNHCR): Protection & Return Monitoring Network (PRMN), September 2017

2.For each target location, the area was divided into 1km<sup>2</sup> grids. Enumerator teams then visited each grid to verify whether an IDP site was present. By visiting all grids, teams were able to determine the total number of sites in each location.

3.Where KI responses were significantly divergent, these were verified with the respective KIs with a higher reliability accorded to the response provided by the site manager or community leader.







## Site Information

Settlement type	Planned site
Estimated number of individuals	6000
Estimated number of households	1000
Site capacity reached	Yes
Responsible management agency	Local authority
Date when most site residents arrived	Jul-17
Site owner	Private



## Protection

### Number of vulnerable households:

Female-headed households	300
Child-headed households	0
Elderly individuals <sup>4</sup>	500
Unaccompanied children	5
Individuals with a physical disability	12

Presence of shared community space	No
Presence of separate space for women/girls	No
Presence of child friendly space	No
Public lighting in the site	Yes
Type of landownership	Informal
Risk of eviction in next three months	Yes



## WASH

Access to potable water	Yes
<b>Number of latrines in the site:</b>	
Latrines (mixed)	10
Latrines (male)	0
Latrines (female)	0
Access to handwashing facilities	No



## Shelter and Non-Food Items (NFI)

### Most common shelter types in the site<sup>5</sup>:

1. Buul	
2. Tent	
3. Timber and plastic sheet	
Electricity available in the site	No
Access to a NFI market	No
Average walking time to the nearest NFI market	N/A
Perceived safe access to NFI market	N/A



## Displacement

### Estimated number of households per displacement group:

IDPs	900
Host community/ non-displaced	100
IDP households arrived in the past 3 months	50

### Most common areas of origin:

First area of origin	Togdheer
Second area of origin	Sool
Third area of origin	Sanaag



## Food Security

Primary source of food	Market purchase
Food distributions	Twice Daily
Access to a food market	No



## Health and Nutrition

### Most common health issue(s) reported in the site:

1. Malaria
2. N/A
3. N/A

Access to healthcare services	Yes
Average walking time to the nearest health service	10 minutes
Women give birth in the site	Yes
Access to nutrition services	Yes
Average walking time to the nearest nutrition service	15 minutes

**Access to nutrition services:** Yes



## Education

Education services available	Yes
Average walking time to the nearest school	20 minutes

### Education facilities available to residents in the site<sup>5</sup>:

1. Primary
2. N/A
3. N/A



## Communication

### Three most trusted sources of information<sup>5</sup>:

1. Friends, neighbours and family
2. Religious leader
3. Military official

Most commonly spoken language	Somali Standard
-------------------------------	-----------------

4.More than 60 years old.

5.Key informants could select multiple responses.



Introduction

While an estimated 2.1 million people live in displacement sites in Somalia<sup>1</sup>, existing information on exact locations and site level vulnerabilities is sparse, and existing assessments have been ad-hoc and unharmonised, resulting in low comparability and verification.

The Detailed Site Assessment (DSA) was triggered in coordination with the Camp Coordination and Camp Management (CCCM) Cluster in order to provide the humanitarian community with up-to-date information on location of internally displaced persons (IDP) sites, the conditions and capacity of the sites and the humanitarian needs of the residents.

Target locations for assessment were selected based on needs identified by the CCCM Cluster

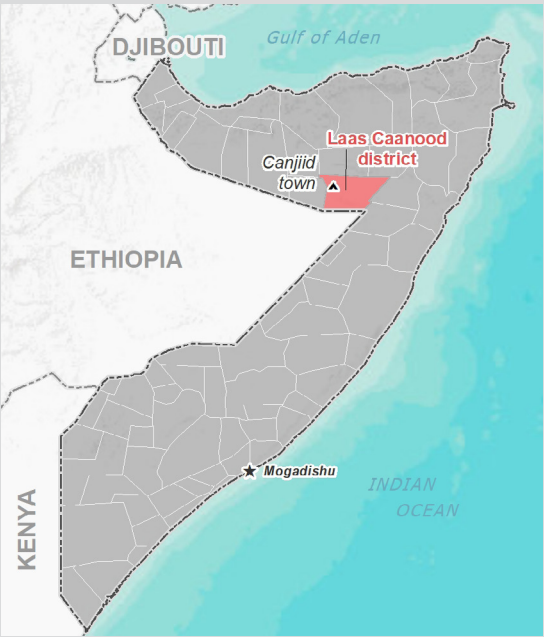
and accessibility for data collection.

A grid pattern approach<sup>2</sup> was applied during data collection to ensure that all IDP sites in the target area were identified. In each site, two key informant (KI) interviews were conducted: one with the site manager or community leader and one with a women's representative to ensure the perspectives of different groups were captured<sup>3</sup>. KI responses were aggregated to give one response per question per site.

This factsheet presents a summary of Hawl Wadaag Site profile along with the needs and priorities of IDPs residing in the site. As the data is captured through KIs, findings should be considered indicative only.

Date assessed: **Oct - 2017**

Location map



Assessed IDP sites in Laas Caanood

Coordinates: Lat. 8.481, Long. 47.371



1.United Nations High Commissioner for Refugees (UNHCR): Protection & Return Monitoring Network (PRMN), September 2017

2.For each target location, the area was divided into 1km<sup>2</sup> grids. Enumerator teams then visited each grid to verify whether an IDP site was present. By visiting all grids, teams were able to determine the total number of sites in each location.

3.Where KI responses were significantly divergent, these were verified with the respective KIs with a higher reliability accorded to the response provided by the site manager or community leader.





## Site Information

Settlement type	Planned site
Estimated number of individuals	3000
Estimated number of households	500
Site capacity reached	Yes
Responsible management agency	Local authority
Date when most site residents arrived	Oct-16
Site owner	Private



## Protection

### Number of vulnerable households:

Female-headed households	300
Child-headed households	0
Elderly individuals <sup>4</sup>	300
Unaccompanied children	3
Individuals with a physical disability	6

Presence of shared community space	No
Presence of separate space for women/girls	Yes
Presence of child friendly space	No
Public lighting in the site	Yes
Type of landownership	Informal
Risk of eviction in next three months	Yes



## WASH

Access to potable water	Yes
<b>Number of latrines in the site:</b>	
Latrines (mixed)	20
Latrines (male)	0
Latrines (female)	0
Access to handwashing facilities	No



## Shelter and Non-Food Items (NFI)

### Most common shelter types in the site<sup>5</sup>:

1. Buul
2. Brick
3. N/A

Electricity available in the site	Yes
Access to a NFI market	No
Average walking time to the nearest NFI market	N/A
Perceived safe access to NFI market	N/A



## Displacement

### Estimated number of households per displacement group:

IDPs	450
Host community/ non-displaced	50
IDP households arrived in the past 3 months	100

### Most common areas of origin:

First area of origin	Sool
Second area of origin	Mudug
Third area of origin	Sanaag



## Food Security

Primary source of food	Market purchase
Food distributions	Monthly
Access to a food market	Yes



## Health and Nutrition

### Most common health issue(s) reported in the site:

1. Malaria
2. N/A
3. N/A

Access to healthcare services	Yes
Average walking time to the nearest health service	10 minutes
Women give birth in the site	Yes
Access to nutrition services	Yes
Average walking time to the nearest nutrition service	10 minutes

**Access to nutrition services:** Yes



## Education

Education services available	Yes
Average walking time to the nearest school	20 minutes

### Education facilities available to residents in the site<sup>5</sup>:

1. Primary
2. Secondary
3. N/A



## Communication

### Three most trusted sources of information<sup>5</sup>:

1. Friends, neighbours and family
2. Radio
3. N/A

Most commonly spoken language	Somali Standard
-------------------------------	-----------------

4.More than 60 years old.

5.Key informants could select multiple responses.



Introduction

While an estimated 2.1 million people live in displacement sites in Somalia<sup>1</sup>, existing information on exact locations and site level vulnerabilities is sparse, and existing assessments have been ad-hoc and unharmonised, resulting in low comparability and verification.

The Detailed Site Assessment (DSA) was triggered in coordination with the Camp Coordination and Camp Management (CCCM) Cluster in order to provide the humanitarian community with up-to-date information on location of internally displaced persons (IDP) sites, the conditions and capacity of the sites and the humanitarian needs of the residents.

Target locations for assessment were selected based on needs identified by the CCCM Cluster

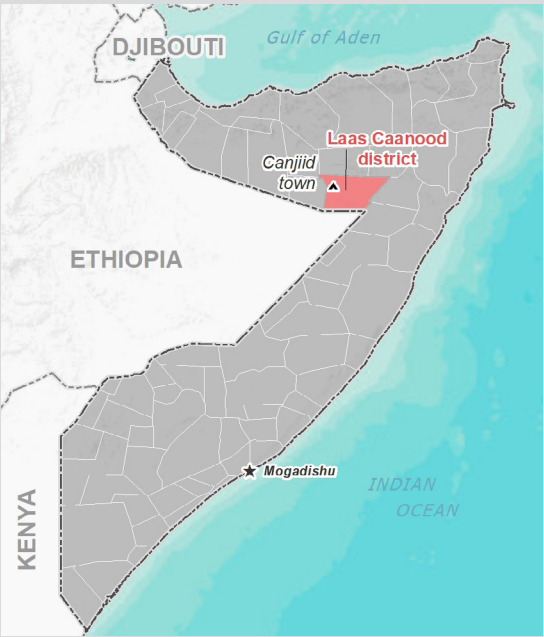
and accessibility for data collection.

A grid pattern approach<sup>2</sup> was applied during data collection to ensure that all IDP sites in the target area were identified. In each site, two key informant (KI) interviews were conducted: one with the site manager or community leader and one with a women's representative to ensure the perspectives of different groups were captured<sup>3</sup>. KI responses were aggregated to give one response per question per site.

This factsheet presents a summary of Kalbadaaley Site profile along with the needs and priorities of IDPs residing in the site. As the data is captured through KIs, findings should be considered indicative only.

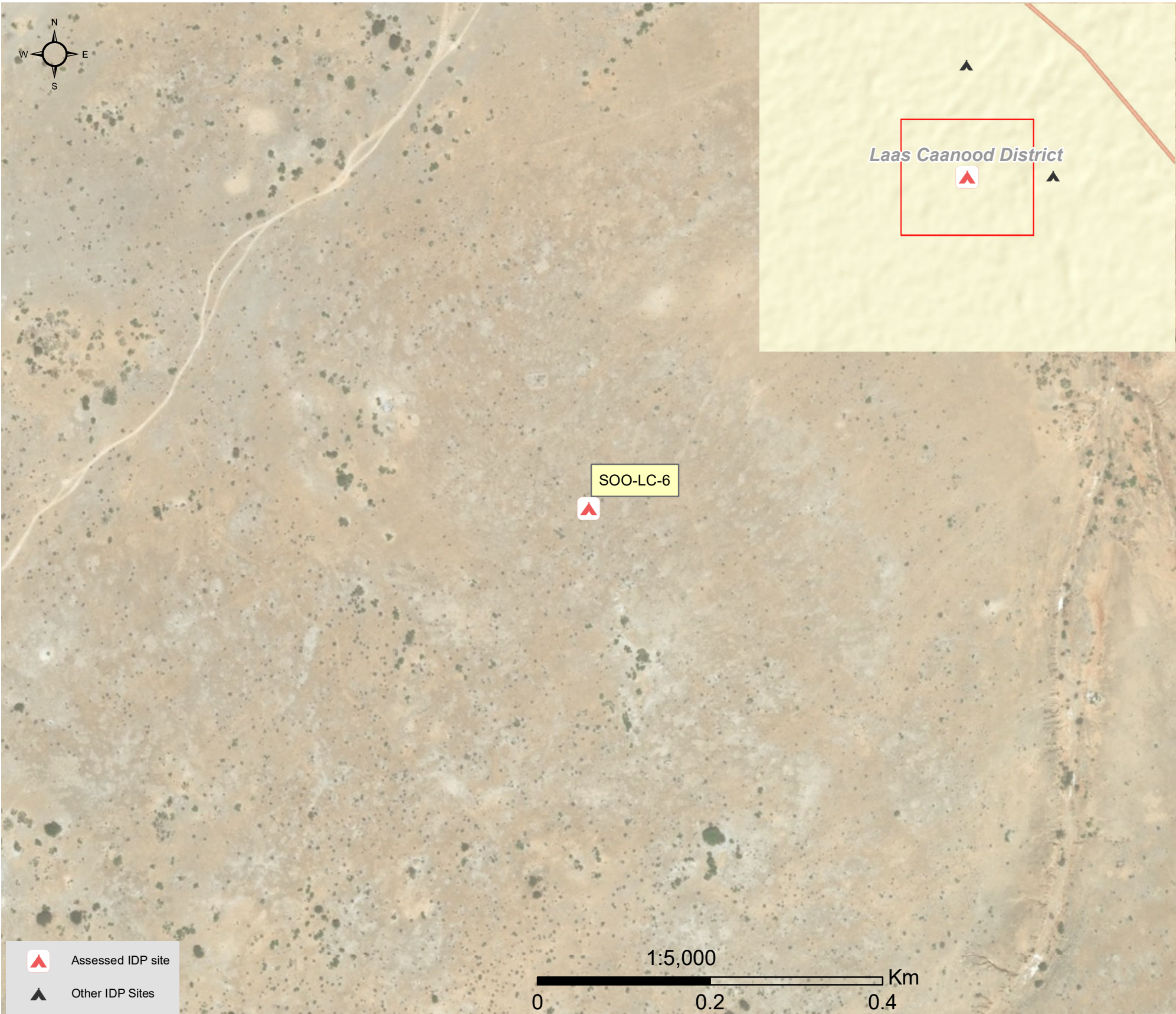
Date assessed: **Oct - 2017**

Location map



Assessed IDP sites in Laas Caanood

Coordinates: Lat. 8.665, Long. 47.143



1.United Nations High Commissioner for Refugees (UNHCR): Protection & Return Monitoring Network (PRMN), September 2017

2.For each target location, the area was divided into 1km² grids. Enumerator teams then visited each grid to verify whether an IDP site was present. By visiting all grids, teams were able to determine the total number of sites in each location.

3.Where KI responses were significantly divergent, these were verified with the respective KIs with a higher reliability accorded to the response provided by the site manager or community leader.





## Site Information

Settlement type	Spontaneous site
Estimated number of individuals	6000
Estimated number of households	1000
Site capacity reached	No
Responsible management agency	Residents
Date when most site residents arrived	Jul-16
Site owner	None



## Protection

### Number of vulnerable households:

Female-headed households	20
Child-headed households	0
Elderly individuals <sup>4</sup>	100
Unaccompanied children	15
Individuals with a physical disability	15

Presence of shared community space	No
Presence of separate space for women/girls	No
Presence of child friendly space	No
Public lighting in the site	No
Type of landownership	N/A
Risk of eviction in next three months	No



## WASH

Access to potable water	No
<b>Number of latrines in the site:</b>	
Latrines (mixed)	0
Latrines (male)	0
Latrines (female)	0
Access to handwashing facilities	N/A



## Shelter and Non-Food Items (NFI)

### Most common shelter types in the site<sup>5</sup>:

1. Buul	
2. N/A	
3. N/A	
Electricity available in the site	No
Access to a NFI market	No
Average walking time to the nearest NFI market	N/A
Perceived safe access to NFI market	N/A



## Displacement

### Estimated number of households per displacement group:

IDPs	1000
Host community/ non-displaced	0
IDP households arrived in the past 3 months	20

### Most common areas of origin:

First area of origin	Sool
Second area of origin	Nugaal
Third area of origin	N/A



## Food Security

Primary source of food	Market purchase
Food distributions	Less than montly
Access to a food market	No



## Health and Nutrition

### Most common health issue(s) reported in the site:

1. Malaria
2. N/A
3. N/A

Access to healthcare services	No
Average walking time to the nearest health service	N/A
Women give birth in the site	Yes
Access to nutrition services	No
Average walking time to the nearest nutrition service	N/A

**Access to nutrition services:** No



## Education

Education services available	Yes
Average walking time to the nearest school	10 minutes

### Education facilities available to residents in the site<sup>5</sup>:

1. Quranic
2. N/A
3. N/A



## Communication

### Three most trusted sources of information<sup>5</sup>:

1. Religious leader
2. Community leader
3. Radio

Most commonly spoken language	Somali Standard
-------------------------------	-----------------

4.More than 60 years old.

5.Key informants could select multiple responses.



Introduction

While an estimated 2.1 million people live in displacement sites in Somalia<sup>1</sup>, existing information on exact locations and site level vulnerabilities is sparse, and existing assessments have been ad-hoc and unharmonised, resulting in low comparability and verification.

The Detailed Site Assessment (DSA) was triggered in coordination with the Camp Coordination and Camp Management (CCCM) Cluster in order to provide the humanitarian community with up-to-date information on location of internally displaced persons (IDP) sites, the conditions and capacity of the sites and the humanitarian needs of the residents.

Target locations for assessment were selected based on needs identified by the CCCM Cluster

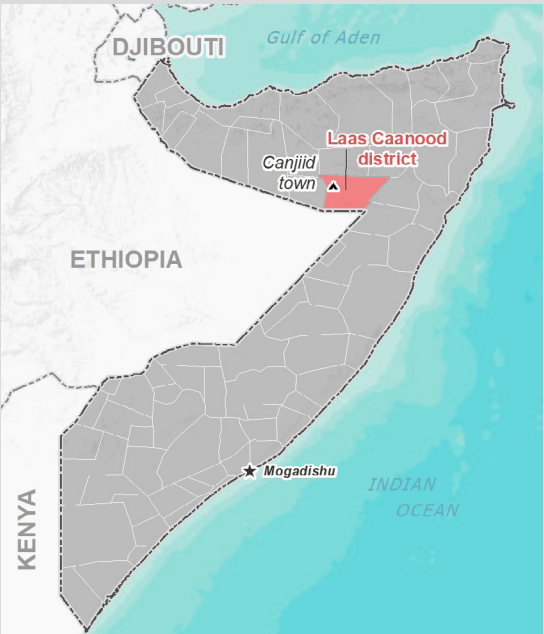
and accessibility for data collection.

A grid pattern approach<sup>2</sup> was applied during data collection to ensure that all IDP sites in the target area were identified. In each site, two key informant (KI) interviews were conducted: one with the site manager or community leader and one with a women's representative to ensure the perspectives of different groups were captured<sup>3</sup>. KI responses were aggregated to give one response per question per site.

This factsheet presents a summary of Samalay Site profile along with the needs and priorities of IDPs residing in the site. As the data is captured through KIs, findings should be considered indicative only.

Date assessed: **Oct - 2017**

Location map



Assessed IDP sites in Laas Caanood

Coordinates: Lat. 8.464, Long. 47.363



1.United Nations High Commissioner for Refugees (UNHCR): Protection & Return Monitoring Network (PRMN), September 2017

2.For each target location, the area was divided into 1km² grids. Enumerator teams then visited each grid to verify whether an IDP site was present. By visiting all grids, teams were able to determine the total number of sites in each location.

3.Where KI responses were significantly divergent, these were verified with the respective KIs with a higher reliability accorded to the response provided by the site manager or community leader.





## Site Information

Settlement type	Spontaneous site
Estimated number of individuals	4800
Estimated number of households	800
Site capacity reached	No
Responsible management agency	Local authority
Date when most site residents arrived	Jan-17
Site owner	Local authority



## Protection

### Number of vulnerable households:

Female-headed households	250
Child-headed households	9
Elderly individuals <sup>4</sup>	590
Unaccompanied children	6
Individuals with a physical disability	8

Presence of shared community space	Yes
Presence of separate space for women/girls	No
Presence of child friendly space	No
Public lighting in the site	Yes
Type of landownership	Informal
Risk of eviction in next three months	No



## WASH

Access to potable water	Yes
<b>Number of latrines in the site:</b>	
Latrines (mixed)	0
Latrines (male)	40
Latrines (female)	0
Access to handwashing facilities	No



## Shelter and Non-Food Items (NFI)

### Most common shelter types in the site<sup>5</sup>:

1. Buul	
2. Timber and plastic sheet	
3. Reinforced concrete	
Electricity available in the site	Yes
Access to a NFI market	Yes
Average walking time to the nearest NFI market	60 minutes
Perceived safe access to NFI market	Yes



## Displacement

### Estimated number of households per displacement group:

IDPs	800
Host community/ non-displaced	0
IDP households arrived in the past 3 months	800

### Most common areas of origin:

First area of origin	Sool
Second area of origin	Nugaal
Third area of origin	Sanaag



## Food Security

Primary source of food	Market purchase
Food distributions	Less than montly
Access to a food market	Yes



## Health and Nutrition

### Most common health issue(s) reported in the site:

1. AWD / Cholera
2. N/A
3. N/A

Access to healthcare services	Yes
Average walking time to the nearest health service	15 minutes
Women give birth in the site	Yes
Access to nutrition services	No
Average walking time to the nearest nutrition service	N/A

**Access to nutrition services: No**



## Education

Education services available	Yes
Average walking time to the nearest school	15 minutes

### Education facilities available to residents in the site<sup>5</sup>:

1. Primary
2. N/A
3. N/A



## Communication

### Three most trusted sources of information<sup>5</sup>:

1. Friends, neighbours and family
2. TV
3. N/A

Most commonly spoken language	Somali Standard
-------------------------------	-----------------

4.More than 60 years old.

5.Key informants could select multiple responses.



Introduction

While an estimated 2.1 million people live in displacement sites in Somalia<sup>1</sup>, existing information on exact locations and site level vulnerabilities is sparse, and existing assessments have been ad-hoc and unharmonised, resulting in low comparability and verification.

The Detailed Site Assessment (DSA) was triggered in coordination with the Camp Coordination and Camp Management (CCCM) Cluster in order to provide the humanitarian community with up-to-date information on location of internally displaced persons (IDP) sites, the conditions and capacity of the sites and the humanitarian needs of the residents.

Target locations for assessment were selected based on needs identified by the CCCM Cluster

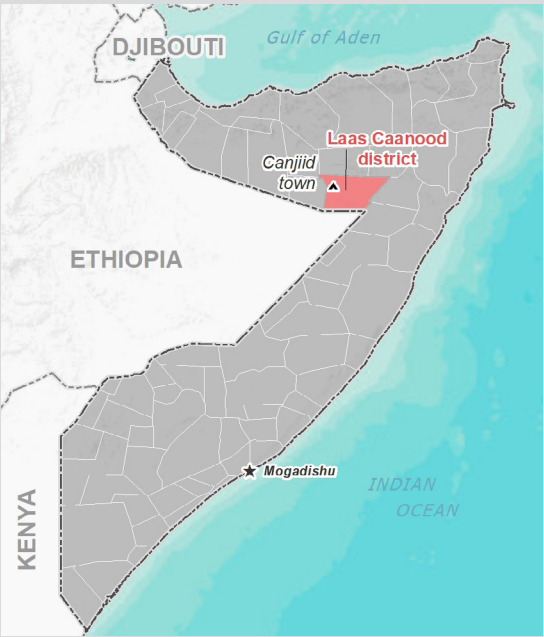
and accessibility for data collection.

A grid pattern approach<sup>2</sup> was applied during data collection to ensure that all IDP sites in the target area were identified. In each site, two key informant (KI) interviews were conducted: one with the site manager or community leader and one with a women's representative to ensure the perspectives of different groups were captured<sup>3</sup>. KI responses were aggregated to give one response per question per site.

This factsheet presents a summary of Siixowle Site profile along with the needs and priorities of IDPs residing in the site. As the data is captured through KIs, findings should be considered indicative only.

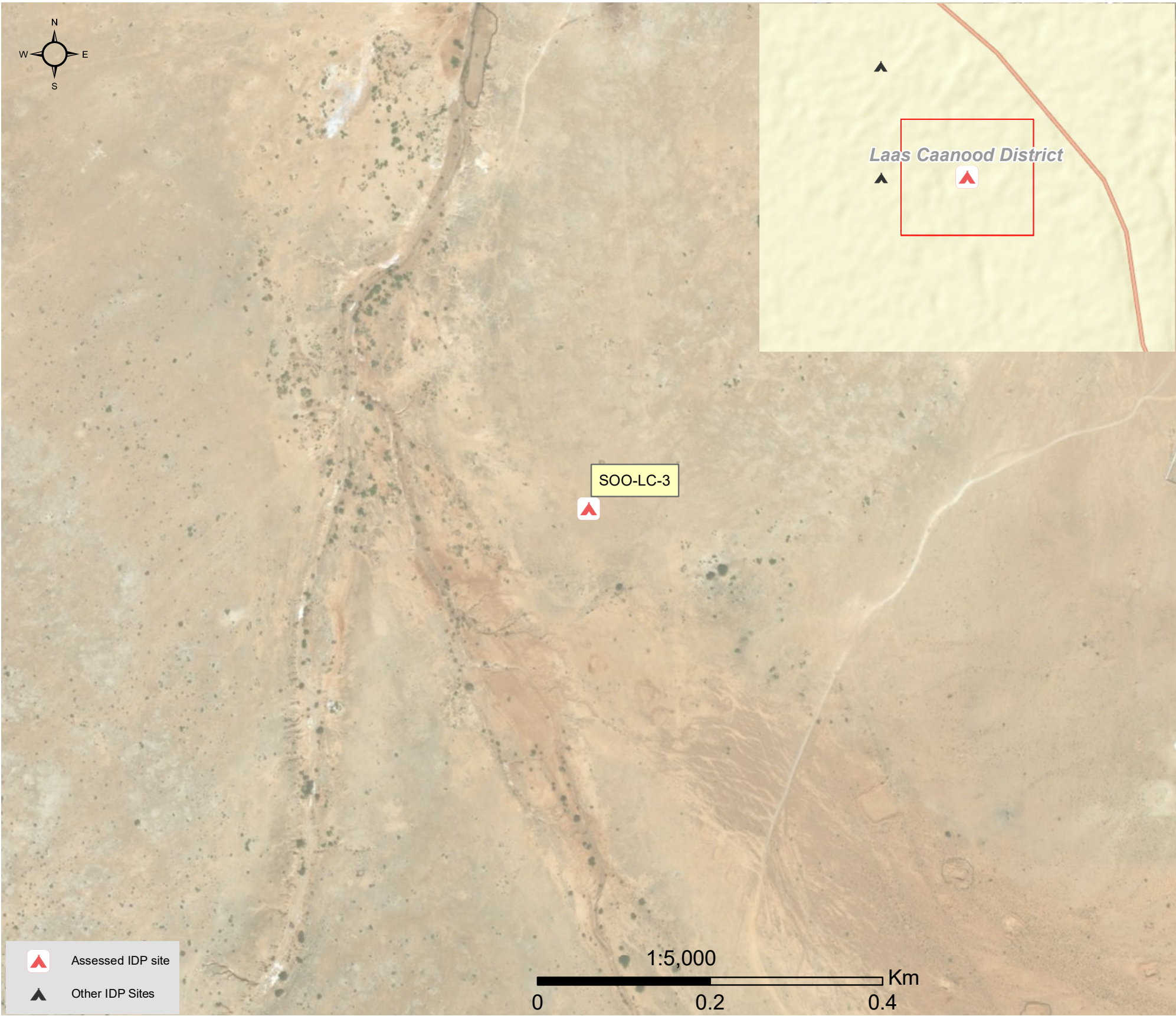
Date assessed: **Oct - 2017**

Location map



Assessed IDP sites in Laas Caanood

Coordinates: Lat. 8.666, Long. 47.151



1.United Nations High Commissioner for Refugees (UNHCR): Protection & Return Monitoring Network (PRMN), September 2017

2.For each target location, the area was divided into 1km<sup>2</sup> grids. Enumerator teams then visited each grid to verify whether an IDP site was present. By visiting all grids, teams were able to determine the total number of sites in each location.

3.Where KI responses were significantly divergent, these were verified with the respective KIs with a higher reliability accorded to the response provided by the site manager or community leader.





## Site Information

Settlement type	Planned site
Estimated number of individuals	1800
Estimated number of households	300
Site capacity reached	No
Responsible management agency	Residents
Date when most site residents arrived	Jul-16
Site owner	None



## Protection

<b>Number of vulnerable households:</b>	
Female-headed households	50
Child-headed households	5
Elderly individuals <sup>4</sup>	100
Unaccompanied children	0
Individuals with a physical disability	6
Presence of shared community space	No
Presence of separate space for women/girls	No
Presence of child friendly space	No
Public lighting in the site	Yes
Type of landownership	N/A
Risk of eviction in next three months	No



## WASH

Access to potable water	No
<b>Number of latrines in the site:</b>	
Latrines (mixed)	0
Latrines (male)	0
Latrines (female)	0
Access to handwashing facilities	N/A



## Shelter and Non-Food Items (NFI)

<b>Most common shelter types in the site<sup>5</sup>:</b>	
1. Buul	
2. N/A	
3. N/A	
Electricity available in the site	No
Access to a NFI market	No
Average walking time to the nearest NFI market	N/A
Perceived safe access to NFI market	N/A



## Displacement

<b>Estimated number of households per displacement group:</b>	
IDPs	300
Host community/ non-displaced	0
IDP households arrived in the past 3 months	10
<b>Most common areas of origin:</b>	
First area of origin	Sool
Second area of origin	N/A
Third area of origin	N/A



## Food Security

Primary source of food	Market purchase
Food distributions	Less than montly
Access to a food market	No



## Health and Nutrition

<b>Most common health issue(s) reported in the site:</b>	
1. None	
2. N/A	
3. N/A	
Access to healthcare services	No
Average walking time to the nearest health service	N/A
Women give birth in the site	Yes
Access to nutrition services	No
Average walking time to the nearest nutrition service	N/A
<b>Access to nutrition services:</b>	<b>No</b>



## Education

Education services available	No
Average walking time to the nearest school	N/A
<b>Education facilities available to residents in the site<sup>5</sup>:</b>	
1. N/A	
2. N/A	
3. N/A	



## Communication

<b>Three most trusted sources of information<sup>5</sup>:</b>	
1. Community leader	
2. N/A	
3. N/A	
Most commonly spoken language	Somali Standard

4.More than 60 years old.

5.Key informants could select multiple responses.





Introduction

While an estimated 2.1 million people live in displacement sites in Somalia<sup>1</sup>, existing information on exact locations and site level vulnerabilities is sparse, and existing assessments have been ad-hoc and unharmonised, resulting in low comparability and verification.

The Detailed Site Assessment (DSA) was triggered in coordination with the Camp Coordination and Camp Management (CCCM) Cluster in order to provide the humanitarian community with up-to-date information on location of internally displaced persons (IDP) sites, the conditions and capacity of the sites and the humanitarian needs of the residents.

Target locations for assessment were selected based on needs identified by the CCCM Cluster

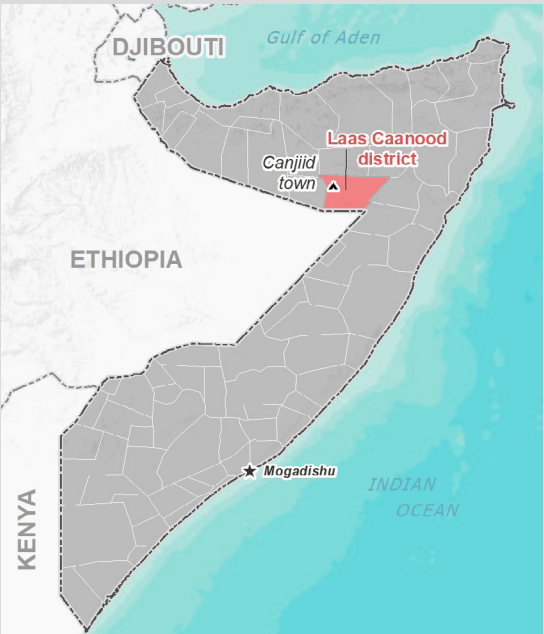
and accessibility for data collection.

A grid pattern approach<sup>2</sup> was applied during data collection to ensure that all IDP sites in the target area were identified. In each site, two key informant (KI) interviews were conducted: one with the site manager or community leader and one with a women's representative to ensure the perspectives of different groups were captured<sup>3</sup>. KI responses were aggregated to give one response per question per site.

This factsheet presents a summary of Daami Site profile along with the needs and priorities of IDPs residing in the site. As the data is captured through KIs, findings should be considered indicative only.

Date assessed: **Oct - 2017**

Location map



Assessed IDP sites in Laas Caanood

Coordinates: Lat. 8.472, Long. 47.363



1.United Nations High Commissioner for Refugees (UNHCR): Protection & Return Monitoring Network (PRMN), September 2017

2.For each target location, the area was divided into 1km<sup>2</sup> grids. Enumerator teams then visited each grid to verify whether an IDP site was present. By visiting all grids, teams were able to determine the total number of sites in each location.

3.Where KI responses were significantly divergent, these were verified with the respective KIs with a higher reliability accorded to the response provided by the site manager or community leader.





Site Information

Settlement type	Spontaneous site
Estimated number of individuals	270
Estimated number of households	45
Site capacity reached	Yes
Responsible management agency	No management
Date when most site residents arrived	Mar-17
Site owner	Local authority



Protection

Number of vulnerable households:	
Female-headed households	6
Child-headed households	0
Elderly individuals <sup>4</sup>	20
Unaccompanied children	2
Individuals with a physical disability	6
Presence of shared community space	Yes
Presence of separate space for women/girls	Yes
Presence of child friendly space	No
Public lighting in the site	Yes
Type of landownership	Informal
Risk of eviction in next three months	Yes



WASH

Access to potable water	Yes
Number of latrines in the site:	
Latrines (mixed)	6
Latrines (male)	0
Latrines (female)	0
Access to handwashing facilities	Yes



Shelter and Non-Food Items (NFI)

Most common shelter types in the site <sup>5</sup> :	
1. Buul	
2. CGI	
3. N/A	
Electricity available in the site	Yes
Access to a NFI market	Yes
Average walking time to the nearest NFI market	15 minutes
Perceived safe access to NFI market	Yes



Displacement

Estimated number of households per displacement group:	
IDPs	45
Host community/ non-displaced	0
IDP households arrived in the past 3 months	15
Most common areas of origin:	
First area of origin	Sool
Second area of origin	Nugaal
Third area of origin	N/A



Food Security

Primary source of food	Market purchase
Food distributions	None
Access to a food market	Yes



Health and Nutrition

Most common health issue(s) reported in the site:	
1. Malaria	
2. N/A	
3. N/A	
Access to healthcare services	Yes
Average walking time to the nearest health service	15 minutes
Women give birth in the site	Yes
Access to nutrition services	Yes
Average walking time to the nearest nutrition service	5 minutes
Access to nutrition services:	Yes



Education

Education services available	Yes
Average walking time to the nearest school	10 minutes
Education facilities available to residents in the site <sup>5</sup> :	
1. Primary	
2. Secondary	
3. Quranic	



Communication

Three most trusted sources of information <sup>5</sup> :	
1. Religious leader	
2. Community leader	
3. N/A	
Most commonly spoken language	Somali Standard

4.More than 60 years old.

5.Key informants could select multiple responses.





Introduction

While an estimated 2.1 million people live in displacement sites in Somalia<sup>1</sup>, existing information on exact locations and site level vulnerabilities is sparse, and existing assessments have been ad-hoc and unharmonised, resulting in low comparability and verification.

The Detailed Site Assessment (DSA) was triggered in coordination with the Camp Coordination and Camp Management (CCCM) Cluster in order to provide the humanitarian community with up-to-date information on location of internally displaced persons (IDP) sites, the conditions and capacity of the sites and the humanitarian needs of the residents.

Target locations for assessment were selected based on needs identified by the CCCM Cluster

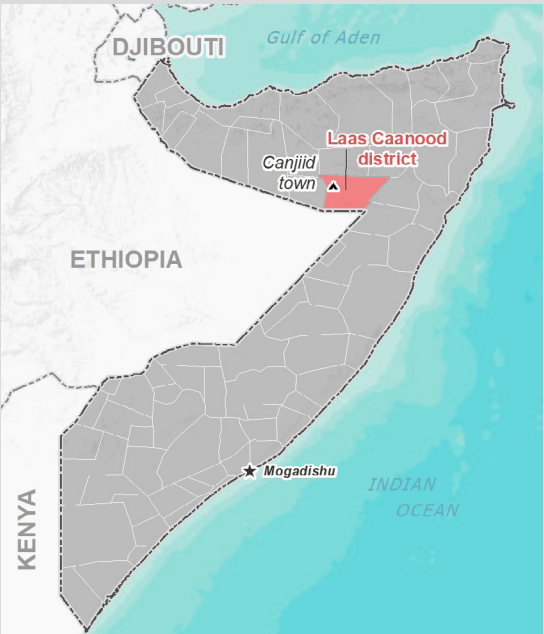
and accessibility for data collection.

A grid pattern approach<sup>2</sup> was applied during data collection to ensure that all IDP sites in the target area were identified. In each site, two key informant (KI) interviews were conducted: one with the site manager or community leader and one with a women's representative to ensure the perspectives of different groups were captured<sup>3</sup>. KI responses were aggregated to give one response per question per site.

This factsheet presents a summary of Cusbitaal Site profile along with the needs and priorities of IDPs residing in the site. As the data is captured through KIs, findings should be considered indicative only.

Date assessed: **Oct - 2017**

Location map



Assessed IDP sites in Laas Caanood

Coordinates: Lat. 8.484, Long. 47.354



1.United Nations High Commissioner for Refugees (UNHCR): Protection & Return Monitoring Network (PRMN), September 2017

2.For each target location, the area was divided into 1km<sup>2</sup> grids. Enumerator teams then visited each grid to verify whether an IDP site was present. By visiting all grids, teams were able to determine the total number of sites in each location.

3.Where KI responses were significantly divergent, these were verified with the respective KIs with a higher reliability accorded to the response provided by the site manager or community leader.





## Site Information

Settlement type	Spontaneous site
Estimated number of individuals	5550
Estimated number of households	1000
Site capacity reached	No
Responsible management agency	Local authority
Date when most site residents arrived	Apr-17
Site owner	Local authority



## Protection

<b>Number of vulnerable households:</b>	
Female-headed households	50
Child-headed households	2
Elderly individuals <sup>4</sup>	870
Unaccompanied children	2
Individuals with a physical disability	8
Presence of shared community space	No
Presence of separate space for women/girls	No
Presence of child friendly space	No
Public lighting in the site	Yes
Type of landownership	None
Risk of eviction in next three months	No



## WASH

Access to potable water	No
<b>Number of latrines in the site:</b>	
Latrines (mixed)	0
Latrines (male)	35
Latrines (female)	0
Access to handwashing facilities	No



## Shelter and Non-Food Items (NFI)

<b>Most common shelter types in the site<sup>5</sup>:</b>	
1. Wattle and daub	
2. Other	
3. Brick	
Electricity available in the site	Yes
Access to a NFI market	No
Average walking time to the nearest NFI market	N/A
Perceived safe access to NFI market	N/A



## Displacement

<b>Estimated number of households per displacement group:</b>	
IDPs	1000
Host community/ non-displaced	0
IDP households arrived in the past 3 months	200
<b>Most common areas of origin:</b>	
First area of origin	Sool
Second area of origin	Sanaag
Third area of origin	Nugaal



## Food Security

Primary source of food	Market purchase
Food distributions	None
Access to a food market	No



## Health and Nutrition

<b>Most common health issue(s) reported in the site:</b>	
1. Malaria	
2. N/A	
3. N/A	
Access to healthcare services	Yes
Average walking time to the nearest health service	5 minutes
Women give birth in the site	No
Access to nutrition services	No
Average walking time to the nearest nutrition service	N/A
<b>Access to nutrition services:</b>	<b>No</b>



## Education

Education services available	Yes
Average walking time to the nearest school	20 minutes
<b>Education facilities available to residents in the site<sup>5</sup>:</b>	
1. Primary	
2. N/A	
3. N/A	



## Communication

<b>Three most trusted sources of information<sup>5</sup>:</b>	
1. Friends, neighbours and family	
2. TV	
3. N/A	
Most commonly spoken language	Somali Standard

4.More than 60 years old.

5.Key informants could select multiple responses.



Introduction

While an estimated 2.1 million people live in displacement sites in Somalia<sup>1</sup>, existing information on exact locations and site level vulnerabilities is sparse, and existing assessments have been ad-hoc and unharmonised, resulting in low comparability and verification.

The Detailed Site Assessment (DSA) was triggered in coordination with the Camp Coordination and Camp Management (CCCM) Cluster in order to provide the humanitarian community with up-to-date information on location of internally displaced persons (IDP) sites, the conditions and capacity of the sites and the humanitarian needs of the residents.

Target locations for assessment were selected based on needs identified by the CCCM Cluster

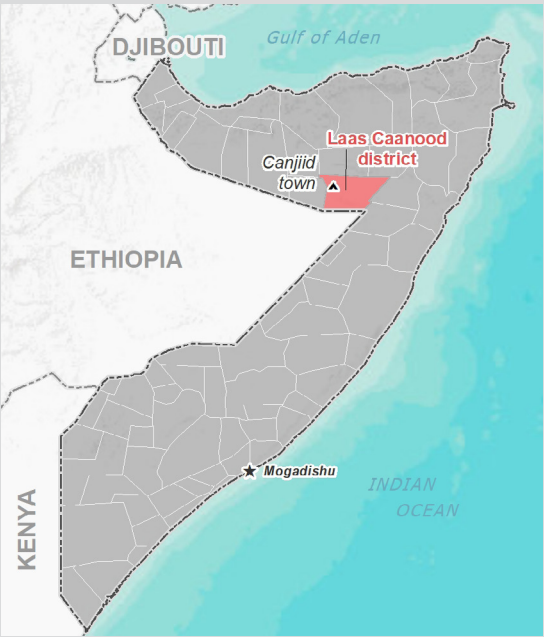
and accessibility for data collection.

A grid pattern approach<sup>2</sup> was applied during data collection to ensure that all IDP sites in the target area were identified. In each site, two key informant (KI) interviews were conducted: one with the site manager or community leader and one with a women's representative to ensure the perspectives of different groups were captured<sup>3</sup>. KI responses were aggregated to give one response per question per site.

This factsheet presents a summary of Farxaskule Site profile along with the needs and priorities of IDPs residing in the site. As the data is captured through KIs, findings should be considered indicative only.

Date assessed: **Oct - 2017**

Location map



Assessed IDP sites in Laas Caanood

Coordinates: Lat. 8.463, Long. 47.345



1.United Nations High Commissioner for Refugees (UNHCR): Protection & Return Monitoring Network (PRMN), September 2017

2.For each target location, the area was divided into 1km<sup>2</sup> grids. Enumerator teams then visited each grid to verify whether an IDP site was present. By visiting all grids, teams were able to determine the total number of sites in each location.

3.Where KI responses were significantly divergent, these were verified with the respective KIs with a higher reliability accorded to the response provided by the site manager or community leader.





## Site Information

Settlement type	Spontaneous site
Estimated number of individuals	25200
Estimated number of households	4200
Site capacity reached	Yes
Responsible management agency	Local authority
Date when most site residents arrived	Feb-17
Site owner	Local authority



## Protection

### Number of vulnerable households:

Female-headed households	1500
Child-headed households	52
Elderly individuals <sup>4</sup>	750
Unaccompanied children	120
Individuals with a physical disability	51

Presence of shared community space	No
Presence of separate space for women/girls	No
Presence of child friendly space	No
Public lighting in the site	No
Type of landownership	Informal
Risk of eviction in next three months	No



## WASH

Access to potable water	No
<b>Number of latrines in the site:</b>	
Latrines (mixed)	0
Latrines (male)	40
Latrines (female)	0
Access to handwashing facilities	No



## Shelter and Non-Food Items (NFI)

### Most common shelter types in the site<sup>5</sup>:

1. Buul	
2. Tent	
3. Timber and plastic sheet	
Electricity available in the site	Yes
Access to a NFI market	No
Average walking time to the nearest NFI market	N/A
Perceived safe access to NFI market	N/A



## Displacement

### Estimated number of households per displacement group:

IDPs	4000
Host community/ non-displaced	200
IDP households arrived in the past 3 months	1200

### Most common areas of origin:

First area of origin	Sool
Second area of origin	Sanaag
Third area of origin	Nugaal



## Food Security

Primary source of food	Market purchase
Food distributions	None
Access to a food market	No



## Health and Nutrition

### Most common health issue(s) reported in the site:

1. AWD / Cholera
2. Malaria
3. N/A

Access to healthcare services	No
Average walking time to the nearest health service	N/A
Women give birth in the site	No
Access to nutrition services	No
Average walking time to the nearest nutrition service	N/A

**Access to nutrition services: No**



## Education

Education services available	Yes
Average walking time to the nearest school	25 minutes

### Education facilities available to residents in the site<sup>5</sup>:

1. Primary
2. N/A
3. N/A



## Communication

### Three most trusted sources of information<sup>5</sup>:

1. Friends, neighbours and family
2. N/A
3. N/A

Most commonly spoken language	Somali Standard
-------------------------------	-----------------

4.More than 60 years old.

5.Key informants could select multiple responses.



Introduction

While an estimated 2.1 million people live in displacement sites in Somalia<sup>1</sup>, existing information on exact locations and site level vulnerabilities is sparse, and existing assessments have been ad-hoc and unharmonised, resulting in low comparability and verification.

The Detailed Site Assessment (DSA) was triggered in coordination with the Camp Coordination and Camp Management (CCCM) Cluster in order to provide the humanitarian community with up-to-date information on location of internally displaced persons (IDP) sites, the conditions and capacity of the sites and the humanitarian needs of the residents.

Target locations for assessment were selected based on needs identified by the CCCM Cluster

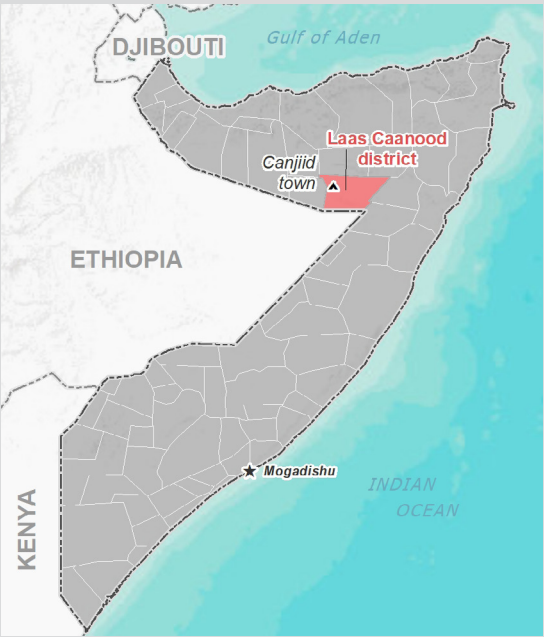
and accessibility for data collection.

A grid pattern approach<sup>2</sup> was applied during data collection to ensure that all IDP sites in the target area were identified. In each site, two key informant (KI) interviews were conducted: one with the site manager or community leader and one with a women's representative to ensure the perspectives of different groups were captured<sup>3</sup>. KI responses were aggregated to give one response per question per site.

This factsheet presents a summary of Canjiid Idp Camp Site profile along with the needs and priorities of IDPs residing in the site. As the data is captured through KIs, findings should be considered indicative only.

Date assessed: **Oct - 2017**

Location map



Assessed IDP sites in Laas Caanood

Coordinates: Lat. 8.582, Long. 47.26



1.United Nations High Commissioner for Refugees (UNHCR): Protection & Return Monitoring Network (PRMN), September 2017

2.For each target location, the area was divided into 1km<sup>2</sup> grids. Enumerator teams then visited each grid to verify whether an IDP site was present. By visiting all grids, teams were able to determine the total number of sites in each location.

3.Where KI responses were significantly divergent, these were verified with the respective KIs with a higher reliability accorded to the response provided by the site manager or community leader.





## Site Information

Settlement type	Spontaneous site
Estimated number of individuals	2700
Estimated number of households	450
Site capacity reached	No
Responsible management agency	Community leader
Date when most site residents arrived	Feb-17
Site owner	Private



## Protection

<b>Number of vulnerable households:</b>	
Female-headed households	380
Child-headed households	1
Elderly individuals <sup>4</sup>	168
Unaccompanied children	8
Individuals with a physical disability	20
Presence of shared community space	No
Presence of separate space for women/girls	No
Presence of child friendly space	No
Public lighting in the site	No
Type of landownership	Formal
Risk of eviction in next three months	No



## WASH

Access to potable water	No
<b>Number of latrines in the site:</b>	
Latrines (mixed)	0
Latrines (male)	0
Latrines (female)	0
Access to handwashing facilities	N/A



## Shelter and Non-Food Items (NFIs)

<b>Most common shelter types in the site<sup>5</sup>:</b>	
1. Buul	
2. N/A	
3. N/A	
Electricity available in the site	No
Access to a NFI market	No
Average walking time to the nearest NFI market	N/A
Perceived safe access to NFI market	N/A



## Displacement

<b>Estimated number of households per displacement group:</b>	
IDPs	450
Host community/ non-displaced	0
IDP households arrived in the past 3 months	65
<b>Most common areas of origin:</b>	
First area of origin	Sool
Second area of origin	Sanaag
Third area of origin	Togdheer



## Food Security

Primary source of food	Market purchase
Food distributions	None
Access to a food market	No



## Health and Nutrition

<b>Most common health issue(s) reported in the site:</b>	
1. Malaria	
2. N/A	
3. N/A	
Access to healthcare services	No
Average walking time to the nearest health service	N/A
Women give birth in the site	Yes
Access to nutrition services	No
Average walking time to the nearest nutrition service	N/A
<b>Access to nutrition services:</b>	<b>No</b>



## Education

Education services available	Yes
Average walking time to the nearest school	30 minutes
<b>Education facilities available to residents in the site<sup>5</sup>:</b>	
1. Primary	
2. N/A	
3. N/A	



## Communication

<b>Three most trusted sources of information<sup>5</sup>:</b>	
1. Friends, neighbours and family	
2. N/A	
3. N/A	
Most commonly spoken language	Somali Standard

4.More than 60 years old.

5.Key informants could select multiple responses.







Introduction

While an estimated 2.1 million people live in displacement sites in Somalia<sup>1</sup>, existing information on exact locations and site level vulnerabilities is sparse, and existing assessments have been ad-hoc and unharmonised, resulting in low comparability and verification.

The Detailed Site Assessment (DSA) was triggered in coordination with the Camp Coordination and Camp Management (CCCM) Cluster in order to provide the humanitarian community with up-to-date information on location of internally displaced persons (IDP) sites, the conditions and capacity of the sites and the humanitarian needs of the residents.

Target locations for assessment were selected based on needs identified by the CCCM Cluster

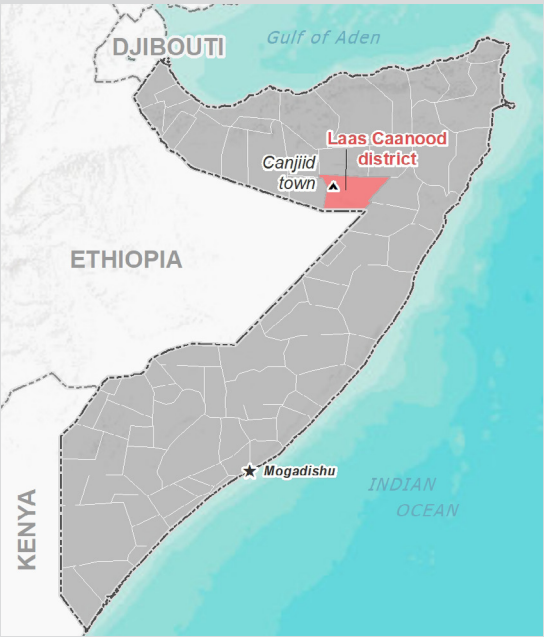
and accessibility for data collection.

A grid pattern approach<sup>2</sup> was applied during data collection to ensure that all IDP sites in the target area were identified. In each site, two key informant (KI) interviews were conducted: one with the site manager or community leader and one with a women's representative to ensure the perspectives of different groups were captured<sup>3</sup>. KI responses were aggregated to give one response per question per site.

This factsheet presents a summary of Wadajir Site profile along with the needs and priorities of IDPs residing in the site. As the data is captured through KIs, findings should be considered indicative only.

Date assessed: **Oct - 2017**

Location map



Assessed IDP sites in Laas Caanood

Coordinates: Lat. 8.482, Long. 47.363



1.United Nations High Commissioner for Refugees (UNHCR): Protection & Return Monitoring Network (PRMN), September 2017

2.For each target location, the area was divided into 1km<sup>2</sup> grids. Enumerator teams then visited each grid to verify whether an IDP site was present. By visiting all grids, teams were able to determine the total number of sites in each location.

3.Where KI responses were significantly divergent, these were verified with the respective KIs with a higher reliability accorded to the response provided by the site manager or community leader.







## Site Information

Settlement type	Planned site
Estimated number of individuals	34920
Estimated number of households	5820
Site capacity reached	Yes
Responsible management agency	Local authority
Date when most site residents arrived	Jan-17
Site owner	Local authority



## Protection

### Number of vulnerable households:

Female-headed households	2300
Child-headed households	60
Elderly individuals <sup>4</sup>	5940
Unaccompanied children	180
Individuals with a physical disability	54
Presence of shared community space	No
Presence of separate space for women/girls	No
Presence of child friendly space	No
Public lighting in the site	Yes
Type of landownership	Informal
Risk of eviction in next three months	Yes



## WASH

Access to potable water	No
<b>Number of latrines in the site:</b>	
Latrines (mixed)	0
Latrines (male)	10
Latrines (female)	0
Access to handwashing facilities	No



## Shelter and Non-Food Items (NFIs)

### Most common shelter types in the site<sup>5</sup>:

1. Tent	
2. Timber and plastic sheet	
3. Brick	
Electricity available in the site	Yes
Access to a NFI market	No
Average walking time to the nearest NFI market	N/A
Perceived safe access to NFI market	N/A



## Displacement

### Estimated number of households per displacement group:

IDPs	5820
Host community/ non-displaced	0
IDP households arrived in the past 3 months	2500

### Most common areas of origin:

First area of origin	Sool
Second area of origin	Sanaag
Third area of origin	Nugaal



## Food Security

Primary source of food	Market purchase
Food distributions	None
Access to a food market	Yes



## Health and Nutrition

### Most common health issue(s) reported in the site:

1. AWD / Cholera
2. Malaria
3. N/A

Access to healthcare services	Yes
Average walking time to the nearest health service	50 minutes
Women give birth in the site	No
Access to nutrition services	No
Average walking time to the nearest nutrition service	N/A

**Access to nutrition services: No**



## Education

Education services available	No
Average walking time to the nearest school	N/A

### Education facilities available to residents in the site<sup>5</sup>:

1. N/A
2. N/A
3. N/A



## Communication

### Three most trusted sources of information<sup>5</sup>:

1. Friends, neighbours and family
2. TV
3. Radio

Most commonly spoken language	Somali Standard
-------------------------------	-----------------

4.More than 60 years old.

5.Key informants could select multiple responses.



Introduction

While an estimated 2.1 million people live in displacement sites in Somalia<sup>1</sup>, existing information on exact locations and site level vulnerabilities is sparse, and existing assessments have been ad-hoc and unharmonised, resulting in low comparability and verification.

The Detailed Site Assessment (DSA) was triggered in coordination with the Camp Coordination and Camp Management (CCCM) Cluster in order to provide the humanitarian community with up-to-date information on location of internally displaced persons (IDP) sites, the conditions and capacity of the sites and the humanitarian needs of the residents.

Target locations for assessment were selected based on needs identified by the CCCM Cluster

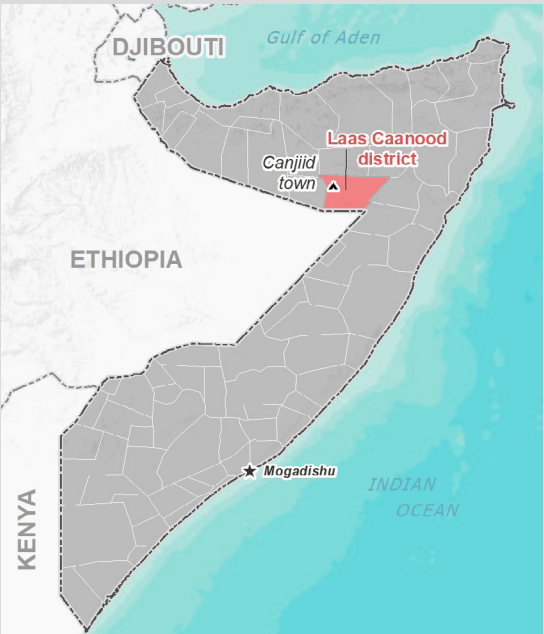
and accessibility for data collection.

A grid pattern approach<sup>2</sup> was applied during data collection to ensure that all IDP sites in the target area were identified. In each site, two key informant (KI) interviews were conducted: one with the site manager or community leader and one with a women's representative to ensure the perspectives of different groups were captured<sup>3</sup>. KI responses were aggregated to give one response per question per site.

This factsheet presents a summary of Ooda Gooye Site profile along with the needs and priorities of IDPs residing in the site. As the data is captured through KIs, findings should be considered indicative only.

Date assessed: **Oct - 2017**

Location map



Assessed IDP sites in Laas Caanood

Coordinates: Lat. 8.489, Long. 47.39



1.United Nations High Commissioner for Refugees (UNHCR): Protection & Return Monitoring Network (PRMN), September 2017

2.For each target location, the area was divided into 1km<sup>2</sup> grids. Enumerator teams then visited each grid to verify whether an IDP site was present. By visiting all grids, teams were able to determine the total number of sites in each location.

3.Where KI responses were significantly divergent, these were verified with the respective KIs with a higher reliability accorded to the response provided by the site manager or community leader.





## Site Information

Settlement type	Spontaneous site
Estimated number of individuals	480
Estimated number of households	80
Site capacity reached	No
Responsible management agency	Residents
Date when most site residents arrived	Sep-17
Site owner	None



## Protection

### Number of vulnerable households:

Female-headed households	25
Child-headed households	0
Elderly individuals <sup>4</sup>	50
Unaccompanied children	10
Individuals with a physical disability	5
Presence of shared community space	No
Presence of separate space for women/girls	Yes
Presence of child friendly space	No
Public lighting in the site	No
Type of landownership	N/A
Risk of eviction in next three months	No



## WASH

Access to potable water	No
Number of latrines in the site:	
Latrines (mixed)	0
Latrines (male)	0
Latrines (female)	0
Access to handwashing facilities	N/A



## Shelter and Non-Food Items (NFI)

### Most common shelter types in the site<sup>5</sup>:

1. Buul	
2. N/A	
3. N/A	
Electricity available in the site	No
Access to a NFI market	Yes
Average walking time to the nearest NFI market	60 minutes
Perceived safe access to NFI market	Yes



## Displacement

### Estimated number of households per displacement group:

IDPs	80
Host community/ non-displaced	0
IDP households arrived in the past 3 months	40

### Most common areas of origin:

First area of origin	Sool
Second area of origin	N/A
Third area of origin	N/A



## Food Security

Primary source of food	Market purchase
Food distributions	None
Access to a food market	No



## Health and Nutrition

### Most common health issue(s) reported in the site:

1. AWD / Cholera
2. N/A
3. N/A

Access to healthcare services	No
Average walking time to the nearest health service	N/A
Women give birth in the site	Yes
Access to nutrition services	No
Average walking time to the nearest nutrition service	N/A

Access to nutrition services: No



## Education

Education services available	No
Average walking time to the nearest school	N/A

### Education facilities available to residents in the site<sup>5</sup>:

1. N/A
2. N/A
3. N/A



## Communication

### Three most trusted sources of information<sup>5</sup>:

1. Friends, neighbours and family
2. Radio
3. N/A

Most commonly spoken language	Somali Standard
-------------------------------	-----------------

4.More than 60 years old.

5.Key informants could select multiple responses.



Introduction

While an estimated 2.1 million people live in displacement sites in Somalia<sup>1</sup>, existing information on exact locations and site level vulnerabilities is sparse, and existing assessments have been ad-hoc and unharmonised, resulting in low comparability and verification.

The Detailed Site Assessment (DSA) was triggered in coordination with the Camp Coordination and Camp Management (CCCM) Cluster in order to provide the humanitarian community with up-to-date information on location of internally displaced persons (IDP) sites, the conditions and capacity of the sites and the humanitarian needs of the residents.

Target locations for assessment were selected based on needs identified by the CCCM Cluster

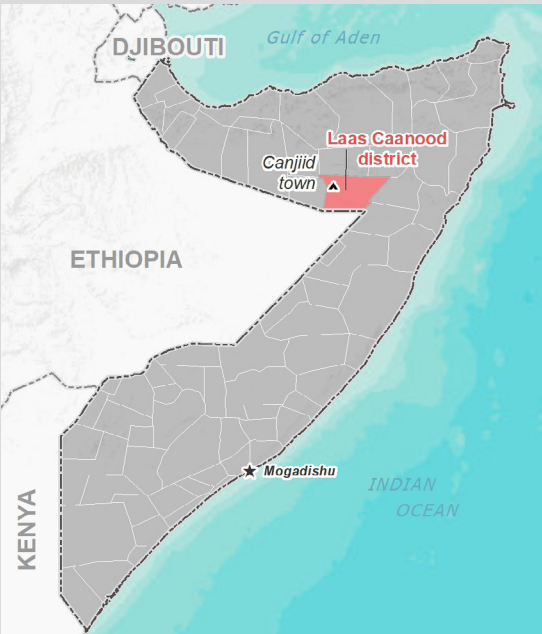
and accessibility for data collection.

A grid pattern approach<sup>2</sup> was applied during data collection to ensure that all IDP sites in the target area were identified. In each site, two key informant (KI) interviews were conducted: one with the site manager or community leader and one with a women's representative to ensure the perspectives of different groups were captured<sup>3</sup>. KI responses were aggregated to give one response per question per site.

This factsheet presents a summary of Dhiirigobo Idp Camp Site profile along with the needs and priorities of IDPs residing in the site. As the data is captured through KIs, findings should be considered indicative only.

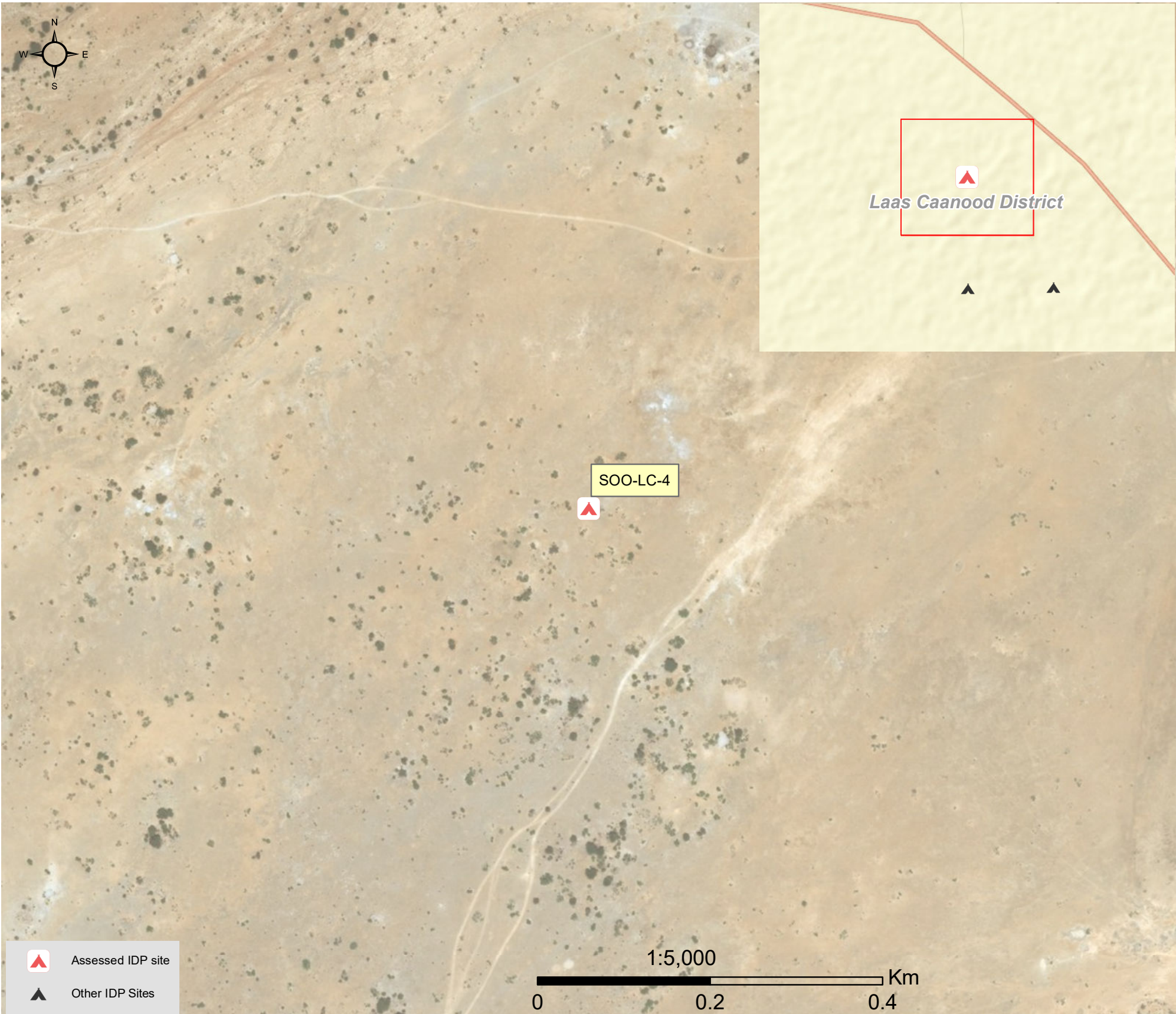
Date assessed: **Oct - 2017**

Location map



Assessed IDP sites in Laas Caanood

Coordinates: Lat. 8.676, Long. 47.143



1.United Nations High Commissioner for Refugees (UNHCR): Protection & Return Monitoring Network (PRMN), September 2017

2.For each target location, the area was divided into 1km<sup>2</sup> grids. Enumerator teams then visited each grid to verify whether an IDP site was present. By visiting all grids, teams were able to determine the total number of sites in each location.

3.Where KI responses were significantly divergent, these were verified with the respective KIs with a higher reliability accorded to the response provided by the site manager or community leader.





## Site Information

Settlement type	Spontaneous site
Estimated number of individuals	1500
Estimated number of households	250
Site capacity reached	Yes
Responsible management agency	Local authority
Date when most site residents arrived	Jun-17
Site owner	Local authority



## Protection

### Number of vulnerable households:

Female-headed households	89
Child-headed households	0
Elderly individuals <sup>4</sup>	275
Unaccompanied children	4
Individuals with a physical disability	128

Presence of shared community space	No
Presence of separate space for women/girls	No
Presence of child friendly space	No
Public lighting in the site	Yes
Type of landownership	Informal
Risk of eviction in next three months	No



## WASH

Access to potable water	No
<b>Number of latrines in the site:</b>	
Latrines (mixed)	0
Latrines (male)	0
Latrines (female)	0
Access to handwashing facilities	N/A



## Shelter and Non-Food Items (NFI)

### Most common shelter types in the site<sup>5</sup>:

1. Buul
2. N/A
3. N/A

Electricity available in the site	No
Access to a NFI market	No
Average walking time to the nearest NFI market	N/A
Perceived safe access to NFI market	N/A



## Displacement

### Estimated number of households per displacement group:

IDPs	250
Host community/ non-displaced	0
IDP households arrived in the past 3 months	0

### Most common areas of origin:

First area of origin	Sool
Second area of origin	Togdheer
Third area of origin	Nugaal



## Food Security

Primary source of food	Market purchase
Food distributions	None
Access to a food market	No



## Health and Nutrition

### Most common health issue(s) reported in the site:

1. None
2. N/A
3. N/A

Access to healthcare services	No
Average walking time to the nearest health service	N/A
Women give birth in the site	Yes
Access to nutrition services	No
Average walking time to the nearest nutrition service	N/A

**Access to nutrition services:** No



## Education

Education services available	No
Average walking time to the nearest school	N/A

### Education facilities available to residents in the site<sup>5</sup>:

1. N/A
2. N/A
3. N/A



## Communication

### Three most trusted sources of information<sup>5</sup>:

1. Friends, neighbours and family
2. N/A
3. N/A

Most commonly spoken language	Somali Standard
-------------------------------	-----------------

4.More than 60 years old.

5.Key informants could select multiple responses.



Introduction

While an estimated 2.1 million people live in displacement sites in Somalia<sup>1</sup>, existing information on exact locations and site level vulnerabilities is sparse, and existing assessments have been ad-hoc and unharmonised, resulting in low comparability and verification.

The Detailed Site Assessment (DSA) was triggered in coordination with the Camp Coordination and Camp Management (CCCM) Cluster in order to provide the humanitarian community with up-to-date information on location of internally displaced persons (IDP) sites, the conditions and capacity of the sites and the humanitarian needs of the residents.

Target locations for assessment were selected based on needs identified by the CCCM Cluster

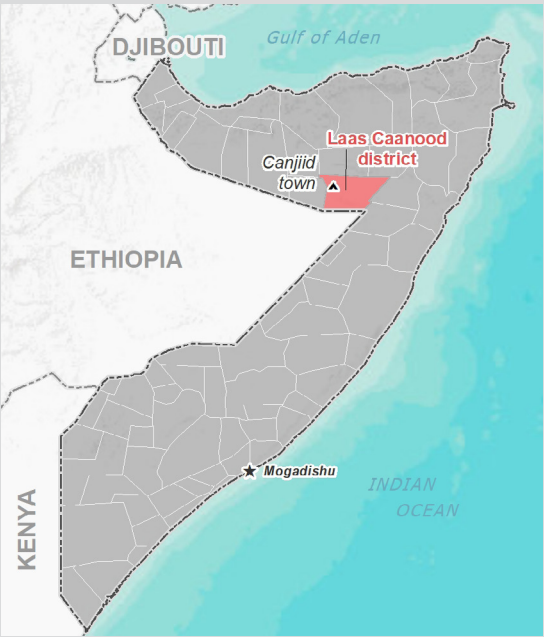
and accessibility for data collection.

A grid pattern approach<sup>2</sup> was applied during data collection to ensure that all IDP sites in the target area were identified. In each site, two key informant (KI) interviews were conducted: one with the site manager or community leader and one with a women's representative to ensure the perspectives of different groups were captured<sup>3</sup>. KI responses were aggregated to give one response per question per site.

This factsheet presents a summary of Cadaadda Guumays Site profile along with the needs and priorities of IDPs residing in the site. As the data is captured through KIs, findings should be considered indicative only.

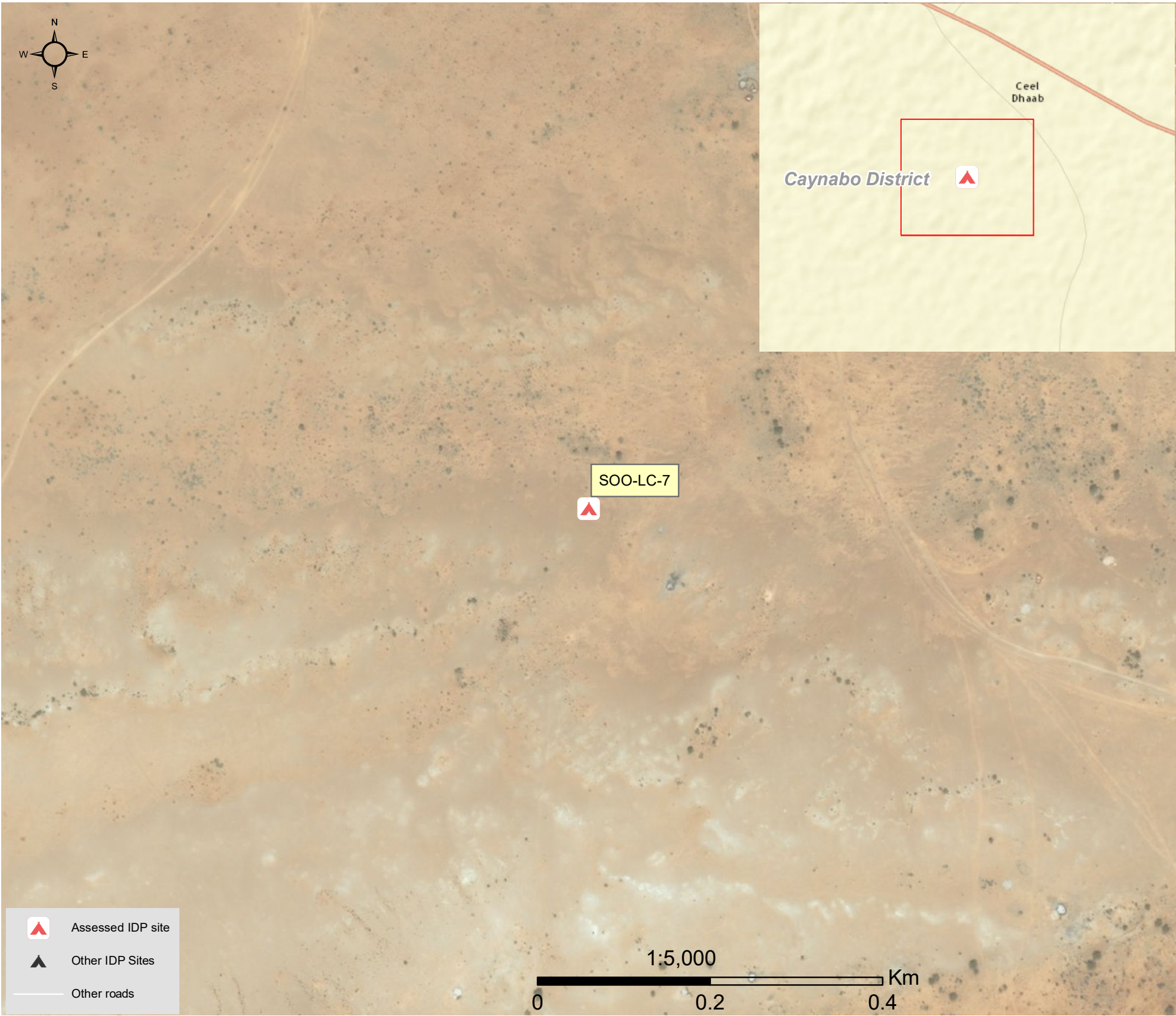
Date assessed: **Oct - 2017**

Location map



Assessed IDP sites in Laas Caanood

Coordinates: Lat. 8.836, Long. 46.798



1.United Nations High Commissioner for Refugees (UNHCR): Protection & Return Monitoring Network (PRMN), September 2017

2.For each target location, the area was divided into 1km<sup>2</sup> grids. Enumerator teams then visited each grid to verify whether an IDP site was present. By visiting all grids, teams were able to determine the total number of sites in each location.

3.Where KI responses were significantly divergent, these were verified with the respective KIs with a higher reliability accorded to the response provided by the site manager or community leader.





## Site Information

Settlement type	Spontaneous site
Estimated number of individuals	4350
Estimated number of households	725
Site capacity reached	No
Responsible management agency	Local authority
Date when most site residents arrived	Jul-17
Site owner	None



## Protection

### Number of vulnerable households:

Female-headed households	200
Child-headed households	0
Elderly individuals <sup>4</sup>	350
Unaccompanied children	0
Individuals with a physical disability	35

Presence of shared community space	No
Presence of separate space for women/girls	No
Presence of child friendly space	No
Public lighting in the site	No
Type of landownership	N/A
Risk of eviction in next three months	No



## WASH

Access to potable water	Yes
<b>Number of latrines in the site:</b>	
Latrines (mixed)	0
Latrines (male)	0
Latrines (female)	0
Access to handwashing facilities	N/A



## Shelter and Non-Food Items (NFIs)

### Most common shelter types in the site<sup>5</sup>:

1. Buul
2. N/A
3. N/A

Electricity available in the site	No
Access to a NFI market	No
Average walking time to the nearest NFI market	N/A
Perceived safe access to NFI market	N/A



## Displacement

### Estimated number of households per displacement group:

IDPs	600
Host community/ non-displaced	125
IDP households arrived in the past 3 months	250

### Most common areas of origin:

First area of origin	Sool
Second area of origin	Togdheer
Third area of origin	N/A



## Food Security

Primary source of food	Market purchase
Food distributions	None
Access to a food market	No



## Health and Nutrition

### Most common health issue(s) reported in the site:

1. AWD / Cholera
2. Malaria
3. N/A

Access to healthcare services	No
Average walking time to the nearest health service	N/A
Women give birth in the site	Yes
Access to nutrition services	No
Average walking time to the nearest nutrition service	N/A

**Access to nutrition services:** No



## Education

Education services available	No
Average walking time to the nearest school	N/A

### Education facilities available to residents in the site<sup>5</sup>:

1. N/A
2. N/A
3. N/A



## Communication

### Three most trusted sources of information<sup>5</sup>:

1. Friends, neighbours and family
2. Radio
3. N/A

Most commonly spoken language	Somali Standard
-------------------------------	-----------------

4.More than 60 years old.

5.Key informants could select multiple responses.

