

IRAQ - Kirkuk Governorate - Laylan 1 Camp

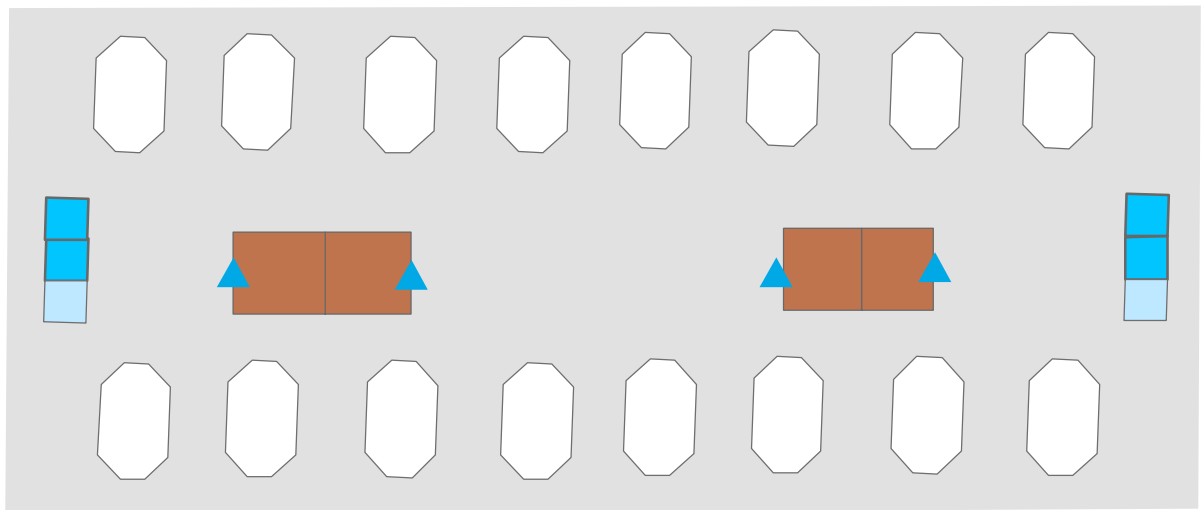
General Infrastructure - Updated 31 January 2018

Camp Infrastructure

- Fence
- Sector (A - Z)
- Health
- Office
- Distribution
- Education
- Child Friendly Space
- Community Area
- Service
- Storage
- Entrance
- NGO Office
- Water Tank (106)
- Borehole (2)
- Bakery
- Generator

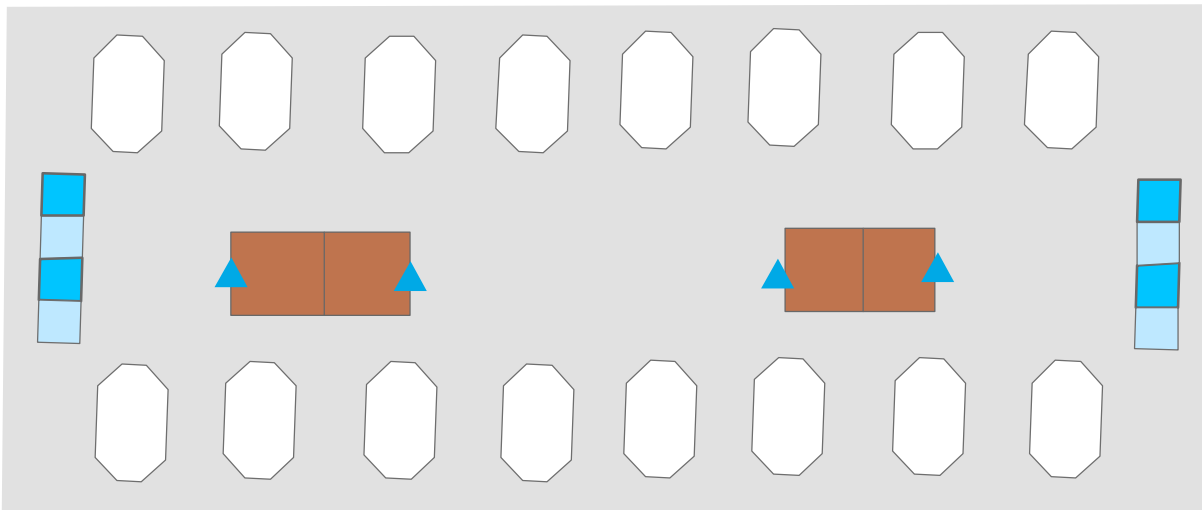
Layout of Single Block Sector (A - T)

- Tent
- Latrine
- Tap Stand
- Kitchen
- Shower



Layout of Single Block Sector (T - Z)

- Tent
- Latrine
- Tap Stand
- Kitchen
- Shower



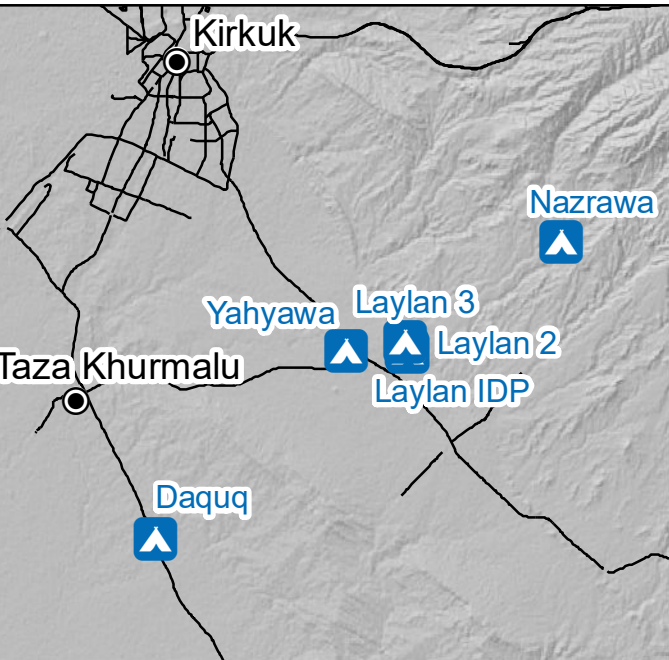
**GPS Coordinates
of Camp Location:**
Longitude: 44° 31' 48.575" E
(44.51667)
Latitude: 35° 19' 46.44" N
(35.32957)

Thematic Data: - 31/01/2018 REACH
Administrative boundaries: GADM

Satellite Imagery: Pleiades from 29/07/2016
Copyright: CNES
Source: Airbus DS

Projection: WGS 1984 UTM Zone 38N
Contact : iraq@reach-initiative.org
File: IRQ_MAP_IDP_Laylan1_01Feb2018

Note: Data, designations and boundaries
contained on this map are not warranted to be
error-free and do not imply acceptance by the
REACH partners, associates or donors
mentioned on this map.



Scale 1: 650
0 75 150 Meters