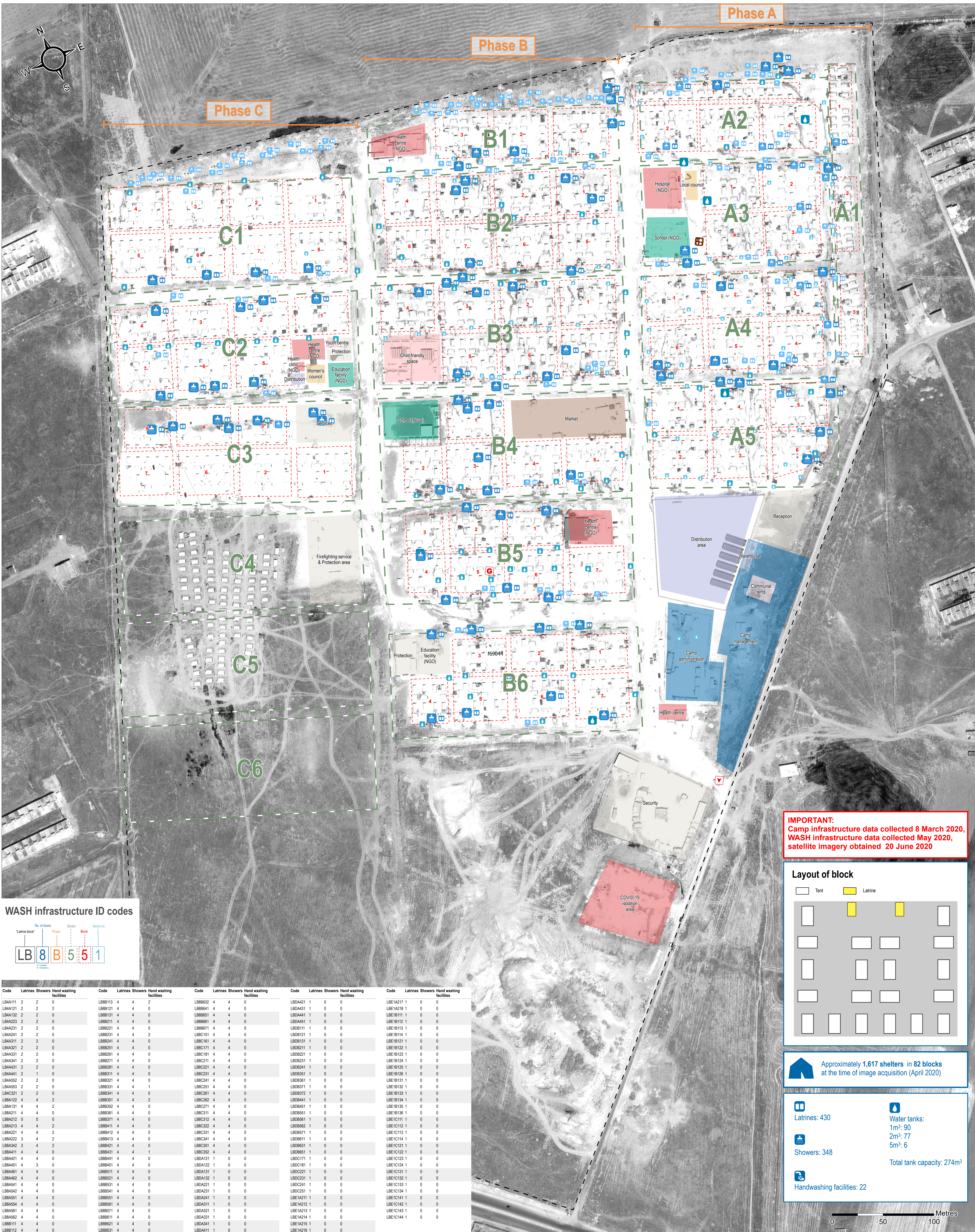


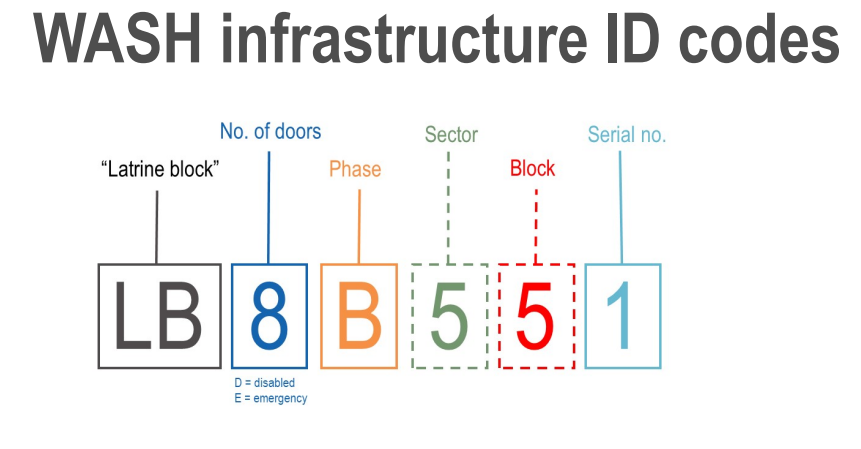
# SYRIA - Washokani IDP Camp

## General Infrastructure - As of June 2020

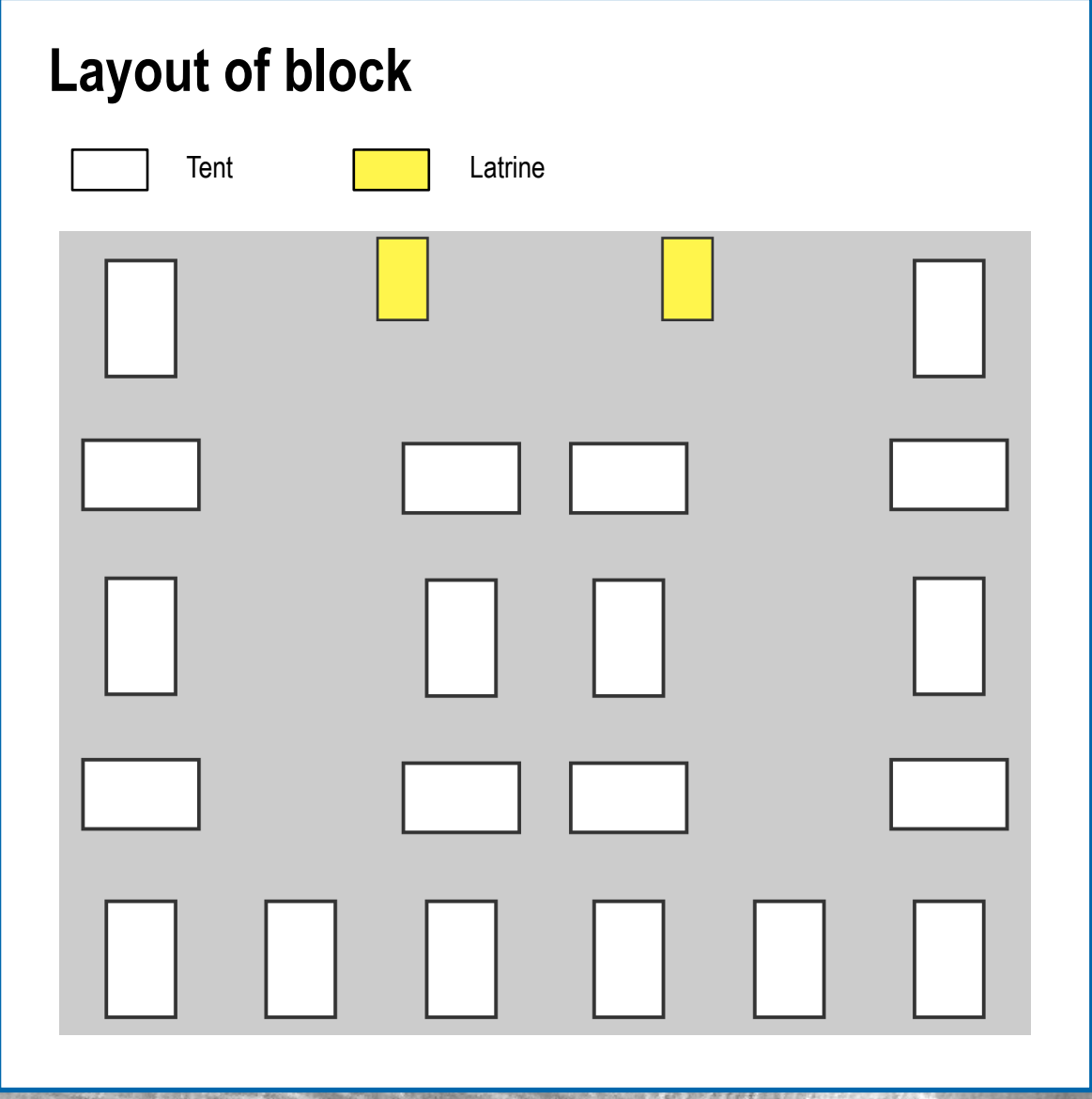
For Humanitarian Purposes Only  
Production date : 20 July 2020



**IMPORTANT:**  
Camp infrastructure data collected 8 March 2020,  
WASH infrastructure data collected May 2020,  
satellite imagery obtained 20 June 2020



Code	Latrines	Showers	Hand washing facilities	Code	Latrines	Showers	Hand washing facilities	Code	Latrines	Showers	Hand washing facilities	Code	Latrines	Showers	Hand washing facilities	Code	Latrines	Showers	Hand washing facilities
LB4A111	2	2	0	LB8B113	4	4	2	LB8B532	4	4	0	LBDA21	1	0	0	LBEA217	1	0	0
LB4A121	2	2	0	LB8B121	4	4	0	LB8B541	4	4	0	LBDA41	1	0	0	LBEB118	1	0	0
LB4A132	2	0	0	LB8B131	4	4	0	LB8B551	4	4	0	LBDA411	1	0	0	LBEB119	1	0	0
LB4A223	2	2	0	LB8B211	4	4	0	LB8B561	4	4	0	LBDA451	1	0	0	LBEB112	1	0	0
LB4A231	2	2	0	LB8B221	4	4	0	LB8B571	4	4	0	LBDB111	1	0	0	LBEB113	1	0	0
LB4A241	2	2	0	LB8B231	4	4	2	LB8B581	4	4	0	LBDB121	1	0	0	LBEB114	1	0	0
LB4A311	2	2	0	LB8B241	4	4	0	LB8B591	4	4	0	LBDB131	1	0	0	LBEB121	1	0	0
LB4A321	2	2	0	LB8B251	4	4	0	LB8C111	4	4	0	LBDB211	1	0	0	LBEB122	1	0	0
LB4A331	2	2	0	LB8B261	4	4	0	LB8C121	4	4	0	LBDB221	1	0	0	LBEB123	1	0	0
LB4A341	2	2	0	LB8B271	4	4	0	LB8C211	4	4	0	LBDB231	1	0	0	LBEB124	1	0	0
LB4A431	2	2	0	LB8B281	4	4	0	LB8C221	4	4	0	LBDB241	1	0	0	LBEB125	1	0	0
LB4A441	2	1	0	LB8B311	4	4	0	LB8C231	4	4	0	LBDB311	1	0	0	LBEB126	1	0	0
LB4A552	2	2	0	LB8B321	4	4	0	LB8C241	4	4	0	LBDB361	1	0	0	LBEB131	1	0	0
LB4A553	2	2	0	LB8B331	4	4	1	LB8C251	4	4	0	LBDB371	1	0	0	LBEB132	1	0	0
LB4A561	2	2	0	LB8B341	4	4	0	LB8C261	4	4	0	LBDB372	1	0	0	LBEB133	1	0	0
LB8A122	4	4	2	LB8B351	4	4	0	LB8C271	4	4	0	LBDB381	1	0	0	LBEB134	1	0	0
LB8A131	4	4	2	LB8B361	4	4	0	LB8C271	4	4	0	LBDB451	1	0	0	LBEB135	1	0	0
LB8A211	4	4	0	LB8B361	4	4	0	LB8C311	4	4	0	LBDB551	1	0	0	LBEB136	1	0	0
LB8A212	0	0	0	LB8B371	4	4	0	LB8C312	4	4	0	LBDB561	1	0	0	LBEB137	1	0	0
LB8A213	4	4	2	LB8B411	4	4	0	LB8C322	4	4	0	LBDB562	1	0	0	LBEB138	1	0	0
LB8A242	4	4	2	LB8B412	4	4	0	LB8C331	4	4	0	LBDB571	1	0	0	LBEB139	1	0	0
LB8A222	3	4	2	LB8B413	4	4	0	LB8C341	4	4	0	LBDB611	1	0	0	LBEB141	1	0	0
LB8A342	3	4	2	LB8B421	4	4	0	LB8C352	4	4	0	LBDB621	1	0	0	LBEB142	1	0	0
LB8A411	4	4	0	LB8B431	4	4	1	LB8C352	4	4	0	LBDB651	1	0	0	LBEB143	1	0	0
LB8A421	4	4	0	LB8B441	4	4	0	LBDA121	1	0	0	LBDB651	1	0	0	LBEB144	1	0	0
LB8A451	4	3	0	LB8B451	4	4	0	LBDA122	1	0	0	LBDB651	1	0	0	LBEB145	1	0	0
LB8A461	4	4	0	LB8B511	4	4	0	LBDA131	1	0	0	LBDB651	1	0	0	LBEB146	1	0	0
LB8A462	4	4	0	LB8B521	4	4	0	LBDA131	1	0	0	LBDB651	1	0	0	LBEB147	1	0	0
LB8A463	4	4	0	LB8B531	4	4	0	LBDA221	1	0	0	LBDB651	1	0	0	LBEB148	1	0	0
LB8A464	4	4	0	LB8B541	4	4	0	LBDA231	1	0	0	LBDB651	1	0	0	LBEB149	1	0	0
LB8A465	4	4	0	LB8B551	4	4	0	LBDA241	1	0	0	LBDB651	1	0	0	LBEB150	1	0	0
LB8A466	4	4	0	LB8B561	4	4	0	LBDA311	1	0	0	LBDB651	1	0	0	LBEB151	1	0	0
LB8A467	4	4	0	LB8B571	4	4	0	LBDA311	1	0	0	LBDB651	1	0	0	LBEB152	1	0	0
LB8A468	4	4	0	LB8B581	4	4	0	LBDA331	1	0	0	LBDB651	1	0	0	LBEB153	1	0	0
LB8A469	4	4	0	LB8B591	4	4	0	LBDA341	1	0	0	LBDB651	1	0	0	LBEB154	1	0	0
LB8A470	4	4	0	LB8B621	4	4	0	LBDA341	1	0	0	LBDB651	1	0	0	LBEB155	1	0	0
LB8A471	4	4	0	LB8B631	4	4	0	LBDA411	1	0	0	LBDB651	1	0	0	LBEB156	1	0	0
LB8A472	4	4	0									LBDB651	1	0	0	LBEB157	1	0	0



Approximately 1,617 shelters in 82 blocks at the time of image acquisition (April 2020)

**Latrines:** 430  
**Showers:** 348  
**Handwashing facilities:** 22

**Water tanks:**  
1m<sup>3</sup>: 90  
2m<sup>3</sup>: 77  
5m<sup>3</sup>: 6  
**Total tank capacity:** 274m<sup>3</sup>

- General infrastructure**
- Block
  - Sector
  - Boundary
  - Entrance
  - Generator
  - Kitchen
  - Camp management / Authorities
  - Community
  - Distribution
  - Health
  - Market
  - Mass tent
  - School
  - Service
  - Storage
  - CFS
  - Security
- Sanitation infrastructure**
- Latrines: 1 latrine, 2-4 latrines, 5-7 latrines, 8+ latrines
  - Showers: 1 shower, 2 showers, 3-4 showers
  - Water tank capacity: 1m<sup>3</sup>, 2m<sup>3</sup>, 5m<sup>3</sup>

Contact: [mena.reach@impact-initiatives.org](mailto:mena.reach@impact-initiatives.org)  
Projection: WGS 1984 UTM 37N  
Data Sources: Infrastructure: REACH, WASH infrastructure: NES08  
Satellite Imagery: GeoEye-1 from 20 June 2020  
Copyright: © 2020 DigitalGlobe  
Source: US Department of State, Humanitarian Information Unit, NextView license  
File name: REACH\_SYR\_Map\_Washokani\_CAMP\_July20\_A0

Note: Data, designations and boundaries contained on this map are not warranted to be error-free and do not imply acceptance by the REACH partners, associated, donors mentioned on this map.