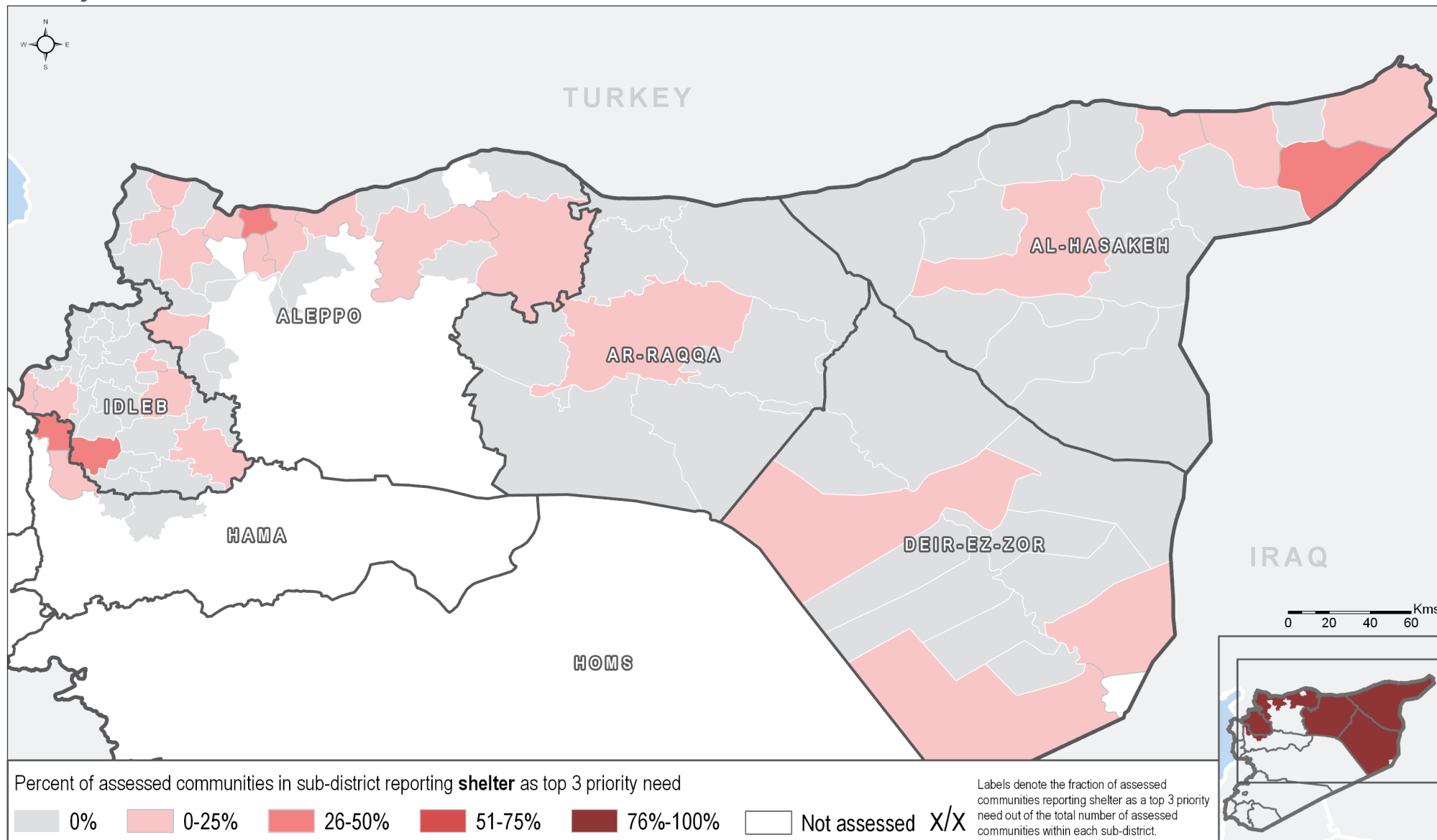


Priority Need: Shelter - March 2019

Humanitarian Use Only
Production date : 15/05/2019



Data source: REACH - Humanitarian Situation Overview of Syria (HSOS)
Priority need questions were 'select up to three' so the percentages across all maps sum to more than 100%.

Priority needs reported are the perceived top 3 priority needs as reported by KIs within assessed communities and are not necessarily representative of actual priorities.

Annexes are available on request detailing the priorities reported by each assessed community.

Humanitarian Situation Overview in Syria (HSOS) March 2019

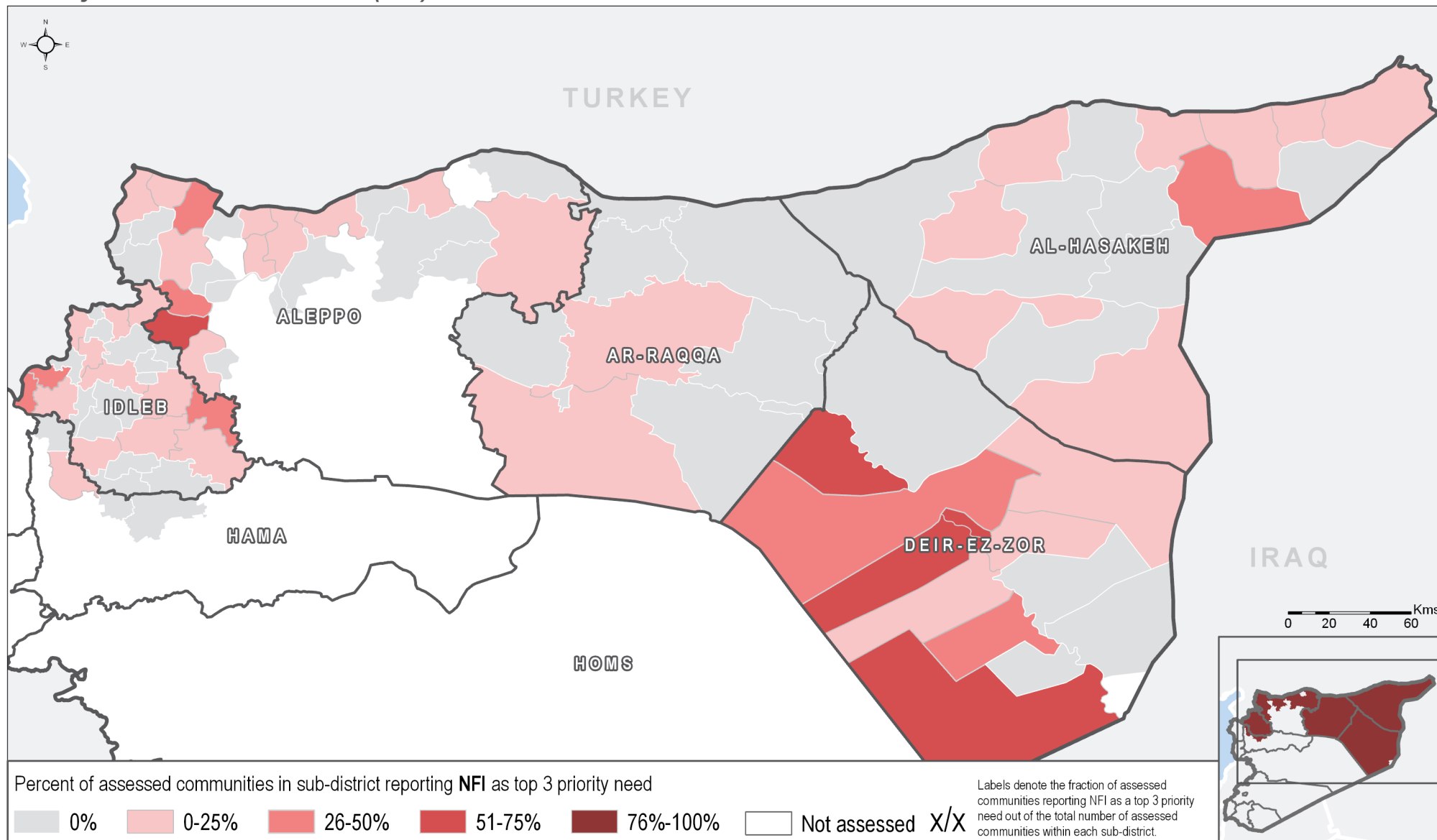
Number of assessed communities in sub-district reporting shelter as top 3 priority need

Governorate	Sub-District	Shelter	Governorate	Sub-District	Shelter	Governorate	Sub-District	Shelter	Governorate	Sub-District	Shelter
Al-Hasakeh	Al-Hasakeh	1/8	Aleppo	Bulbul	2/34	Ar-Raqqa	Sabka	0/10	Idleb	Bennsh	1/4
Al-Hasakeh	Al-Malikeyyeh	1/34	Aleppo	Daret Azza	0/25	Ar-Raqqa	Suluk	0/5	Idleb	Dana	0/20
Al-Hasakeh	Amuda	0/17	Aleppo	Ghandorah	0/34	Ar-Raqqa	Tell Abiad	0/26	Idleb	Darkosh	0/26
Al-Hasakeh	Areesheh	0/12	Aleppo	Hadher	0/1	Deir-ez-Zor	Abu Kamal	1/10	Idleb	Ehsem	0/19
Al-Hasakeh	Be'r Al-Hulo Al-Wardeyyeh	0/9	Aleppo	Haritan	0/8	Deir-ez-Zor	Al Mayadin	0/8	Idleb	Harim	0/5
Al-Hasakeh	Darbasiyah	0/15	Aleppo	Jandairis	0/44	Deir-ez-Zor	Ashara	0/7	Idleb	Heish	0/17
Al-Hasakeh	Hole	0/1	Aleppo	Jarablus	0/35	Deir-ez-Zor	Basira	0/14	Idleb	Idleb	0/15
Al-Hasakeh	Jawadiyah	0/17	Aleppo	Ma'btali	1/25	Deir-ez-Zor	Deir-ez-Zor	2/19	Idleb	Janudiyeh	0/14
Al-Hasakeh	Markada	0/11	Aleppo	Mare'	1/6	Deir-ez-Zor	Hajin	1/4	Idleb	Jisr-Ash-Shugur	1/32
Al-Hasakeh	Qahtaniyyeh	3/20	Aleppo	Menbij	1/35	Deir-ez-Zor	Jalaa	0/5	Idleb	Kafr Nobol	9/28
Al-Hasakeh	Quamishli	1/25	Aleppo	Nabul	0/1	Deir-ez-Zor	Khasham	0/9	Idleb	Kafr Takharim	0/10
Al-Hasakeh	Ras Al Ain	0/4	Aleppo	Raju	0/50	Deir-ez-Zor	Kisreh	0/37	Idleb	Khan Shaykun	0/11
Al-Hasakeh	Shadadah	0/6	Aleppo	Sarin	1/10	Deir-ez-Zor	Muhasan	0/6	Idleb	Ma'arrat An Nu'man	0/38
Al-Hasakeh	Tal Hmis	0/10	Aleppo	Sharan	0/35	Deir-ez-Zor	Sur	0/15	Idleb	Maaret Tamsrin	0/16
Al-Hasakeh	Tal Tamer	0/4	Aleppo	Sheikh El-Hadid	0/13	Deir-ez-Zor	Tabni	0/13	Idleb	Mhambal	0/22
Al-Hasakeh	Ya'robiyah	1/3	Aleppo	Suran	10/25	Deir-ez-Zor	Thiban	0/11	Idleb	Qourqeena	0/15
Aleppo	A'zaz	3/16	Aleppo	Zarbah	0/16	Hama	Kafr Zeita	0/6	Idleb	Salqin	0/24
Aleppo	Abu Qalqal	0/9	Ar-Raqqa	Al-Thawrah	0/1	Hama	Madiq Castle	4/23	Idleb	Sanjar	1/9
Aleppo	Afrin	8/41	Ar-Raqqa	Ar-Raqqa	2/51	Hama	Suran	0/1	Idleb	Saraqab	4/25
Aleppo	Aghtrin	1/40	Ar-Raqqa	Ein Issa	0/17	Hama	Ziyara	5/10	Idleb	Sarmin	0/1
Aleppo	Ain al Arab	0/7	Ar-Raqqa	Jurneyyeh	0/42	Idleb	Abul Thohur	0/5	Idleb	Tamanaah	0/5
Aleppo	Al Bab	0/23	Ar-Raqqa	Karama	0/14	Idleb	Ariha	0/34	Idleb	Teftnaz	0/7
Aleppo	Ar-Ra'ee	6/31	Ar-Raqqa	Maadan	0/5	Idleb	Armanaz	0/14			
Aleppo	Atareb	2/30	Ar-Raqqa	Mansura	0/17	Idleb	Badama	2/10			

Data source: REACH - Humanitarian Situation Overview of Syria (HSOS)

Priority Need: Non Food Items (NFI) - March 2019

Humanitarian Use Only
Production date : 15/05/2019



Data source: REACH - Humanitarian Situation Overview of Syria (HSOS)
Priority need questions were 'select up to three' so the percentages across all maps sum to more than 100%.

Priority needs reported are the perceived top 3 priority needs as reported by KIs within assessed communities and are not necessarily representative of actual priorities.

Annexes are available on request detailing the priorities reported by each assessed community.

Humanitarian Situation Overview in Syria (HSOS) March 2019

Number of assessed communities in sub-district reporting NFI as top 3 priority need

Governorate	Sub-District	NFI	Governorate	Sub-District	NFI	Governorate	Sub-District	NFI	Governorate	Sub-District	NFI
Al-Hasakeh	Al-Hasakeh	0/8	Aleppo	Bulbul	6/34	Ar-Raqqa	Sabka	0/10	Idleb	Bennsh	0/4
Al-Hasakeh	Al-Malikeyyeh	4/34	Aleppo	Daret Azza	9/25	Ar-Raqqa	Suluk	0/5	Idleb	Dana	1/20
Al-Hasakeh	Amuda	0/17	Aleppo	Ghandorah	0/34	Ar-Raqqa	Tell Abiad	0/26	Idleb	Darkosh	0/26
Al-Hasakeh	Areeshah	1/12	Aleppo	Hadher	0/1	Deir-ez-Zor	Abu Kamal	7/10	Idleb	Ehsem	0/19
Al-Hasakeh	Be'r Al-Hulo Al-Wardeyyeh	0/9	Aleppo	Haritan	0/8	Deir-ez-Zor	Al Mayadin	1/8	Idleb	Harim	0/5
Al-Hasakeh	Darbasiyah	2/15	Aleppo	Jandairis	0/44	Deir-ez-Zor	Ashara	3/7	Idleb	Heish	0/17
Al-Hasakeh	Hole	0/1	Aleppo	Jarablus	7/35	Deir-ez-Zor	Basira	2/14	Idleb	Idleb	1/15
Al-Hasakeh	Jawadiyah	3/17	Aleppo	Ma'btali	0/25	Deir-ez-Zor	Deir-ez-Zor	9/19	Idleb	Janudiyeh	7/14
Al-Hasakeh	Markada	1/11	Aleppo	Mare'	1/6	Deir-ez-Zor	Hajin	0/4	Idleb	Jisr-Ash-Shugur	7/32
Al-Hasakeh	Qahtaniyyeh	2/20	Aleppo	Menbij	0/35	Deir-ez-Zor	Jalaa	0/5	Idleb	Kafr Nobol	3/28
Al-Hasakeh	Quamishli	4/25	Aleppo	Nabul	0/1	Deir-ez-Zor	Khasham	5/9	Idleb	Kafr Takharim	0/10
Al-Hasakeh	Ras Al Ain	0/4	Aleppo	Raju	5/50	Deir-ez-Zor	Kisreh	0/37	Idleb	Khan Shaykun	0/11
Al-Hasakeh	Shadadah	0/6	Aleppo	Sarin	2/10	Deir-ez-Zor	Muhasan	4/6	Idleb	Ma'arrat An Nu'man	1/38
Al-Hasakeh	Tal Hmis	3/10	Aleppo	Sharan	16/35	Deir-ez-Zor	Sur	1/15	Idleb	Maaret Tamsrin	0/16
Al-Hasakeh	Tal Tamer	1/4	Aleppo	Sheikh El-Hadid	0/13	Deir-ez-Zor	Tabni	7/13	Idleb	Mhambal	0/22
Al-Hasakeh	Ya'robiyah	0/3	Aleppo	Suran	2/25	Deir-ez-Zor	Thiban	0/11	Idleb	Qourqeena	3/15
Aleppo	A'zaz	0/16	Aleppo	Zarbah	1/16	Hama	Kafr Zeita	0/6	Idleb	Salqin	1/24
Aleppo	Abu Qalqal	0/9	Ar-Raqqa	Al-Thawrah	0/1	Hama	Madiq Castle	5/23	Idleb	Sanjar	1/9
Aleppo	Afrin	1/41	Ar-Raqqa	Ar-Raqqa	1/51	Hama	Suran	0/1	Idleb	Saraqab	1/25
Aleppo	Aghtrin	3/40	Ar-Raqqa	Ein Issa	0/17	Hama	Ziyara	0/10	Idleb	Sarmin	0/1
Aleppo	Ain al Arab	0/7	Ar-Raqqa	Jurneyyeh	0/42	Idleb	Abul Thohur	2/5	Idleb	Tamanaah	0/5
Aleppo	Al Bab	0/23	Ar-Raqqa	Karama	0/14	Idleb	Ariha	0/34	Idleb	Teftnaz	0/7
Aleppo	Ar-Ra'ee	1/31	Ar-Raqqa	Maadan	0/5	Idleb	Armanaz	2/14			
Aleppo	Atareb	17/30	Ar-Raqqa	Mansura	1/17	Idleb	Badama	3/10			

Data source: REACH - Humanitarian Situation Overview of Syria (HSOS)

Humanitarian Situation Overview in Syria (HSOS) March 2019

SHELTER AND NFI IN NORTHEAST SYRIA (NES)

3,868 SYP Regional average monthly reported rent price in SYP across assessed communities.¹

5,819 SYP Northern Syria average monthly reported rent price in SYP across assessed communities.^{1,2}

Most commonly reported shelter type for pre-conflict population households:³

Independent apartment/house 100%

Most commonly reported shelter type for IDP households:³

Independent apartment/house 66%

Shared apartment/house 25%

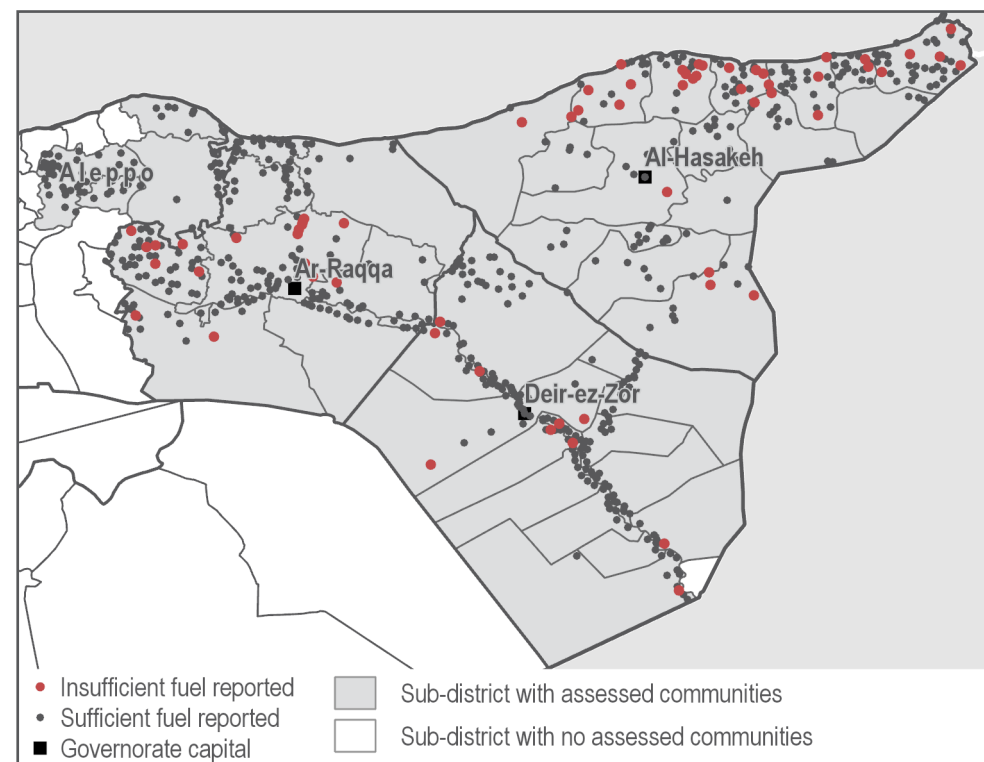
Unfinished apartment/house 4%

Tent 4%

Reported fuel prices (in SYP):^{1,4}

Fuel type (1L):	Regional average price in March 2019:	One month change:	Six month change:
GoS petrol	188	-3%	-47%
GoS diesel	55	0%	-15%
Manually refined petrol	200	0%	0%
Manually refined diesel	130	0%	+37%
Cooking fuel	3,438	-2%	-8%

Communities that reported insufficient amounts of fuel to meet household needs:⁷



540 communities reported no lack of fuel. Most common strategies to cope with lack of fuel in the remaining 63 assessed communities:^{3,5,6}

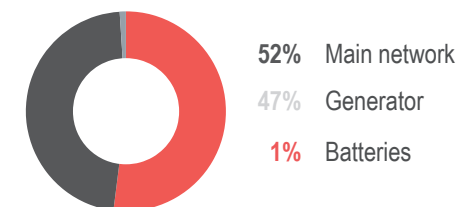
Burning productive assets 43%

Burning furniture in use 27%

Burning furniture not in use 22%

Cutting trees to burn 19%

Primary source of electricity reported:³



Humanitarian Situation Overview in Syria (HSOS) March 2019

SHELTER AND NFI IN NORTHWEST SYRIA (NWS)

5,445 SYP Regional average monthly reported rent price in SYP across assessed communities.¹

5,819 SYP Northern Syria average monthly reported rent price in SYP across assessed communities.^{1,2}

Most commonly reported shelter type for pre-conflict population households:³



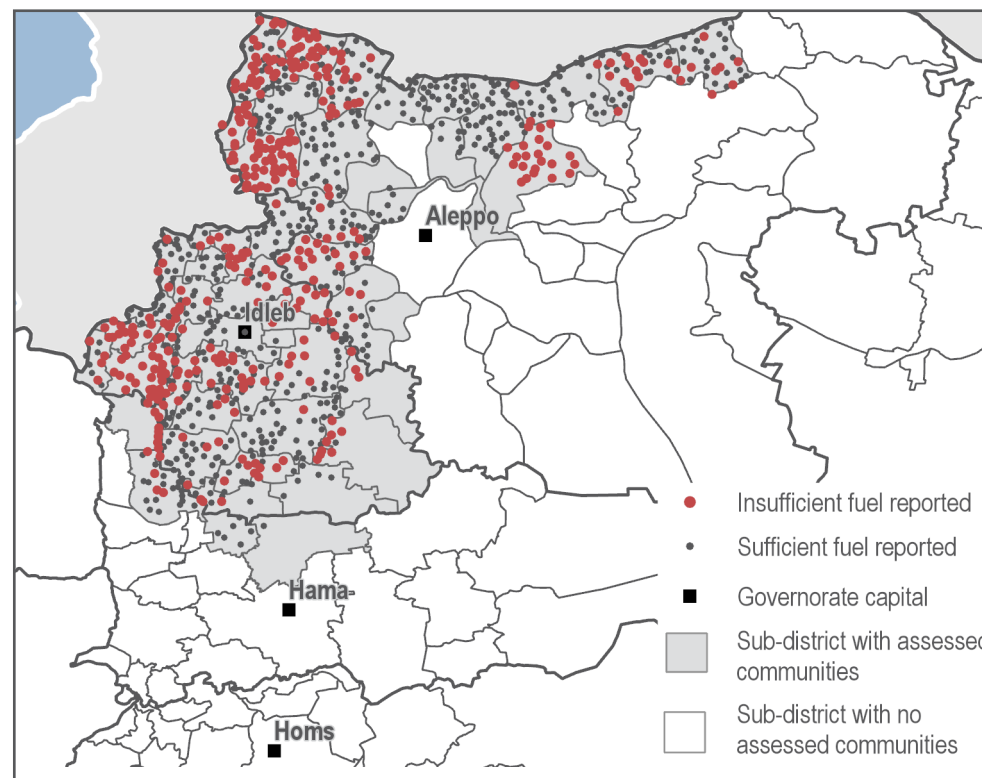
Most commonly reported shelter type for IDP households:³



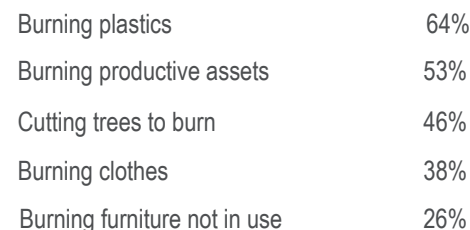
Reported fuel prices (in SYP):^{1,4}

Fuel type (1L):	Regional average price in March 2019:	One month change:	Six month change:
GoS petrol	288	-4%	+15%
GoS diesel	240	0%	+23%
Manually refined petrol	400	0%	-3%
Manually refined diesel	400	+14%	+10%
Cooking fuel	7,500	0%	+20%

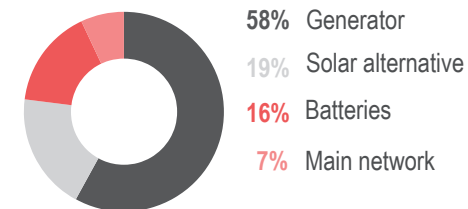
Communities that reported insufficient amounts of fuel to meet household needs:⁷



626 communities reported no lack of fuel. Most common strategies to cope with lack of fuel in the remaining 373 assessed communities:^{3,5,6}



Primary source of electricity reported:³



METHODOLOGY

HSOS data collection is conducted through an enumerator network in accessible locations throughout Idleb, Aleppo, northern Hama, Deir-ez-Zor, Ar-Raqqa, and Al-Hasakeh governorates. REACH enumerators are based inside Syria and interview Key Informants (KIs) directly in the community about which they are reporting. Where access and security constraints renders direct data collection unfeasible, some KI interviews are conducted remotely through participants identified in camps and settlements in neighbouring countries by REACH field teams. Participants contact multiple KIs in their community in Syria to collect information about their community. KIs are asked to report at the community level.

KIs generally included local council members, Syrian NGO workers, medical professionals, teachers, shop owners and farmers, among others, and were chosen based on their community-level or sector specific knowledge. In cases where KIs disagree on a certain piece of information, enumerators triangulate the data with secondary sources or select the response provided by the KI with the more relevant sector-specific background. For each question asked, confidence levels are assigned based on the KIs area of expertise and knowledge of the sector-specific situation. The confidence levels associated with each question are presented in the [final dataset](#). The full confidence matrix used to assign confidence levels is available upon request.

Findings are triangulated through secondary sources, including news monitoring and humanitarian reports. Where necessary, follow-up is conducted with enumerators and participants. Findings are indicative rather than representative, and should not be generalised across the region.

ENDNOTES

¹ 1 USD = 434 SYP (UN operational rates of exchange as of 1 December 2018). ² Includes HSOS data for Idleb, Aleppo, northern Hama, Deir-ez-Zor, Ar-Raqqa and Al-Hasakeh governorates. ³ By percentage of communities reporting. ⁴ 18 items comprise the Survival Minimum Expenditure Basket (SMEB), which represents the minimum culturally adjusted items required to support a 6-person household for a month. SMEB items: Bread, bulgur, chicken, eggs, fresh vegetables, ghee/vegetable oil, red lentils, rice, salt, sugar, tomato paste, bathing soap, laundry/dish soap, sanitary pads, toothpaste, cooking fuel, water trucking, smartphone data, float (other costs). ⁵ Assessed using select multiple questions. ⁶ Not all surveys have answers for every question, in these scenarios the KI or participant will input no answer. When the dataset has no answer for a particular question the reported number of assessed communities will not add up to the total number of communities assessed and percentages will be calculated based on submitted responses. ⁷ Based on KI perception of sufficiency.

About REACH

REACH facilitates the development of information tools and products that enhance the capacity of aid actors to make evidence-based decisions in emergency, recovery and development contexts. The methodologies used by REACH include primary data collection and in-depth analysis, and all activities are conducted through inter-agency aid coordination mechanisms. REACH is a joint initiative of IMPACT Initiatives, ACTED and the United Nations Institute for Training and Research - Operational Satellite Applications Programme (UNITAR-UNOSAT). For more information please visit our website: www.reach-initiative.org. You can contact us directly at: geneva@reach-initiative.org and follow us on Twitter @ [REACH info](#).