

# DAMAGE ASSESSMENT OF DARAA, DARAA GOVERNORATE, SYRIA

Analysis with Pleiades, WorldView-2 and WorldView-1 Data Acquired 04 June 2015, 01 May 2014, 07 September 2013 and 14 December 2010

This map illustrates satellite-detected damage in the city of Daraa, Syrian Arab Republic. Using satellite imagery acquired 04 June 2015, 01 May 2014, 07 September 2013, and 14 December 2010, UNITAR - UNOSAT identified a total of 936 affected structures within the extent of this map. Approximately 122 of these were destroyed, 355 severely damaged, and 459 moderately damaged. The city-wide analysis of Daraa revealed a total of 966 affected structures, of

which 133 were destroyed, 365 severely damaged, and 468 moderately damaged. Trend analysis shows an important increase in the number of damaged structures since 01 May 2014 and more than 600 structures are newly damaged. This analysis was done of the REACH initiative for the U.S. Office of Foreign Disaster Assistance. This is a preliminary analysis and has not yet been validated in the field. Please send ground feedback to UNITAR - UNOSAT.

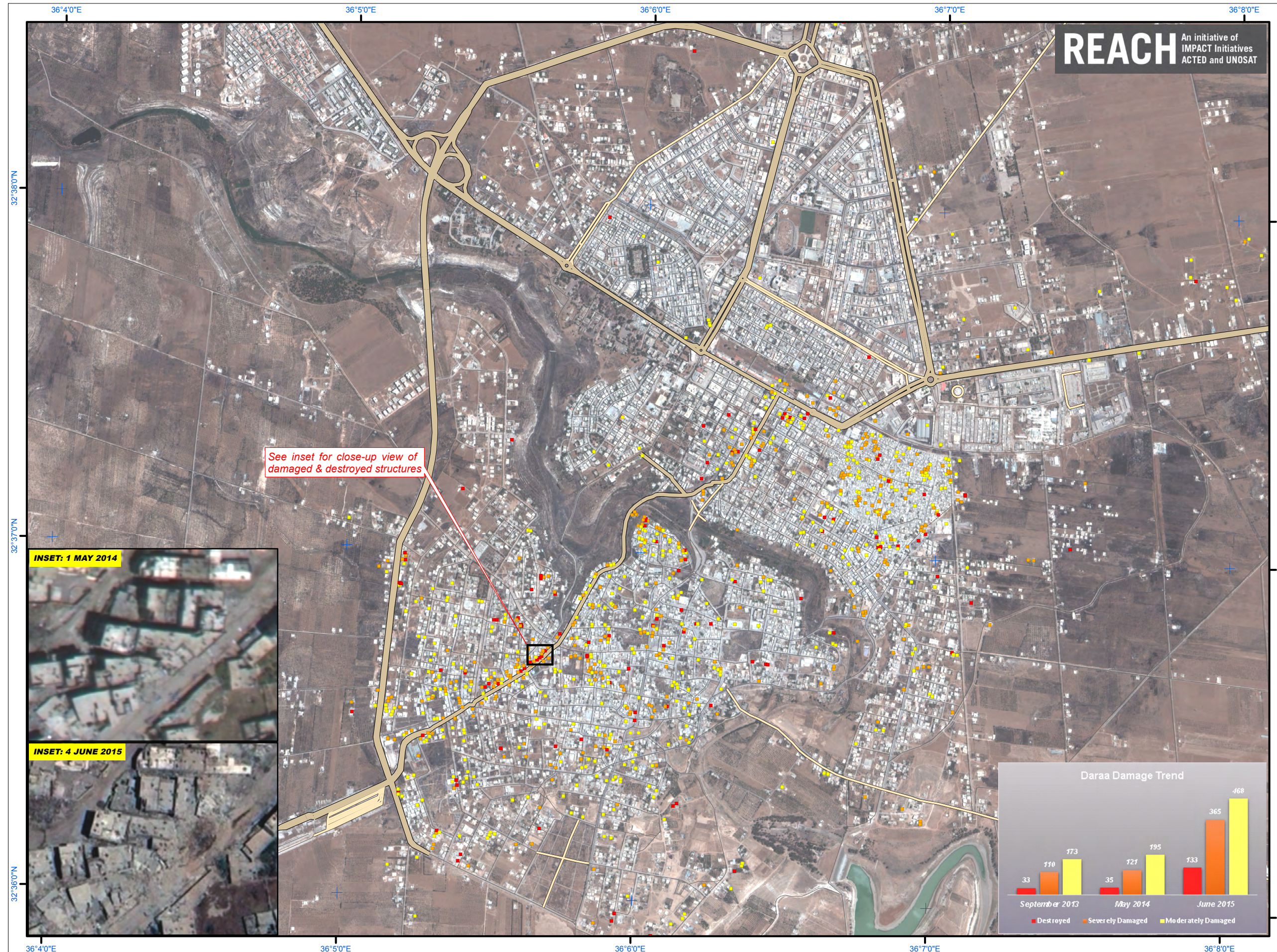
**Complex Emergency**



Production Date: 7/9/2015

Version 1.0

Activation Number: CE20130604SYR



See inset for close-up view of damaged & destroyed structures

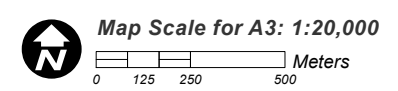
INSET: 1 MAY 2014

INSET: 4 JUNE 2015

**REACH** An initiative of IMPACT Initiatives ACTED and UNOSAT



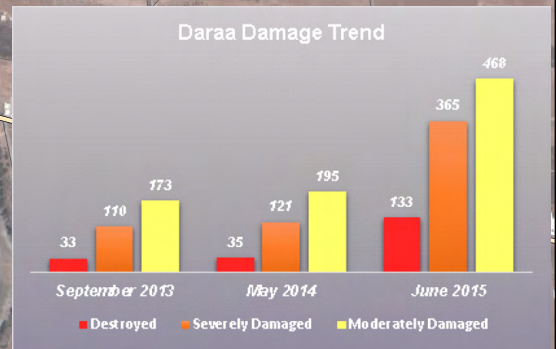
- LEGEND**
- Destroyed
  - Severely Damaged
  - Moderately Damaged
  - Highway / Primary Road
  - Secondary Road
  - Local / Urban Road



Satellite Data (1): Pleiades  
 Imagery Dates: 4 June 2015  
 Resolution: 50 cm  
 Copyright: © CNES (2015), Distribution AIRBUS DS  
 Source: Airbus Defense and Space  
 Satellite Data (2): WorldView-2  
 Imagery Dates: 01 May 2014 & 07 September 2013  
 Resolution: 50 cm  
 Copyright: DigitalGlobe  
 Sources: US Department of State, Humanitarian Information Unit, NextView License, European Space Imaging  
 Satellite Data (3): WorldView-1  
 Imagery Date: 14 December 2010  
 Resolution: 50 cm  
 Copyright: DigitalGlobe  
 Source: European Space Imaging  
 Road Data: OSM  
 Other Data: USGS, UNCS, NASA, NGA  
 Analysis: UNITAR / UNOSAT  
 Production: UNITAR / UNOSAT  
 Analysis conducted with ArcGIS v10.3  
 Coordinate System: WGS 1984 UTM Zone 37N  
 Projection: Transverse Mercator  
 Datum: WGS 1984  
 Units: Meter

The depiction and use of boundaries, geographic names and related data shown here are not warranted to be error-free nor do they imply official endorsement or acceptance by the United Nations. UNOSAT is a program of the United Nations Institute for Training and Research (UNITAR), providing satellite imagery and related geographic information, research and analysis to UN humanitarian and development agencies and their implementing partners.

This work by UNITAR/UNOSAT is licensed under a Creative Commons Attribution-NonCommercial-ShareAlike 3.0 Unported License.



**UNOSAT**

Contact Information: [unosat@unitar.org](mailto:unosat@unitar.org)  
 24/7 Hotline: +41 76 487 4998  
[www.unitar.org/unosat](http://www.unitar.org/unosat)