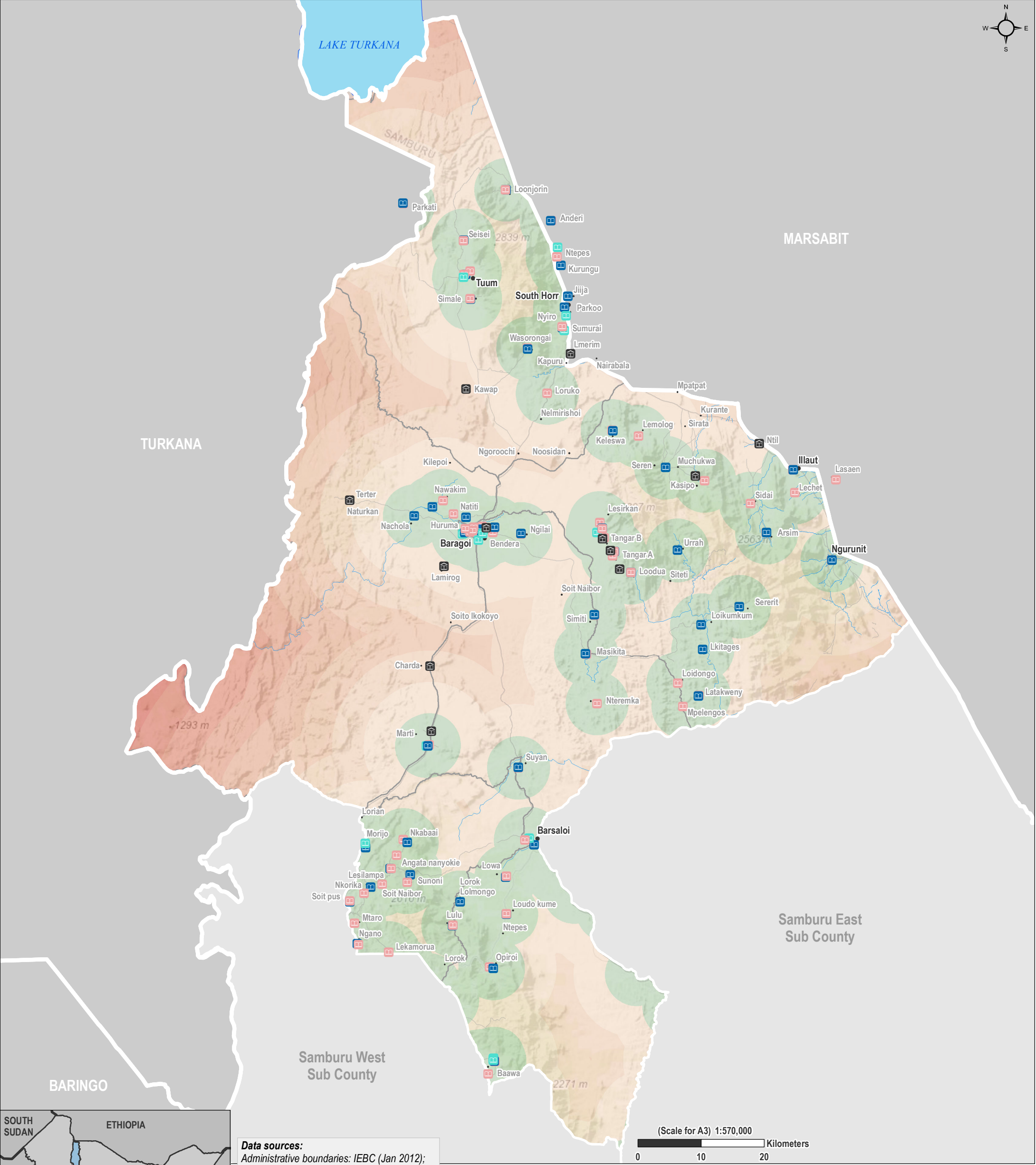


# KENYA – Samburu County Infrastructure and Service Mapping

## Samburu North Sub-County – Access to Education – As of 21 December 2019

For Humanitarian Purposes Only  
Production date: 4 May 2020



**Data sources:**  
Administrative boundaries: IEBC (Jan 2012);  
Settlements: REACH (Dec 2019);  
Infrastructure: REACH (Dec 2019);  
Roads: ©OpenStreetMap Contributors (Jan 2020);  
Hydrology: Digital Chart of the World, ©OpenStreetMap Contributors (Jan 2020);  
Elevation base layer: ESRI layer  
Coordinate System: GCS WGS 1984  
**File:** reach\_ken\_map\_samburunorth\_access\_to\_education\_December2019\_a3\_potrait

**Note:** Data, designations and boundaries contained on this map are not warranted to be error-free and do not imply acceptance by the REACH partners, associates, donors or any other stakeholder mentioned on this map.

### Education Infrastructure

- Early childhood development (ECD) (63)
- Primary (50)
- Secondary (15)
- School not functioning (12)

### Mapped settlements

- Major
- Small

### Roads

- Primary
- Other

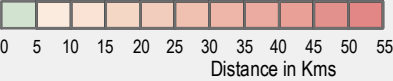
### Natural features

- River
- Stream
- Water body

### Administrative boundaries

- Ward
- Sub-County
- County
- International

### Access to functioning school



Funded by:



**USAID**  
FROM THE AMERICAN PEOPLE

**REACH** An initiative of  
IMPACT Initiatives  
ACTED and UNOSAT