

SYRIA MARKET MONITORING EXERCISE

Snapshot: 9 - 16 September 2019

Cash-Based Responses
Technical Working Group

REACH Informing
more effective
humanitarian action

INTRODUCTION

To inform humanitarian cash programming, REACH, in partnership with the Cash-Based Responses Technical Working Group (CBR-TWG), conducts monthly market monitoring exercises throughout Syria to assess the availability and prices of 36 basic commodities that are typically sold in markets and consumed by average Syrian households, including food and non-food items, water, fuel, and cellphone data.

Of these, 18 items comprise the Survival Minimum Expenditure Basket (SMEB; see below), which represents the minimum, culturally adjusted items required to support a 6-person household for a month.

Data was collected this month (between 9-16 September) by ACTED, CARE Shafak, Concern, GOAL, IRC, Mercy Corps, People in Need, REACH, SARD, Solidarités International, STC Shafak, Violet, and Watan.

The accompanying [dataset from the month of September](#) is disseminated monthly and is distributed through partners across the humanitarian community.

SURVIVAL MINIMUM EXPENDITURE BASKET (SMEB) CONTENTS

	Item	Quantity	
Food Items	Bread	37 kg	
	Bulgur	15 kg	
	Chicken	6 kg	
	Eggs	6 kg	
	Fresh vegetables	12 kg	
	Ghee/vegetable oil	7 kg/L	
	Red lentils	15 kg	
	Rice	19 kg	
	Salt	1 kg	
	Sugar	5 kg	
	Tomato paste	6 kg	
	Hygiene items	Bathing soap	12 bars
		Laundry/dish soap	3 kg
Sanitary pads		4 packs of 10	
Toothpaste		200 g	
Fuel	Cooking fuel*	25 L	
Water	Water trucking	4500 L	
Telecom	Smartphone data	1 GB	
Other	Float (other costs)**	7.5% total value	

* Kerosene in northern Syria

** Float only applied to observations where prices of all SMEB contents could be collected

KEY DEVELOPMENTS

Winterisation items

This month, REACH and partners started to collect data on various winterisation items (heaters, plastic sheets, mattresses, winter blankets and clothing items). In the northwest, items are starting to become available in the markets, though in limited quantity as the weather is hot and shops prefer to display summer items. Vendors are starting to stock up on items and are reportedly expecting to sell these by mid-October for the northwest and by early November in the northeast. According to vendors, items are expected to be sold at higher prices than last year, which might result in some winterisation items being unaffordable for many people across both regions. The prices of winterisation items in September [can be found here](#).

Northwest SMEB cost increase

The SMEB cost increased by 7% from 63,000 SYP to 67,681 SYP from August to September. The increase was reportedly mainly due to prices of bulk foods increasing, coupled with further inflation of the Syrian Pound against foreign currencies. In USD, the SMEB cost increased by 2% from 104 to 107 USD.

Northeast SMEB cost increase

In September, the SMEB cost increased in the northeast by 8% from 73,701 SYP to 79,950 SYP, which is the highest price ever recorded by the Market Monitoring Exercise. In USD, it equally increased by 8% from 120 to 131 USD. The increase was mainly driven by further inflation of the Syrian Pound, higher fuel prices, and a

sharp increase in the price of flour, soap items as well as bulk food items.

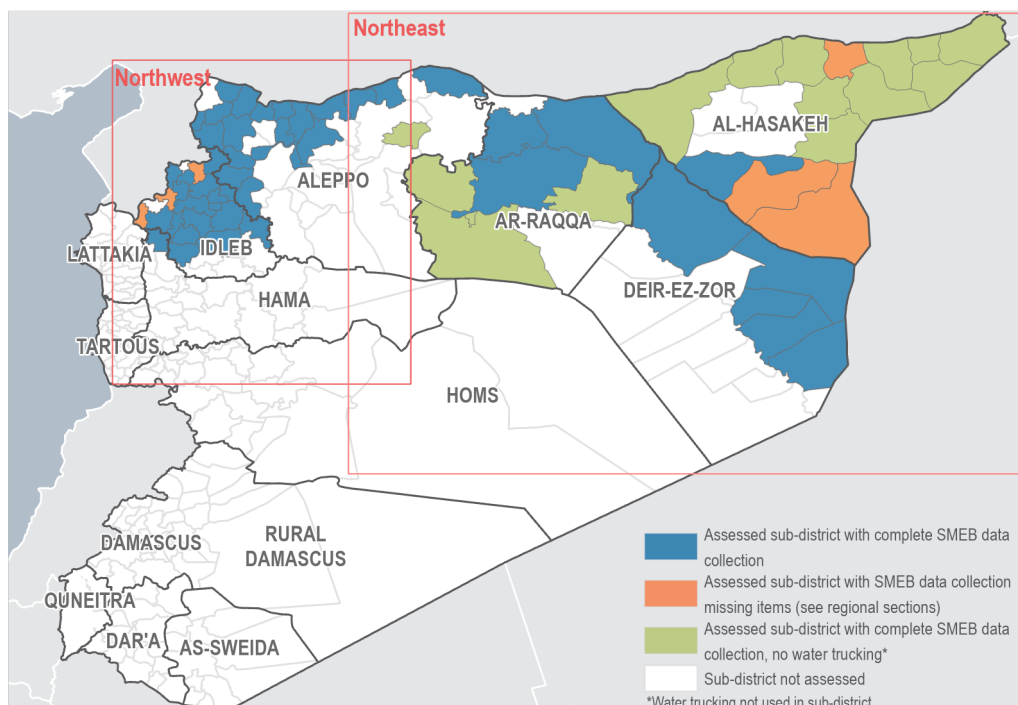
USD/SYP exchange rate highest recorded under Market Monitoring Exercise

During data collection week, the USD/SYP informal exchange rate saw fluctuations, with the highest rate recorded at 674 SYP in Qourqeena sub-district in the Idlib governorate. Ultimately, the median price of the USD/SYP exchange rate increased by 5% in the northwest from 602 SYP to 630 SYP, while remaining stable in the northeast at 615 SYP.

Expansion of coverage

In September, REACH and partners expanded coverage for the Market Monitoring, which now covers 230 communities across the north of Syria.

ASSESSED AREAS AND COVERAGE

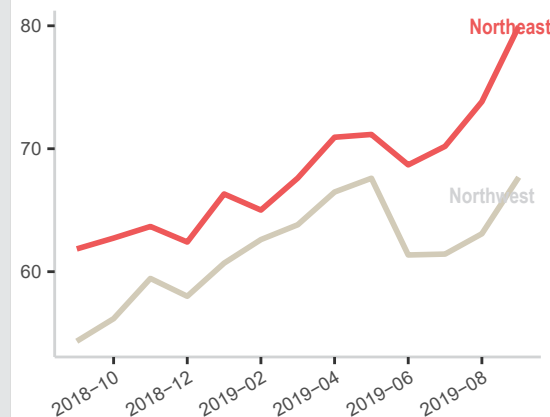


MEDIAN SMEB COST IN SYP (USD), BY REGION

67,681 SYP (107 USD)	NORTHWEST SYRIA - NORTHERN HAMA, IDLEB, WESTERN & NORTHERN ALEPPO
79,950 SYP (131 USD)	NORTHEAST SYRIA - AL-HASAKEH, AL-RAQQA, DEIR-EZ-ZOR & EASTERN ALEPPO GOVERNORATES

MEDIAN SMEB COSTS, BY MONTH & REGION

Thousand Syrian Pounds



KEY DEVELOPMENTS

67,681 SYP
(107 USD)

NORTHWEST SYRIA - NORTHERN HAMA, IDLEB, WESTERN & NORTHERN ALEPPO GOVERNORATES

Sharp increase in bulk food prices

September witnessed increases in the price of many bulk food items such as bulgur (12%), rice (14%), lentils (9%), chickpeas (6%), green peas (12%), pasta (15%) and canned fish (10%). This was reportedly due to the further depreciation of the Syrian Pound against the US Dollar, as the majority of these items are imported and thus bought by vendors in either US Dollars or Turkish Lira and later re-sold to communities in Syrian Pounds. The increase was reportedly also due to people buying more products with long shelf lives in preparation for winter.

Increase in the price of flour

The price of 1 kilo of flour increased from 200-225 SYP, amounting to a 13% increase from August to September at the regional level. This is reportedly due to further inflation of the Syrian Pound against foreign currencies, as some flour types are imported into the northwest.

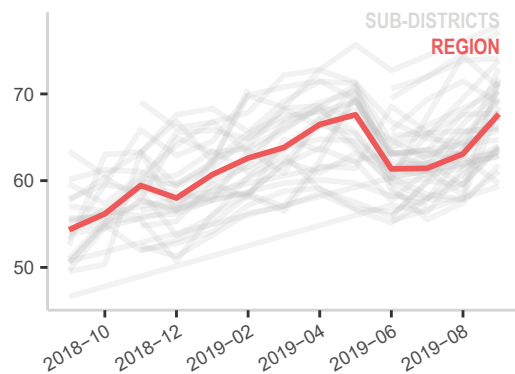
This, coupled with the escalation of conflict and the rise of the number of IDPs, have likely driven the recent increase in flour witnessed in the past months across the region. Sub-districts such as Tefnaz, Ma'arrat An Nu'man, Kafr Nobol, Dana, Armanaz, Jisr-Ash-Shugur all witnessed an increase of more than 25%, of which the majority are also hosting increasing numbers of IDPs, leading to an increase in demand and thus also in prices.

Price of soap items increasing across the northwest

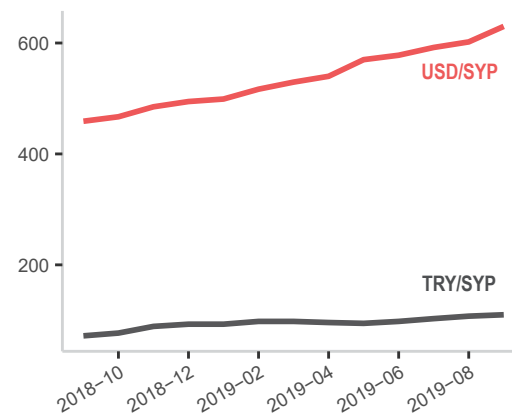
In September, the SMEB NFI soap component increased by 26% from 1,011 SYP to 1,275 SYP. The increase was recorded across all three monitored soap items: personal soap (17%), laundry soap (22%) and dishwashing soap (3%). The increase was reportedly due to an increased demand across sub-districts coupled with the lack of available raw material for the production of personal soap, which is traditionally produced inside of Syria.

MEDIAN SMEB COSTS, BY MONTH

Thousand Syrian Pounds



EXCHANGE RATES, BY MONTH & CURRENCY



MEDIAN SMEB COSTS & CHANGES*

Syrian Pounds

Sub-district	SMEB	One month change	Six month change
Northwest Syria	66,921	6%	0%
Abul Thohur	63,774	4%	NA
Afrin	77,179	NA	NA
Aghtrin	67,593	NA	NA
Al Bab	62,799	NA	-5%
Ariha	66,071	4%	4%
Armanaz	67,881	NA	9%
Ar-Ra'ee	63,508	NA	9%
Atareb	68,845	4%	3%
A'zaz	70,748	-5%	3%
Badama	NA	NA	NA
Bennsh	67,931	8%	2%
Bulbul	59,362	NA	NA
Dana	63,915	3%	-7%
Daret Azza	69,872	9%	-2%
Darkosh	NA	NA	NA
Ehsem	69,543	10%	2%
Ghadorah	59,693	NA	-3%
Haritan	62,912	2%	NA

Sub-district	SMEB	One month change	Six month change
Idlib	68,932	-4%	NA
Jandairis	65,838	NA	NA
Jarablus	66,002	NA	NA
Jisr-Ash-Shugur	64,314	6%	-6%
Kafr Nobol	71,818	18%	11%
Kafr Takharim	71,382	5%	5%
Maaret Tamsrin	63,941	6%	8%
Ma'arrat An Nu'man	71,410	20%	9%
Ma'btali	70,297	NA	-3%
Mare'	73,832	NA	NA
Mhambal	74,094	0%	NA
Qourqeena	NA	NA	NA
Salqin	68,811	2%	NA
Saraqab	66,248	1%	-3%
Sarmin	70,189	5%	NA
Sharan	64,750	NA	-4%
Sheikh El-Hadid	77,868	NA	7%
Suran	65,888	7%	-8%
Tefnaz	66,138	14%	-7%
Zarbah	61,821	8%	NA
Ziyara	61,060	6%	6%

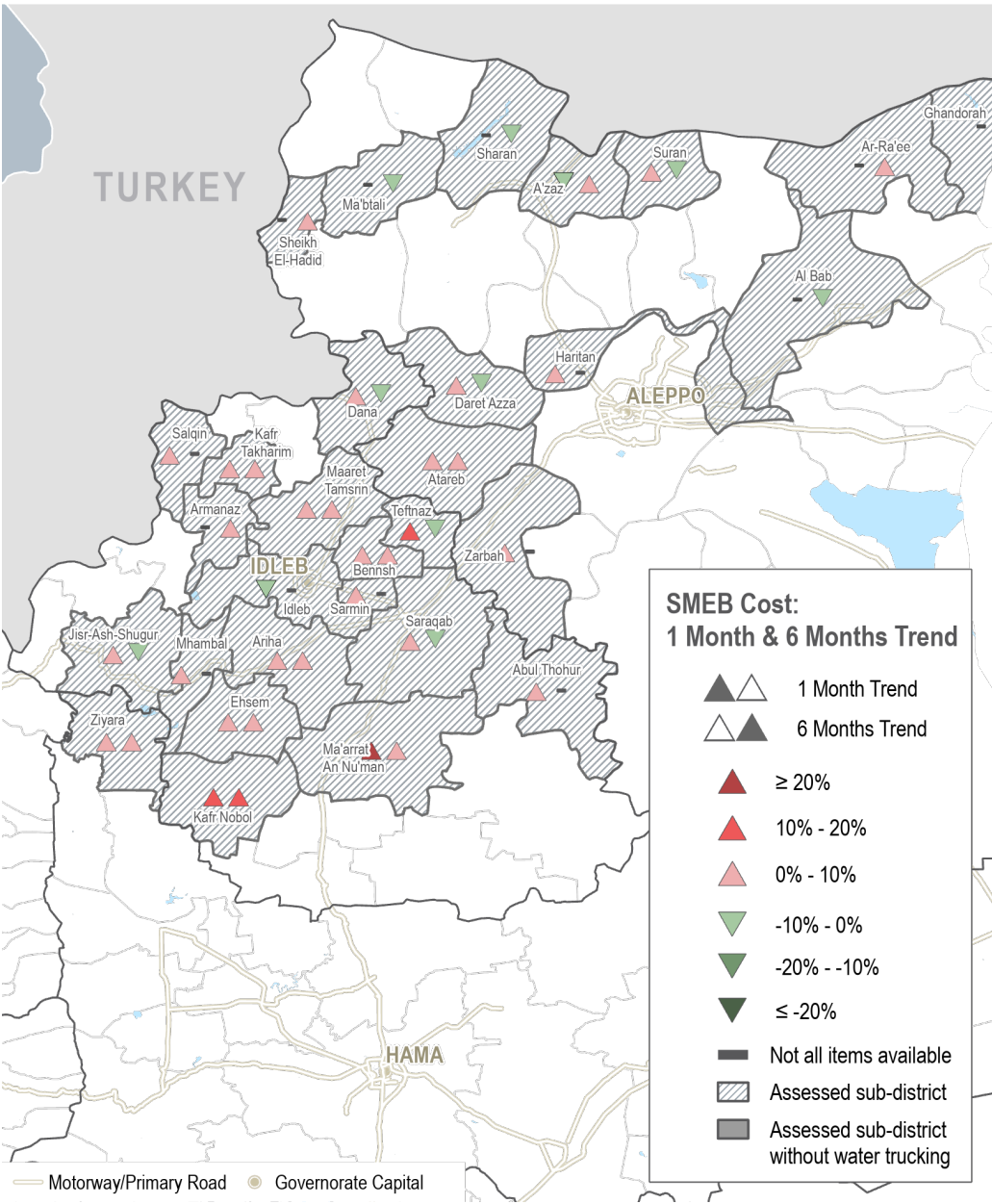
* For price and change calculations, only the communities within a sub-district with consistent coverage across months are included.

SUB-DISTRICTS WITH INCOMPLETE SMEB IN SEPTEMBER

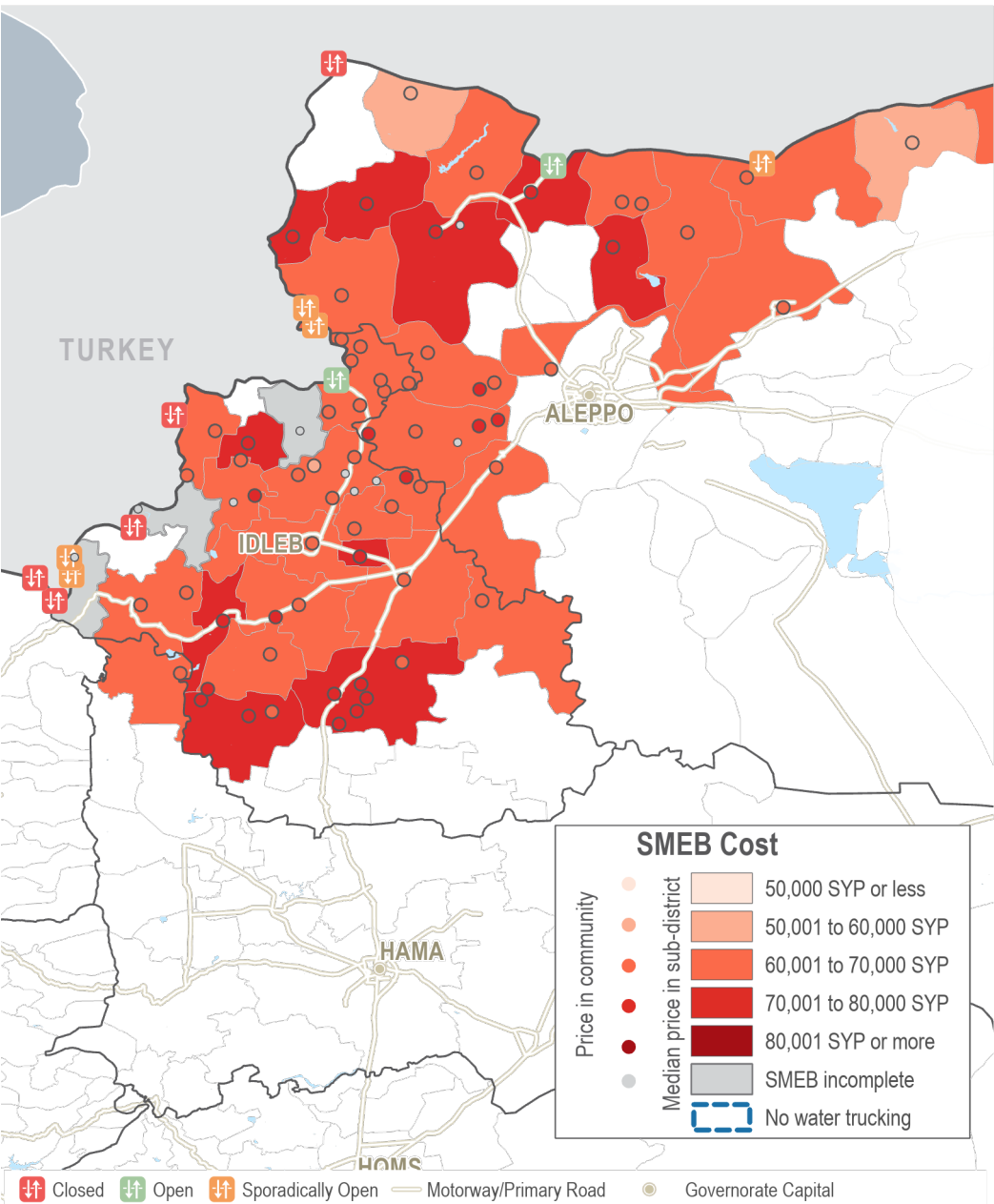
SUB-DISTRICT	MISSING ITEMS
Qourqeena	Soap items, tooth paste, sanitary pads, split lentils
Badama	Toothpaste, tomato paste
Darkosh	Bread

Note: Lack of data for a SMEB item does not necessarily imply a shortage.

SMEB COST: ONE MONTH & SIX MONTHS TREND



SMEB COST RANGES (SYP), BY SUB-DISTRICTS & COMMUNITIES



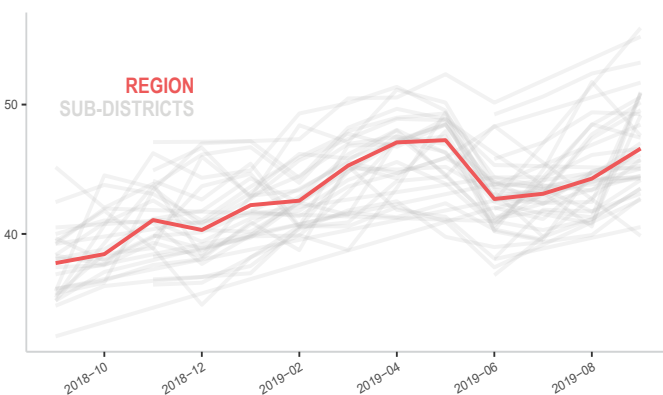
MEDIAN SMEB COST: FOOD ITEMS

See Page 1, Syrian Pounds

Sub-district	SMEB Food	One month change	Six month change	Sub-district	SMEB Food	One month change	Six month change
Northwest Syria	46,270	5%	-2%	Idleb	47,438	-2%	NA
Abul Thohur	44,318	0%	NA	Jandairis	45,045	NA	NA
Afrin	51,700	NA	16%	Jarablus	45,052	NA	-4%
Aghtrin	45,753	NA	NA	Jisr-Ash-Shugur	44,295	6%	-8%
Al Bab	44,500	NA	-6%	Kafr Nobol	50,985	19%	14%
Ariha	45,966	0%	1%	Kafr Takharim	49,570	5%	1%
Armanaz	48,040	NA	10%	Maaret Tamsrin	43,395	2%	4%
Ar-Ra'ee	42,650	NA	1%	Ma'arrat An Nu'man	50,875	22%	13%
Atareb	49,184	2%	3%	Ma'btali	48,443	NA	-5%
A'zaz	47,594	-8%	1%	Mare'	55,925	NA	NA
Badama	NA	NA	NA	Mhambal	53,250	2%	NA
Bennsh	47,013	6%	1%	Qourqeena	45,680	2%	11%
Bulbul	40,528	NA	NA	Salqin	49,800	2%	NA
Dana	44,793	2%	-8%	Saraqab	46,085	3%	-3%
Daret Azza	46,660	8%	-6%	Sarmin	50,570	4%	NA
Darkosh	NA	NA	NA	Sharan	45,265	NA	-4%
Ehsem	47,616	13%	1%	Sheikh El-Hadid	55,250	NA	9%
Ghandorah	39,852	NA	-10%	Suran	46,270	11%	-10%
Haritan	44,286	1%	NA	Teftnaz	46,989	15%	-4%
				Zarbah	43,513	6%	NA
				Ziyara	42,755	7%	5%

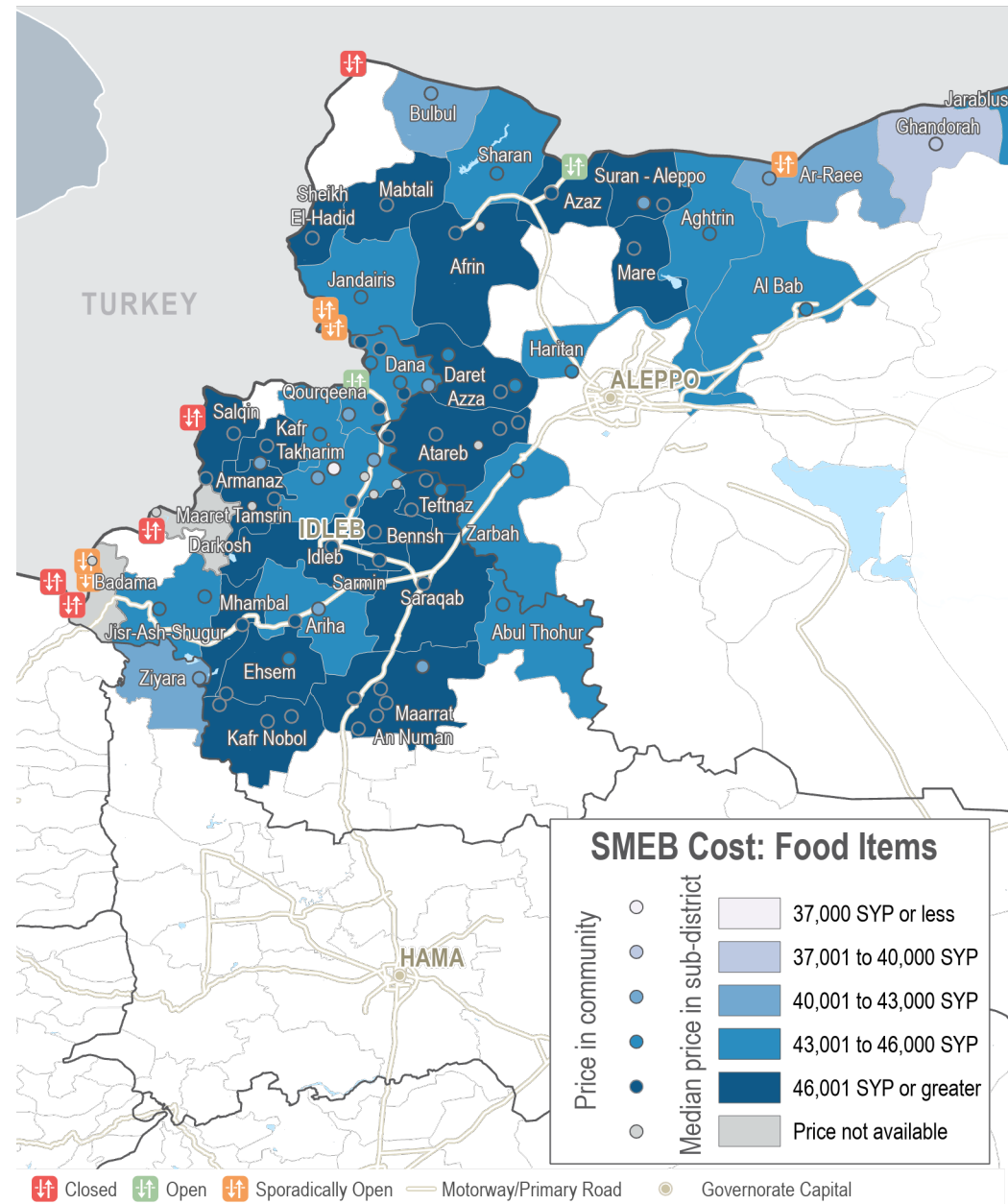
MEDIAN SMEB COST: FOOD ITEMS, BY MONTH

Region (red) and Sub-districts (grey), Thousand Syrian Pounds



SMEB FOOD ITEMS' COST

Sub-districts & Communities, Syrian Pounds



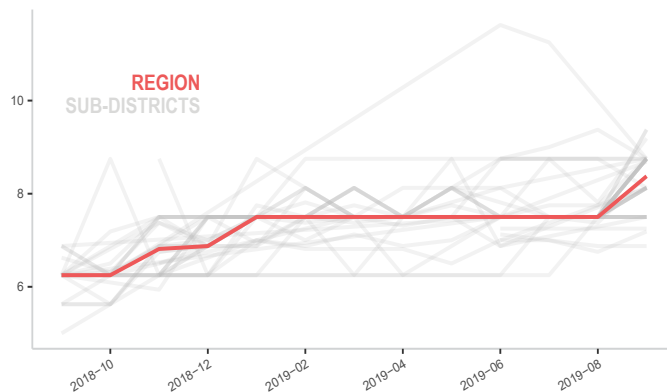
MEDIAN SMEB COOKING FUEL PRICE

Kerosene 25L, Syrian Pounds

Sub-district	SMEB Cooking Fuel	One month change	Six month change	Sub-district	SMEB Cooking Fuel	One month change	Six month change
Northwest Syria	8,375	12%	12%	Idlib	8,750	-13%	NA
Abul Thohur	9,375	25%	NA	Jandairis	7,500	NA	NA
Afrin	8,125	NA	8%	Jarablus	7,500	NA	20%
Aghtrin	7,500	NA	NA	Jisr-Ash-Shugur	9,188	13%	23%
Al Bab	7,500	NA	0%	Kafr Nobol	8,750	17%	17%
Ariha	8,750	17%	17%	Kafr Takharim	8,125	8%	8%
Armanaz	8,125	8%	8%	Maaret Tamsrin	8,375	16%	12%
Ar-Ra'ee	8,688	NA	26%	Ma'arrat An Nu'man	8,750	17%	8%
Atareb	7,969	6%	7%	Ma'bтали	8,750	NA	0%
A'zaz	8,125	8%	8%	Mare'	7,250	NA	NA
Badama	8,125	8%	NA	Mhambal	8,750	-7%	NA
Bennsh	9,188	18%	23%	Qourqeena	8,750	17%	17%
Bulbul	8,125	NA	NA	Salqin	7,188	3%	NA
Dana	7,500	3%	0%	Saraqab	8,125	-7%	8%
Daret Azza	8,750	17%	17%	Sarmin	8,750	17%	NA
Darkosh	8,750	17%	17%	Sharan	8,750	NA	17%
Ehsem	9,063	12%	22%	Sheikh El-Hadid	8,750	NA	17%
Ghandorah	7,500	NA	0%	Suran	7,500	0%	3%
Haritan	8,125	8%	NA	Teftnaz	8,750	17%	8%
				Zarbah	8,750	17%	NA
				Ziyara	6,875	0%	-1%

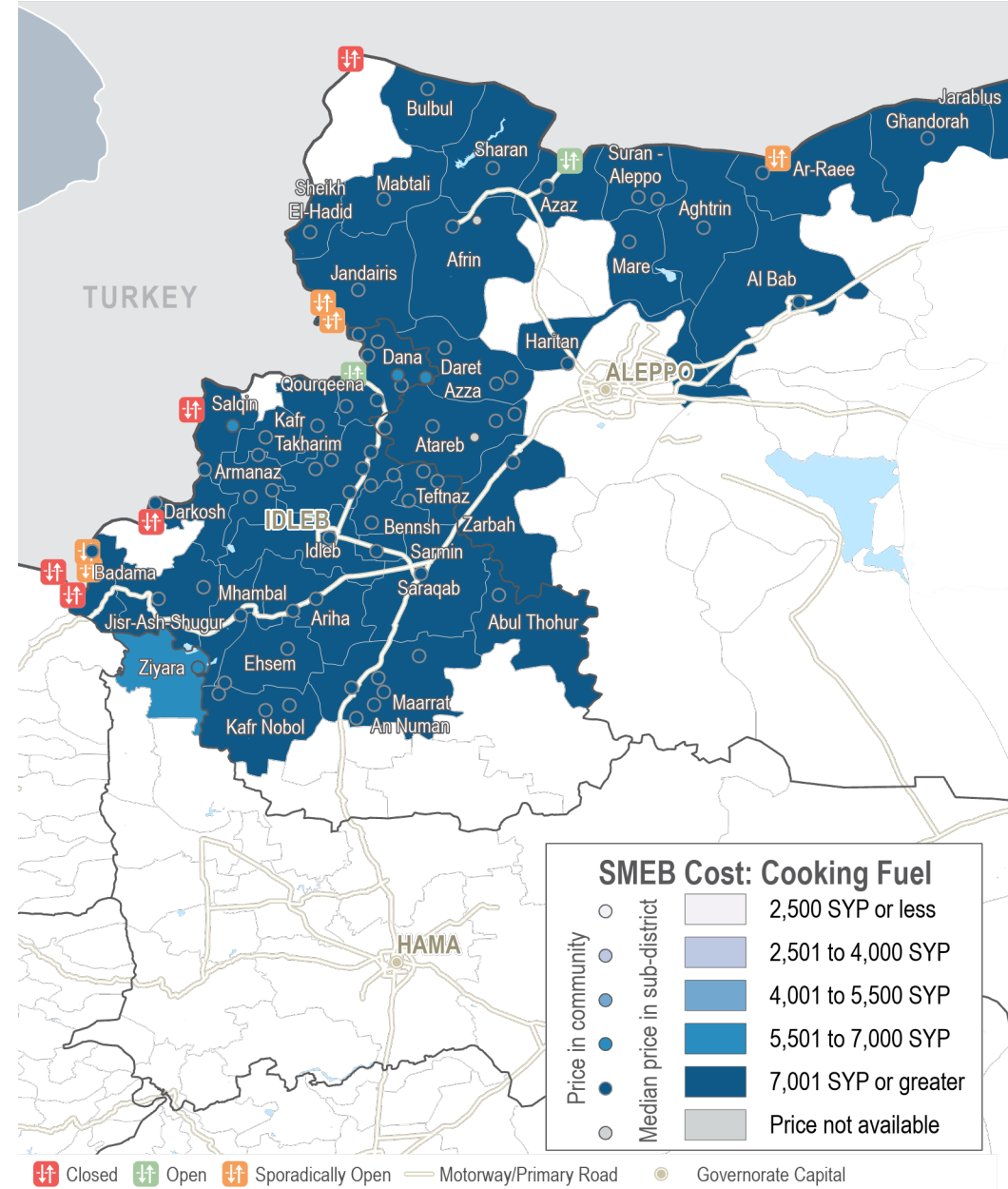
MEDIAN SMEB COOKING FUEL COSTS, BY MONTH

Region (red) and Sub-districts (grey), Thousand Syrian Pounds



SMEB COOKING FUEL COST

Sub-districts & Communities, Syrian Pounds



NORTHWEST SYRIA - SMEB WATER TRUCKING

Northern Hama, Idlib, Western & Northern Aleppo

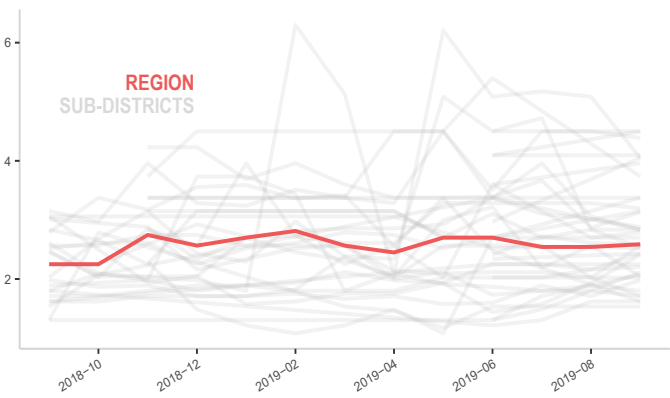
MEDIAN SMEB WATER TRUCKING PRICE

4,500L, Syrian Pounds

Sub-district	SMEB Water Truck	One month change	Six month change	Sub-district	SMEB Water Truck	One month change	Six month change
Northwest Syria	2,655	4%	2%	Idlib	2,835	-7%	NA
Abul Thohur	1,620	0%	NA	Jandairis	4,500	NA	NA
Afrin	3,735	NA	-17%	Jarablus	4,095	NA	NA
Aghtrin	4,050	NA	NA	Jisr-Ash-Shugur	2,520	-1%	-18%
Al Bab	3,375	NA	0%	Kafr Nobol	2,835	0%	16%
Ariha	2,295	19%	31%	Kafr Takharim	3,132	9%	22%
Armanaz	2,025	-21%	-1%	Maaret Tamsrin	2,610	27%	22%
Ar-Ra'ee	3,375	NA	127%	Ma'arrat An Nu'man	2,543	-10%	-19%
Atareb	2,633	56%	54%	Ma'b'tali	3,150	NA	0%
A'zaz	4,388	-3%	34%	Mare'	2,025	NA	NA
Badama	4,500	0%	NA	Mhambal	2,700	0%	NA
Bennsh	1,800	-5%	-10%	Qourqeena	1,534	0%	5%
Bulbul	2,430	NA	NA	Salqin	2,655	-2%	NA
Dana	2,475	10%	38%	Saraqab	2,790	3%	2%
Daret Azza	2,250	25%	8%	Sarmin	1,710	-5%	NA
Darkosh	1,710	-16%	-16%	Sharan	1,620	NA	-52%
Ehsem	3,431	-33%	-5%	Sheikh El-Hadid	2,835	NA	-37%
Ghandorah	3,960	NA	54%	Suran	2,891	-4%	1%
Haritan	2,250	0%	NA	Teftnaz	2,160	2%	-28%
				Zarbah	2,070	10%	NA
				Ziyara	3,195	-3%	20%

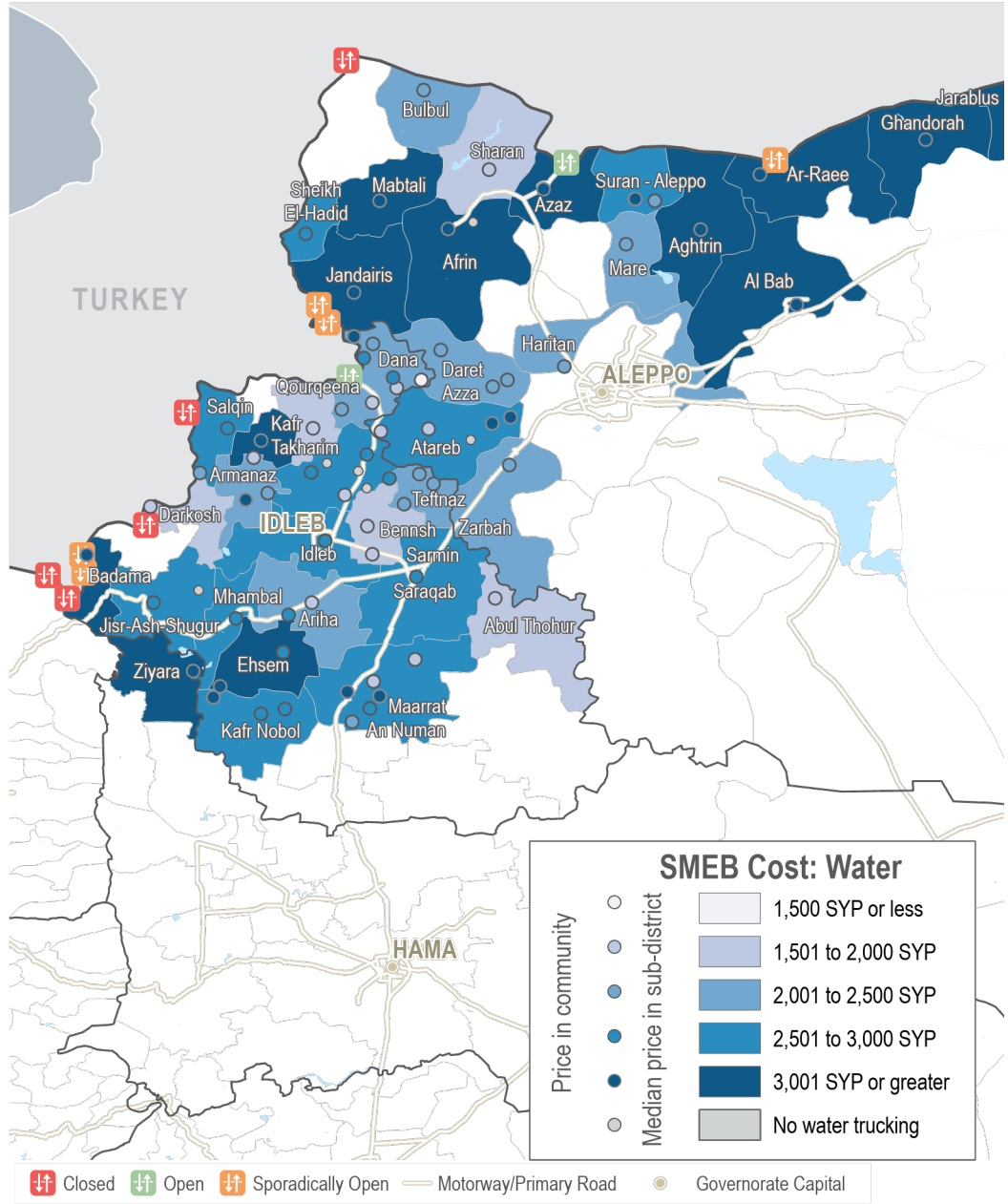
MEDIAN SMEB WATER TRUCKING COSTS, BY MONTH

Thousand Syrian Pounds Pounds



SMEB WATER TRUCKING COST

Sub-districts & Communities, Syrian Pounds



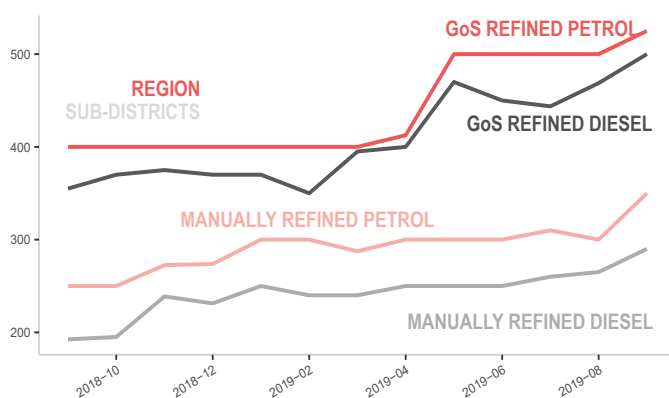
MEDIAN TRANSPORT FUEL PRICE

Diesel and Petrol, 1L (Government of Syria and Manually Refined), Syrian Pounds

Sub-district	SMEB Trans Fuel	One month change	Six month change	Sub-district	SMEB Trans Fuel	One month change	Six month change
Northwest Syria	388	3%	15%	Idleb	425	6%	NA
Abul Thohur	333	18%	NA	Jandairis	374	NA	NA
Afrin	359	NA	12%	Jarablus	313	NA	-2%
Aghtrin	288	NA	NA	Jisr-Ash-Shugur	458	23%	36%
Al Bab	295	NA	-7%	Kafr Nobol	425	11%	31%
Ariha	436	11%	27%	Kafr Takharim	419	11%	27%
Armanaz	348	5%	1%	Maaret Tamsrin	385	-5%	14%
Ar-Ra'ee	333	NA	22%	Ma'arrat An Nu'man	424	12%	27%
Atareb	444	17%	24%	Ma'btali	388	NA	19%
A'zaz	400	7%	19%	Mare'	388	NA	NA
Badama	388	2%	NA	Mhambal	320	-1%	NA
Bennsh	423	10%	23%	Qourqeena	425	20%	26%
Bulbul	363	NA	NA	Salqin	359	36%	NA
Dana	375	11%	23%	Saraqab	447	7%	30%
Daret Azza	422	30%	20%	Sarmin	413	10%	NA
Darkosh	387	46%	59%	Sharan	440	NA	55%
Ehsem	393	11%	15%	Sheikh El-Hadid	387	NA	19%
Ghandorah	325	NA	-13%	Suran	427	14%	22%
Haritan	308	8%	NA	Teftnaz	428	11%	20%
				Zarbah	408	7%	NA
				Ziyara	298	3%	-17%

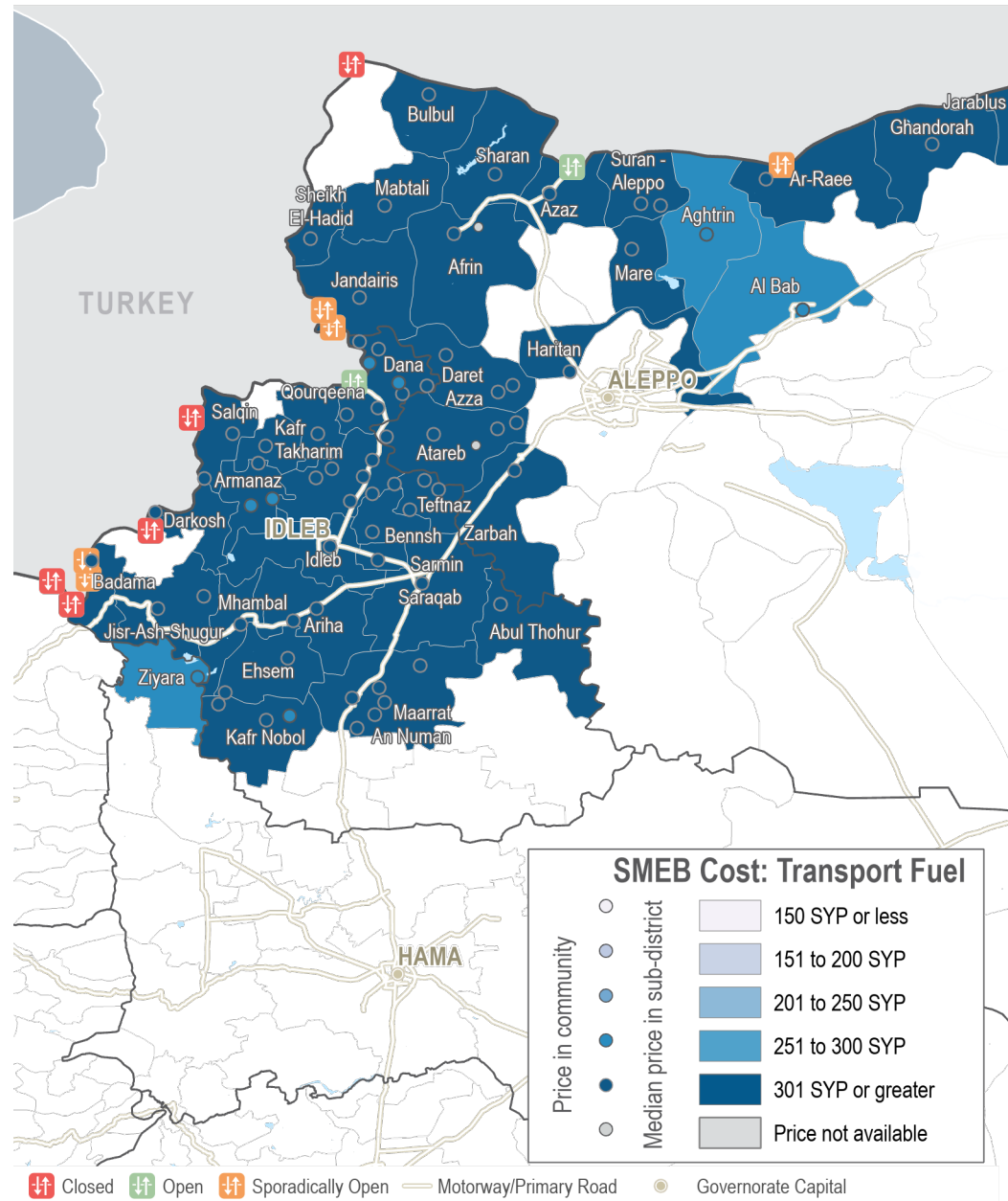
MEDIAN TRANSPORT FUEL COSTS, BY MONTH & TYPE

Syrian Pounds



TRANSPORT FUEL COST

Sub-districts & Communities, Syrian Pounds



NORTHWEST SYRIA - CELLPHONE DATA

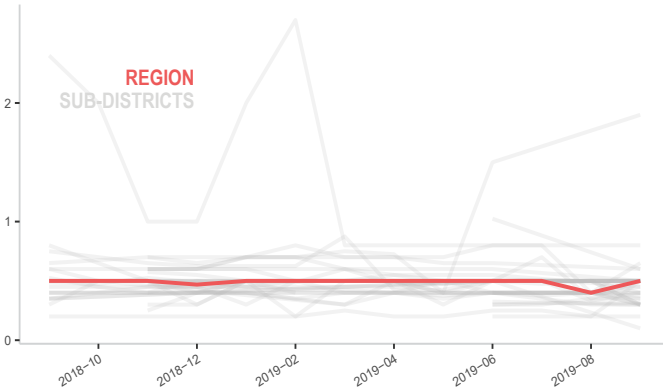
MEDIAN SMEB CELLPHONE DATA PRICE

1GB data, Syrian Pounds

Sub-district	SMEB Data (1GB)	One month change	Six month change	Sub-district	SMEB Data (1GB)	One month change	Six month change
Northwest Syria	481	20%	-4%	Idleb	300	-25%	NA
Abul Thohur	400	0%	NA	Jandairis	200	NA	NA
Afrin	1,950	NA	290%	Jarablus	500	NA	25%
Aghtrin	600	NA	NA	Jisr-Ash-Shugur	481	12%	7%
Al Bab	500	NA	-17%	Kafr Nobol	500	25%	-20%
Ariha	375	-6%	-6%	Kafr Takharim	500	0%	0%
Armanaz	300	-33%	-40%	Maaret Tamsrin	500	0%	0%
Ar-Ra'ee	800	NA	14%	Ma'arrat An Nu'man	500	25%	25%
Atareb	313	0%	-18%	Ma'btali	600	NA	-14%
A'zaz	650	63%	-19%	Mare'	100	NA	NA
Badama	400	-20%	NA	Mhambal	313	0%	NA
Bennsh	500	0%	5%	Qourqeena	400	20%	-20%
Bulbul	300	NA	NA	Salqin	400	0%	NA
Dana	300	-40%	-40%	Saraqab	350	-13%	-30%
Daret Azza	400	0%	0%	Sarmin	500	0%	NA
Darkosh	500	167%	150%	Sharan	450	NA	-18%
Ehsem	450	0%	-10%	Sheikh El-Hadid	500	NA	0%
Ghandorah	500	NA	0%	Suran	475	36%	12%
Haritan	500	0%	NA	Teftnaz	500	0%	-9%
				Zarbah	350	0%	NA
				Ziyara	500	0%	25%

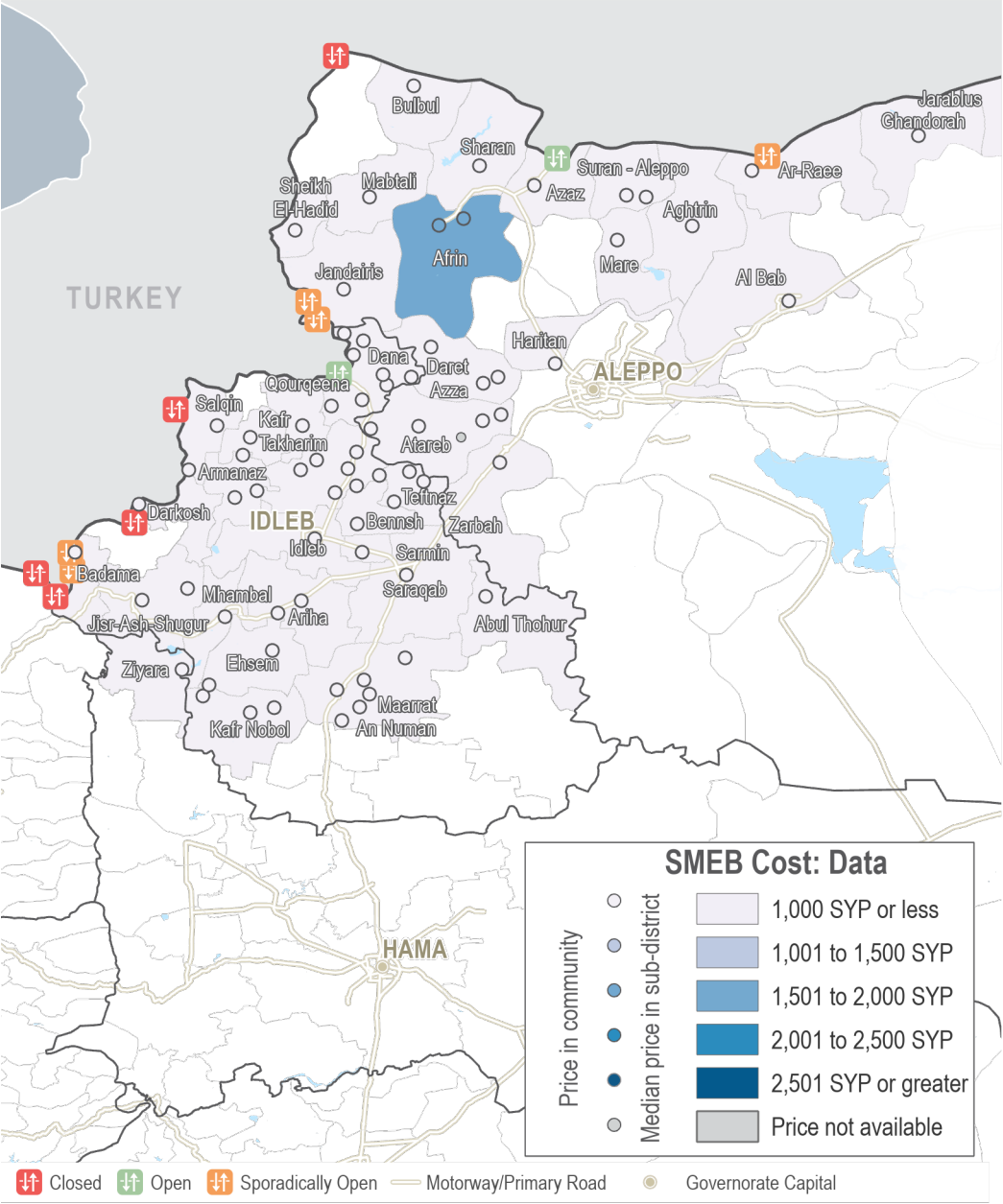
MEDIAN SMEB CELLPHONE DATA COST, BY MONTH

Thousand Syrian Pounds



SMEB CELLPHONE DATA COST

Sub-districts & Communities, Syrian Pounds



NORTHWEST SYRIA - SMEB HYGIENE ITEMS

Northern Hama, Idlib, Western & Northern Aleppo

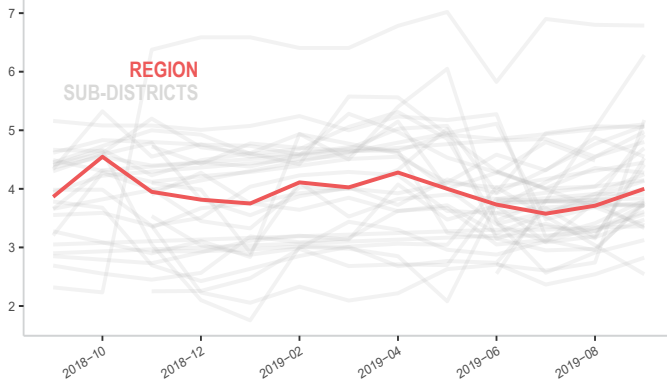
MEDIAN SMEB HYGIENE ITEMS' PRICE

12 bars of soap, 4 packs of 10 sanitary pads, 3kg of laundry/dish soap, 200g of toothpaste, Syrian Pounds

Sub-district	SMEB Hygiene Items	One month change	Six month change	Sub-district	SMEB Hygiene Items	One month change	Six month change
Northwest Syria	4,075	8%	-8%	Idlib	4,800	5%	NA
Abul Thohur	3,613	10%	NA	Jandairis	4,000	NA	NA
Afrin	6,284	NA	NA	Jarablus	4,250	NA	17%
Aghttrin	4,975	NA	NA	Jisr-Ash-Shugur	3,344	-7%	-27%
Al Bab	2,543	NA	-17%	Kafr Nobol	3,738	24%	-24%
Ariha	4,075	28%	0%	Kafr Takharim	5,075	6%	36%
Armanaz	4,655	18%	8%	Maaret Tamsrin	4,600	19%	61%
Ar-Ra'ee	3,564	NA	8%	Ma'arrat An Nu'man	3,760	27%	-6%
Atareb	3,944	8%	-26%	Ma'btali	4,450	NA	13%
A'zaz	5,056	0%	1%	Mare'	3,381	NA	NA
Badama	NA	NA	NA	Mhambal	3,913	0%	NA
Bennsh	4,692	16%	-6%	Qourqeena	NA	NA	NA
Bulbul	3,838	NA	NA	Salqin	3,968	0%	NA
Dana	4,389	11%	-17%	Saraqab	4,277	-2%	-23%
Daret Azza	6,938	2%	2%	Sarmin	3,762	2%	NA
Darkosh	5,175	89%	144%	Sharan	4,147	NA	8%
Ehsem	4,131	35%	-9%	Sheikh El-Hadid	5,100	NA	10%
Ghandorah	3,716	NA	37%	Suran	4,155	-15%	-9%
Haritan	3,362	1%	NA	Teftnaz	3,125	7%	-44%
				Zarbah	2,825	11%	NA
				Ziyara	3,475	10%	29%

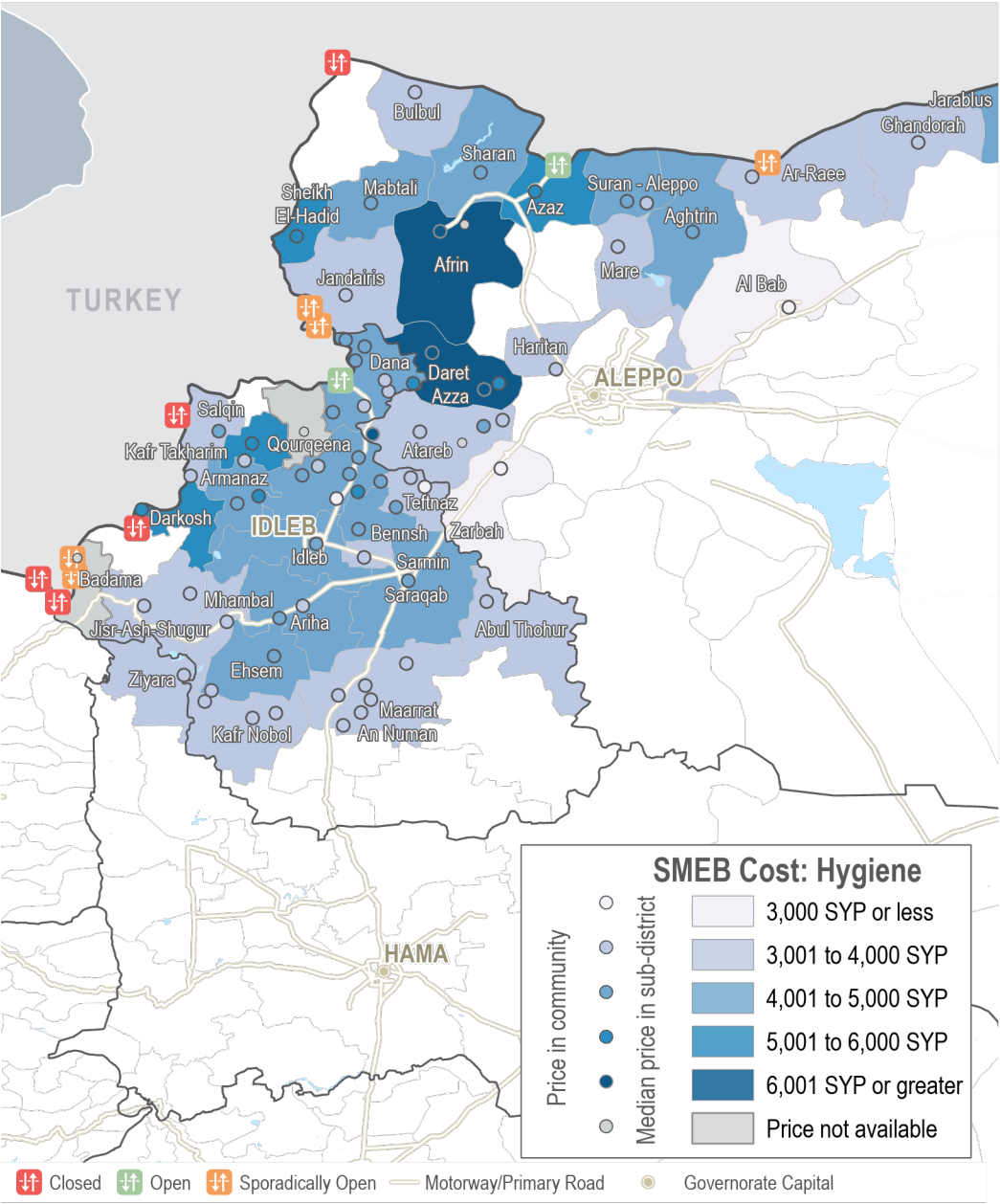
MEDIAN SMEB HYGIENE ITEMS' COSTS, BY MONTH

Thousand Syrian Pounds



SMEB HYGIENE ITEMS' COST

Sub-districts & Communities, Syrian Pounds



MEDIAN WINTERISATION ITEMS

Per 1 piece, Syrian Pounds

Sub-district	Jerry cans	Plastic sheets	Winter carpets	Kerosene/diesel heaters	Winter blanket	Mattress	Men's winter jacket	Women's winter jacket	Children's winter jacket	Men's winter boots	Women's winter boots	Children's winter boots	Adult hat	Children's hat
Northwest Syria	900	3,513	11,875	9,750	1,900	3,750	5,000	6,750	4,000	3,000	3,500	2,300	500	500
Abul Thohur	750	3,750	6,000	NA	750	2,000	NA	NA	NA	NA	NA	NA	NA	NA
Afrin	2,750	4,000	13,500	25,000	NA	4,000	NA	NA	NA	NA	NA	NA	NA	NA
Aghtrin	NA	5,000	7,000	NA	NA	5,000	NA	NA	NA	NA	NA	NA	NA	NA
Al Bab	1,000	2,500	45,000	22,000	1,500	2,500	NA	NA	NA	NA	NA	NA	NA	NA
Ariha	1,000	3,000	NA	NA	700	2,650	NA	NA	NA	NA	NA	NA	NA	NA
Armanaz	775	2,900	14,500	8,000	1,300	3,000	NA	7,500	4,000	4,500	3,750	3,000	NA	NA
Ar-Ra'ee	NA	NA	NA	NA	NA	3,750	NA	NA	NA	NA	NA	NA	NA	NA
Atareb	2,000	4,000	5,000	10,000	1,750	4,000	5,000	4,500	3,750	4,250	3,150	1,850	500	500
A'zaz	850	6,000	29,000	NA	3,000	4,250	NA	NA	NA	2,000	1,800	1,400	NA	NA
Badama	NA	NA	NA	NA	5,500	4,250	NA	NA	NA	NA	NA	NA	NA	NA
Bennsh	900	3,500	8,250	9,250	1,900	4,000	4,550	5,400	2,500	2,450	2,450	2,300	500	450
Bulbul	1,000	4,000	15,000	NA	2,500	3,700	NA	NA	NA	NA	NA	NA	NA	NA
Dana	1,000	3,900	13,000	11,900	2,300	3,500	NA	NA	NA	NA	NA	NA	NA	NA
Daret Azza	900	5,000	16,000	NA	7,200	4,000	NA	NA	NA	NA	NA	NA	NA	NA
Darkosh	800	1,000	NA	NA	NA	3,000	NA	5,000	4,000	4,000	6,500	2,750	NA	NA
Ehsem	1,500	5,000	7,000	NA	2,500	6,500	NA	NA	NA	NA	NA	NA	NA	NA
Ghandorah	1,000	4,400	NA	NA	525	2,600	NA	NA	NA	NA	NA	NA	NA	NA
Haritan	NA	NA	NA	NA	NA	NA	NA	NA	NA	NA	NA	NA	NA	NA
Idleb	NA	3,000	NA	NA	NA	3,000	NA	NA	NA	NA	NA	NA	NA	NA
Jandairis	1,000	NA	NA	NA	NA	2,750	NA	NA	NA	NA	NA	NA	NA	NA
Jarablus	800	4,800	NA	NA	2,250	3,300	NA	NA	NA	NA	NA	NA	NA	NA
Jisr-Ash-Shugur	1,000	2,500	28,000	NA	1,000	4,250	NA	NA	NA	NA	NA	NA	NA	NA
Kafr Nobol	NA	2,500	NA	NA	3,500	3,500	9,500	9,000	5,500	5,750	5,250	3,750	1,325	1,050
Kafr Takharim	1,200	3,200	7,000	4,750	2,000	3,500	5,500	6,750	4,500	2,750	3,500	2,500	NA	NA
Maaret Tamsrin	938	3,000	13,000	5,300	1,300	3,250	3,000	4,000	3,500	2,000	2,500	2,000	500	500
Ma'arrat An Nu'man	900	5,000	8,500	NA	2,150	4,500	NA	NA	NA	NA	NA	NA	NA	NA

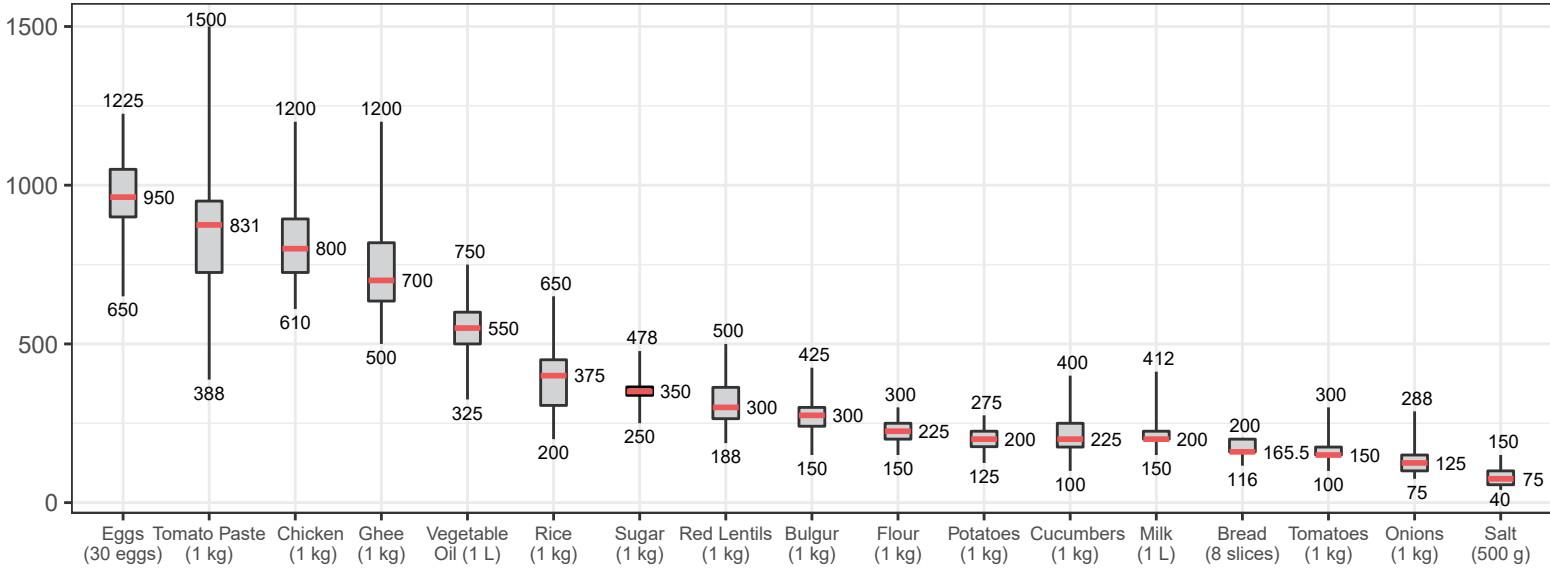
MEDIAN WINTERISATION ITEMS

Per 1 piece, Syrian Pounds

Sub-district	Jerry cans	Plastic sheets	Winter carpets	Kerosene/diesel heaters	Winter blanket	Mattress	Men's winter jacket	Women's winter jacket	Children's winter jacket	Men's winter boots	Women's winter boots	Children's winter boots	Adult hat	Children's hat
Mare'	800	2,500	NA	NA	700	2,500	10,000	7,500	5,000	5,000	4,000	3,000	1,500	1,000
Mhambal	NA	4,650	NA	NA	NA	3,900	NA	NA	NA	3,000	3,500	2,000	NA	NA
Qourqeena	800	3,500	20,000	NA	1,500	4,000	NA	NA	NA	NA	NA	NA	NA	NA
Salqin	800	2,500	22,000	10,000	2,000	4,500	NA	7,000	4,000	3,000	4,000	3,500	650	500
Saraqab	688	3,050	6,250	9,300	1,050	2,400	4,600	5,400	2,750	2,500	2,300	2,100	500	500
Sarmin	475	4,000	4,000	NA	1,100	5,750	NA	NA	NA	NA	NA	NA	NA	NA
Sharan	550	4,300	NA	NA	1,500	4,500	NA	NA	NA	NA	NA	NA	NA	NA
Sheikh El-Hadid	1,000	1,000	NA	NA	NA	3,000	NA	14,000	NA	5,000	7,000	3,000	NA	NA
Suran	700	3,650	21,000	11,200	1,275	4,250	7,000	7,000	5,000	2,500	2,500	1,500	500	500
Teftnaz	650	3,200	6,300	9,500	750	2,550	4,600	5,300	2,600	2,500	2,400	2,100	500	450
Zarbah	500	NA	NA	NA	NA	NA	NA	NA	NA	NA	NA	NA	NA	NA
Ziyara	NA	NA	NA	NA	NA	NA	NA	NA	NA	NA	NA	NA	NA	NA

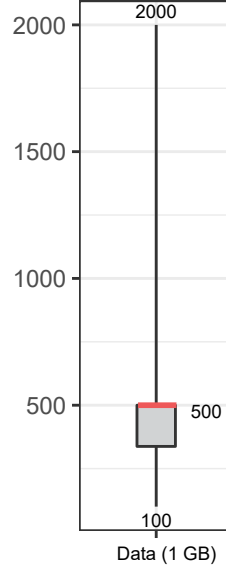
ASSESSED FOOD ITEMS

Syrian Pounds



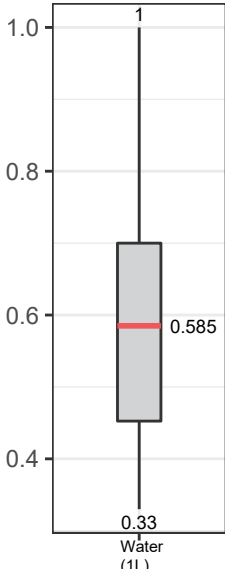
CELLPHONE DATA

Syrian Pounds



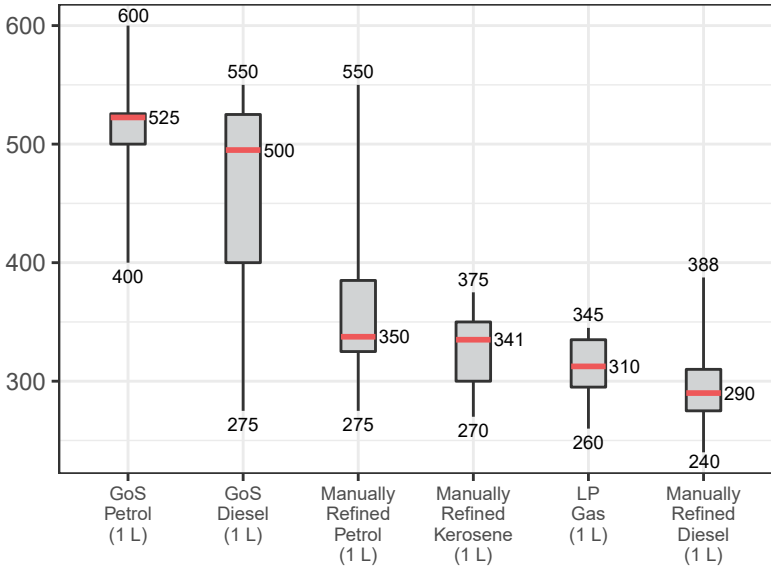
WATER TRUCKING

Syrian Pounds



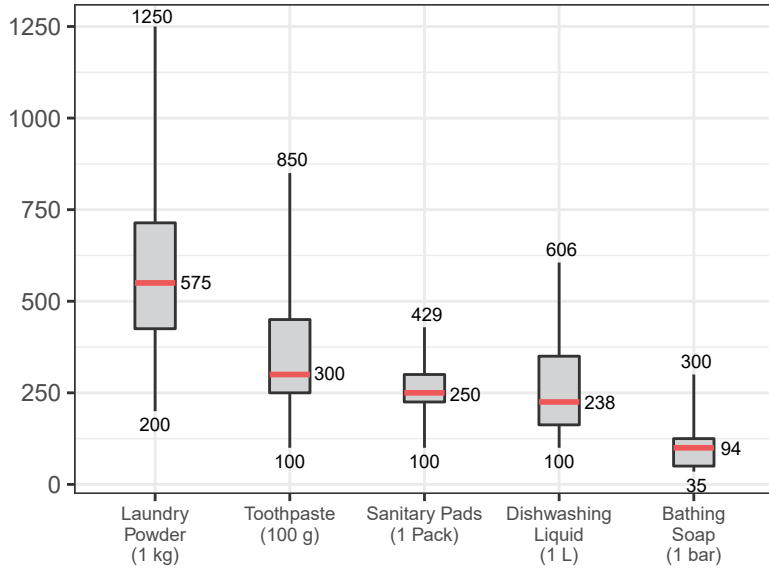
ASSESSED FUEL ITEMS

Syrian Pounds

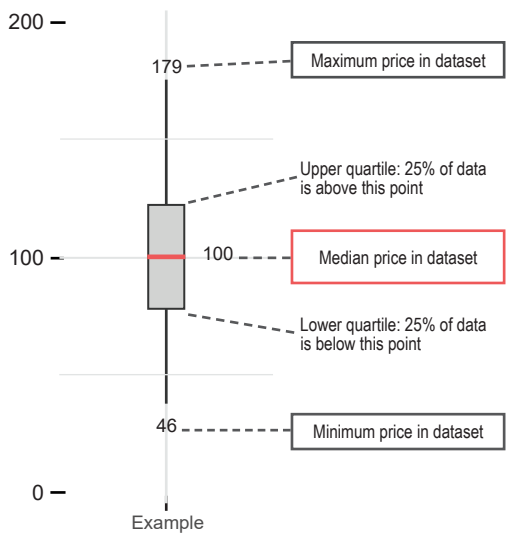


ASSESSED HYGIENE ITEMS

Syrian Pounds



READING BOXPLOTS



METHODOLOGY

In order to be included in the Syria Market Monitoring Exercise, markets must be permanent in nature, large enough to support at least two wholesalers, and diverse enough to provide a sufficient variety of goods and commodities. Additionally, the shops surveyed within each market must be housed in permanent structures and must sell certain items to be eligible for inclusion. Participating organisations train their enumerators on the Market Monitoring methodology and data collection tools using standard training materials developed by REACH. Each enumerator aims to assess three to five shops of each type in the main market in their assigned sub-district, using surveys to collect information about the cheapest prices of each item and whether there are any barriers in the supply chain. In

sub-districts where direct surveying by enumerators is not possible, data collection is conducted remotely through key informants such as shop owners, suppliers and consumers. A survey form is deployed on KoBo each month to capture price and stock information from different types of establishments, including grocery stores, fuel traders, currency exchange shops, water trucking services and mobile phone shops, among others. Nearly all participating partners submit their data to these KoBo forms, using the KoBoCollect Android app to upload data. A small number of partners, by prior permission, collect data using fully harmonised data collection tools deployed on other platforms, then submit their raw data to REACH for standardisation, compilation and cleaning. Following

data collection, REACH compiles and cleans all partners' data, normalising prices and cross-checking outliers. The cleaned data is then analysed by SMEB costs, components of the SMEB, and by commodities. These trends are observed at the sub-district-level and, when possible, at the community-level. Prices are divided into quartiles and boxplots are created to assist CBR-TWG members in understanding the distribution of prices across the northeast and northwest of Syria. To illustrate local variations in prices and availability, REACH uses the collected data to map the price of the SMEB in each sub-district and adds illustrations of surrounding border crossings, with data sourced from the United Nations Office for the Coordination of Humanitarian Affairs (OCHA). In addition, each SMEB

component costs and transport fuel prices are graphed to visualize trends over time. The cleaned datasets are available on the [Humanitarian Data Exchange](#) website and are distributed to all participating partners, as well as to interested clusters and the broader humanitarian community.

Seasonal items

Winterisation items have been added to the market monitoring exercise and data collection will continue for these items over winter, until February 2020. Whilst other commodities are bought regularly by families, winterisation items are not expected to be bought regularly and may be one-off purchases for each family member.

CHALLENGES AND LIMITATIONS

As the Syria Market Monitoring Exercise currently includes 14 partners based in 2 hubs, achieving a consistent approach is inherently challenging. Participating organisations are therefore requested to adopt harmonised data collection methodologies and tools to ensure that the data uploaded is as accurate as possible. Because this exercise collects data directly from vendors and relies on partner organizations for its wide coverage, Market Monitoring may sporadically lose coverage temporarily or for longer periods of time owing to challenges in accessing locations or due to loss in the shared data collection capacity of the project. This impacts the ability to report on trends, as can be seen in the line graphs and 'NA' values in the tables.

CHANGES TO COVERAGE

Given security and access constraints in the south of Syria, data collection has been unable to take place since July 2018.

CALCULATING 'MEDIAN CHEAPEST PRICE'

This figure is calculated by taking the median of the minimum-reported prices of a region's sub-districts. In turn, the minimum-reported prices for each sub-district were taken from the median of the minimum-reported prices of the constituent towns assessed.

CALCULATING SURVIVAL MINIMUM EXPENDITURE BASKET (SMEB) COSTS

The cost of a SMEB is calculated for each assessed sub-district by calculating the median cheapest price of each SMEB commodity in that sub-district, then multiplying these medians by the number of units that an average Syrian household requires to purchase in a month. The composition of the SMEB can be found on [page 1](#). SMEB vegetables includes potatoes, tomatoes, onions and cucumbers.

CALCULATING PRICE TRENDS OVER TIME

One month and six-month price changes and trends are calculated only with the communities of a sub-district with consistent coverage across months. For the current month's regional SMEB cost, all assessed communities are included in determining medians; thus, prices and percentage changes within the Costs and Changes tables may differ from the current month's regional SMEB cost.

WHAT IS THE CASH-BASED RESPONSES TECHNICAL WORKING GROUP?

The Cash-Based Responses Technical Working Group (CBR-TWG) was established in May 2014 to analyse the impact of the ongoing conflict on markets in Syria and guide the implementation of humanitarian cash and voucher programmes within those markets. REACH and the CBR-TWG have been partners on the Syria Market Monitoring Exercise since early 2015.

ABOUT REACH

REACH Initiative facilitates the development of information tools and products that enhance the capacity of aid actors to make evidence-based decisions in emergency, recovery and development contexts. The methodologies used by REACH include primary data collection and in-depth analysis, and all activities are conducted through inter-agency aid coordination mechanisms. REACH is a joint initiative of IMPACT Initiatives, ACTED and the United Nations Institute for Training and Research - Operational Satellite Applications Programme (UNITAR-UNOSAT). For more information please visit our website:

www.reach-initiative.org. You can contact us directly at: geneva@reach-initiative.org and follow us on Twitter [@REACH_info](#)