



# Yambio Road Monitoring

Yambio County, Western Equatoria State, South Sudan

South Sudan Displacement Crisis

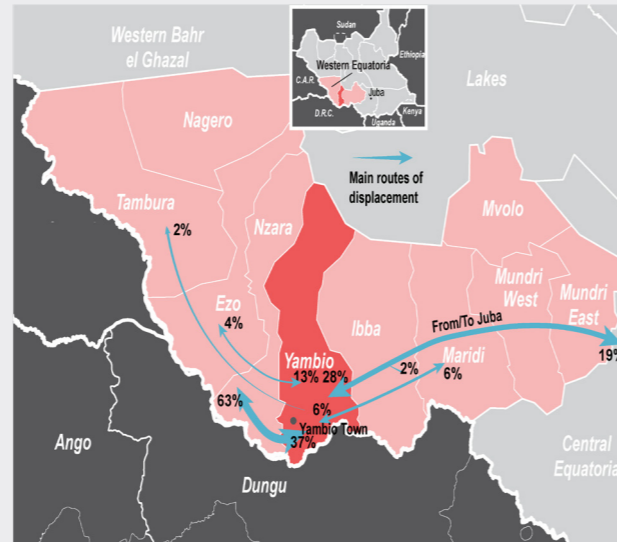
November 2021

## CONTEXT AND METHODOLOGY

Yambio town is located in Yambio County, Western Equatoria State, near South Sudan's border with the Democratic Republic of Congo (DRC). Yambio town was the centre of significant armed clashes and widespread displacement in 2016 and hosts a large population of internally displaced persons (IDPs), many of whom have started to return home as of early 2018.

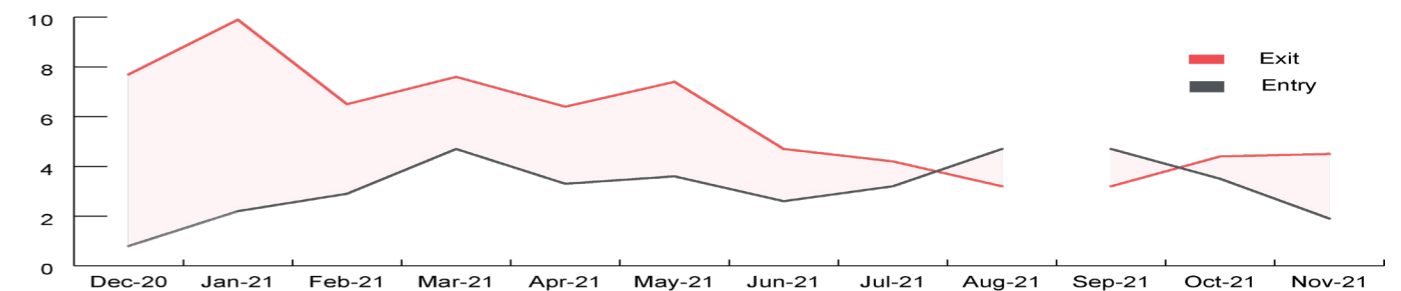
This factsheet provides results from the REACH road monitoring exercise in Yambio town, Yambio County. REACH monitors three bus/car parks in Yambio town to record the arrivals and departures of households (HHs) on a daily basis. Daily data is synthesised into a monthly factsheet to provide an overview of wider movement trends, including push/pull factors and intentions.<sup>1</sup>

Data collection took place over 21 days between 2 and 30 November 2021. In total, 243 departing HHs (445 individuals), 71 arriving HHs (123 individuals) and 3 transiting HHs (4 individuals), that were transiting through Yambio's bus/car parks, were interviewed.<sup>2</sup> Not all movements in and out of Yambio town were covered. Some arrivals and departures reportedly took place outside of data collection hours (8:00 a.m - 4:30 p.m) and were therefore not included. Moreover, departures are likely to be over-represented due to many arrivals getting off buses early as a result of the matatu system.<sup>3</sup> As such, the data presented in this factsheet is not representative, rather **indicative** of movement trends for the assessed population.-



## GENERAL MOVEMENT TRENDS<sup>1</sup>

Average daily number of individuals departing (red) and arriving (grey) with the intention to stay longer than six months, December 2020 to November 2021.<sup>9</sup>

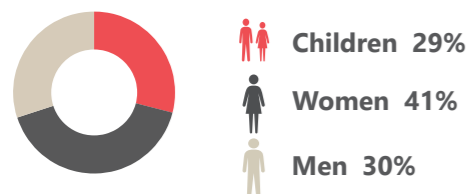


## TRANSITS THROUGH YAMBIO TOWN

Transits recorded in Yambio (3 HHs) in November were few and consisted of HHs travelling through Yambio Town as part of longer journeys. Transiting HHs came from Juba and Nzara and travelled to Ezo, Nzara and Juba counties. Push and pull factors mainly revolved around rejoining family and presence of educational services. No HHs were recorded to be transiting to and from the DRC in the month of November. However, cross border movement is likely more prevalent in areas of Yambio County closer to the border with DRC, where REACH is currently not collecting data.

## ARRIVALS TO YAMBIO

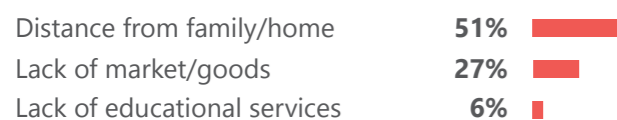
### Demographics\*



**97%** of arriving households were partial households.<sup>4</sup>

### Push factors

Most commonly reported primary reason for leaving previous location for Yambio:<sup>5,6</sup>



## Reasons for coming to Yambio

Primary reported pull factors for coming to Yambio town August - November 2021<sup>5</sup>

	August 2021	September 2021 <sup>9</sup>	October 2021	November 2021
Proximity to family/home	70%	NA	60%	51%
Presence of markets/goods	11%	NA	19%	27%
Presence of educational services	3%	NA	0%	6%

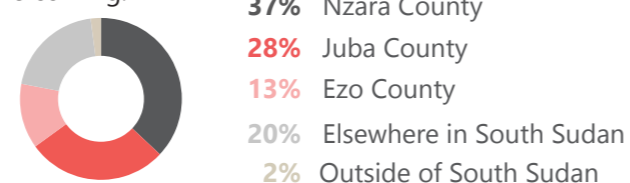
## Vulnerabilities

**23%** of total arriving HHs reported that at least one member of the HH had a vulnerability, including:<sup>7</sup>



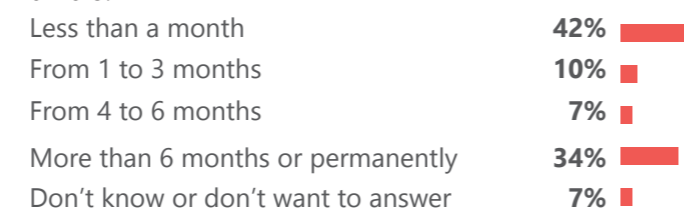
## Previous county location\*

Reported county or state from which arriving households were coming:



## Intended duration of stay in Yambio\*

Reported length of time that respondents intended to stay in Yambio:

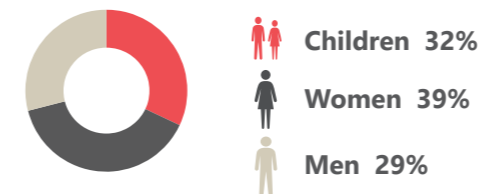


Notes:

- These are indicative trends; REACH does not record all arrivals and departures.
- Due to the limited number of transits recorded, a detailed analysis of the dynamics of transiting households was not included in this factsheet, apart from a short narrative section.
- The matatu system involves buses that follow a set route in which passengers get on and get off at pre-determined stops. This means that many arriving passengers often get off at their stops before reaching Yambio town, while departing vehicles are nearly always full.
- "Partial" in the sense that not all members of the HHs were travelling with the interviewed HHs.

## DEPARTURES FROM YAMBIO

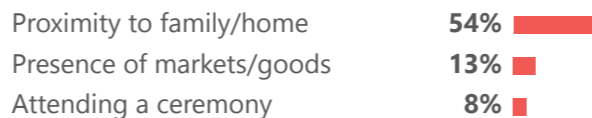
### Demographics



**97%** of departing households were partial households.<sup>4</sup>

### Pull factors

Most commonly reported primary reason for travelling to desired location from Yambio:<sup>5</sup>



## Reasons for leaving Yambio

Primary reported push factors for departing Yambio town August - November 2021:<sup>5,6</sup>

	August 2021	September 2021 <sup>9</sup>	October 2021	November 2021
Distance from family/home	60%	NA	57%	54%
Lack of markets/goods	13%	NA	12%	13%
Lack of work opportunities	8%	NA	5%	6%

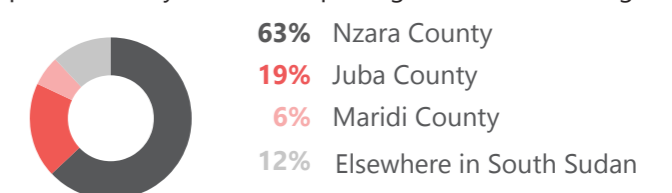
## Vulnerabilities

**33%** of total departing HHs reported that at least one member of the HH had a vulnerability, including:<sup>7</sup>



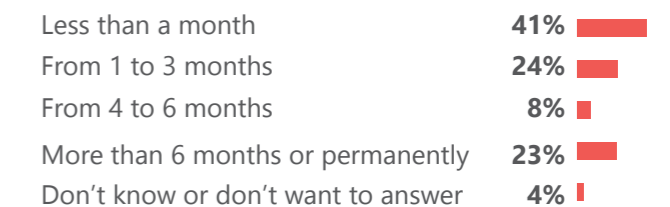
## Destination county location

Reported county to which departing households were going:



## Intended duration of stay in destination\*

Reported length of time that respondents intended to stay in destination:



Notes, continued:

- Reported presence of services or opportunities is indicative of respondents' perceptions and does not necessarily reflect availability.
- In addition, 8% of arriving HHs and 15% of departing HHs reported that their travel was motivated by pull factors only, with no specific push factors driving them from their previous location.
- Respondents could select multiple answers.
- In addition, having at least one elderly household member, separated and unaccompanied children were each reported as a vulnerability by 1% of arriving households.
- Due to FSNMS+ data collection by the team, there was no road monitoring data for September.
- Percentages are rounded to the nearest integer, so responses may not add up to 100% exactly.