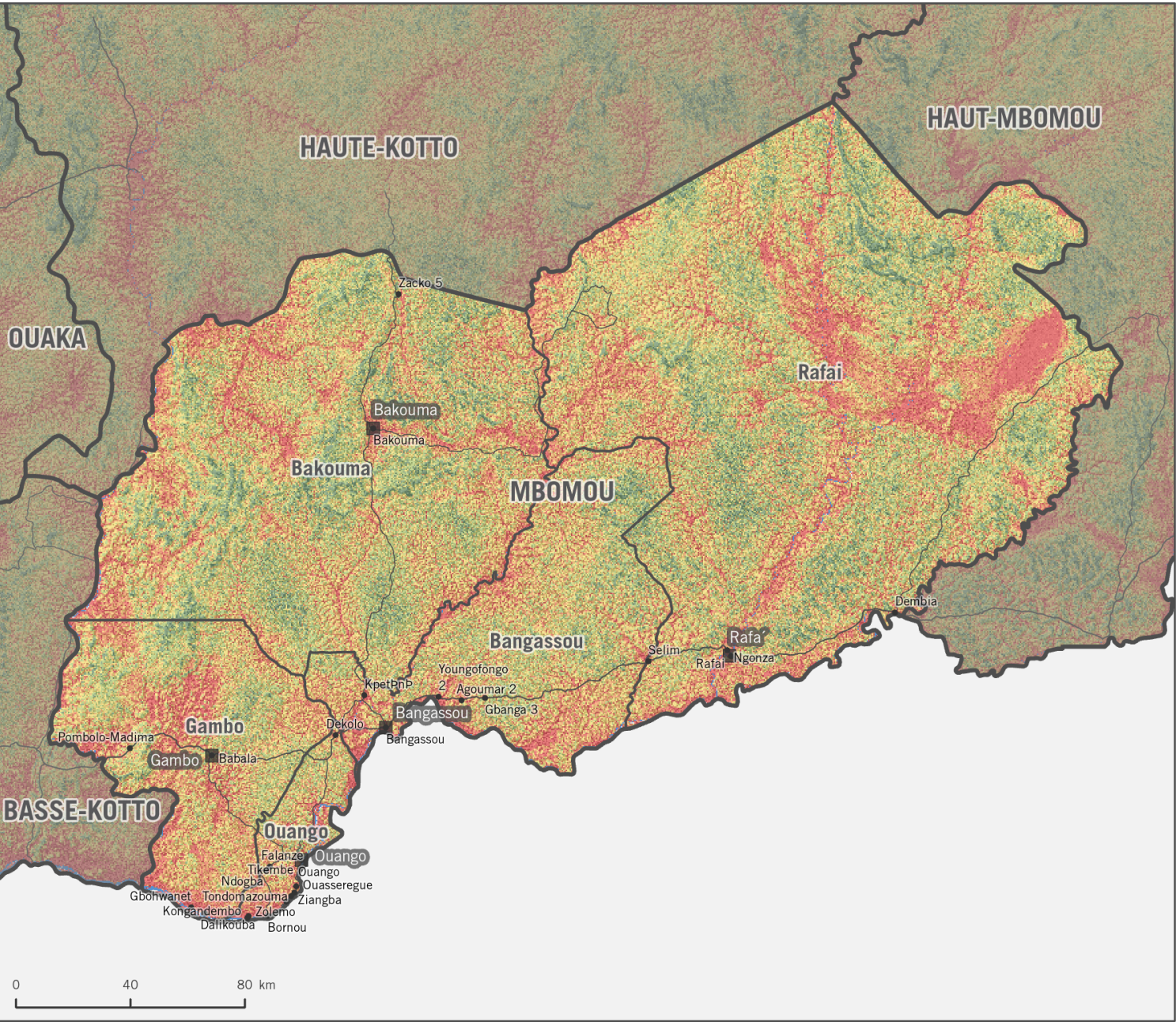


CENTRAL AFRICAN REPUBLIC - Flood Susceptibility and Risk

Mbomou Prefecture

Intended for humanitarian use

Production date : June 2020



Susceptibility

Susceptibility was calculated through weighted linear combination analysis of the following data: soil drainage, landcover, slope, elevation, rain intensity, rain duration, topographic wetness index, height above nearest drainage, drainage density.

The map shows relative flood susceptibility across the surface of Central African Republic based on physical land features and rainfall patterns

Risk

Risk was calculated using measurements of flood hazard (susceptibility), exposure, and vulnerability. **Hazard** is an average of the flood susceptibility score in populated areas. **Exposure** is measured as the proportion of people living in high/very high flood susceptibility areas. **Vulnerability** is a composite measure of housing structure fragility, food insecurity, low financial resilience, IDPs, youth, unaccompanied youth, elderly, and disabled persons.

| Prefecture | Sub-Prefecture | Vulnerability Score | Susceptibility Hazard Score | People in High/Very High Flood Risk Area % | People in High/Very High Flood Risk Area # | FINAL RISK SCORE |
|-------------------|----------------|---------------------|-----------------------------|--|--|------------------|
| Ombella M'Poko | | 1 | 4.20 | 74% | 320,360 | high |
| Lobaye | | 3 | 3.59 | 53% | 161,627 | low |
| Mambéré-Kadéï | | 2 | 2.87 | 27% | 122,092 | very low |
| Nana-Mambéré | | 2 | 2.06 | 9% | 21,026 | very low |
| Sangha-Mbaéré | | 3 | 3.65 | 59% | 74,824 | medium |
| Ouham Pendé | | 3 | 2.77 | 24% | 116,132 | low |
| Ouham | | 2 | 4.08 | 74% | 334,110 | medium |
| Kémo | | 3 | 4.13 | 70% | 106,957 | high |
| Nana-Gribizi | | 2 | 4.04 | 72% | 101,176 | medium |
| Ouaka | | 3 | 3.80 | 65% | 240,230 | medium |
| Bamingui-Bangoran | | 2 | 3.99 | 70% | 41,846 | medium |
| Haute-Kotto | | 2 | 4.19 | 81% | 91,422 | high |
| Vakaga | | 2 | 4.39 | 91% | 59,101 | high |
| Basse-Kotto | | 3 | 3.73 | 63% | 198,780 | medium |
| Mbomou | | 1 | 4.12 | 79% | 163,962 | medium |
| | Bakouma | 1 | 3.96 | 70% | 15,374 | medium |
| | Bangassou | 2 | 4.09 | 76% | 68,779 | medium |
| | Gambo | 1 | 4.09 | 78% | 12,313 | medium |
| | Ouango | 1 | 4.42 | 90% | 56,510 | high |
| | Rafai | 3 | 4.11 | 77% | 12,333 | high |
| Haut-Mbomou | | 4 | 3.43 | 57% | 47,450 | low |
| Bangui | | 2 | 4.80 | 98% | 858,552 | high |



Flood Susceptibility

- Very Low

Low

Medium

High

Very High
- Capitals

Settlements (>1,000)

Primary Roads

Secondary Roads

Surface Water

Data sources:
Administrative Boundaries- UNOCHA
Surface Water- ESA Climate Change Initiative, 20m Africa Land Cover 2016
Flood Susceptibility- REACH Initiatives CAR
Coordinate System: GCS WGS 1984

File:
REACH_CAR_Map_FloodRisk_Mbomou_11JUN2020_A4

Contact:
reach.mapping@impact-initiatives.org

Note: Data, designations and boundaries contained on this map are not warranted to be error-free and do not imply acceptance by the REACH partners, associates, donors mentioned on this map.

See methodology at the CAR REACH Resource Centre [link](#)

Funded by:

