



IDP Camp Profile - Garmawa

Ninawa, Iraq
December 2015

Management agency: BRHA
Manager/Focal point: Ibrahim Muhammad abdull Qahar
Phone number: 7504920190
Email: Garmawa.camp.idps@gmail.com
Registration actor: BRHA

Summary

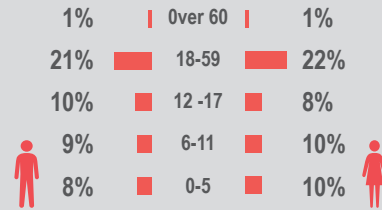
This profile provides an overview of conditions in Garmawa camp. Primary data was collected through household surveys on 16/12/2015. Households were randomly sampled to a 95% confidence and 10% margin of error, based on population figures provided by CCCM. In some cases, additional information from camp managers has been used to support findings. Round III of data collection was in September 2015.

Camp Overview

of individuals: 5216
of households: 1063
Date opened: 6/12/2014
Accommodation: 1200
Ongoing extension: yes
Planned capacity: 1300
Camp area: 0.28 km²

Demographics

49% male / 51% female



Location Map

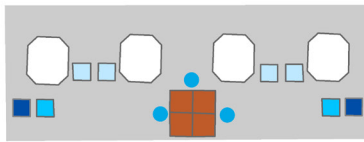


IDP Camp Map - Garmawa

Lat.36° 38' 51.682" N Long. 43° 14' 12.803" E

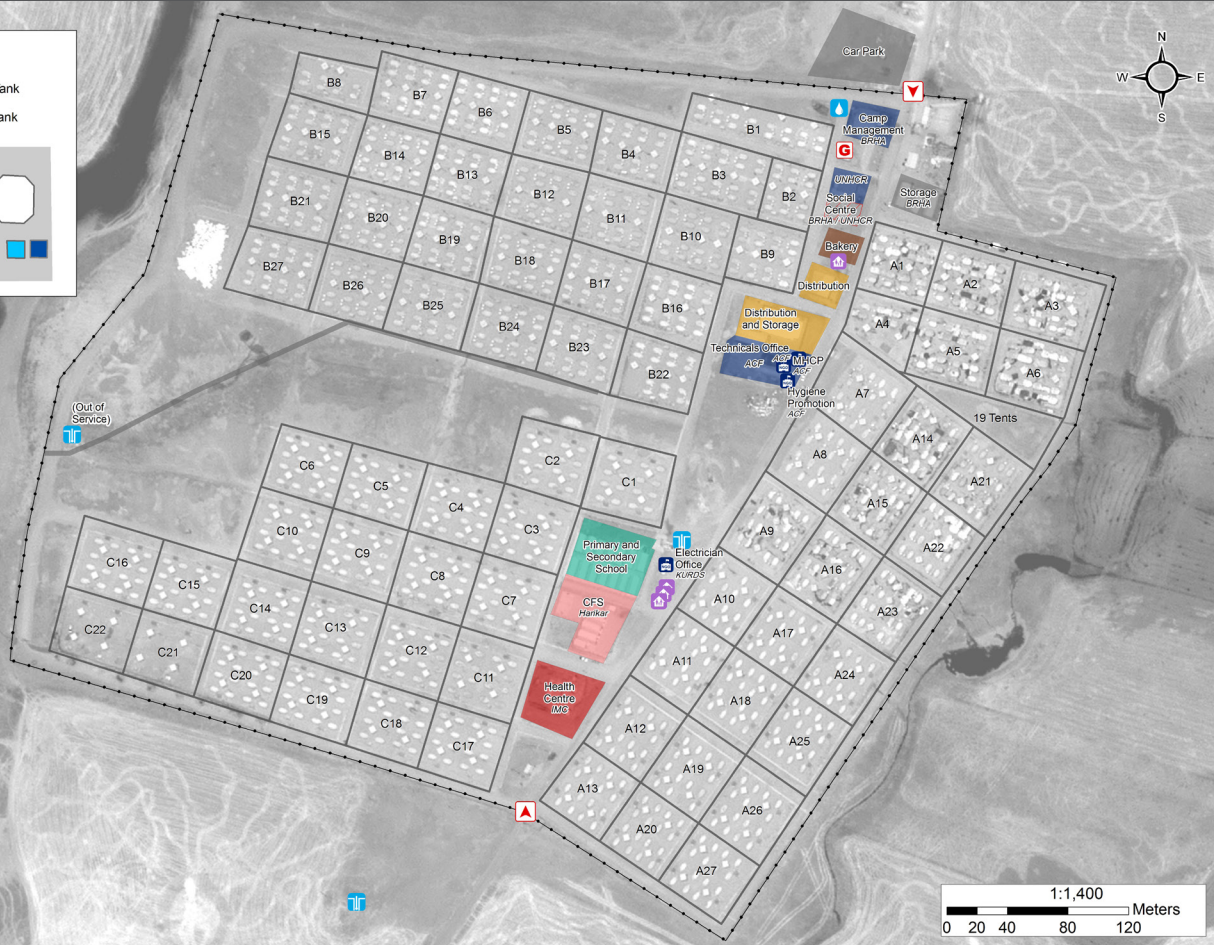
Layout of 4 Tent Block

Tent Latrine Septic Tank
Kitchen Shower Water Tank



Camp Infrastructure

Fence
Block
Under Construction
Health
Office
Distribution
Education
Child Friendly Space
Service
Storage
Entrance
Office
Community Centre
Borehole (3)
Water Tank (1)
Generator
Grey Water



Sectoral Minimum Standards

		Target	Previous Round	Current Round	Achievement
Education	% of children aged 6-11 attending formal school	100%	20%	88%	●
	% of children aged 12-17 attending formal school	100%	18%	46%	●
Food	% of households accessed Family Food Parcel or equivalent in the past month	100%	98%	96%	●
Health	Health services are available on-site or within walking distance	yes	yes	yes	●
CCCM	Average open area per household	min. 30m ²	457m ²	228 m ²	●
Protection	% of IDPs registered on an individual basis (MODM/DDM)	100%	84%	96%	●
	% of households accessed shelter assistance since arrival at the camp	100%	74%	85%	●
	Average covered area per person	min. 3.5m ²	5.8m ²	4.6 m ²	●
Shelter	Average number of individuals per tent	max.5	4	4	●
	# of persons per latrine	max. 20	8	9	●
	# of persons per shower	max. 20	4	9	●
WASH	Frequency of solid waste disposal at least weekly	min. weekly	yes	yes	●

Targets based on minimum standards agreed with the CCCM Cluster, Iraq. Findings based on household-level data, enumerator field observations, and camp management documentation
● Minimum standard reached, ● More than 50% minimum standard reached, ● Less than 50% of minimum standard reached or not at all



CCCM CLUSTER
SUPPORTING DISPLACED COMMUNITIES

For more information on this profile please contact:
CCCM Cluster: iraqimo@cccmcluster.org
REACH Initiative: melissa.meinhart@reach-initiative.org

REACH An initiative of
IMPACT Initiatives
ACTED and UNOSAT



IDP Camp Profile - Garmawa

Ninewa, Iraq
December 2015

Management agency: BRHA
Manager/Focal point: Ibrahim Muhammad abdull Qahar
Phone number: 7504920190
Email: Garmawa.camp.idps@gmail.com
Registration actor: BRHA

Shelter

Top three observed shelter types*

Tent on cement base	100%	<div></div>
n/a	n/a	
n/a	n/a	

*Households were asked to select all shelter typologies within household.

Winterization and household items

67%	reported a second fly sheet
100%	reported at least one stove or space heater
24%	reported at least one blanket per person
1	average number of carpets per HH
6	average number of mattresses per HH

Hazards

5%	reported exposed electrical cables at site
----	--

Shelter Improvement

18%	reported making own improvements to their shelter
49 USD	average total reported cost of shelter improvements

*Conversion rate: 1 USD = 1,106.37 IQD

Households reporting flooding in past three months, by type

No flooding	100%	<div></div>
Flooding (temporary damage)	0%	
Flooding (permanent damage)	0%	

Household Income

80%	reported a household income of under 10 USD in the past month (including aid, gifts or pension)
57%	reported humanitarian aid within top three sources of livelihood in past month

Protection

Family Separation

0%	reported hosting unaccompanied or separated minors
0%	reported that other family members intended to join them

Vulnerable groups

Pregnant / lactating women	24%	<div></div>
Chronically ill individual(s)	7%	<div></div>
Disabled individual(s)	2%	<div></div>

Intentions

0%	planned to move to a different location in next 3 months
----	--

Restrictions

48%	reported entry or exit restrictions during daylight hours
-----	---

Documentation

1%	reported missing civil documents
----	----------------------------------

Food Security and Coping Strategies

Reported access to food assistance

96%	accessed food assistance in past month
94%	received Public Distribution System (PDS) in past month

Top three reported food consumption coping strategies

Cheaper Food	62%	<div></div>
Borrowed Food	28%	<div></div>
Smaller meals	24%	<div></div>

Top three reported livelihood coping strategies

Spent savings	66%	<div></div>
Bought food on credit	61%	<div></div>
Sold HH assets	33%	<div></div>

WASH

Latrines and showers

100%	reported access to functional latrines
90%	reported access to functional showers

Top three reported methods of waste removal

Collected	100%	<div></div>
n/a	n/a	
n/a	n/a	

Primary reported drinking water source

51%	connection inside the home to collective water storage
49%	connection inside the home to private water storage
0%	communal water tap outside the shelter
0%	purchased from shop
0%	open well
0%	other source

Access to water

4%	reported 24 consecutive hours without access to water in the past month
----	---

Community Organisation

IDP committees

80%	reported awareness of IDP committee(s)
-----	--

Of these, IDPs reported that camp committees were as follows:

92%	representative of camp composition
18%	included female representation
26%	had elected representative(s)
79%	had a complaints mechanism

Access to fire-extinguishers

0%	reported awareness of available fire-extinguishers
----	--