



Bentiu Snapshot

Rubkona County, Unity State, South Sudan

Summary

Bentiu protection of civilians site (PoC) was established in December 2013 following the outbreak of violence.

In the month of October population increased through new smaller arrivals than in September thus 4,699 individuals registered in September and 3,803 in October 2015 whom the majority coming from Leer, Rubkona and Koch. Though there is also a low but un-quantified number of people observed leaving the PoC in October.

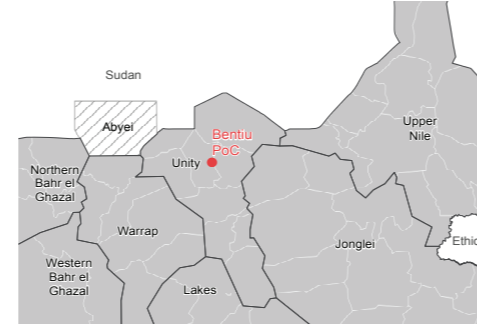
Data was provided by IOM (as of 04/11/2015) and camp manager (as of 09/11/2015) and spatial data was updated by REACH (as of 05/11/2015).

Site Overview

Site management: DRC, IOM and Internews
Site population: 121,340*
Accommodation: 11,012 structures
Planned capacity: 13,243 structures
Site area: 1,125,000 m²
IDP County of origin
 1st largest group Rubkona County
 Other large groups Not specified

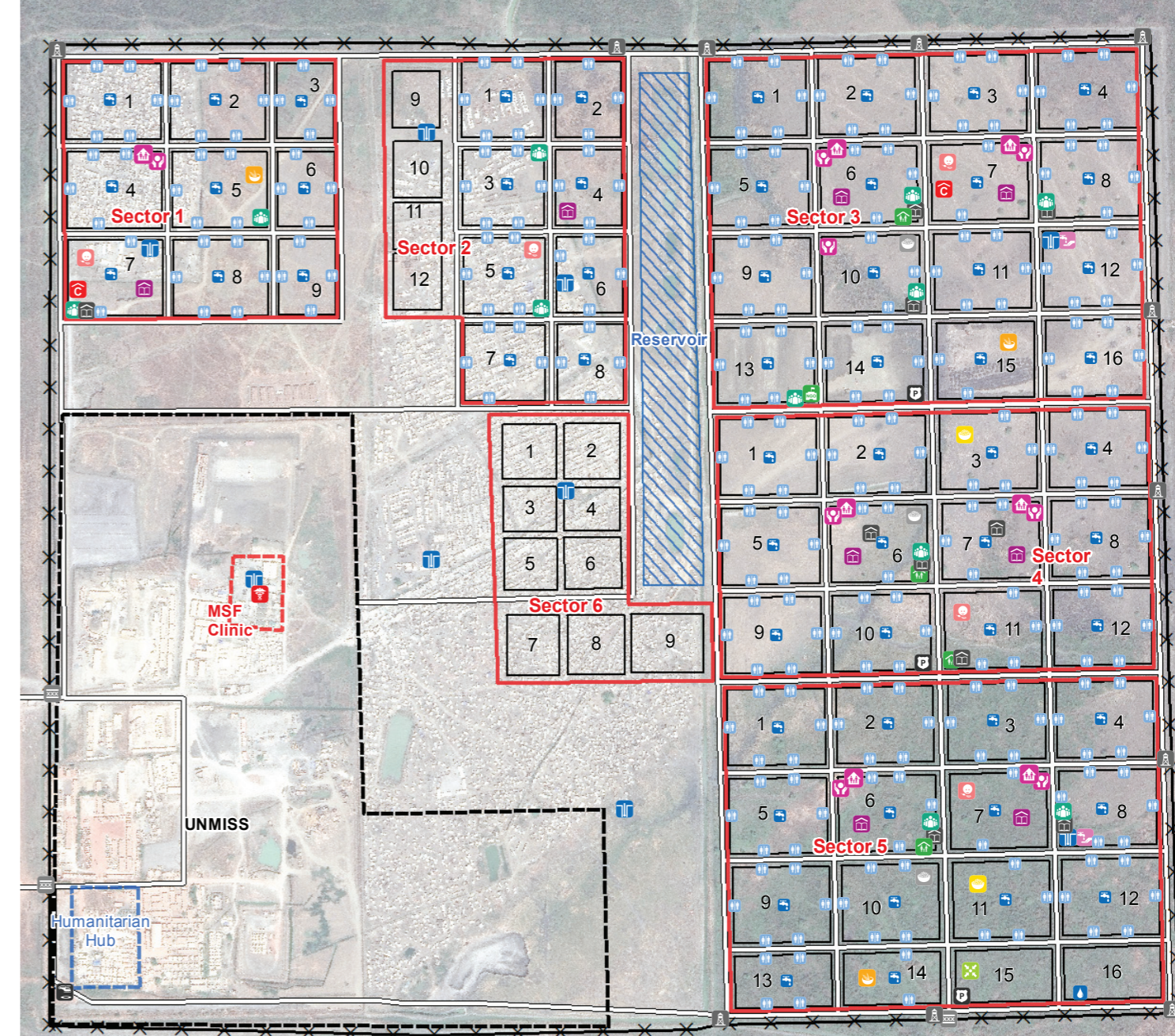
* Population figure provided by IOM (04/11/2015). Population balance (between September and October) differs between IOM, CCCM, and CM for the same period.

Location Map



Bentiu Site Map

Lat: 9.332 Long: 29.789



Implementing Agencies

- EDUCATION** Interos, Mercy Corps, Unicef, Windle Trust and World Relief
- FOOD** WFP, GAA, FAO and VSF
- HEALTH** IOM, IRC, MSF, World Relief, MI, UNFPA, Unicef, WFO, Medair, Concern and Care
- PROTECTION** UNHCR, IRC, NP, Interos, HRSS and ICRC
- SHELTER / NFI** Concern, UNHCR
- WASH** Concern, UNICEF, Mercy Corps, IOM, MSF

CCCM Mechanisms

The following structures are in place:

- Leadership high committee
- Youth council
- Vulnerable's committee
- Traders' Union
- Block leaders

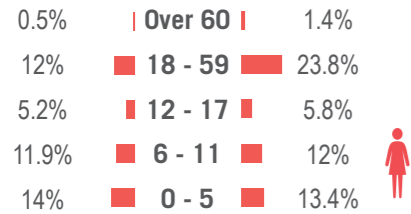
Reported Priority Needs

Priority needs were reported and ranked by camp management as:

- 1 Health (malaria) & malnutrition**
- 2 Site congestion**
- 3 Sanitation**

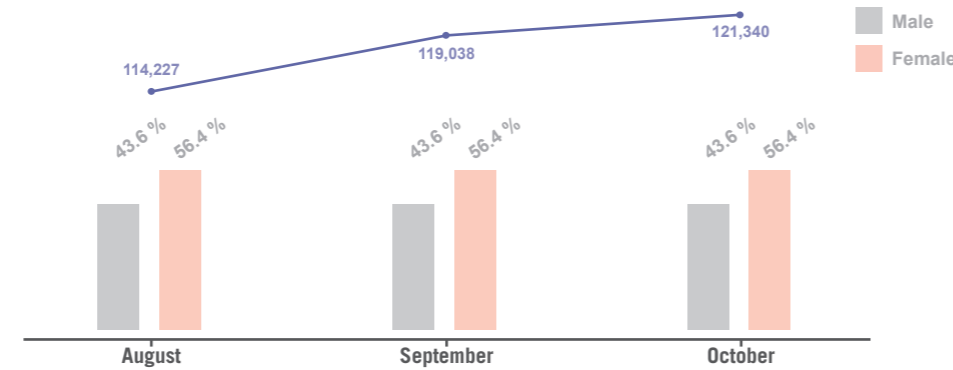
Demographics

43.6% male / 56.4% female**



** Population figure by IOM (as of 04 Nov 2015)

Demographic Trends***



*** Figure extracted from the DTM. No extra data / information was available.

Sectoral Overview

		Target****	Achieved	
Food	Food accessible on-site	Yes	Yes	●
	Markets physically accessible from site	Yes	Yes	●
Health	Health services are available on-site or within walking distance	Yes	Yes	●
CCCM	Average open area per person	min. 30 m ²	9.3 m ²	●
	% of families living in rakoobas/tukul	min 75%	More than 75%	●
Shelter	% of families living in makeshift shelters	0%	10%	●
	Average number of individuals per tent	max 5	11	●
	Average covered area per person*****	min 4.2 m ²	1.5 m ²	●
Water Sanitation	Liters of water available per person per day	min 15 L	10 L - 15 L	●
	# of persons per latrine (m/f)	max 20	25	●
	# of persons per shower (m/f)	max 20	N/A	●

****Targets are based on minimum standards agreed with the CCCM Cluster ● Target reached, ● Target more than 50% reached, ● Target less than 50% or not at all reached. ● No data

***** Bentiu PoC shelters were designed to be 17.5 m²

WASH Facilities Water point Latrine/Shower Water treatment plant	Education Facilities Primary school ECD/CFS	Hygiene promoter tent Protection multipurpose building Unaccompanied minor (UAM) tukul Other FSL space	Site Structures Block Sector Contingency area Humanitarian Hub MSF Clinic Recreational pitch Reservoir UNMISS Berm
Health Facilities Secondary health center PHC/Breastfeeding center/ANC/PNC Nutrition center	Humanitarian Facilities Camp management Registration point Communication center Leadership/Committee tent Market Food distribution	Other Facilities Place of worship Gate UNIPOL Helipad Watch tower	