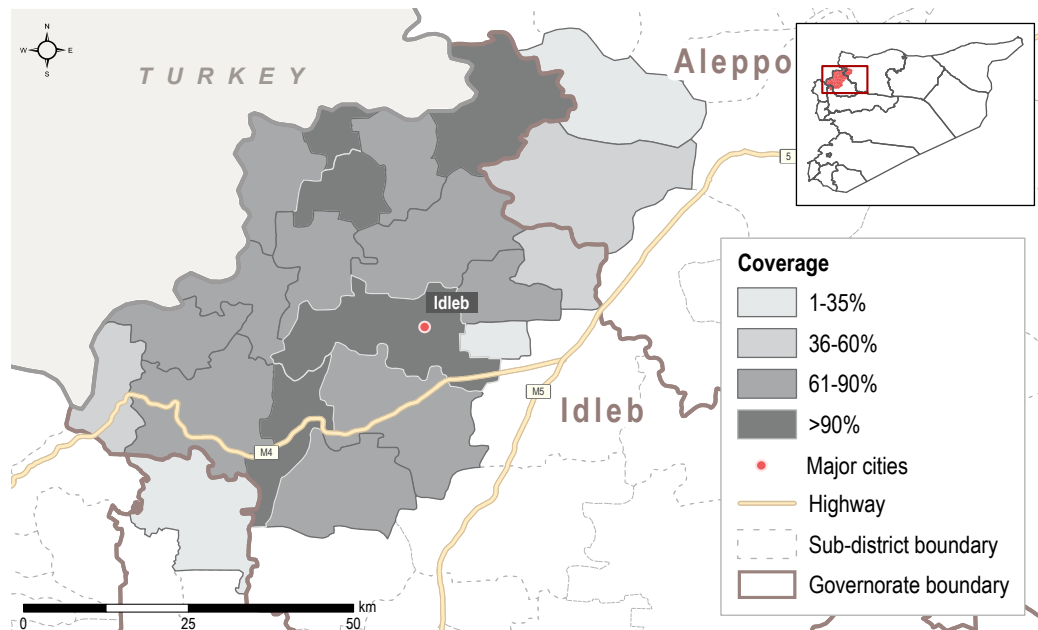


### Introduction and Methodology

HSOS is a monthly assessment that provides comprehensive, multi-sectoral information about the humanitarian conditions and priority needs inside Syria. This factsheet presents a thematic review based on the HSOS assessment of the priority needs and humanitarian assistance, economic conditions, living conditions, access to basic services, COVID-19 situation, and the security and protection situation in the Greater Idleb area in Northwest Syria (NWS). **Sector-specific indicator findings by location can be found on the [HSOS dashboard](#).**

The assessment is conducted using a key informant (KI) methodology at the community level. REACH enumerators are based inside Syria and interview three to six KIs per assessed location, either directly or remotely (via phone). KIs are chosen based on their community-level and sector-specific knowledge. This factsheet presents information gathered in **371 communities** across the greater Idleb area.<sup>1</sup> **Data was collected between 10-18 January 2022 from 1,345 KIs** (17% female). Unless specified by an endnote, all indicators refer to the situation in the 30 days prior to data collection. Findings are indicative rather than representative, and should not be generalized across the population and region. Findings that are calculated based on a subset of the community are indicated by the following footnote ♦, with each subset specified in the endnotes.

The **complete monthly HSOS dataset** is available on the [REACH Resource Centre](#).



### Key Highlights

**Winter storms and insecurity continued to exacerbate humanitarian needs in Greater Idleb. Heavy snowfall severely affected vulnerable and displaced people, damaging displacement sites, shelters, and infrastructure. Ongoing hostilities in southern Idleb continued to claim lives and damage infrastructure, including one of the main water pumping stations in the area.**

- **Severe winter conditions including storms, strong winds and freezing temperatures severely affected displaced people** across more than 170 sites in Idleb governorate.<sup>a</sup> Two young children reportedly died of hypothermia amid the freezing temperatures.<sup>b</sup> Winterisation was the most commonly reported priority need in January for both internally displaced peoples (IDPs) and residents. Yet, winterisation assistance in January was reported by KIs in only 7% of assessed communities for IDPs, and 3% for residents ▼. Aid delivery was likely impacted by the closure of roads due to extreme weather, and the overall decrease in available funding.<sup>c</sup>

- **Health services remained overstretched due to a lack of financial resources and support.**<sup>d</sup> In 41% of the assessed communities, households reportedly did not have access to health services in their location in January. Specialised health facilities are concentrated in a few locations across the region, translating into two main barriers for households to access healthcare. The first barrier is the need to travel to those locations coupled with the high cost and lack of transportation means, reported by KIs in 78% and 68% of assessed communities, respectively. The second barrier is the increased burden on the health facilities in those locations. Indeed, a lack of medicines/medical equipment, overcrowding at the health facility, and a shortage/absence of health workers were widespread issues, reported by KIs in 60%, 53%, and 21% of assessed communities, respectively.

- **In early January, there was an increase in airstrikes on infrastructure, including farms and water pumping stations.**<sup>e</sup> An airstrike hit the main United Nations Children’s Fund (UNICEF) supported Arshani water station supplying water to around 225,000 people living in Idleb city.<sup>f</sup> According to HSOS data, KIs in 45% of assessed communities reported that not all households had access to sufficient water in Idleb city. An inactive water station was re-activated as an emergency measure, and supplies about three-quarters of the water covered by the Arshani station.<sup>g</sup>

### HSOS Dashboard

For a breakdown of sector-specific indicators by location, please see the [HSOS dashboard](#). The interactive HSOS dashboard provides a monthly sectoral overview of key indicators disaggregated at the sub-district and community level.



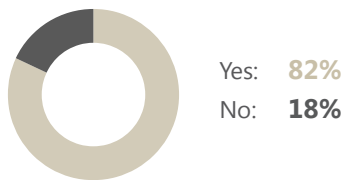
## Priority Needs and Humanitarian Assistance



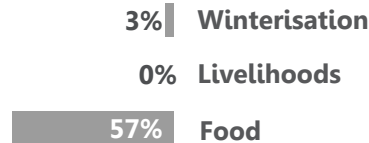
Most commonly reported **first, second, and third** and **overall** priority needs for residents (by % of assessed communities) <sup>2,3</sup>

	FIRST	SECOND	THIRD	OVERALL
1	Livelihoods	Winterisation	Livelihoods	Winterisation 69%
2	Food	NFIs	Winterisation	Livelihoods 63%
3	Healthcare	Food	NFIs <sup>▲</sup>	Food 41%

% of assessed communities where some of the resident households were able to access humanitarian assistance



% of assessed communities where KIs reported the presence of the following **types of assistance for residents** <sup>4</sup>



Most commonly reported barriers that resident households faced in accessing humanitarian assistance (by % of assessed communities) <sup>4,♦</sup>

In communities where access to humanitarian assistance was reported

- Assistance provided was insufficient to cover all people **71%** **1**
- Assistance provided was not relevant to all needs **51%** **2**
- Quantity of assistance provided to households was insufficient **37%** **3**

In communities where no access to humanitarian assistance was reported

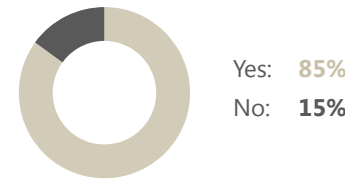
- No humanitarian assistance was available **94%**
- People did not comply with the eligibility criteria **4%**
- Distribution points were too far or the routes were inaccessible **1%**



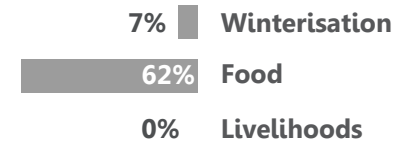
Most commonly reported **first, second, and third** and **overall** priority needs for IDPs (by % of assessed communities) <sup>2,3</sup>

	FIRST	SECOND	THIRD	OVERALL
1	Shelter	Winterisation	Livelihoods	Winterisation 75%
2	Food	Food	Winterisation	Food 55%
3	Livelihoods	NFIs	NFIs	Livelihoods 50%

% of assessed communities where some of the IDP households were able to access humanitarian assistance



% of assessed communities where KIs reported the presence of the following **types of assistance for IDPs** <sup>4</sup>



Most commonly reported barriers that IDP households faced in accessing humanitarian assistance (by % of assessed communities) <sup>4,♦</sup>

In communities where access to humanitarian assistance was reported

- Assistance provided was insufficient to cover all people **72%** **1**
- Assistance provided was not relevant to all needs **51%** **2**
- Quantity of assistance provided to households was insufficient **36%** **3**

In communities where no access to humanitarian assistance was reported

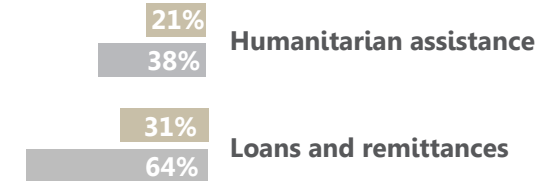
- No humanitarian assistance was available **100%**
- Not aware if assistance was available **<1%**
- Distribution points were too far or the routes were inaccessible **<1%**



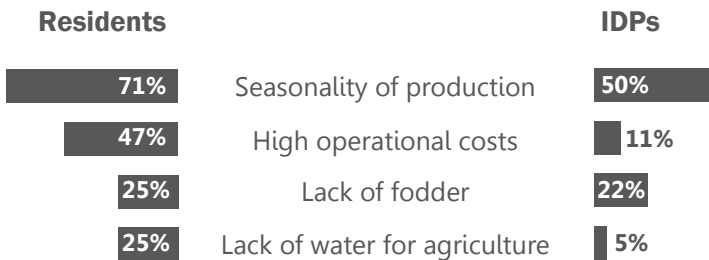
## Economic Conditions

Region	Median estimated monthly household expense for water for a household of six <sup>5,6</sup>			Median estimated monthly rent price for a two bed-room apartment <sup>5,6</sup>			Median estimated daily wage for unskilled labour <sup>5,7,8</sup>		
	SYP	TRY <sup>▲</sup>	USD	SYP	TRY	USD	SYP	TRY	USD
Greater Idlib area	19,187 SYP			82,231 SYP			6,853 SYP		
% of assessed communities where indicator was reported in following currencies <sup>▲</sup>	0%	100%	0%	0%	65%	35%	0%	100%	0%

% of assessed communities where KIs reported the presence of residents and IDP households relying on non-productive sources of livelihoods to meet their basic needs <sup>4</sup>



Most commonly reported barriers to accessing livelihoods related to agriculture (by % of assessed communities) <sup>4</sup>



### 89% and 95%

% of assessed communities where KIs reported daily waged labour as a common source of income for residents and IDPs

### 75 days

Number of days the average day labourer would need to work to earn the monthly cost of basic SMEB<sup>▲</sup> items <sup>5,9</sup>

### 93% and 49%

% of assessed communities where KIs reported the insufficient income of households and general lack of employment opportunities as barriers to meeting basic needs <sup>8</sup>

Intersectoral findings on **unaffordability** hindering access to goods and services

- KIs in **69%** of assessed communities cited that **rent** was unaffordable for the majority of people
- KIs in **48%** of assessed communities cited the high cost of **fuel for generators** as a common challenge
- KIs in **81%** of assessed communities cited the high cost of **solar panels** as a common challenge
- KIs in **48%** of assessed communities cited the high cost of **water trucking** as a common challenge
- KIs in **85%** of assessed communities cited the high cost of **food** as a common challenge <sup>8</sup>
- KIs in **48%** of assessed communities cited the high cost of **health services** as a common challenge

% of assessed communities where common livelihood sources from agriculture were reported <sup>4</sup>

Livelihood source	Residents	IDPs
Food crop production	52%	5%
Cash crop production	57%	6%
Livestock products	66%	52%
Sale of livestock	11%	22%



## Living Conditions

In **95%** of assessed communities at least **80%** of the resident population reportedly owned their shelter

In **65%** of assessed communities reportedly none of the IDP households owned their shelter

In **18%** of assessed communities at least one fifth of the IDP population reportedly lived in unfinished or abandoned residential buildings

In **22%** of assessed communities at least one fifth of the IDP population reportedly lived in tents



A lack of toilets was reported as a shelter issue for IDPs in **8%** of assessed communities



A lack of bathing facilities was reported as a shelter issue for IDPs in **4%** of assessed communities

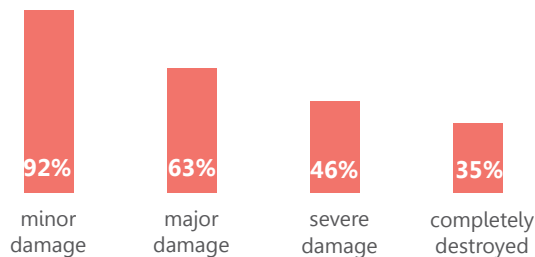


Problems with the drinking water were reported in **46%** of assessed communities



**Water being calcareous** was the most commonly reported problem with drinking water (reported by KIs in 46% of assessed communities)

Reported presence of occupied shelters with damage across communities where damages were reported (by % of assessed communities) <sup>5,10</sup>



**Shelter and repair materials being too expensive** was the most commonly reported challenge for households to repair their shelter (reported by KIs in 83% of assessed communities) <sup>4</sup>

Reported sanitation issues affecting public space in the community (by % of assessed communities) <sup>4</sup>

Rodents and/or pests are frequently visible



Solid waste in the streets



Sewage system pollutes public areas



Stagnant water



Flooding in the streets



# 95%

% of assessed communities where KIs reported that **house-holds experienced barriers to accessing sufficient food** <sup>8</sup>



In **16%** of these communities, KIs reported that the **unavailability of certain food items** was a challenge to accessing sufficient food <sup>8</sup>

Most commonly reported coping strategies for a lack of food (by % of assessed communities) <sup>4</sup>



Borrowing money to buy food **77%**



Relying on less preferred food / lower food quality **75%**



Buying food with money usually used for other things **62%**



**High price of suitable foods formula** was the most commonly reported challenge to feeding young children (reported by KIs in 93% of assessed communities) <sup>4,11</sup>

Commonly reported **sources of food** for house-holds other than markets (by % of assessed communities) <sup>4</sup>



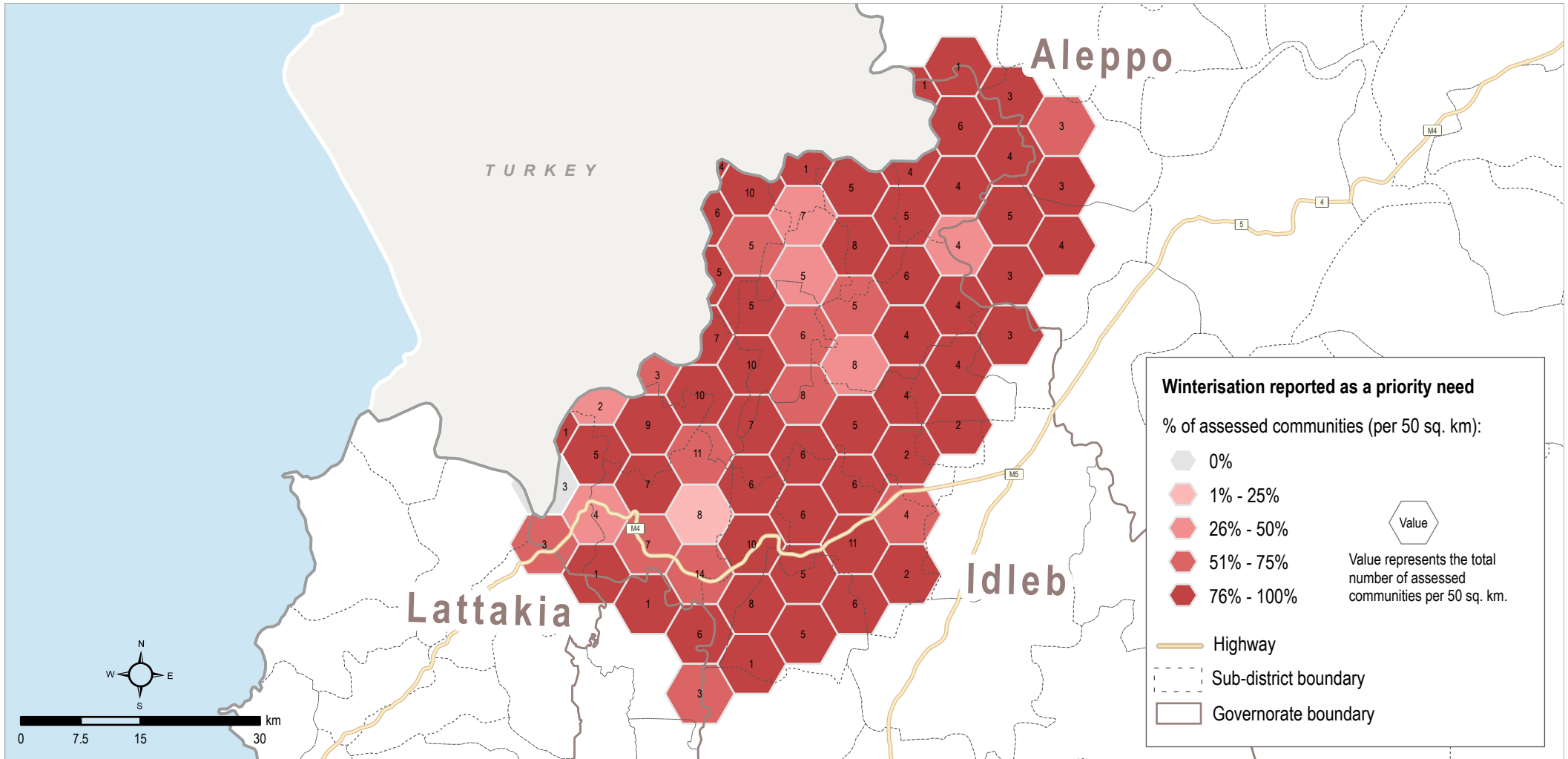
Own production or farming **51%**



Relying on food stored previously **30%**



Assistance from local council or NGOs **23%**



## Winterisation reported as a priority need

### Note on the map

This map shows the percentage of communities where KIs indicated winterisation as a priority need. In Greater Idleb, KIs in 69% of assessed communities reported this priority need for residents, and KIs in 75% of assessed communities reported this priority need for IDPs.



### Access to Basic Services



#### Access to Electricity

**7-8** hrs per day

was the most commonly reported range for hours of electricity accessible to households (reported by KIs in 31% of assessed communities)

#### Solar panels

was the most commonly reported main source of electricity (reported by KIs in 60% of assessed communities)

**44%**

% of assessed communities where KIs reported the main network is partially or completely not functioning as a barrier for electricity access ⬇



#### Access to Water

**56%**

% of assessed communities where KIs reported that not all households had access to sufficient water



7 days	6%
5-6 days	9%
3-4 days	22%
1-2 days	15%
0 days	48%

Days per week where water from the network was available (by % of 331 communities connected to a water network) ⬇

#### Private water trucking

was the most commonly reported source of drinking water (reported by KIs in 42% of assessed communities)



#### Access to Sanitation

**36%**

% of assessed communities where KIs reported that no sewage system was present

Most commonly reported ways people disposed of solid waste (by % of assessed communities)

<b>41%</b>	Paid private waste collection
<b>19%</b>	Waste burnt
<b>18%</b>	Free public waste collection

**42%**

% of assessed communities where KIs reported waste removal services as a WASH<sup>4</sup> priority need<sup>8</sup>



#### Access to Markets

**15%**

% of assessed communities in which households reportedly were unable to access markets in the assessed location

Not enough consumers to support markets in the assessed location

was the most commonly reported reason for why markets were not functioning (reported by KIs in 67% of assessed communities where markets were not functioning)

**70%**

% of assessed communities where KIs reported that the lack of transportation to markets was a barrier to physically accessing food markets



#### Access to Health Services

**41%**

% of assessed communities where KIs reported that the households did not have access to health services in the assessed location

Most commonly reported health priority needs (by % of assessed communities)<sup>8</sup>

<b>48%</b>	First aid or emergency care
<b>45%</b>	Treatment for chronic diseases
<b>44%</b>	Paediatric consultations

#### Going to the pharmacy instead of a clinic

was the most commonly reported coping strategy for a lack of healthcare (reported by KIs in 87% of assessed communities)



#### Access to Education Services

**25%**  
**47%**

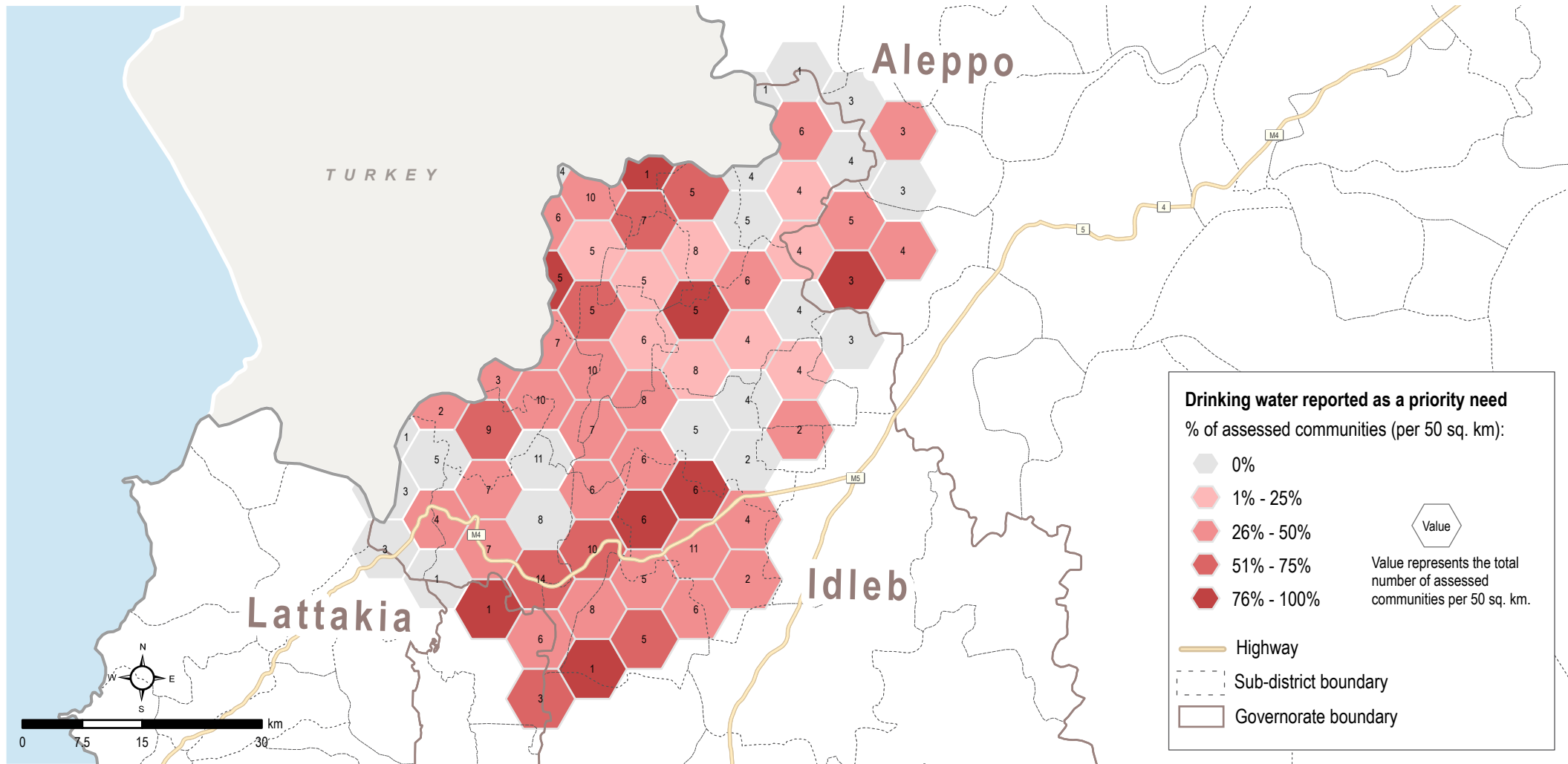
% of communities in which half or less of the school aged-children accessed school in the last 30 days for residents and IDPs

<b>90%</b>	In person
<b>8%</b>	Online
<b>10%</b>	Not functioning

% of assessed communities where KIs reported on the functioning of education services in the assessed location<sup>4</sup>

**15%**

% of communities where KIs reported that the lack of access to internet, electricity and/or equipment was a barrier to accessing (online) education services<sup>8</sup>



## Drinking water reported as a priority need

### Note on the map

This map shows the percentage of communities where KIs indicated drinking water as a priority need.



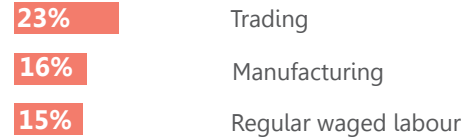
## COVID-19

Effects of COVID-19 on livelihoods sectors in the community (by % of assessed communities)

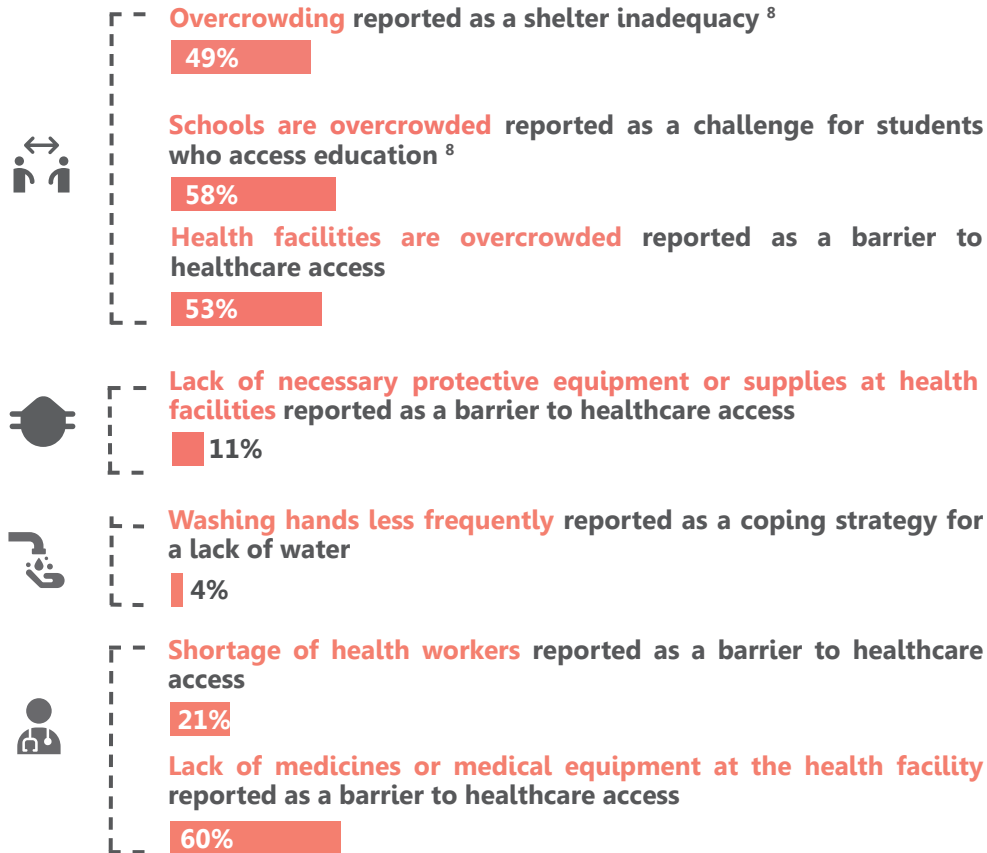


None of the available livelihood sectors were affected 74%  
At least one of the available livelihood sectors was partially or totally affected 26%

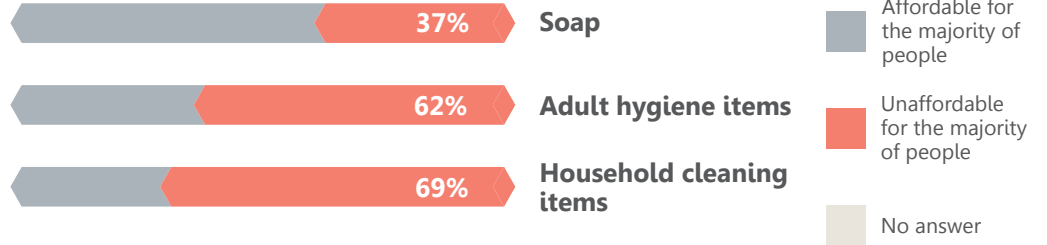
Most commonly reported sectors affected by COVID-19 (by % of assessed communities)



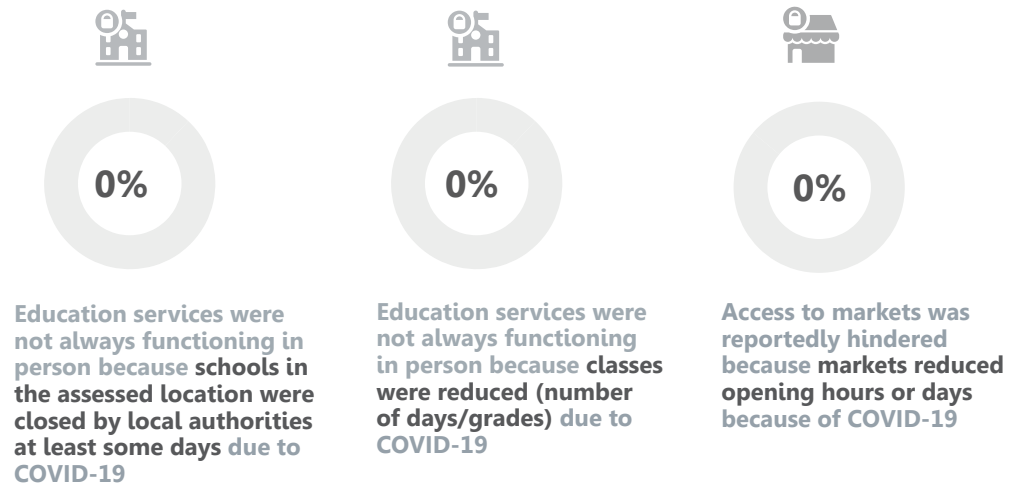
% of assessed communities where COVID-19 risk indicators were reported by KIs

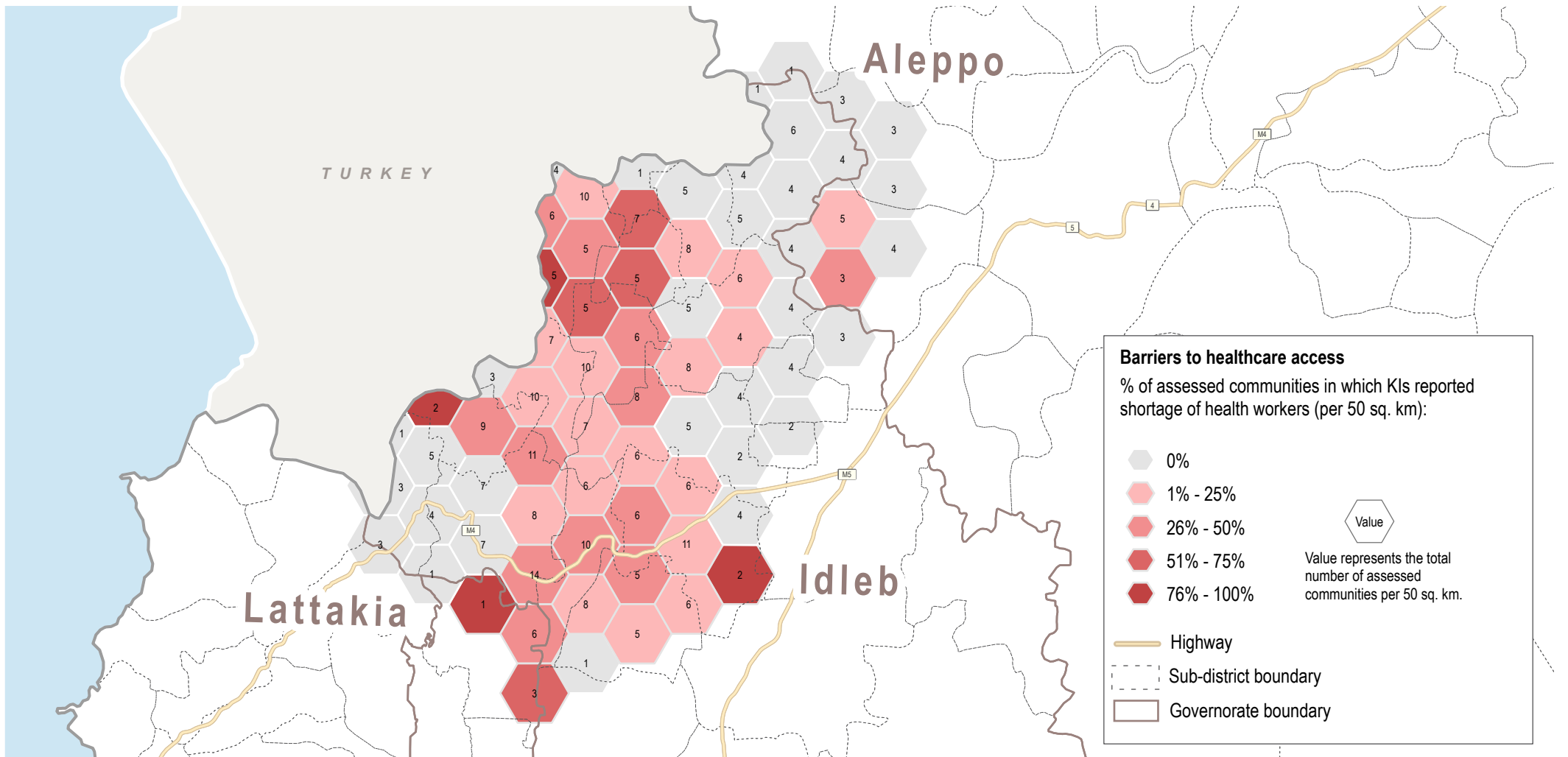


Reported hygiene item availability and affordability (by % of assessed communities) <sup>12</sup>



% of assessed communities where COVID-19 related barriers to access services were reported





## Barriers to access healthcare

### Note on the map

This map shows the percentage of communities where KIs indicated the lack of health workers as barriers to accessing healthcare. In Greater Idlib, KIs in 21% of the assessed communities reported the issue of lacked of health workers.



### Security and Protection

#### Intersectoral findings on security



**General safety and security concerns restricting movement to markets** was a reported barrier to market access in **8%** of assessed communities

**General safety and security concerns at markets** was a reported barrier to market access in **12%** of assessed communities

**Markets not opening because of security issues** was a reported barrier to markets not functioning in **1%** of assessed communities



**Threat from airstrikes** was reported as a protection risk in **117** communities <sup>8</sup>

**Threat from shelling, snipers or gunfire** was reported as a protection risk in **91** communities <sup>8</sup>

**Threat from improvised explosive devices (IEDs), mines or unexploded ordnances** was reported as a protection risk in **16** communities <sup>8</sup>

**Fear from imminent conflict** was reported as a protection risk in **64** communities <sup>8</sup>



**The inability to lock homes securely** was reported as a shelter inadequacy in **33%** of assessed communities <sup>8</sup>

**Lack of lighting around the shelter** was reported as a shelter inadequacy in **84%** of assessed communities <sup>8</sup>

**The security situation** was reported as a barrier to shelter repairs in **26%** of assessed communities



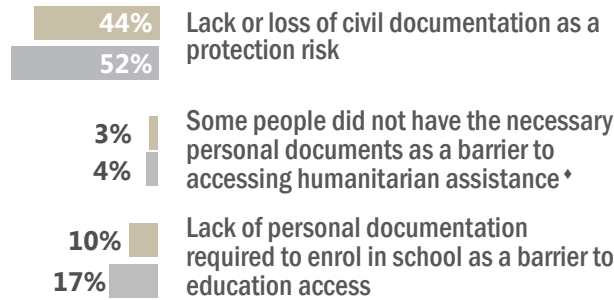
**General safety and security concerns at the health facility** was reported as a barrier to healthcare in **11%** of assessed communities

#### Most commonly reported protection priority needs (by % of assessed communities) <sup>3, 8</sup>

- 1 85%** Special assistance for vulnerable groups
- 2 51%** Specialised child protection services
- 3 39%** Psychosocial support

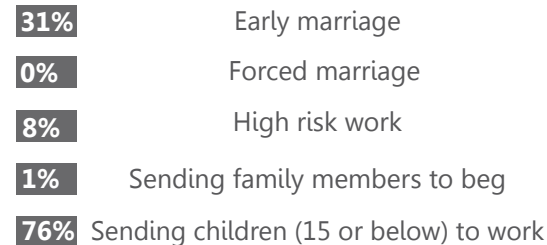


#### % of assessed communities where the lack of civil documentation for residents and IDPs was reported

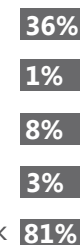


#### % of assessed communities where extreme coping strategies used by residents and IDPs to meet basic needs were reported <sup>4</sup>

##### Residents



##### IDPs



#### Age, Gender, and Diversity

KIs in **49%** of assessed communities reported a **lack of employment opportunities for women** as a barrier to meeting basic needs <sup>8</sup>

KIs in **39%** of assessed communities reported a **lack of employment opportunities for persons with a disability** as a barrier to meeting basic needs <sup>8</sup>

KIs in **18%** of assessed communities reported a **lack of privacy for women and girls at health facilities** as a barrier to healthcare access

KIs in **42%** of assessed communities reported a **lack of market access for people with restricted mobility**

KIs in **6%** of assessed communities reported that **women and girls feel unsafe when traveling to markets**

**Children below the age of 12** were reported as a group affected by child labour in **10%** of assessed communities <sup>8</sup>

**Hazardous child labour** was reported as a protection risk in **6%** of assessed communities <sup>8</sup>

## Endnotes

1. The greater Idleb area includes Idlib governorate, parts of Aleppo western countryside, and parts of Hama northwestern countryside controlled by armed opposition groups (AOGs).
2. KIs were asked to select a first, second, and third highest priority needs in their communities. The ranking shows the sectors most frequently chosen as either first, second or third highest priority. The overall priority need refers to the frequency a sector was selected across all three categories (first, second or third highest priority).
3. KIs could select three answers, thus findings might exceed 100%.
4. KIs could select multiple answers, thus findings might exceed 100%.
5. KIs were asked about the situation at the time of data collection, instead of the last 30 days.
6. KIs had the option to select the price in United States Dollars (USD), Turkish Lira (TRY), or Syrian Pounds (SYP). When the price was not reported in SYP, the Idleb Governorate Market Monitoring exchange rate was used to calculate the amount in SYP. According to the [Joint Market Monitoring Initiative \(JMMI\)](#) January 2022, 1 USD = 3,668 SYP; 1TRY= 275 SYP.
7. According to the Idleb Governorate JMMI January 2022, 1 USD = 3,668 SYP.
8. Findings for residents and IDPs were merged. The merge was calculated as follows: (option was selected for either residents or IDPs) / (communities reporting challenges/barriers/coping strategies for either residents or IDPs).
9. According to the Idleb Governorate JMMI January 2022, the Survival Minimum Expenditure Basket (SMEB) = 510,568 SYP.
10. Minor damage (cracks in walls, leaking roof, need of new doors and window repairs, etc.); Major damage (buildings with extensive damage to window frames and doors, but no structural damage to columns, slabs, or loadbearing walls); Severe damage (buildings with significant structural damage to column slabs, or loadbearing walls, cracking, steel elements and deformations visible in concrete; the building would require extensive repairs); Completely destroyed (buildings with structural damage so significant that rehabilitation is not possible).
11. KIs were asked about the situation in the last two months, instead of the last 30 days.
12. Adult hygiene items include: shampoo, toothbrush, and toothpaste. Household cleaning items include: washing powder, liquid, and dish detergent.

### ◆ By number of communities where KIs reported the relevant indicator for the relevant population group(s)

<i>Indicator</i>	<i>Subset</i>	<i>Indicator</i>	<i>Subset</i>
<i>N.o of communities reporting on:</i>		<i>N.o of communities reporting on:</i>	
Residents	366	Currency used for paying water	329
IDPs	352	Currency used for paying rent	267
Challenges to assistance access (resident)	286	Currency in which wages are paid (merge)	325
Barriers to assistance access (resident)	67	Barriers to accessing sufficient food (merge)	354
Challenges to assistance access (IDPs)	285	Days when water is available from network	331
Barriers to assistance access (IDPs)	53	Barriers to markets functioning	54

### Sources

- a. OCHA. (28 January 2022). Heavy snowfall hits northern Syria's displaced communities - Flash Update #4. Retrieved from: <https://www.humanitarianresponse.info>
- b. Ibid.
- c. USAID. (3 December 2021). Syria – Complex Emergency. Retrieved from: <http://reliefweb.int>
- d. WHO. (28 January 2022). Severe snowstorm in northwest Syria places health services in impossible situation. Retrieved from: <http://www.emro.who.int>
- e. OCHA. (17 January 2022). Developments in north-west Syria and Ras Al Ain - Tell Abiad - Situation Report. Retrieved from: [www.humanitarianresponse.info](http://www.humanitarianresponse.info)
- f. Ibid.
- g. Ibid.

### About REACH

REACH facilitates the development of information tools and products that enhance the capacity of aid actors to make evidence-based decisions in emergency, recovery and development contexts. The methodologies used by REACH include primary data collection and in-depth analysis, and all activities are conducted through inter-agency aid coordination mechanisms. REACH is a joint initiative of IMPACT Initiatives, ACTED and the United Nations Institute for Training and Research - Operational Satellite Applications Programme (UNITAR-UNOSAT). For more information please visit our website: [www.reach-initiative.org](http://www.reach-initiative.org). You can contact us directly at: [geneva@reach-initiative.org](mailto:geneva@reach-initiative.org).