

Qansaxley IDP Settlement Profile

Doolow District, Gedo Region, Somalia

Somalia Displacement Crisis

May 2017

Summary

This factsheet provides an overview of humanitarian needs in Qansaxley IDP settlement, in Doolow district. The findings presented here are part of an assessment with the objective to support multi-sectoral and area-based approaches to intervention in IDP settlements in Somalia.

Primary data was collected through household surveys, key informant interviews and facility mapping from 8 to 20 May 2017. Households were randomly sampled to a 95% confidence and 10% margin of error. Population figures were provided through settlement key informant interviews.

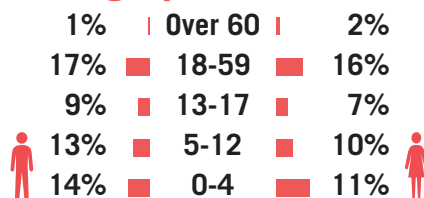
181 households and 14 key informants were interviewed in Qansaxley.

Overview

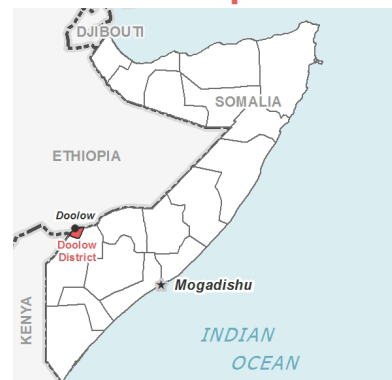
Estimated Population: 30,000

Estimated Number of HHs: 5,000

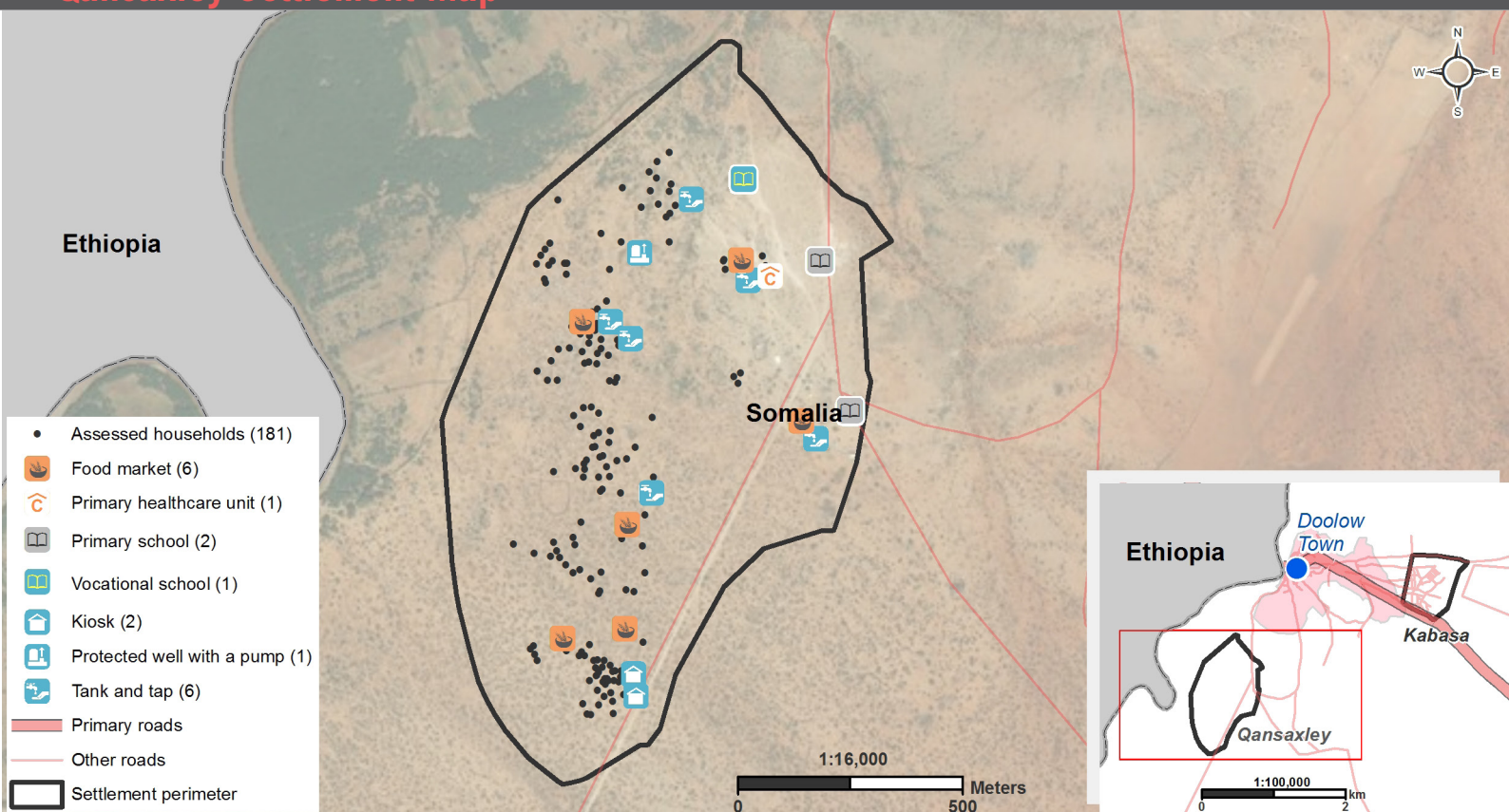
Demographics



Location Map



Qansaxley Settlement Map



Sectoral Overview

		Target ¹	Current Situation	
Education	% of children aged 5-12 that attend school	100%	50%	●
	% of children aged 13-17 that attend school	100%	28%	●
	% of schools that meet minimum teacher to student criteria of 1 teacher to every 45 students	100%	100%	●
Food	% of HHs reporting an acceptable food consumption score	100%	66%	●
Shelter/NFIs	% of HHs reporting any damage to shelter	0%	59%	●
Health	% of HHs that are able to access health facilities on site or within walking distance	100%	50%	●
CCCM	Average open area per HH	min 30m ²	0m ²	●
Water & Sanitation	% of HHs within 500m of a potable water point	100%	100%	●
	% of HHs within 50m of a functioning latrine	100%	85%	●
Protection	% of HHs that have reported to be registered by a legitimate agency	100%	59%	●
	% of HHs with land tenure rights / arrangements	100%	51%	●

1) Targets are based on minimum Sphere or UNHCR standards. ● Target reached, ● Target more than 50% reached, ● Target less than 50% or not at all reached.



Funded by
European Union
Humanitarian Aid

For more information on this profile please contact:
REACH Initiative: somalia@reach-initiative.org
<http://www.reachresourcecentre.info/countries/somalia>

REACH Informing
more effective
humanitarian action

Displacement

% of population profile	%	# of HHs	Relationship with the host communities: ²	
IDP	81%	147	Very Good	25%
Refugee	13%	24	Good	70%
Returnee	6%	10	Fair	4%
			Bad	1%

Primary pull factors for arriving in location:¹

IDP's		
1	No conflict	90%
2	Availability of assistance	88%
3	Free movement	38%
Refugees		
1	No conflict	90%
2	Availability of assistance	90%
3	Freedom of movement	60%

Primary push factors for leaving area of origin:¹

IDP's		
1	Drought	83%
2	Conflict	56%
3	Lack of livelihood	28%
Refugees		
1	Eviction	90%
2	Fear of conflict	70%
3	Conflict in surrounding areas	30%

Data on push and pull factors for returnee populations is not presented due to the small representation in the settlement.

Shelter

% of reported shelter types:

CGI Sheeting	46%
Buul	42%
Tent	12%

% of reported shelter categories:

Semi-permanent	37%
Emergency	35%
Temporary	16%
Permanent	12%

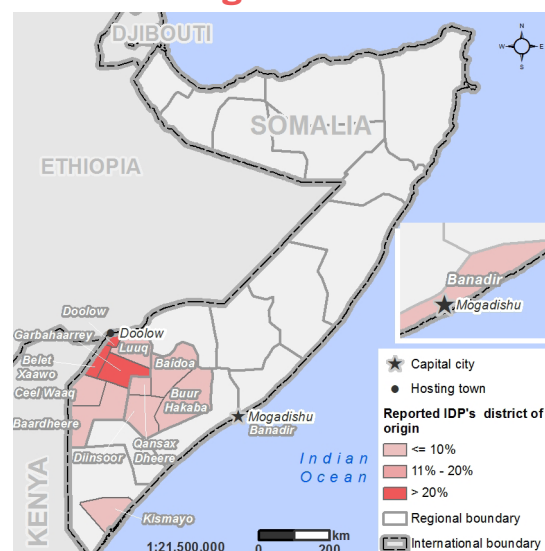
% of reported primary shelter materials:

Floor:	Earth	99%
Main structure	Wood	44%
Walls & roof	Iron sheet	42%

Note:

- 1) Households could choose multiple answers.
- 2) As reported by IDP households.

Areas of Origin

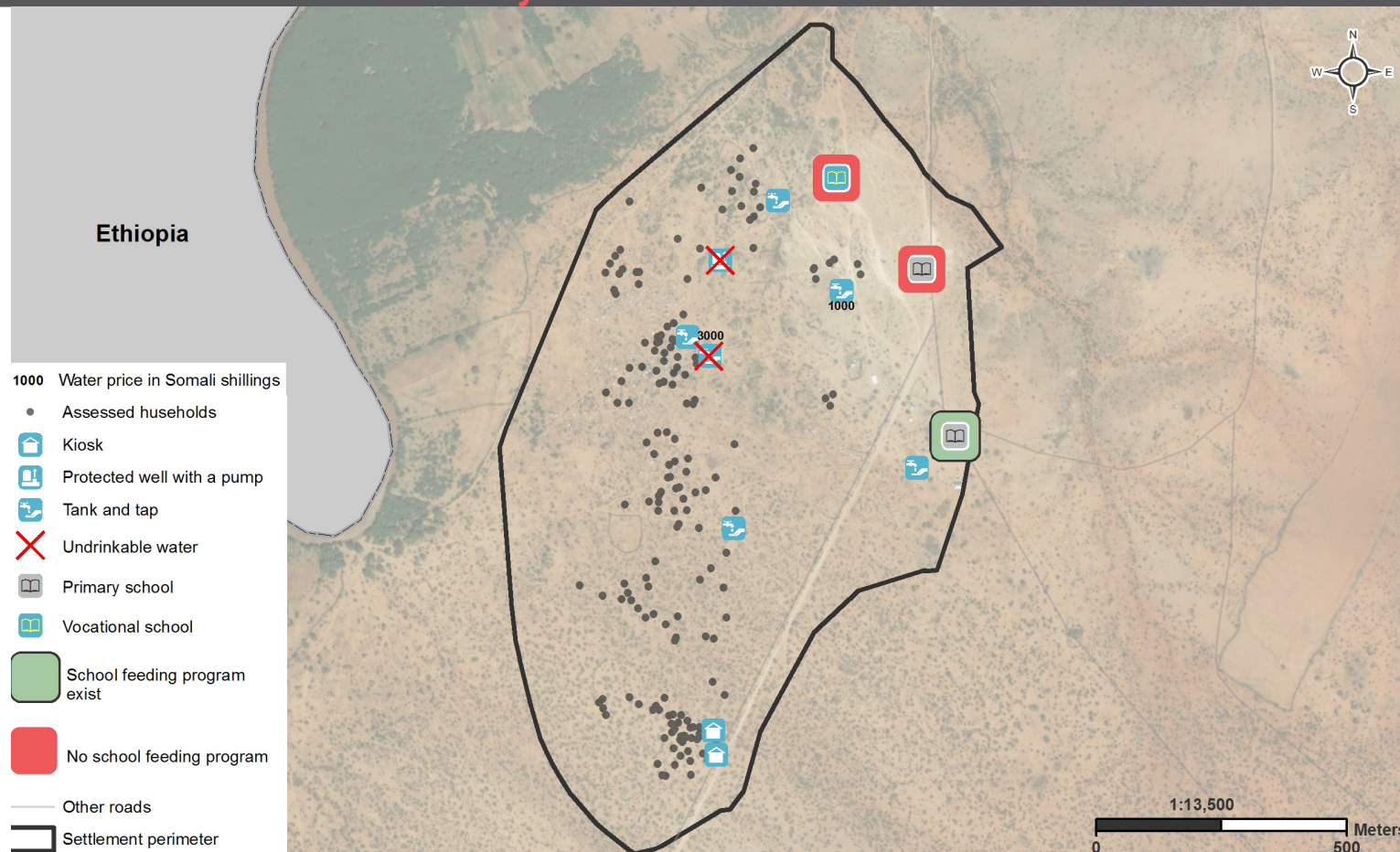


Priority Concerns

Top 3 priority needs reported by households:¹

Food	89%
Shelter	71%
Water	39%

Water and School Accessibility



Water & Sanitation

The 3 most common water sources for drinking water as reported by households:¹

- | | | |
|---|--------------|-----|
| 1 | Tank and tap | 35% |
| 2 | River | 33% |
| 3 | Piped system | 23% |

% of reported latrine types used by households:

- | | |
|-----------------|-----|
| Communal | 75% |
| Private | 6% |
| Open defecation | 19% |

Communication

3 most trusted information sources reported by HHs:¹

- | | | |
|---|--------------------|-----|
| 1 | Community leader | 60% |
| 2 | Friends and family | 60% |
| 3 | Religious leader | 54% |

Food Security

% of households reporting a change in food spending since previous month:

- | | |
|-----------|-----|
| Increase | 46% |
| Decrease | 33% |
| No change | 21% |

Average food spending per household of six members for one week: **20 USD**.
Food Minimum Expenditure Basket (MEB) for Gedo in May was **100 USD**.

Health

Health facilities available within 5 km of the assessed settlement:

- | | |
|-------------------------|---|
| Primary healthcare unit | 1 |
| Health centre | 1 |
| Pharmacy | 1 |

Livelihood

Top 3 primary livelihood sources in the past year:

- | | | |
|---|---------------------|-----|
| 1 | Day labour | 55% |
| 2 | Subsistence farming | 14% |
| 3 | Community support | 12% |

Education

Schools available within 1km of the assessed settlement:

- | | |
|------------|---|
| Primary | 2 |
| Vocational | 1 |

Average reported school dropout rate during the past school year as reported by school representatives:

- | | |
|-------|-----|
| Boys | 16% |
| Girls | 27% |

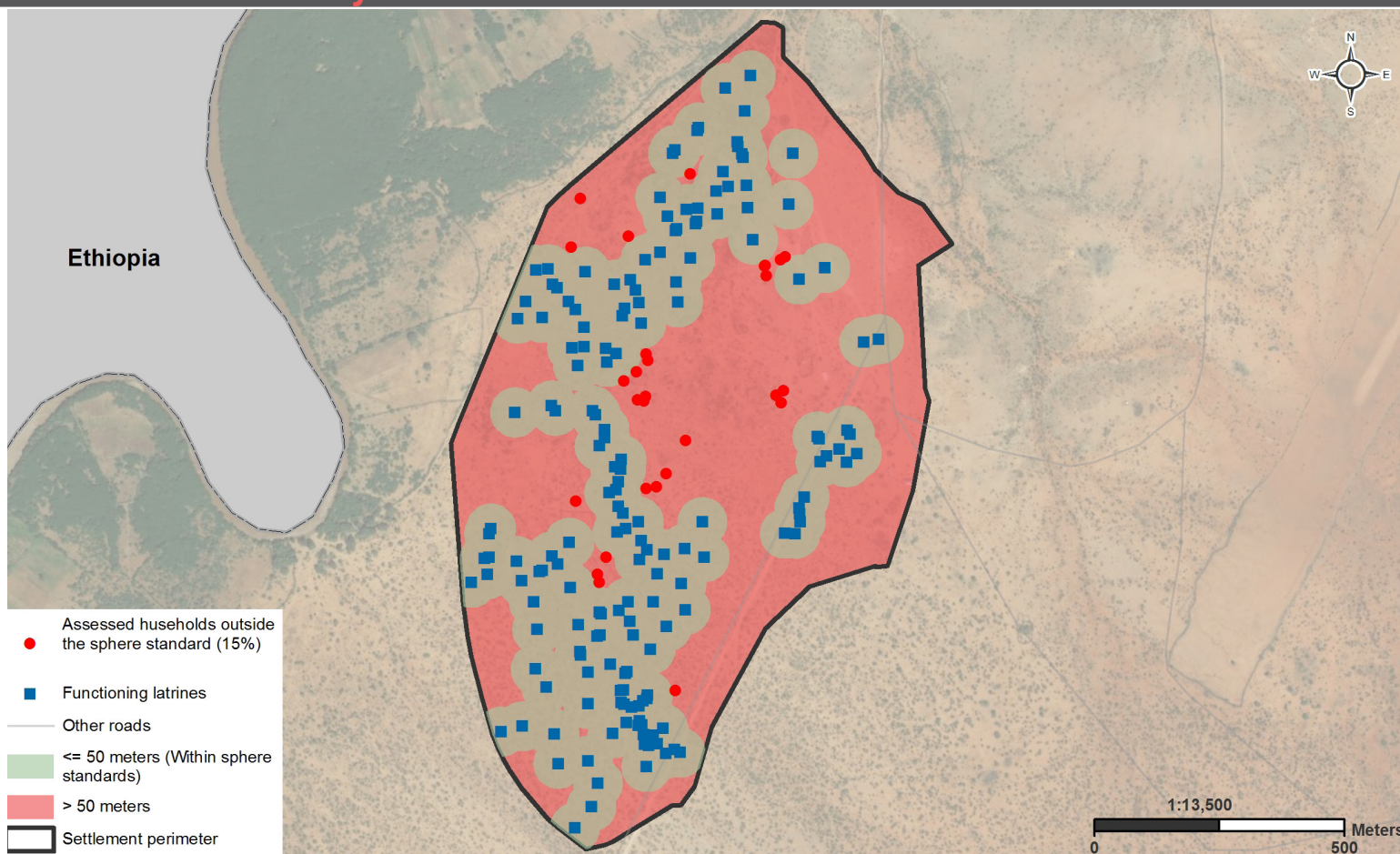
Vulnerabilities

% of households reporting the following members:

- | | |
|-----------------------------|-----|
| Pregnant/lactating women | 60% |
| Disabled or chronically ill | 11% |
| Sick children | 26% |
| Separated children | 5% |

Note: 1) Households could choose multiple answers.

Water Accessibility



Note Maps: Latrines and water points were mapped during a REACH assessment in April 2017. The number of shelters within and outside a 50m buffer of the latrines was calculated using spatial analysis. The shelters were mapped by UNOSAT using satellite image analysis.