



Bentiu - IDP Intentions Assessment

Bentiu POC, Unity State, South Sudan

South Sudan Displacement Crisis

December 2015

Methodology

These findings are based on primary data collected by REACH, between 3rd December and 7th December 2015.

REACH staff interviewed IDPs in Bentiu to understand where they come from, where they would go if they were able to leave, and what push and pull factors inform their decisions.

A random sample of 1,329 households were interviewed, providing a representative sample of the roughly 11,049 dwelling units with a confidence of 95% and a margin of error of 5% at site level.

Decision making factors

Top three factors for still living in current displacement site

1st reason

Site is secure 64%
Food distribution 13%

2nd reason

Food distribution 38%
Health services 25%

3rd reason

Food distribution 28%
Health services 24%

Peace agreement

75% % of total IDPs reported being aware of the peace agreement signed between the SPLA and the SPLA-IO

85% % of total IDPs aware of the peace agreement said that it is a strong incentive to move out of the PoC

68% % of total IDPs aware of the next formation of the transitional government in South Sudan between the SPLA and the SPLA-IO

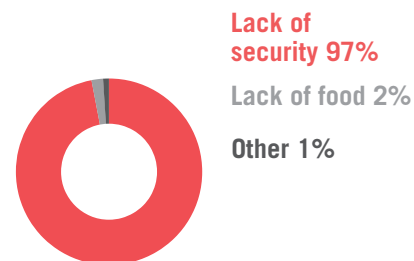
Social cohesion

Expected ease of coexistence with host community in first selected return location

Very easy 64%
Easy 21%
Difficult 4%
Very difficult 10%
Impossible 1%

Causes of Displacement

Primary reported reasons for leaving pre-crisis homes



Primary reasons for selecting current displacement site

1st reason
Access to security 75 %
2nd reason
Access to health services 48 %
3rd reason
Access to food distribution 30 %

Top three factors in preferred first return location that would enable return

1st reason
Location is secure 80%
Health services 12%
2nd reason
Health services 48%
Food distribution 27%
3rd reason
Food distribution 30%
Health services 28%

Top three factors in preferred first return location that would prevent return

1st reason
Lack of security 84%
Lack of food 9%
2nd reason
Lack of health services 51%
Lack of food 20%
3rd reason
Lack of health services 28%
Lack of food 24%

Peace factors

Top reported activities to contribute to peace in preferred first return location

	1 st	2 nd	3 rd
Official ceremony	44%	11%	16%
Peace agreement	29%	21%	35%
Traditional ceremony	7%	33%	15%
In-kind exchange	16%	19%	19%
Monetary exchange	2%	12%	7%
Inter-tribe marriages	1%	2%	3%
Other / None	1%	2%	5%

Meaning of security

89% IDPs who mentioned security as a preventative factor define security as "The absence of fighting" in their preferred first return location

Peaceful environment

80% IDPs said that the perception of peaceful environment in their preferred first return location would be a strong incentive to move out of the PoC

Access to information

Last time IDPs received information of their first selected return location

In the last week 60%
In the last month 11%
1-3 months ago 5%
4-6 months ago 2%
> 6 months ago 3%
Never 18%
No response 1%

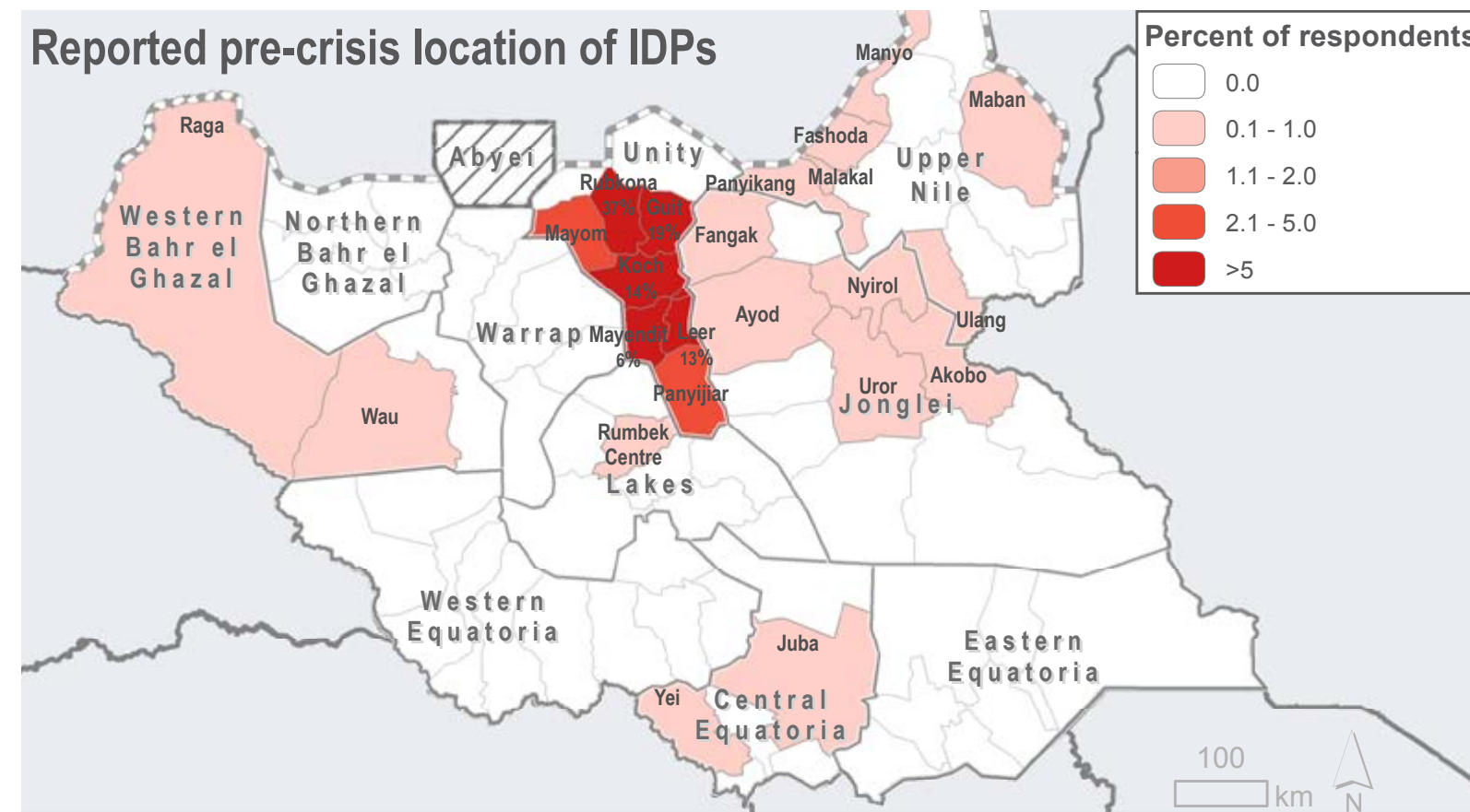
Way of accessing information about first selected return location

Satellite phone/Turaya 5%
In person 44%
Someone there 46%
Someone who is in touch* 3%
Other 2%

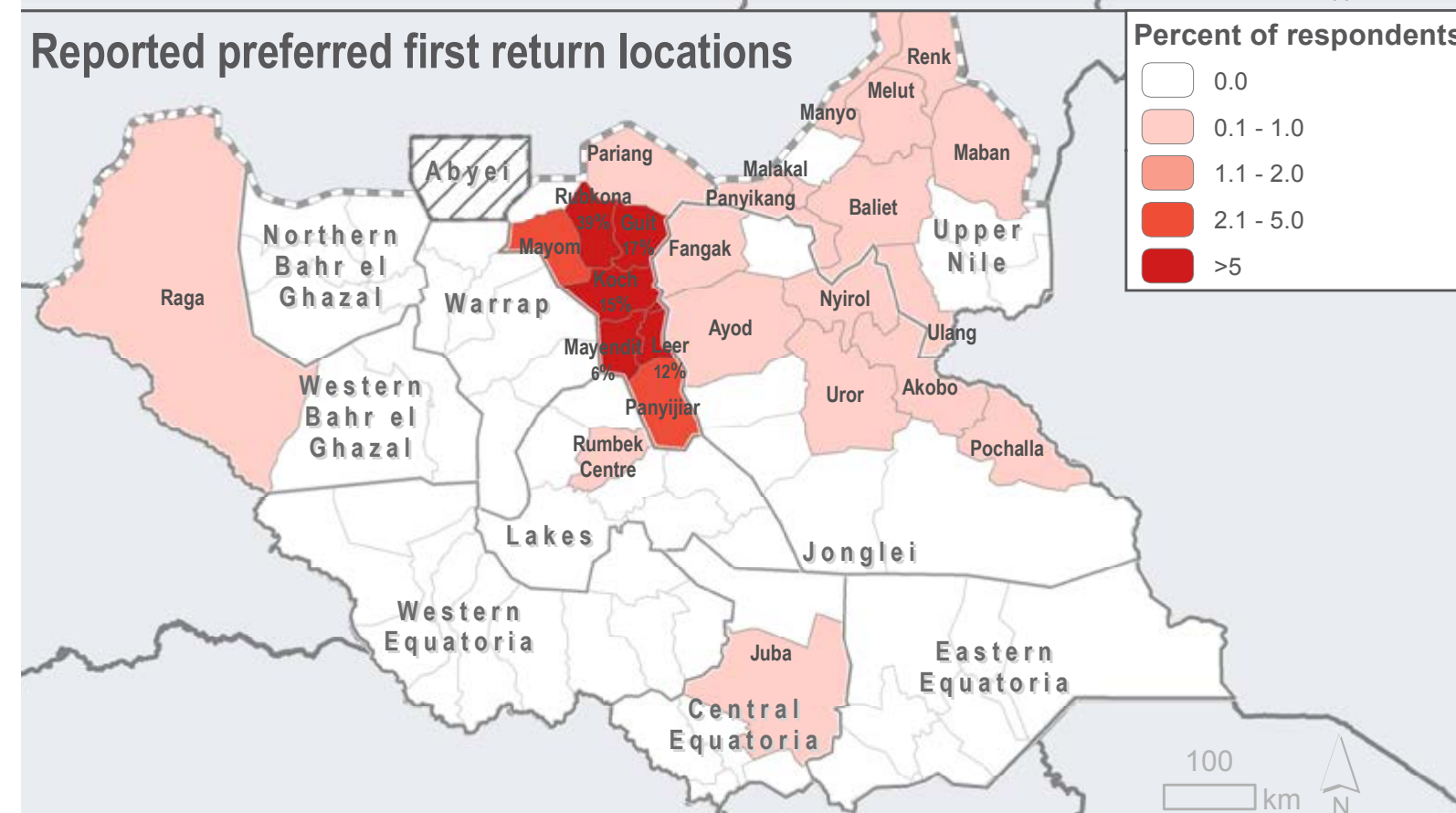
IDP pre-displacement locations and areas of desired return

29.78 E, 9.33 N

Reported pre-crisis location of IDPs



Reported preferred first return locations



* From someone who is in touch over phone/satellite/internet



CCCM CLUSTER
SUPPORTING DISPLACED COMMUNITIES

For more information on this profile please contact:
REACH Initiative, southsudan@reach-initiative.org

REACH
Informing more effective humanitarian action