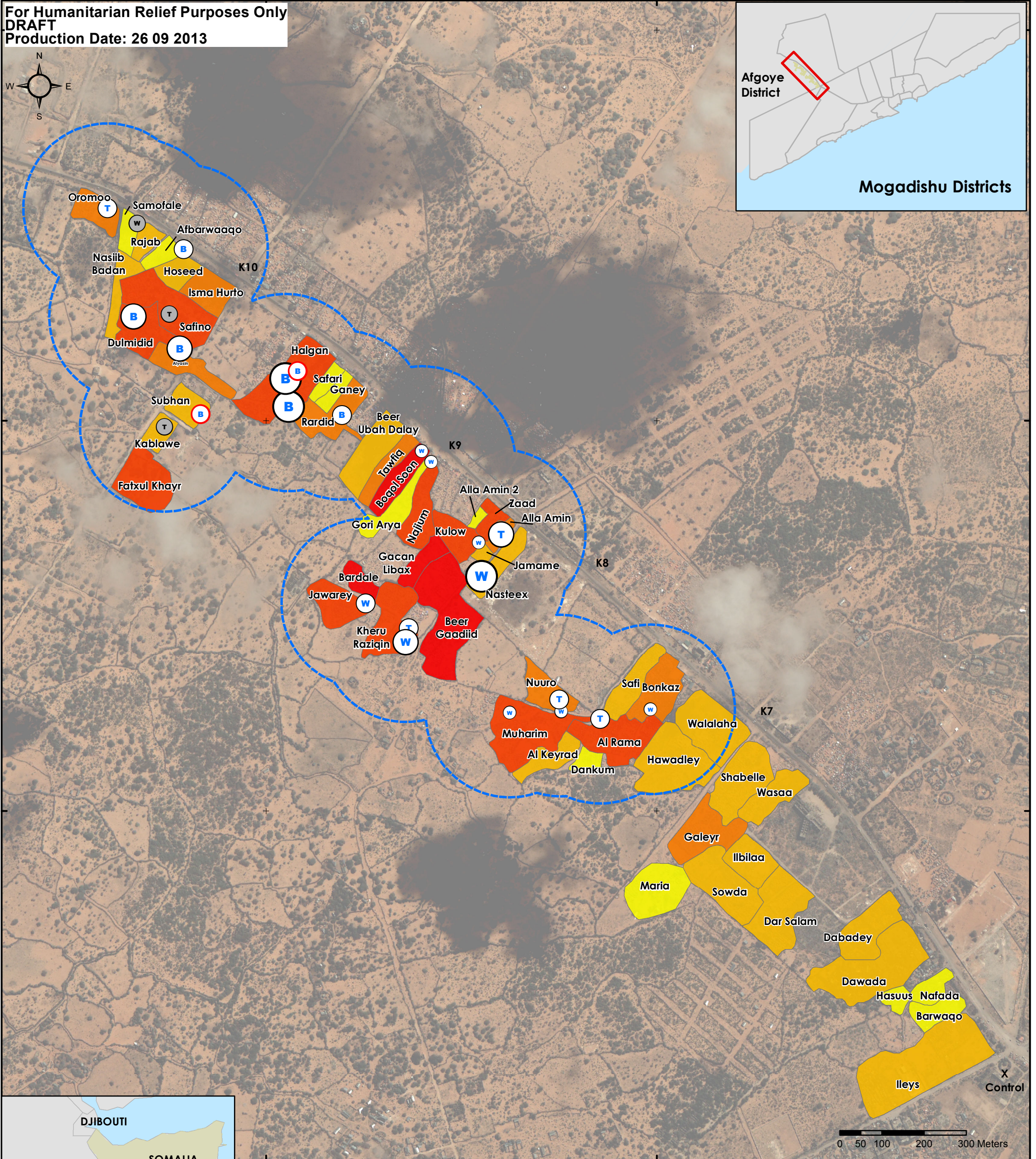


SOMALIAMogadishu - IDP Camp X Control-K13 - Dharkenley

Water Points Capacity and Distance - 15th September 2013

For Humanitarian Relief Purposes Only
DRAFT
Production Date: 26 09 2013



Type of water point

- (B) Borehole
- (W) Shallow well
- (T) Tank

Capacity per water point (liters/day)

- 60 - 800
- 801 - 2000
- 2001 - 5000
- 5001 - 10000

Legend:

- Capacity unknown
- Non functional water point
- Buffer area of 200 meters around the water points
- Safi Umbrella boundaries and name

Population estimate (number of people)

- 271 - 814
- 815 - 1695
- 1696 - 2610
- 2611 - 3526
- 3527 - 4746

Funded by

European Union

USAID
FROM THE AMERICAN PEOPLE

Humanitarian Aid and Civil Protection

Data Sources:
Umbrella areas, water points and estimate population: Reach Assessment;
Administrative Boundaries: OCHA
Background image: QB / WV01 / WV02, 3 June 2013
Coordinate System: GCS WGS 1984
File: SOM_Mogadishu_XControl-K13_Dharkenley_Water_capacity_26SEP2013_A3
Contact: reach.mapping@impact-initiatives.org
Note: Data, designations and boundaries contained on this map are not warranted to error-free and do not imply acceptance by the REACH partners, associates, donors mentioned on this map.