

70,480 individuals in camp

Key findings

- Latrines**
 - 0 latrines were reported in 71 blocks in phase 7. This phase was previously uninhabited before late February 2019.
 - 0 latrines were reported in 24 blocks in phase 5. This phase was uninhabited before early January 2019.
 - 68% of latrines reportedly need repair in phase 4, which is the highest concentration of latrines needing repair of phases in the camp.
 - 54% of latrines reportedly need repair in phase 3, the second highest concentration of latrines needing repair in the camp.
- Bathing facilities**
 - 0 bathing facilities were reported in 74 blocks in phase 5, which is 69% of assessed locations in the phase.
 - 0 bathing facilities were reported in 54 blocks in phase 7, which is 73% of assessed locations in the phase.
 - 72% of bathing facilities in phase 4 extension reportedly need repair
- Water tanks**
 - 40 blocks reportedly had no water tanks in phase 7, the highest number of no water tanks reported in the camp.

Mapping Methodology:

Phases 1,2,3,4,5: Assessment teams gathered WASH information and a GPS coordinate in the middle of every identified block.

Phase 7: Assessment teams gathered WASH information and a GPS coordinate in the middle of every identified block. In addition, WASH information and a GPS coordinate was collected for every identified WASH infrastructure inside communal areas.

Annexes: WASH information and a GPS coordinate were collected only when WASH infrastructure was identified.

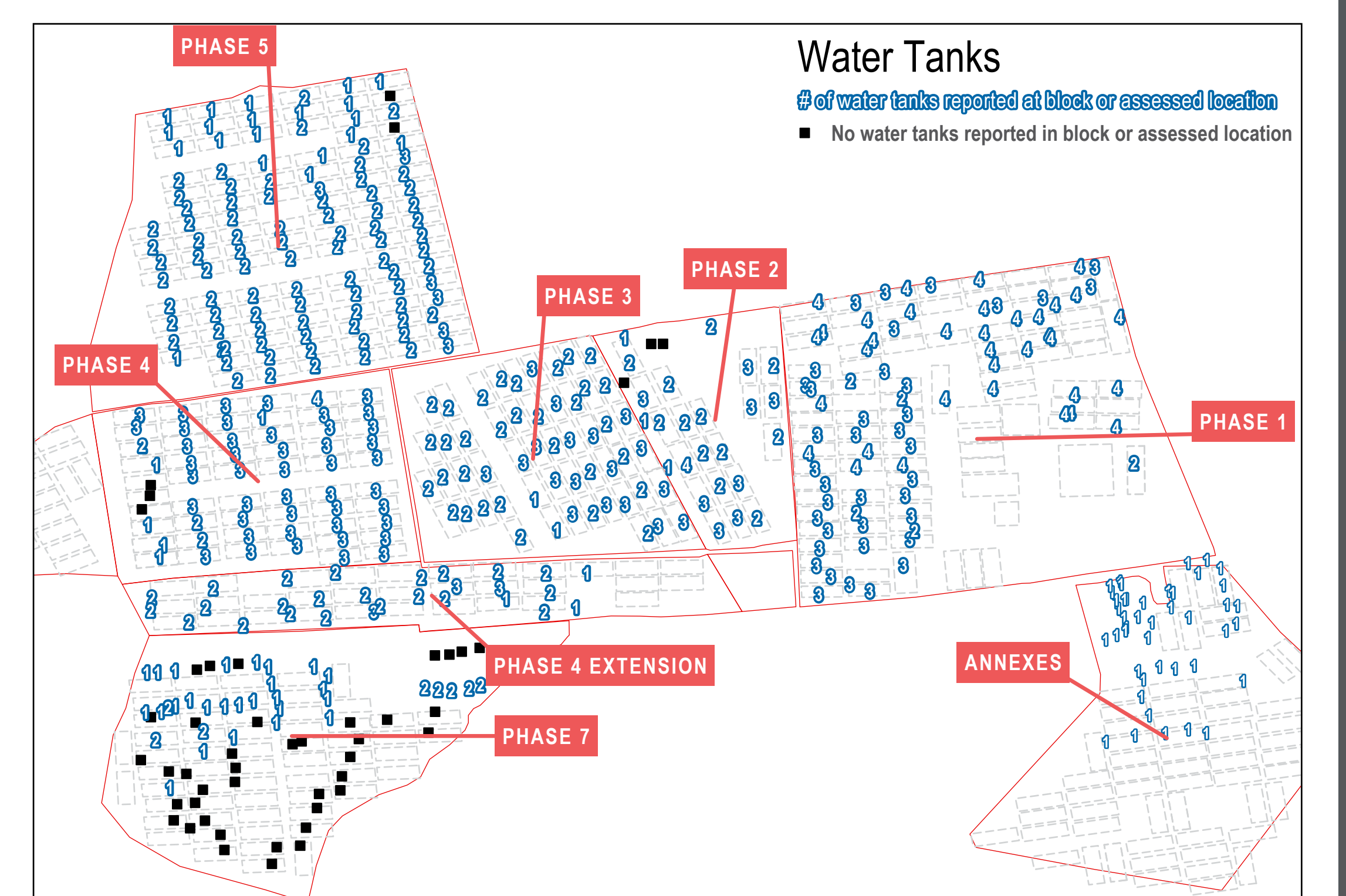
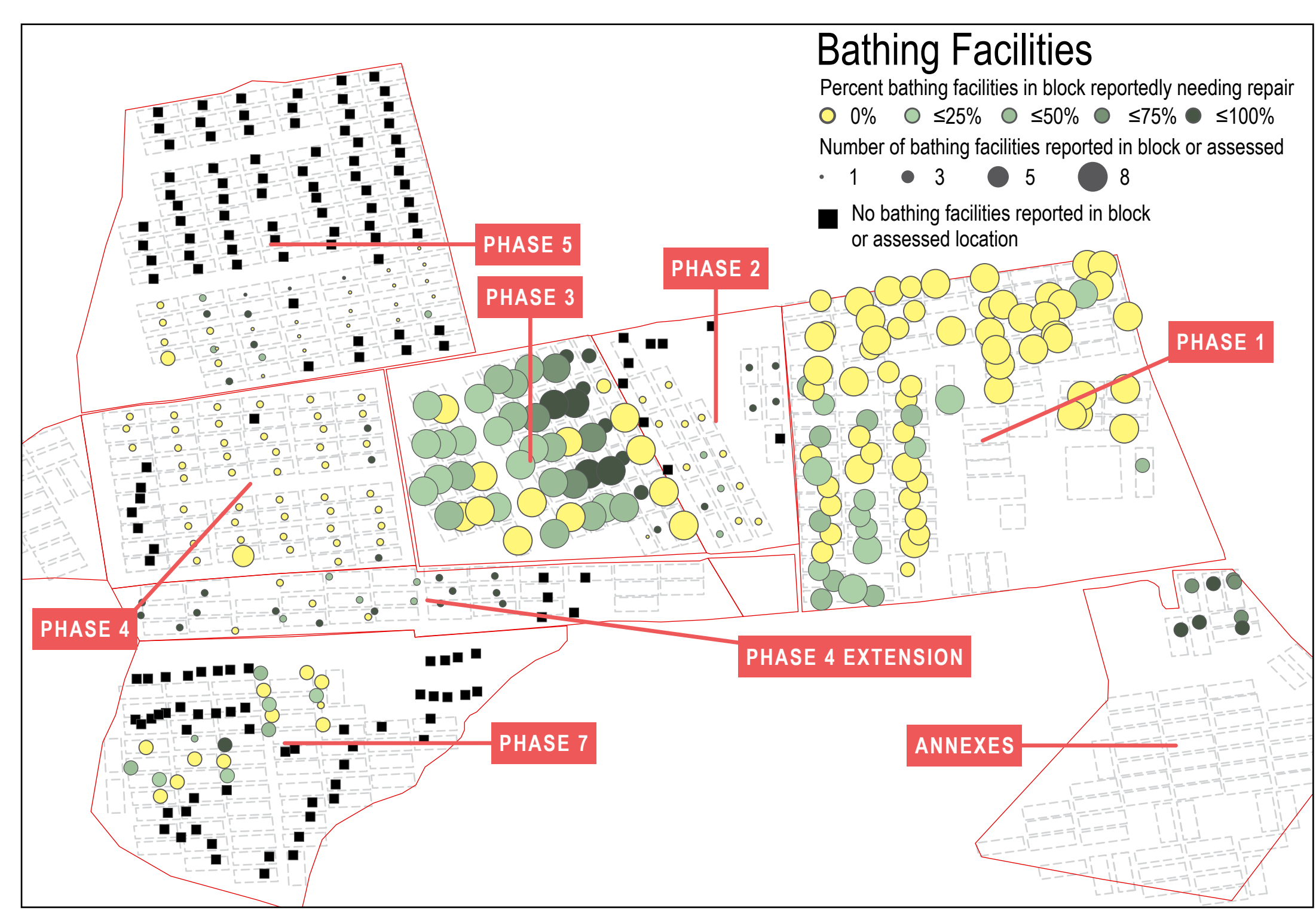
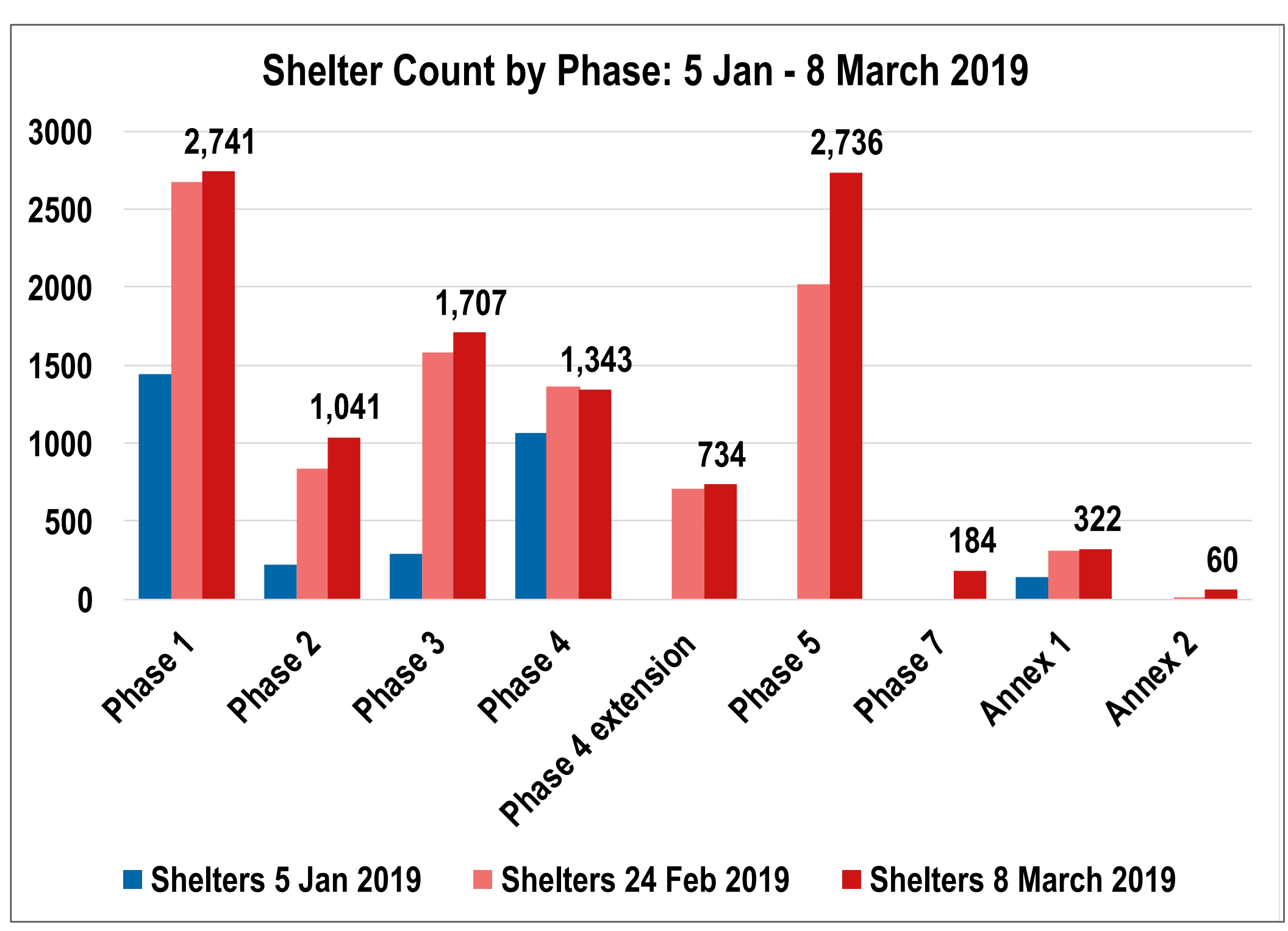
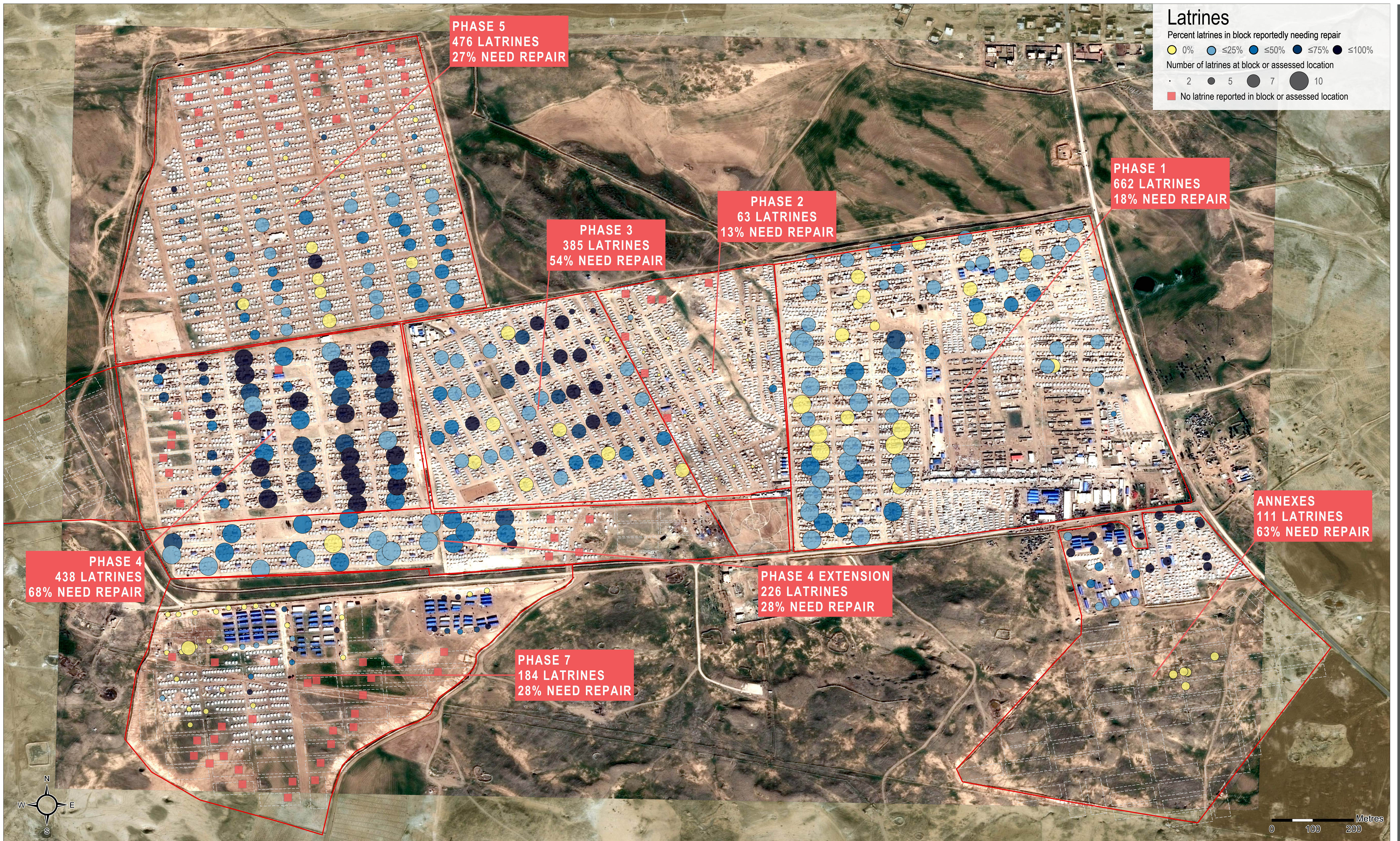
Data Sources:

WASH assessment: Data collected from 14-19 March, 2019 by NES WASH working group

Background Satellite Image: Pleiades from 8 March 2019
Copyright: CNES Source: Airbus DS

Shelter counts: UNOSAT and REACH Initiative

Population: OCHA- SYRIA: HUMANITARIAN RESPONSE IN AL HOL CAMP Flash update #9



Note: Data, designations and boundaries contained on this map are not warranted to be error-free and do not imply acceptance by the REACH partners, associated, donors mentioned on this map.