



# South Sudan - Water, Sanitation and Hygiene (WASH)

## Assessment of Hard-to-Reach Areas in South Sudan

South Sudan Displacement Crisis

April 2021

### Overview

The continuation of conflict since December 2013 has created a complex humanitarian crisis in the country, restricting humanitarian access and hindering the flow of information required by aid partners to deliver humanitarian assistance to populations in need. To address information gaps faced by the humanitarian response in South Sudan, REACH employs its Area of Knowledge (AoK) methodology to collect relevant information in hard-to-reach areas to inform humanitarian planning and interventions outside formal settlement sites.

Using the AoK methodology, REACH remotely monitors needs and access to services in the

Greater Upper Nile, Greater Equatoria and Greater Bahr el Ghazal regions. AoK data is collected monthly, through multi-sector interviews with the following typology of key informants (KIs):

- KIs who are newly arrived internally displaced persons (IDPs) who have left a hard-to-reach settlement in the last month
- KIs who have been in contact with someone living in a hard-to-reach settlement, or have been visiting one in the last month (traders, migrants, family members, etc.)
- KIs who are remaining in hard-to-reach settlements, contacted through phone

Selected KIs are purposively sampled and have knowledge from within the last month about a specific settlement in South Sudan, with data collected at the settlement level. About half of settlements assessed have more than one KI reporting on the settlement. In these cases, data is aggregated at the settlement level according to a weighting mechanism, which can be found in the [Terms of Reference \(ToRs\)](#).

All percentages presented in this factsheet, unless otherwise specified, represent the proportion of settlements assessed with that specific response.

The findings presented in this factsheet are indicative of the broad water, sanitation and hygiene (WASH)

trends in assessed settlements in April 2021, and are not statistically generalisable.

### Assessment Coverage

**2,477** Key informants interviewed

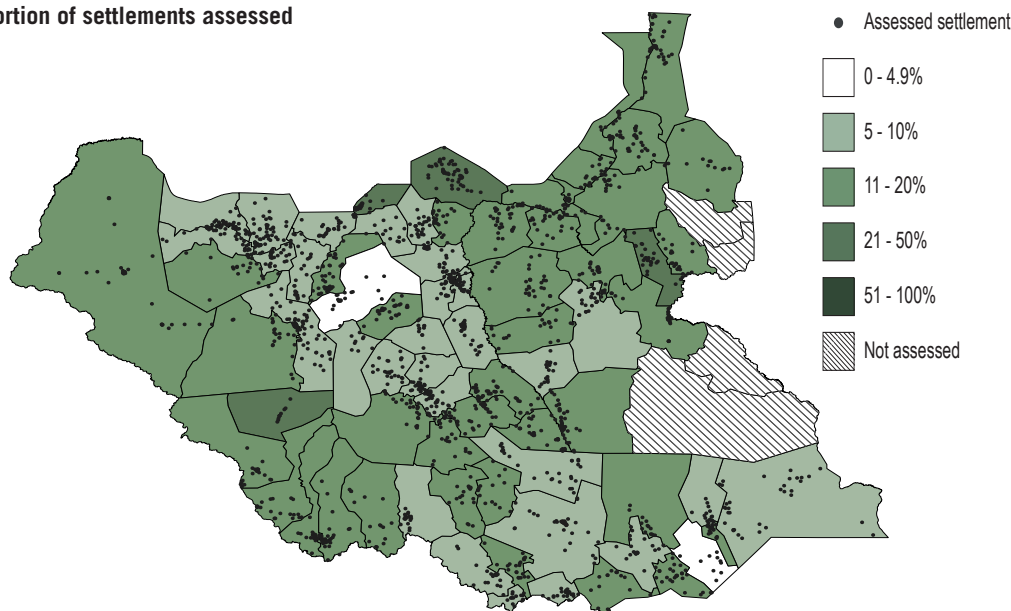
**1,976** Settlements assessed

**74** Counties assessed

**72** Counties with 5% or more coverage<sup>1</sup>

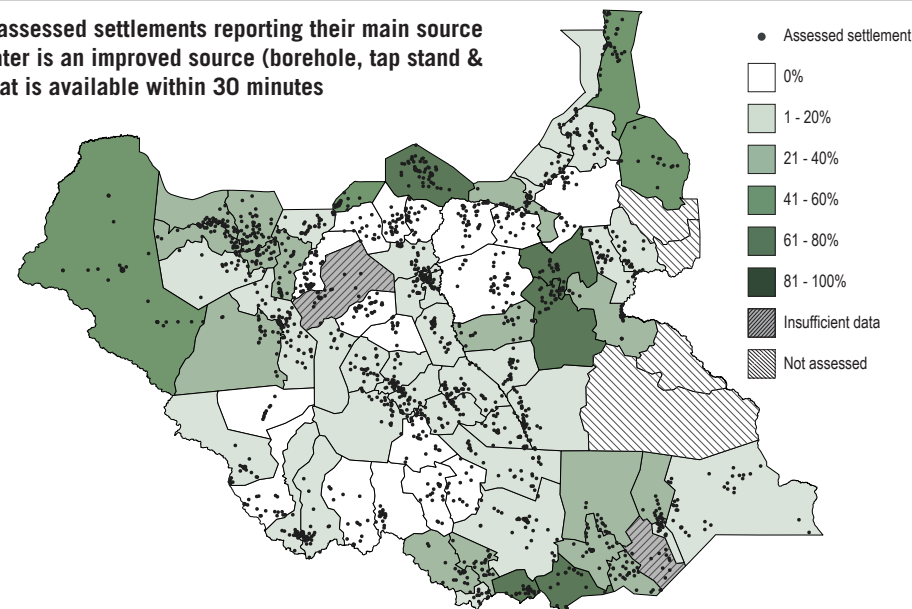
### Assessment coverage

#### Proportion of settlements assessed



### Improved Water Sources

#### Proportion of assessed settlements reporting their main source of drinking water is an improved source (borehole, tap stand & water-yard) that is available within 30 minutes



<sup>1</sup> Data is only represented for counties in which at least 5% of settlements have been assessed. The most recent [OCHA Common Operational Dataset \(COD\)](#) released in March 2019 has been used as the reference for settlement names and locations.



# South Sudan - Water, Sanitation and Hygiene (WASH)

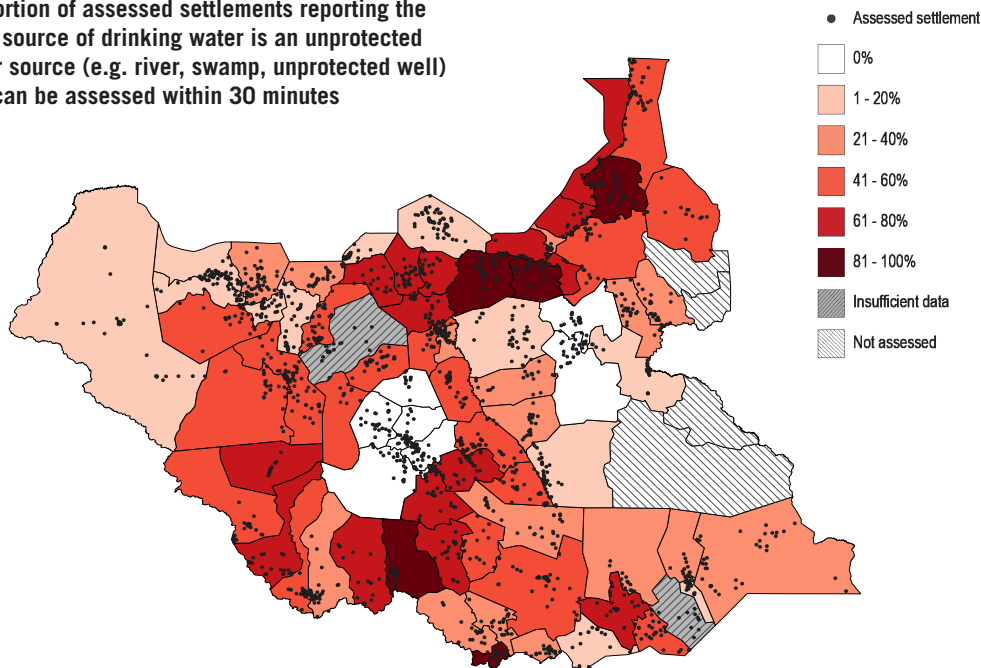
## Assessment of Hard-to-Reach Areas in South Sudan

South Sudan Displacement Crisis

April 2021

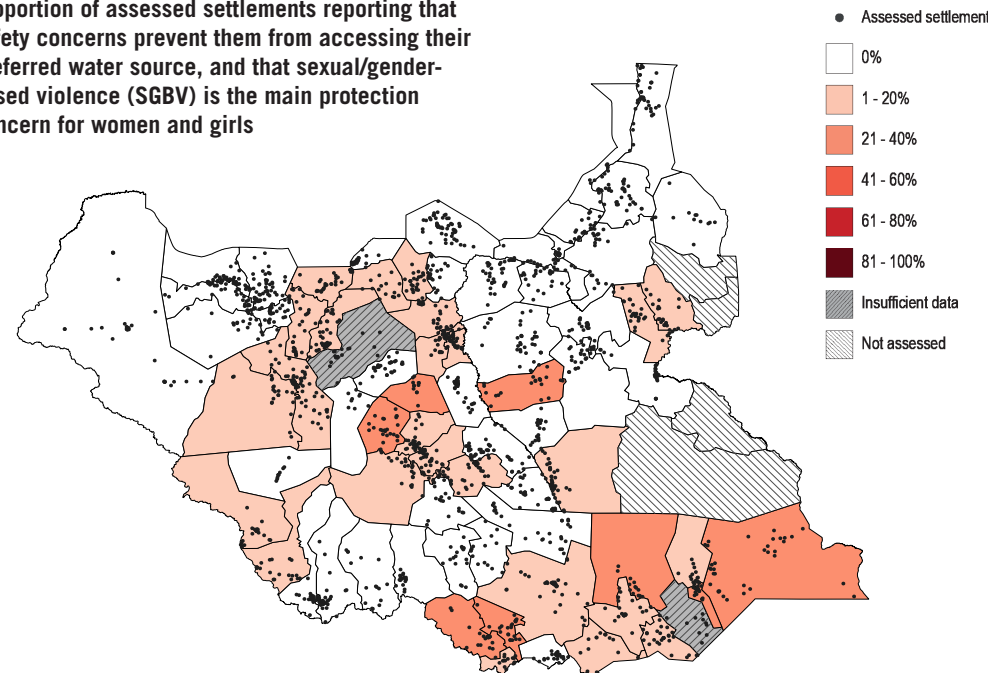
### Access to water

Proportion of assessed settlements reporting the main source of drinking water is an unprotected water source (e.g. river, swamp, unprotected well) that can be accessed within 30 minutes



### Safe water access and sexual and gender based violence (SGBV)

Proportion of assessed settlements reporting that safety concerns prevent them from accessing their preferred water source, and that sexual/gender-based violence (SGBV) is the main protection concern for women and girls



### Drinking water source

Top five counties where the highest proportion of settlements reported that the main source of drinking water is an unprotected water source (e.g. river, swamp, unprotected well)

Fangak	100%	<div></div>
Canal/Pigi	100%	<div></div>
Morobo	92%	<div></div>
Melut	90%	<div></div>
Maridi	84%	<div></div>

No other county where 100% of assessed settlements reported that the main source of drinking water is an unprotected water source

### Water access time

Top five counties where the highest proportion of assessed settlements reported that most people need more than 30 minutes to access and return from their preferred drinking water

Magwi	80%	<div></div>
Nyirrol	64%	<div></div>
Uror	62%	<div></div>
Kajo-keji	62%	<div></div>
Pariang	61%	<div></div>

### Handwashing

Top five counties where the highest proportion of assessed settlements reported most people do not wash their hand with soap

Baliet	100%	<div></div>
Malakal	81%	<div></div>
Wau	76%	<div></div>
Bor South	72%	<div></div>
Panyikang	71%	<div></div>

### Protection and water access

Top five counties where the highest proportion of assessed settlements reported that safety concerns prevent people from accessing their preferred water source

Luakpiny/Nasir	78%	<div></div>
Ulang	55%	<div></div>
Tonj South	44%	<div></div>
Lainya	38%	<div></div>
Lafon	38%	<div></div>



# South Sudan - Water, Sanitation and Hygiene (WASH)

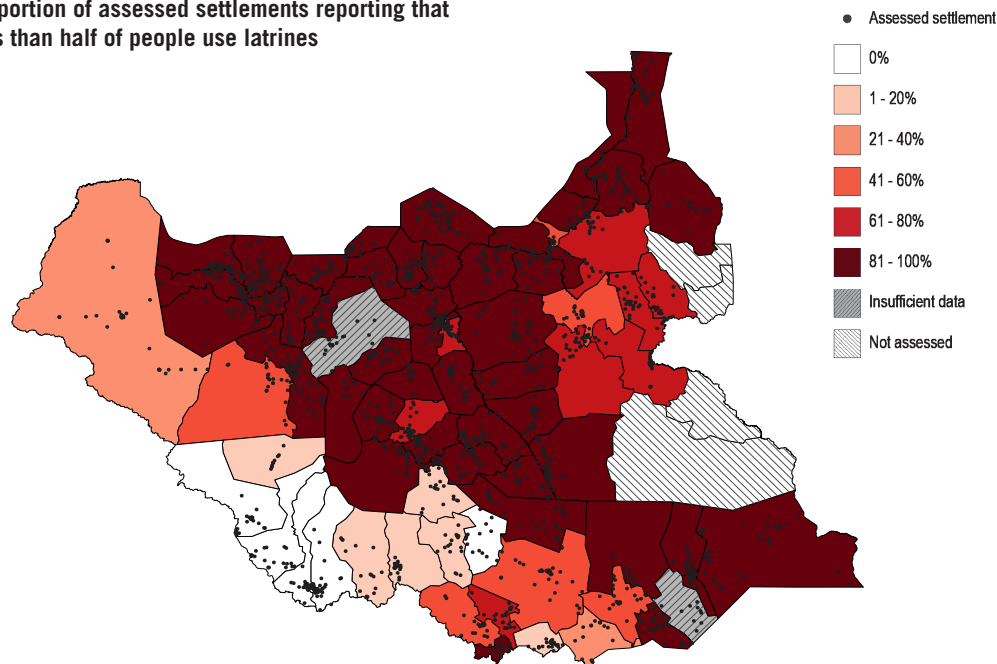
## Assessment of Hard-to-Reach Areas in South Sudan

South Sudan Displacement Crisis

April 2021

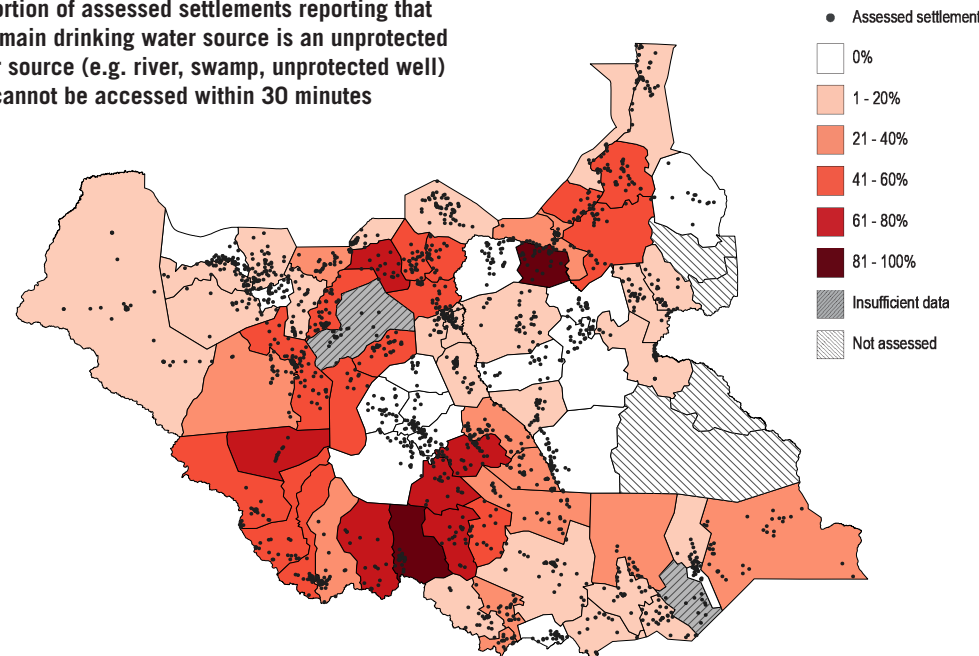
### Latrine use

Proportion of assessed settlements reporting that less than half of people use latrines



### Access and distance to water source

Proportion of assessed settlements reporting that their main drinking water source is an unprotected water source (e.g. river, swamp, unprotected well) that cannot be accessed within 30 minutes



### Overcrowded latrines

Top five counties where the highest proportion of assessed settlements reported that overcrowding prevents people from using latrines

Uror	60%	<div></div>
Raja	59%	<div></div>
Nyiröl	52%	<div></div>
Aweil West	48%	<div></div>
Luakpiny/Nasir	41%	<div></div>

### Latrine availability

Top five counties where the highest proportion of assessed settlements reported that latrines are unavailable

Kapoeta North	94%	<div></div>
Yirol East	93%	<div></div>
Gogrial East	92%	<div></div>
Manyo	91%	<div></div>
Aweil South	89%	<div></div>

### WASH based health concerns

Top five counties where the highest proportion of assessed settlements reported diarrheal diseases is the main health problem

Melut	45%	<div></div>
Nzara	39%	<div></div>
Aweil South	39%	<div></div>
Tonj South	33%	<div></div>
Aweil North	27%	<div></div>

Top five counties where the highest proportion of assessed settlements reported malaria is the main health problem

Manyo	100%	<div></div>
Maban	100%	<div></div>
Baliet	100%	<div></div>
Pariang	98%	<div></div>
Abiemnhom	95%	<div></div>