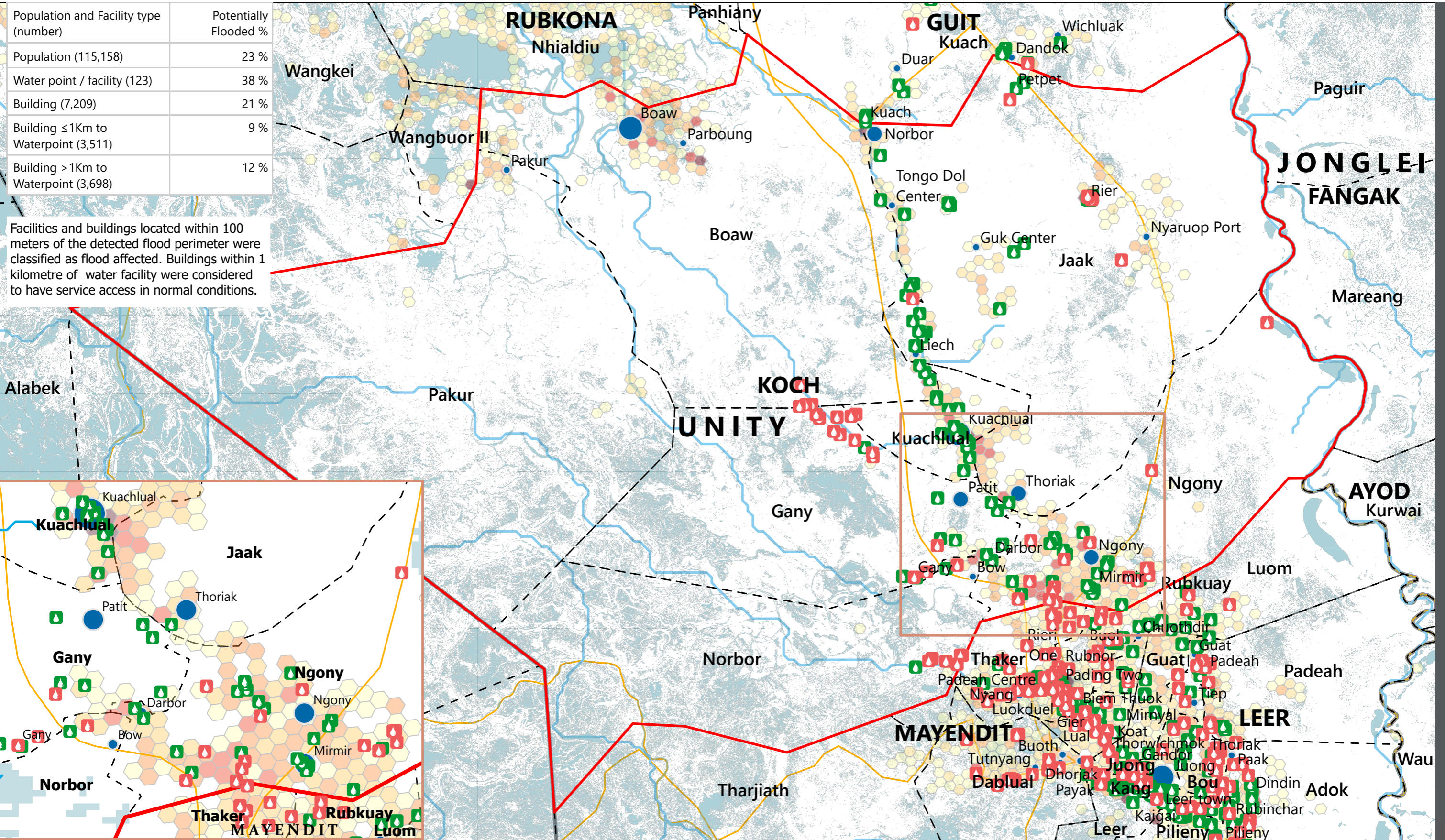


# SOUTH SUDAN - Koch County

## Flood Impact Map: Water Facilities (October 2025)

For Humanitarian Purposes Only  
Production Date: 22 October 2025



Population (Kontur, 2023)

1 - 100
101 - 250
251 - 500
501 - 750
> 750

- Satellite-detected flood extent (FEWSNET, as of 30th September 2025)
- Unaffected Waterpoint
- Potentially Affected Waterpoint

- Settlements (Population)
- < 5,000
  - 5,001 - 10,000
  - > 10,000

- Roads
- River
- Payam
- County
- State



Data sources: Source: REACH, OCHA, UNMISS, IOM, DTM, UNOSAT, FEWSNET, WHO, IOM, DTM, Global Google-Microsoft Open Buildings Dataset (2023)  
Coordinate System: Name: GCS WGS 1984  
File: REACH\_SSD\_Map\_Unity\_Koch\_Flood\_Impact\_Water\_22\_Oct\_2025  
Contact: reach.mapping@impact-initiatives.org

Note: Data, designations and boundaries contained on this map are not warranted to be error-free and do not imply acceptance by REACH partners, associates or donors mentioned on this map.