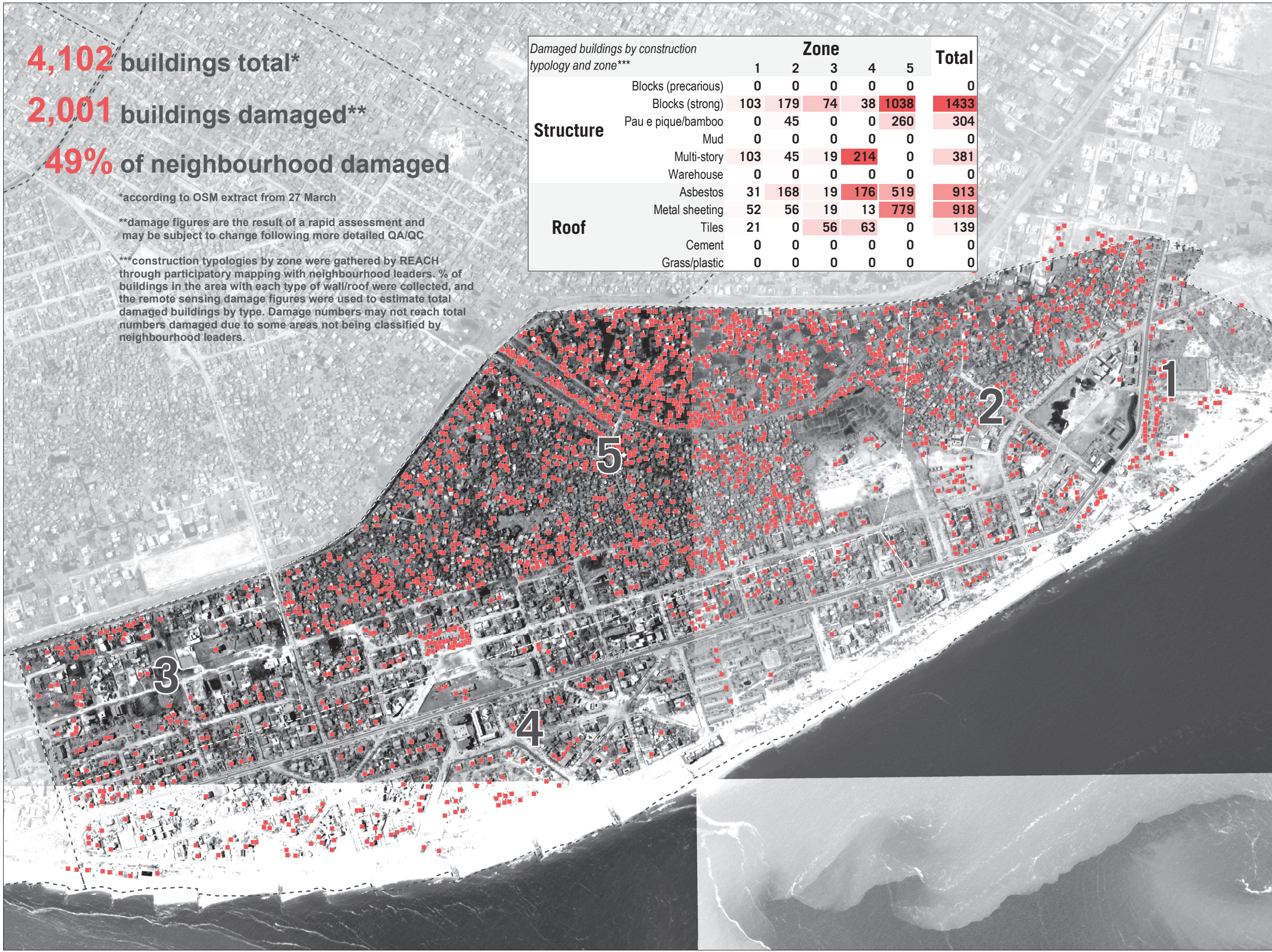


MOZAMBIQUE - Beira City

Macuti - Structural Damage by Construction Typology - As of 26 March 2019



4,102 buildings total*

2,001 buildings damaged**

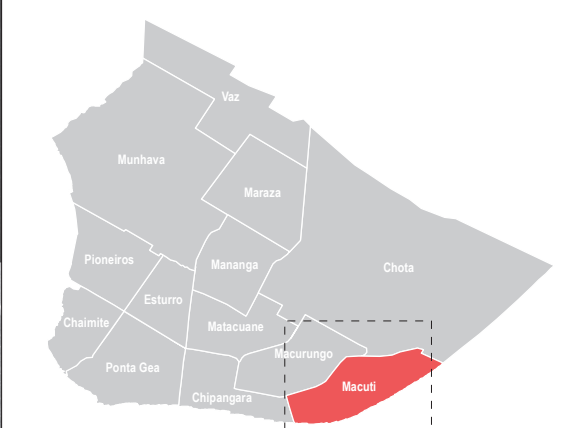
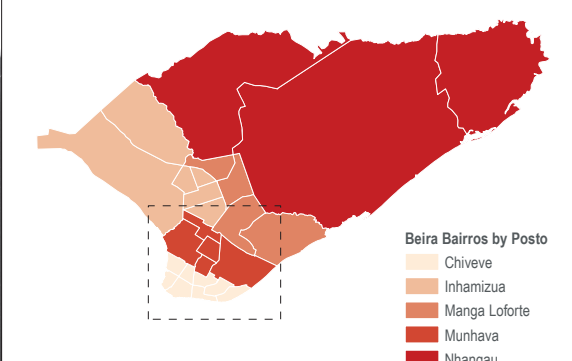
49% of neighbourhood damaged

*according to OSM extract from 27 March

**damage figures are the result of a rapid assessment and may be subject to change following more detailed QA/QC

***construction typologies by zone were gathered by REACH through participatory mapping with neighbourhood leaders. % of buildings in the area with each type of wall/roof were collected, and the remote sensing damage figures were used to estimate total damaged buildings by type. Damage numbers may not reach total numbers damaged due to some areas not being classified by neighbourhood leaders.

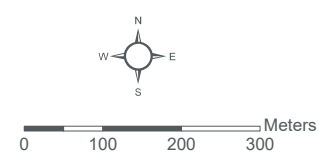
		Zone					Total
Damaged buildings by construction typology and zone***		1	2	3	4	5	
Structure	Blocks (precarious)	0	0	0	0	0	0
	Blocks (strong)	103	179	74	38	1038	1433
	Pau e pique/bamboo	0	45	0	0	260	304
	Mud	0	0	0	0	0	0
	Multi-story	103	45	19	214	0	381
Roof	Warehouse	0	0	0	0	0	0
	Asbestos	31	168	19	176	519	913
	Metal sheeting	52	56	19	13	779	918
	Tiles	21	0	56	63	0	139
	Cement	0	0	0	0	0	0
	Grass/plastic	0	0	0	0	0	0



Data sources:
Damage sites - UNOSAT-REACH
Beira Bairros - INGC
Bairros Delineation - REACH
Administrative Boundaries (0-3) - OCHA
Satellite Imagery: WorldView-2 from 26 March 2019
Copyright: ©DigitalGlobe 2019
Source: US Dept of State Humanitarian Information Unit, NextView License

Legend

- Damaged Buildings
- - - Bairros



Coordinate System: GCS WGS 1984
File: MOZ_Map_CycloneIdai_Beira_DamageByType_Macuti_30APR2019
Contact: reach.mapping@impact-initiatives.org

Note: Data, designations and boundaries contained on this map are not warranted to be error-free and do not imply acceptance by the REACH partners, associated, donors mentioned on this map.