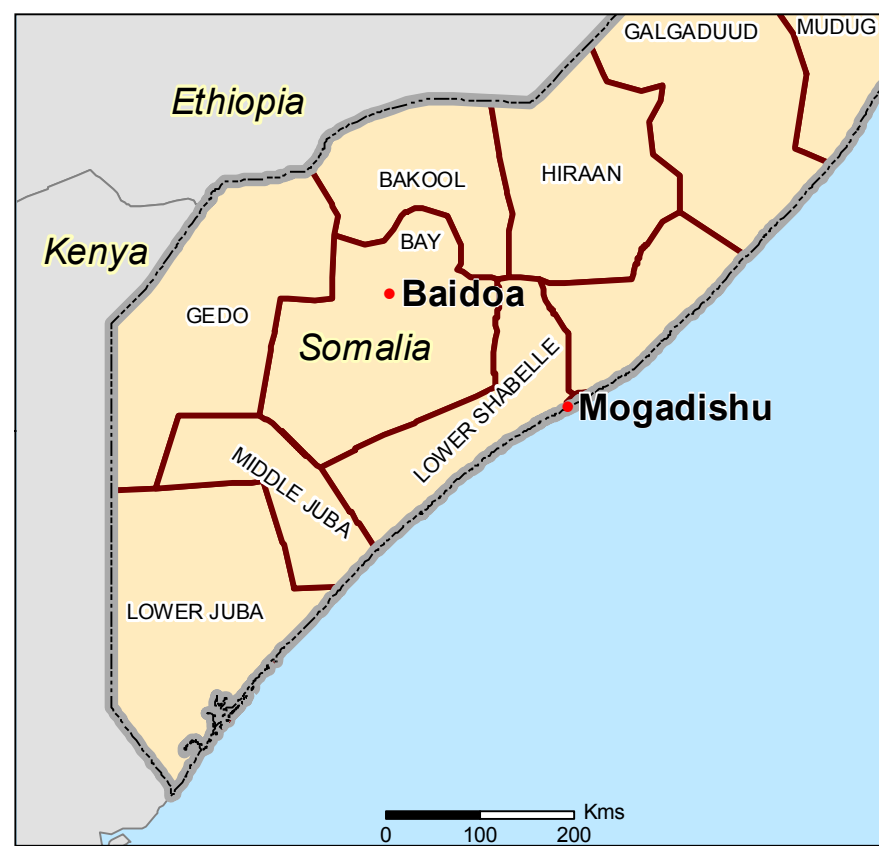
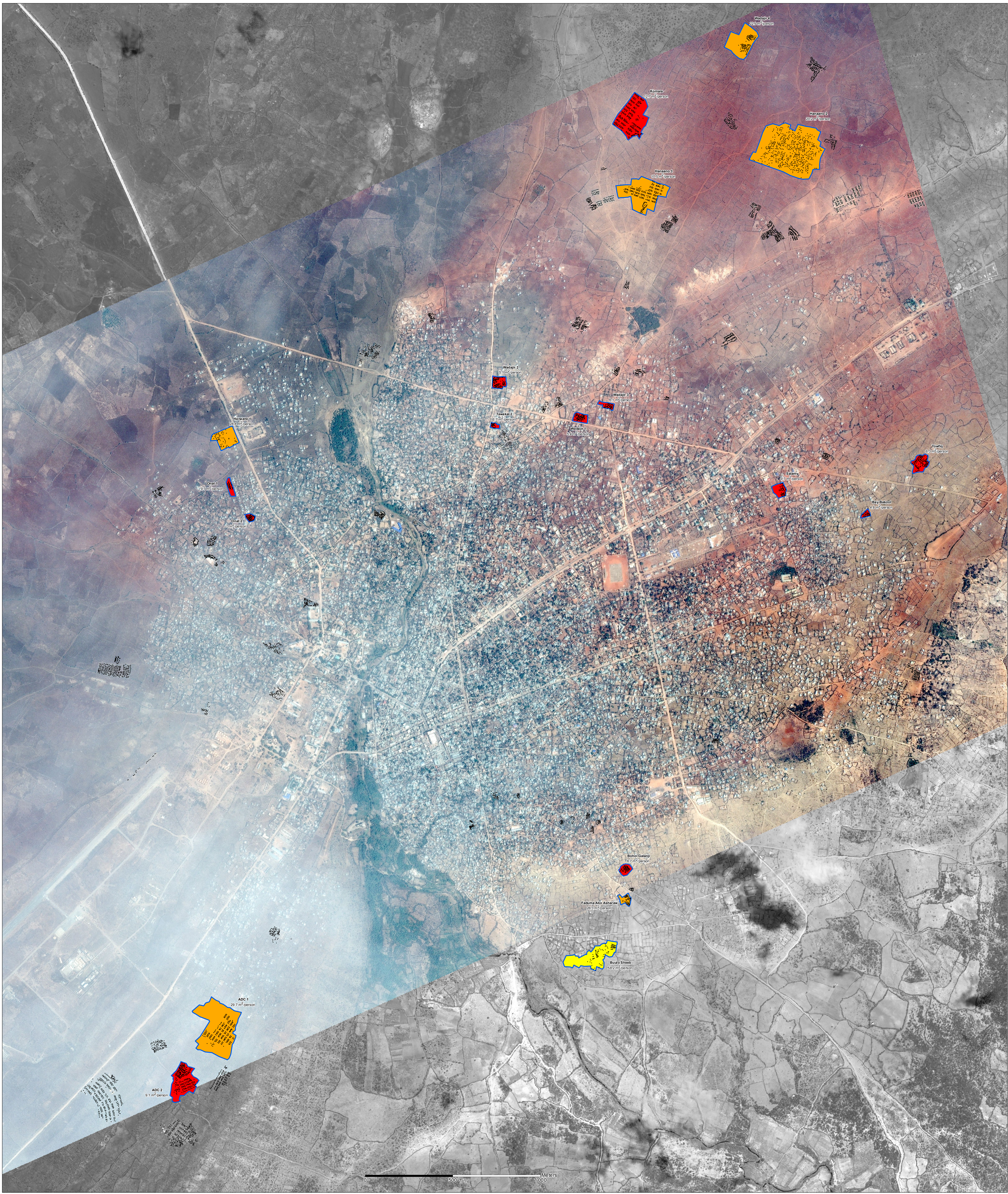


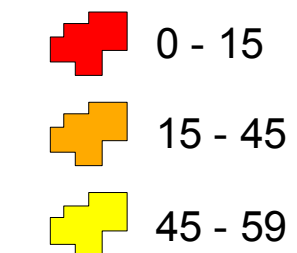
Somalia - Baidoa - IDP Settlement

Surface Area of Settlement per person (December 2013)

For humanitarian relief purpose only
Production date : 21 March 2014



Surface Area per Person per Settlement (m²/person)



Standard Sphere project (2004), UNHCR (2007)

Space required: Minimum surface area of camp per person = 45 m2, including infrastructure

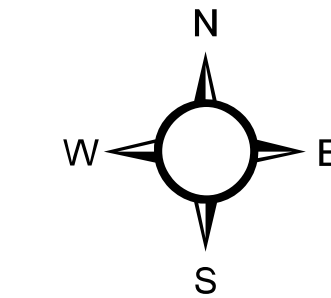
- Shelter (UNOSAT analysis)
- Assessed IDP Settlement
- Main City
- International Boundary
- Region

Data sources:
Facilities and IDP sections: REACH assessment
Shelters: Shelter UNOSAT analysis (21.08.2013 - 08.02.2014)
Admin level: OCHA COD
Imagery (1): 08 February 2014 (Pleiades/50 cm)
Copyright : CNES 2013 - Distribution Astrium Services /Spot Image
Imagery (2): 21 August 2013 (WorldView-1/50cm)
Copyright : US Dept of State, Humanitarian Information Unit, NextView License
Coordinate System: GCS WGS 1984
File: SOM_Baidoa_SurfacebyPers_21mars2014_A0
Contact : reach.mapping@impact-initiatives.org

The assessment does not cover all IDP settlements in Baidoa town. Areas of assessment represent only those identified by the clusters as priorities. The remaining shelters have not been assessed but may be interesting for future intervention by actors.

Note: Data, designations and boundaries contained on this map are not warranted to error-free and do not imply acceptance by the REACH partners and associated donors mentioned on this map. For Humanitarian purposes only.

Scale map A0: 7000



Funded by



REACH An initiative of IMPACT Initiatives ACTED and UNOSAT