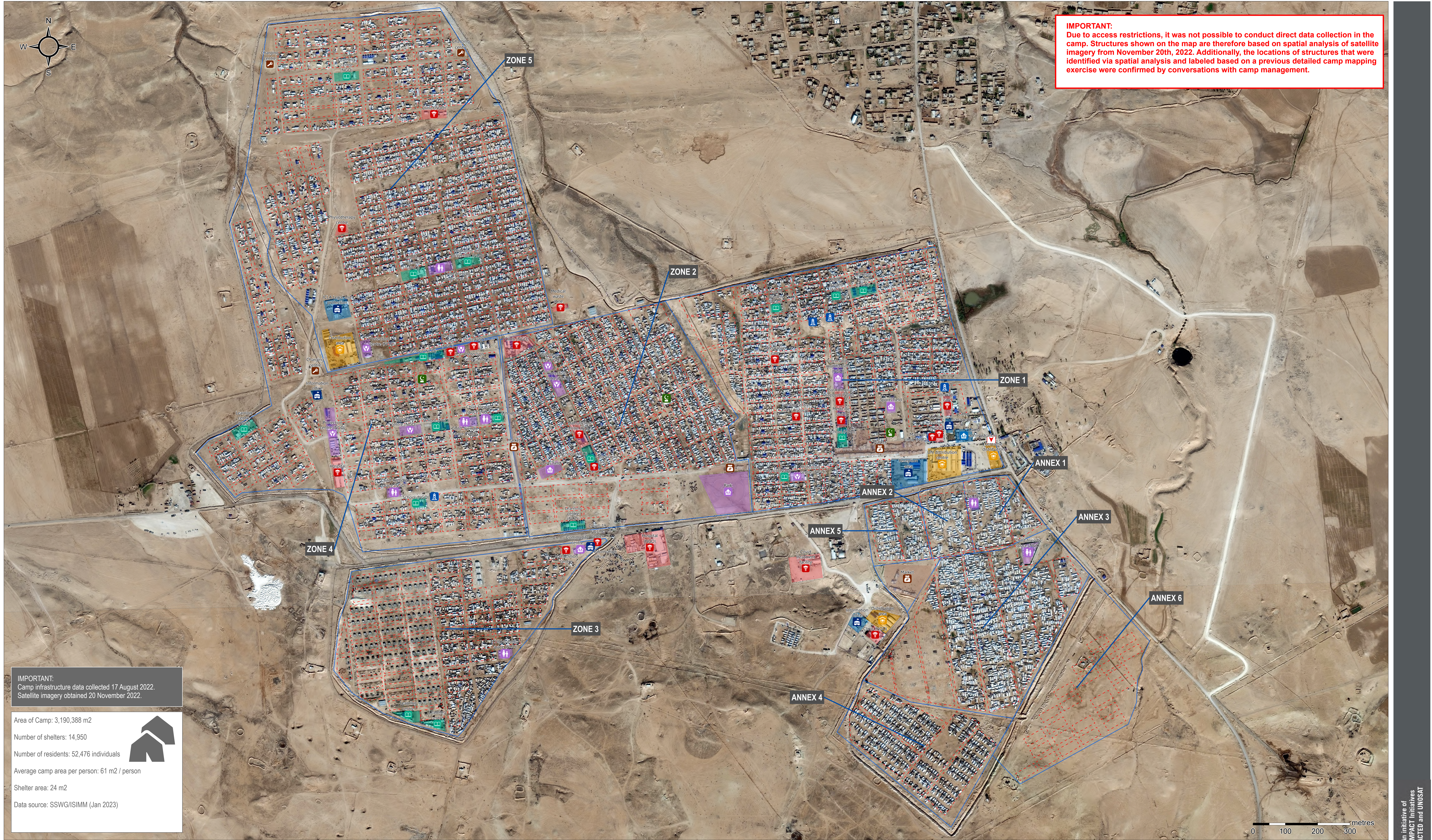


SYRIA - Al Hol Camp

Overview - As of November 2022

For Humanitarian Purposes Only
Production date: 14 February 2023



- General infrastructure**
- Entrance
 - Mosque
 - Water tower
 - Block
 - Zone
 - Camp offices
 - Health
 - Education
 - Community area
 - Distribution
 - Market
 - Services
 - Camp administration
 - Camp management / NGO office
 - Health facility
 - Education facility
 - Child-friendly space (NGO)
 - Community area
 - Protection centre (NGO)
 - Distribution
 - Market
 - Services

Contact: mena.reach@impact-initiatives.org
Projection: WGS 1984 UTM 37N
Data Sources:
Infrastructure: REACH
Satellite Imagery: WorldView 2 from 20 November 2022
Copyright: (c)2022 DigitalGlobe
Source: US Department of State, Humanitarian Information Unit, NextView License
File: REACH_SYR_Map_Al_Hol_Camp_Jan2023_A0

Note: Data, designations and boundaries contained on this map are not warranted to be error-free and do not imply acceptance by the REACH partners, associated, donors mentioned on this map.