



Borno - Shelter and Non-Food Items (NFI)

Assessment of Hard-to-Reach Areas in Northeast Nigeria

July 2019

Overview

The continuation of conflict in Northeast Nigeria has created a complex humanitarian crisis, rendering sections of Borno state as hard to reach. To address information gaps facing the humanitarian response in Northeast Nigeria and inform humanitarian actors on the demographics of households in hard-to-reach areas of Northeast Nigeria, as well as to identify their needs, access to services and movement intentions, REACH has been conducting a monthly assessment of hard-to-reach areas in Northeast Nigeria since November 2018.

Using its Area of Knowledge (AoK) methodology, REACH remotely monitors the situation in hard-to-

reach areas through monthly multi-sector interviews in accessible Local Government Area (LGA) capitals with the following typology of Key Informants (KIs):

- KIs who are newly arrived internally displaced persons (IDPs) who have left a hard-to-reach settlement in the last 3 months¹
- KIs who have had contact with someone living or having been in a hard-to-reach settlement in the last month (traders, migrants, family members, etc.)¹

Selected KIs are purposively sampled and are interviewed on settlement-wide circumstances in hard-to-reach areas, rather than their individual

experiences. Responses from KIs reporting on the same settlement are then aggregated to the settlement level. The most common response provided by the greatest number of KIs is reported for each settlement. When no most common response could be identified, the response is considered as 'no consensus'. While included in the calculations, the percentage of settlements for which no consensus was reached is not displayed in the results below.

All percentages presented in this factsheet, unless otherwise specified, represent the proportion of settlements assessed within a LGA reporting this specific response. Findings are only reported on

LGAs where at least 5% of all settlements in the respective LGA have been assessed.

The findings presented are indicative of broader trends in assessed settlements in July 2019, and are not statistically generalisable.

Assessment Coverage

2,219 Key Informants interviewed

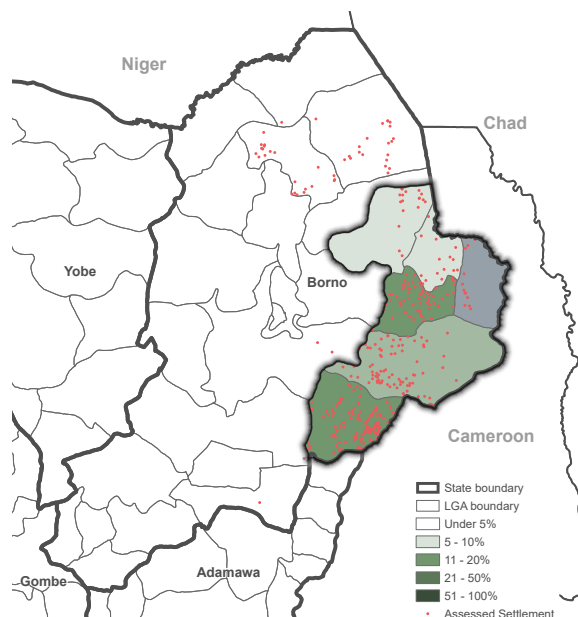
423 Settlements assessed

11 LGAs assessed

6 LGAs with 5% or more coverage²

Assessment coverage

Proportion of settlements assessed:

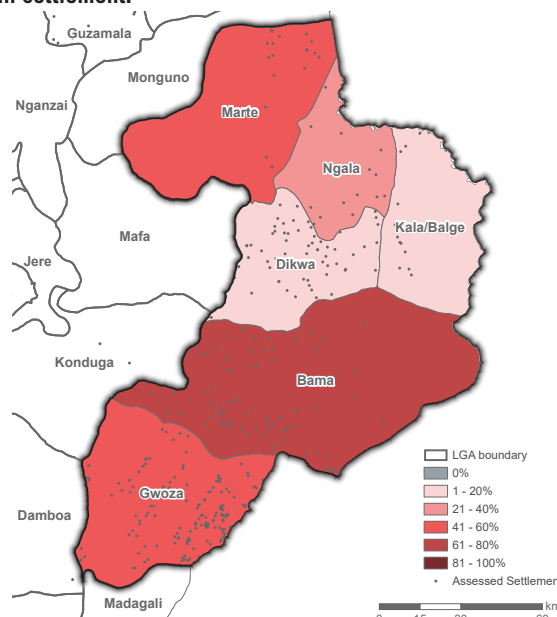


¹ Where possible, only KIs that have arrived very recently (0-3 weeks prior to data collection) were interviewed. If not stated otherwise, the recall period is set to one month prior to the last information the KI has had from the hard-to-reach area.

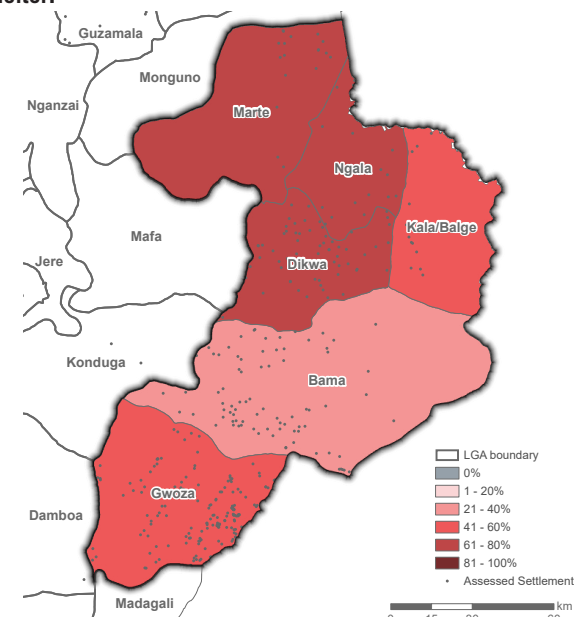
² LGA level data is only represented for LGAs in which at least 5% of settlements have been assessed. The most recent version of the VTS dataset (released in February 2019 on vts.eocon.org) has been used as the reference for settlement names and locations.

Shelter situation

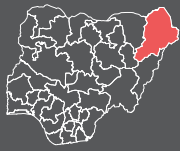
Proportion of assessed settlements reporting any members of the local community / any IDPs living in the bush, outside of the main settlement:³



Proportion of assessed settlements where IDPs are present (63%) reporting that any IDPs are living in the open without shelter:³



³ While the map on the left refers to the location of shelters with respect to the settlement, the map on the right refers to the absence of a physical shelter.



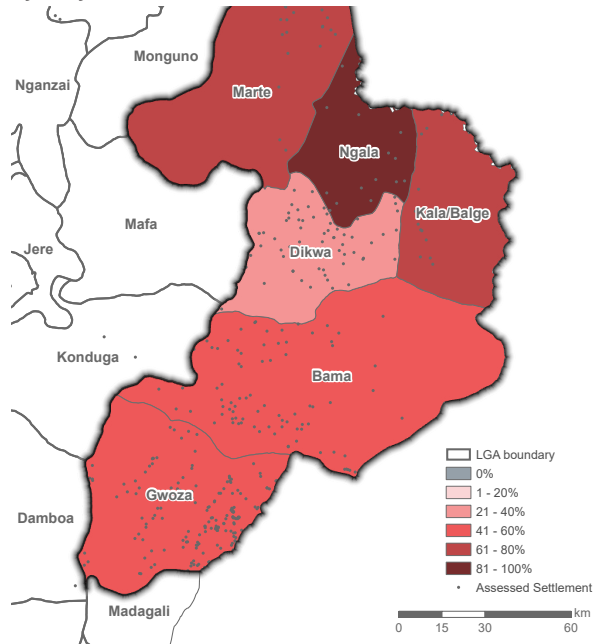
Borno - Shelter and Non-Food Items (NFI)

Assessment of Hard-to-Reach Areas in Northeast Nigeria

July 2019

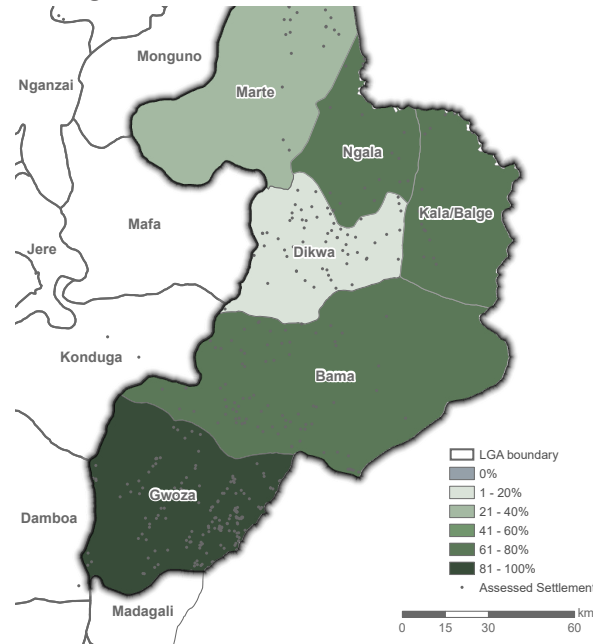
Shelter status

Proportion of assessed settlements reporting that at least one shelter was damaged or destroyed by conflict:



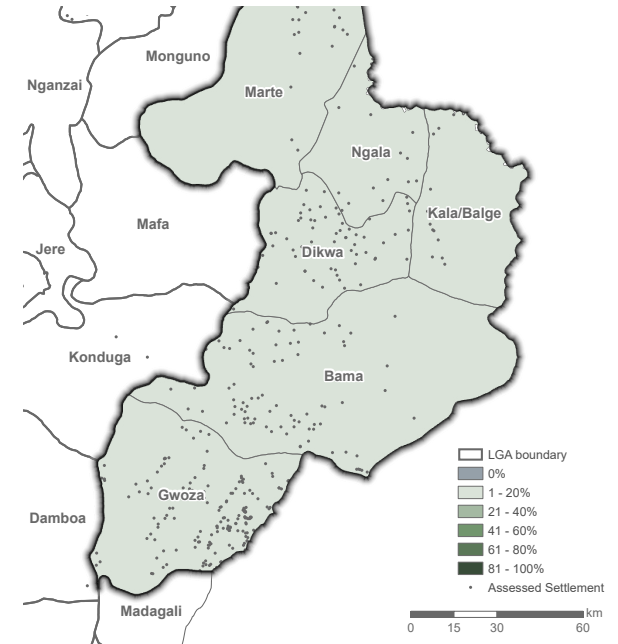
Shelter materials

Proportion of assessed settlements reporting access to shelter materials other than mud or grass:

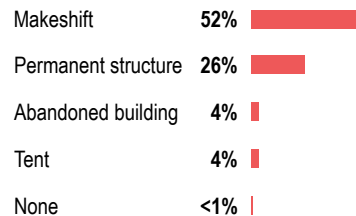


NFI assistance

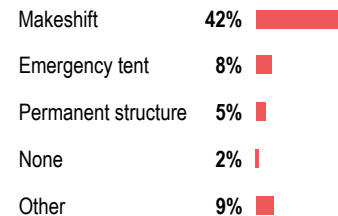
Proportion of assessed settlements reporting a NFI distribution within the last three months:



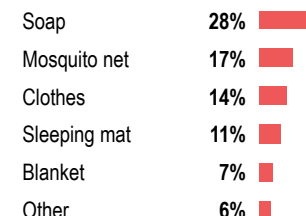
Main shelter types reported for non-displaced populations living in assessed settlements:



Main shelter types reported for IDPs in assessed settlements, where IDPs are present:



Main NFI needs in assessed settlements:



Proportion of assessed settlements in which the following NFIs as reportedly available and used (multiple answers possible):

