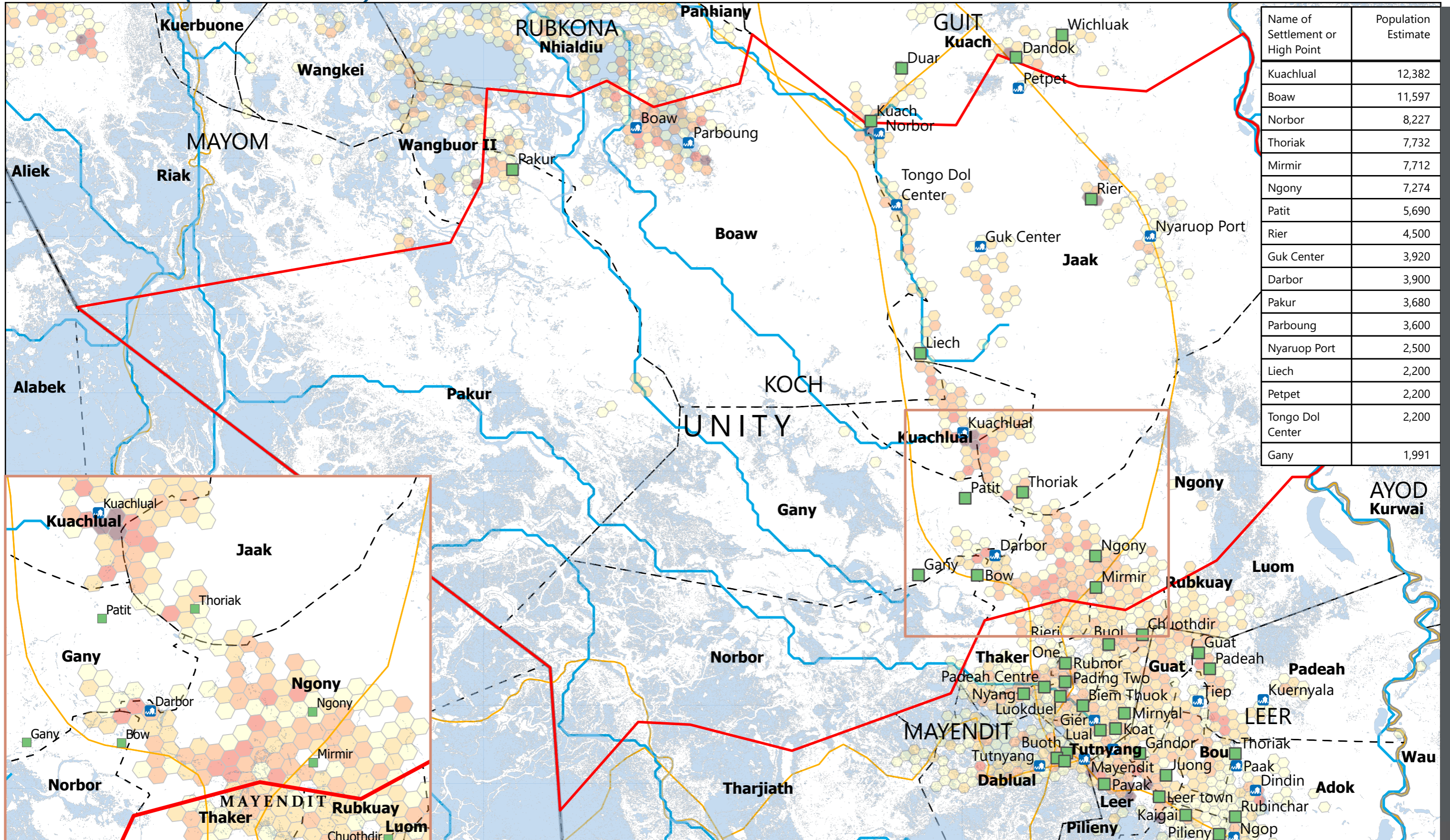


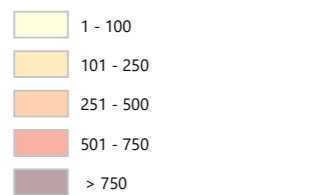
# SOUTH SUDAN - Koch County

## Flood overview (September 2025)

For Humanitarian Purposes Only  
Production Date: 29 September 2025

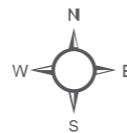


### Population (Kontur, 2023)



- Satellite-detected flood extent (FEWSNET, as of 30th August 2025)
- Flooded settlements
- Flooded Small Towns
- High Ground (OCHA 2024 & UNMISS 2025)

- Roads
- River
- Payam
- Focus County
- County
- State



Data sources: Source: REACH, OCHA, UNMISS, IOM\_DTM, UNOSAT, FEWSNET  
Coordinate System:  
Name: GCS WGS 1984  
File: REACH\_SSD\_Map\_Unity\_Koch\_Flood\_29\_Sept\_2025  
Contact: reach.mapping@impact-initiatives.org

Note: Data, designations and boundaries contained on this map are not warranted to be error-free and do not imply acceptance by REACH partners, associates or donors mentioned on this map.