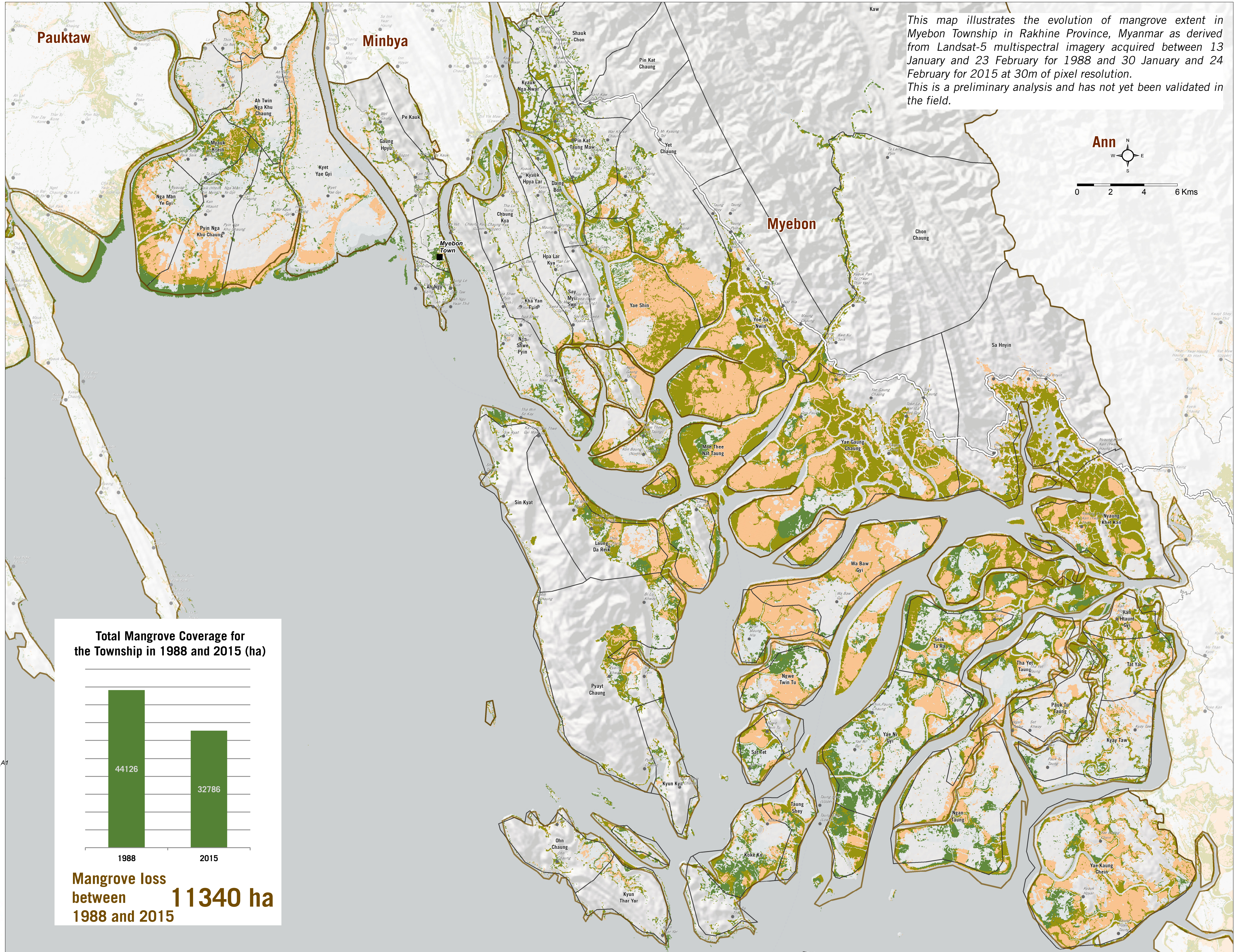
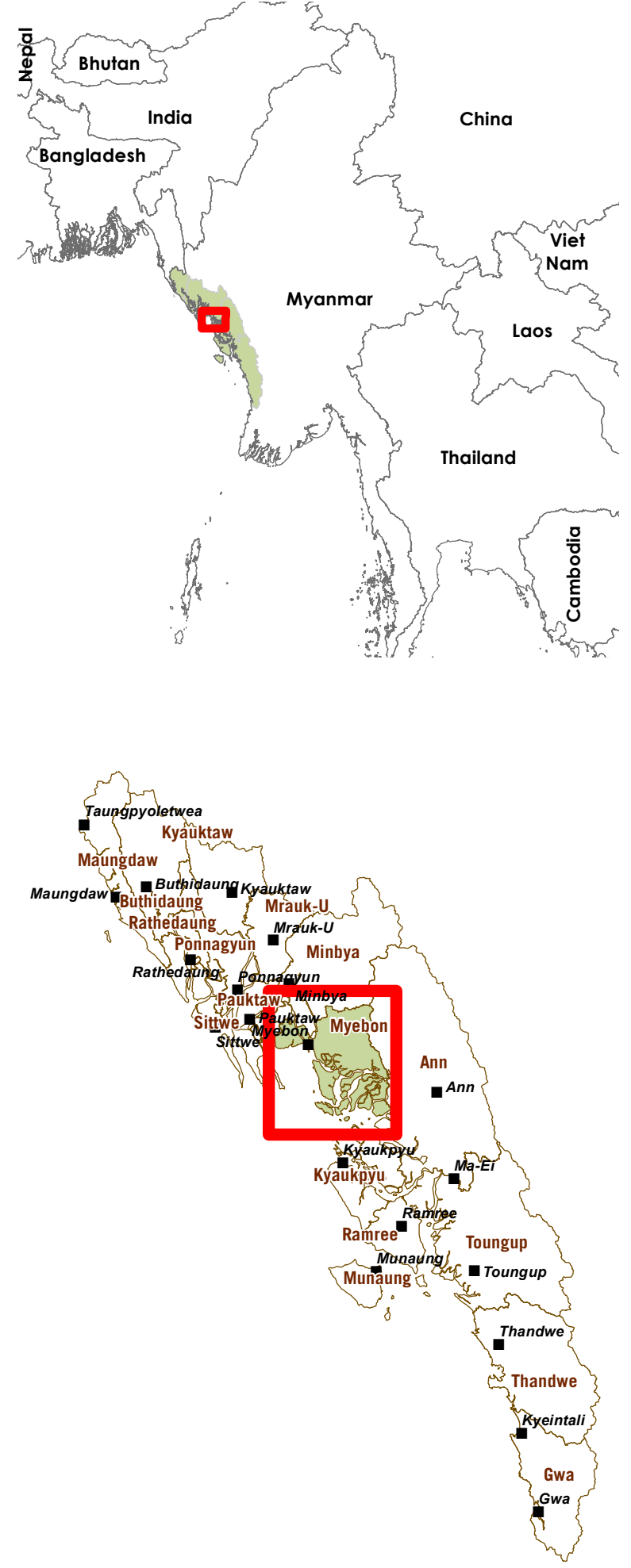




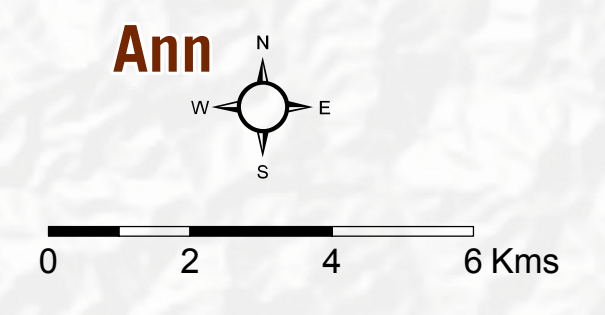
MYANMAR - Rakhine State

Mangrove Coverage Evolution in Myebon Township 1988-2015

For Humanitarian Purposes Only
Production date : 1st July 2015



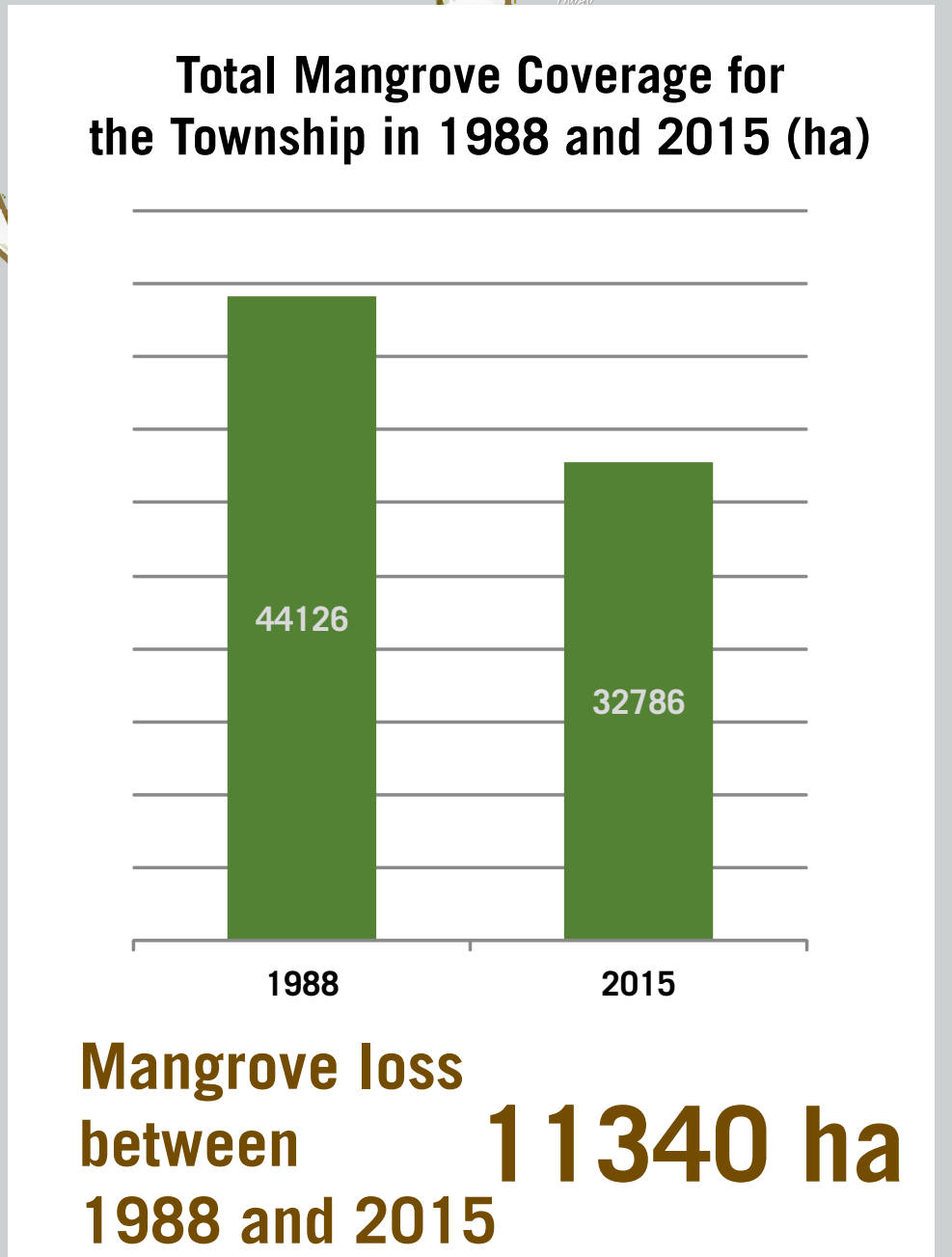
This map illustrates the evolution of mangrove extent in Myebon Township in Rakhine Province, Myanmar as derived from Landsat-5 multispectral imagery acquired between 13 January and 23 February for 1988 and 30 January and 24 February for 2015 at 30m of pixel resolution. This is a preliminary analysis and has not yet been validated in the field.



- New Mangrove area
- Remaining area 1988-2015
- Decrease between 1988 and 2015
- ▭ State Boundary
- ▭ Township Boundary
- ▭ Village-Tract
- Village

Data sources:
Landcover Analysis: UNOSAT
Administrative Boundaries, Settlements: OCHA
Roads: OSM
Coordinate System: WGS 1984 UTM Zone 46N
Contact: reach.mapping@impact-initiatives.org
File: REACH_MMR_Map_Myebon_HVA_Mangrove_01JUL2015_A1

Note: Data, designations and boundaries contained on this map are not warranted to be error-free and do not imply acceptance by the REACH partners, associated, donors mentioned on this map.



REACH
An initiative of
IMPACT Initiatives
ACTED and UNOSAT