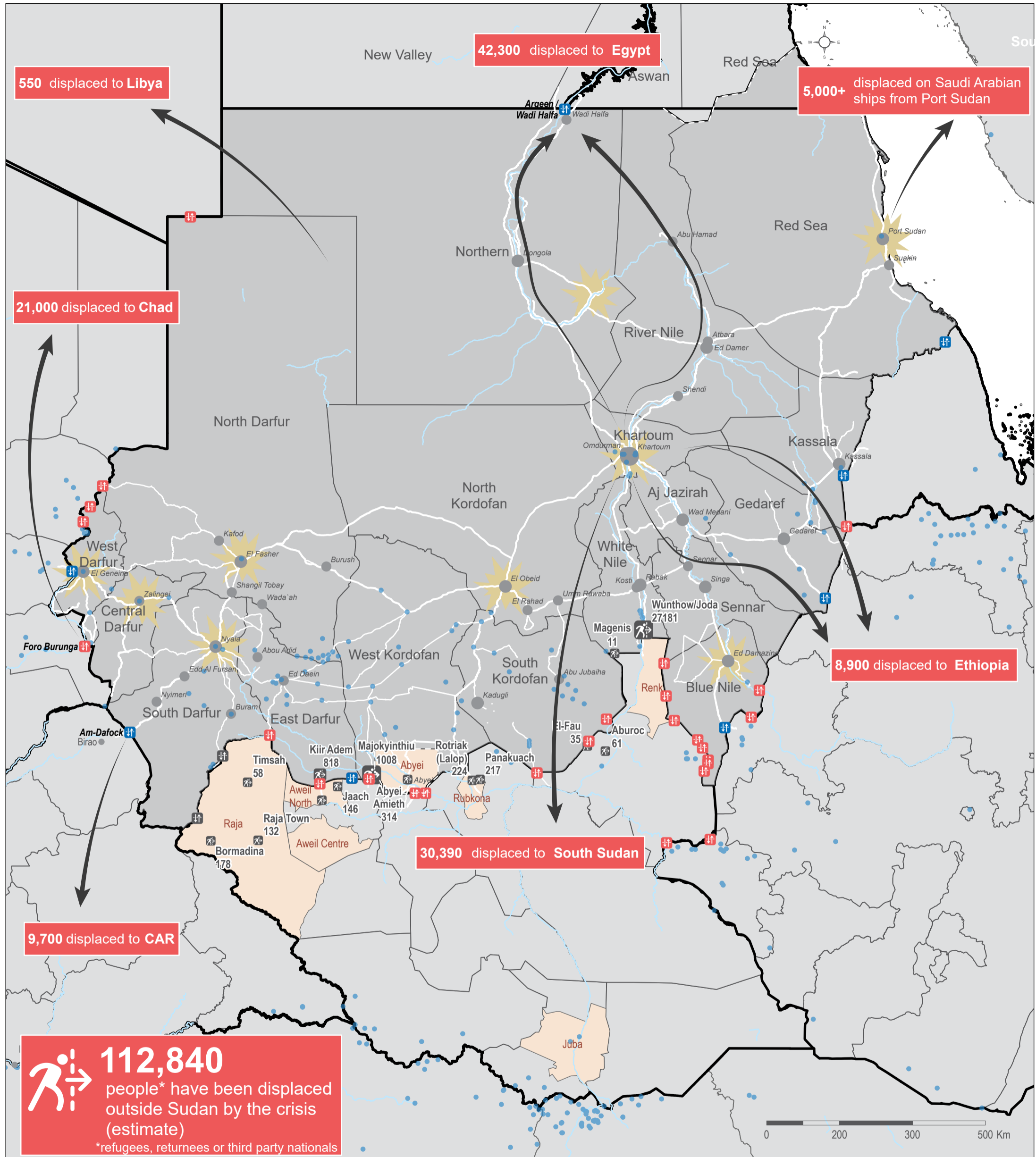


SUDAN CRISIS

Reported External Displacements - As of 2 May 2023

For Humanitarian Purposes Only
Production date : 3 May 2023



Settlements	Border crossing (WFP)	Points of entry in South Sudan	Admin 1 Boundary
National Capital	Official	# Individuals registered 2 May	Roads
Admin 1 Capital	Unofficial	< 500	Primary
Principal Town	Unknown	501 - 1,000	Secondary
Reported Conflict Areas		27,181	Rivers
Existing refugee settlement			
Crossborder main displacement reported			
		Reported main intended destinations in South Sudan	

This map was produced using secondary data sources, with figures from published reports of partner agencies. These figures are, by nature, inexact given the current state of the crisis, high levels of uncertainty and lack of access. Discrepancies are prone to occur until more reliable data comes available.

Data sources:
Displacement figures - IOM / UNHCR / OCHA
Crossborder points: WFP
Registration points: RRC, UNHCR and IOM
Reported conflict - ACLED
Refugee settlements - UNHCR 2023
Populated places, administrative boundaries, roads - UN OCHA
Rivers - FAO
Coordinate System: GCS WGS 1984
Filename: REACH_SDN_Map_Crossborder_displacement_03MAY2023_A3
Contact: reach.mapping@impact-initiatives.org

Note: Data, designations and boundaries contained on this map are not warranted to be error-free and do not imply acceptance by REACH partners, associates or donors mentioned on this map.