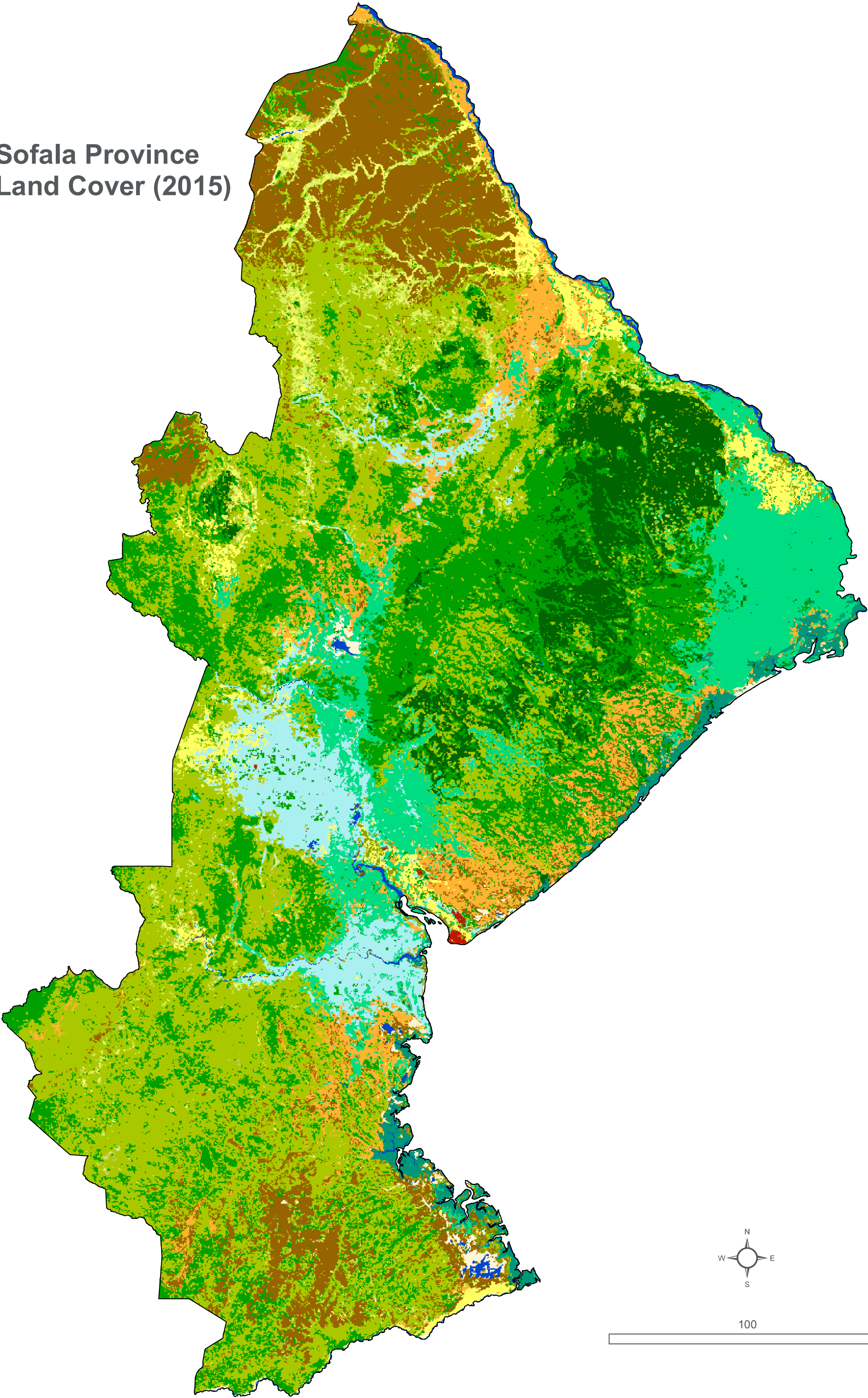


MOZAMBIQUE - Cyclone Idai - Sofala Province

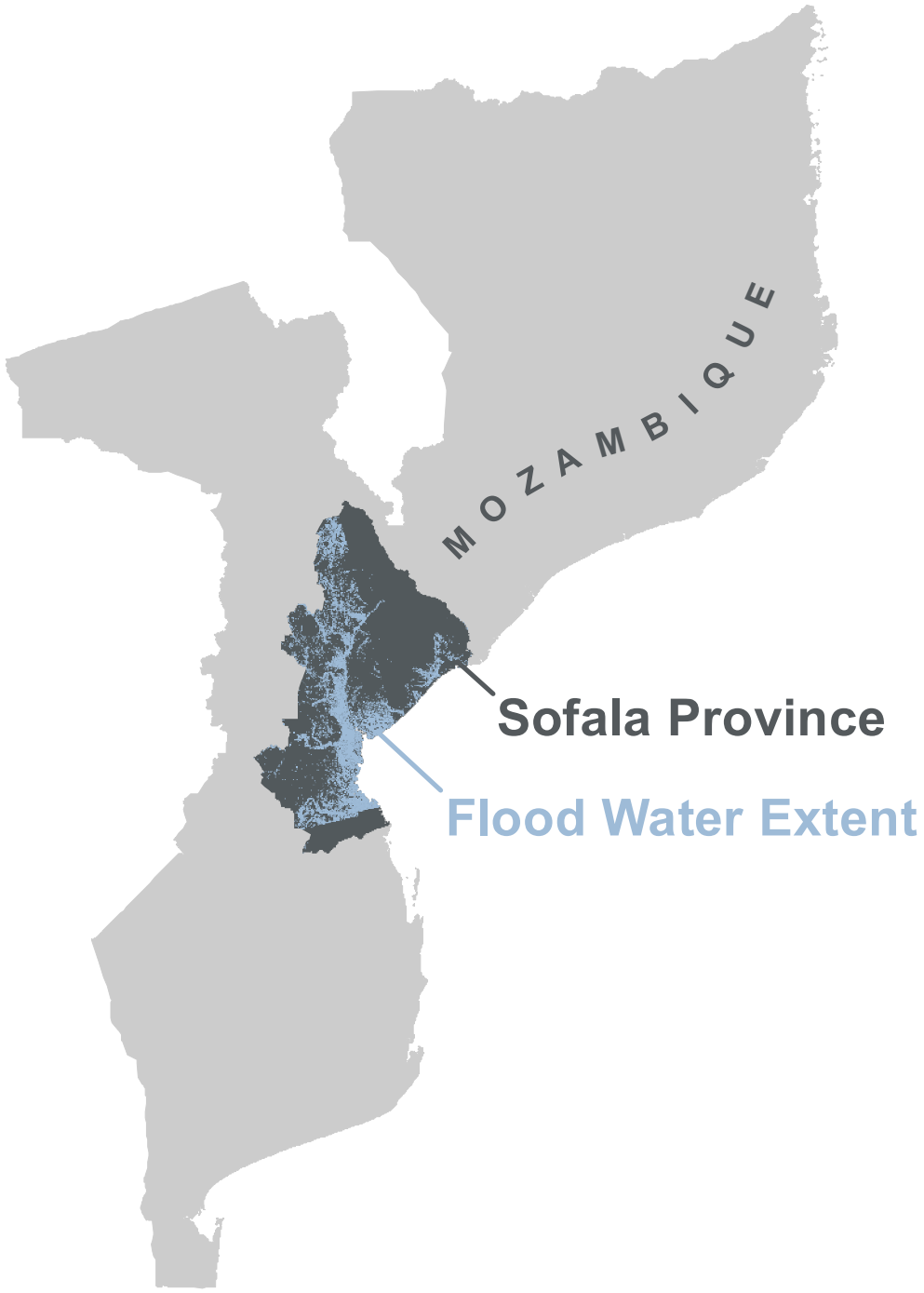
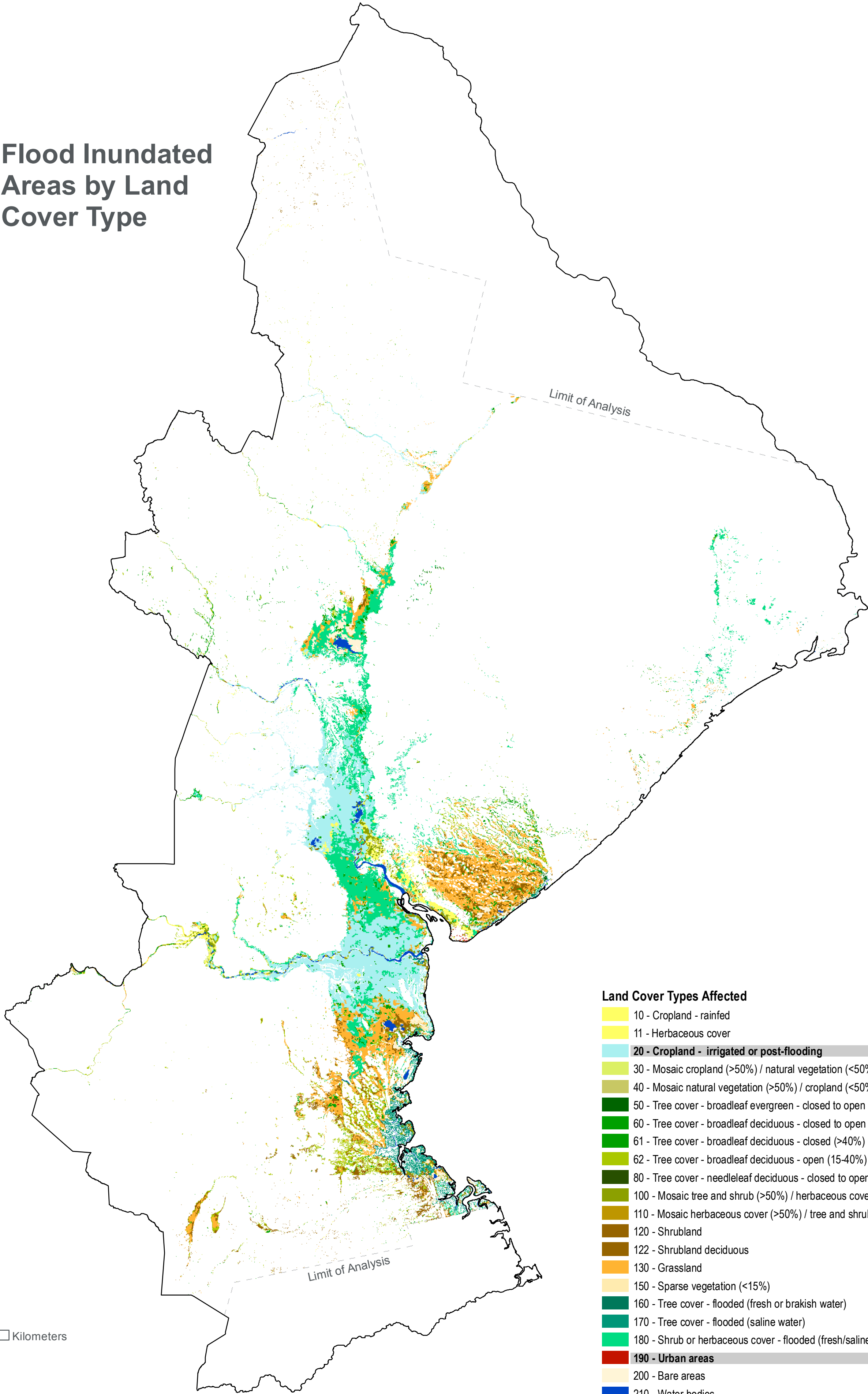
Flood Inundated Areas by Land Cover Type (19 - 20 March 2019)

For Humanitarian Purposes Only
Production date : 26 March 2019

Sofala Province
Land Cover (2015)



Flood Inundated
Areas by Land
Cover Type



Data sources:
Land cover - ESA CCI LC 2015
Flood water extent - UNOSAT 19-20 March 2019
Administrative boundaries - OCHA

Coordinate System: GCS WGS 1984
File: MOZ_Map_Sofala_LandCover_FloodInundation_26MAR2019
Contact: reach.mapping@impact-initiatives.org

Note: Data, designations and boundaries contained on this map are not warranted to be error-free and do not imply acceptance by the REACH partners, associates, or donors mentioned on this map.

Land Cover Types Affected	Total Area (ha)*	Inundated Area (ha)**	% of Total Area Inundated***
10 - Cropland - rainfed	38,297	2,297	6.0%
11 - Herbaceous cover	158,029	15,367	9.7%
20 - Cropland - irrigated or post-flooding	317,158	142,744	45.0%
30 - Mosaic cropland (>50%) / natural vegetation (<50%)	177,736	3,048	1.7%
40 - Mosaic natural vegetation (>50%) / cropland (<50%)	17,015	963	5.7%
50 - Tree cover - broadleaf evergreen - closed to open (>15%)	429,158	746	0.2%
60 - Tree cover - broadleaf deciduous - closed to open (>15%)	1,206,372	28,927	2.4%
61 - Tree cover - broadleaf deciduous - closed (>40%)	336,023	1,530	0.5%
62 - Tree cover - broadleaf deciduous - open (15-40%)	2,113,754	38,011	1.8%
80 - Tree cover - needleleaf deciduous - closed to open (>15%)	134	47	34.9%
100 - Mosaic tree and shrub (>50%) / herbaceous cover (<50%)	56,774	13,551	23.9%
110 - Mosaic herbaceous cover (>50%) / tree and shrub (<50%)	1,746	539	30.9%
120 - Shrubland	722,966	41,968	5.8%
122 - Shrubland deciduous	20,115	258	1.3%
130 - Grassland	358,282	110,574	30.9%
150 - Sparse vegetation (<15%)	2,134	1,231	57.7%
160 - Tree cover - flooded (fresh or brackish water)	117	3	2.4%
170 - Tree cover - flooded (saline water)	104,493	19,625	18.8%
180 - Shrub or herbaceous cover - flooded (fresh/saline/brackish water)	624,810	115,041	18.4%
190 - Urban areas	3,868	449	11.6%
200 - Bare areas	35,913	16,709	46.5%
210 - Water bodies	50,473	13,252	26.3%

*Total Area (ha) represents the total area in hectares of each affected land cover type in Sofala Province.
**Inundated Area (ha) represents the total area in hectares of each affected land cover type covered by flood inundation in Sofala Province.
*** % of Total Area Inundated represents the percentage of the total area of each affected land cover type covered by flood inundation in Sofala Province.