



IDP Camp Profile - Kerbala MODM

Kerbala, Iraq
December 2016

Management agency: Government
Manager/Focal point: Abdullghafour Musallam
Phone number: 7724076795
Email: n/a
Registration actor: Government

Summary

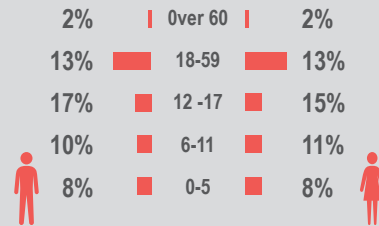
This profile provides an overview of conditions in Kerbala MODM camp. Primary data was collected through household surveys on 27-12-2016. Households were randomly sampled to a 95% confidence and 10% margin of error, based on population figures provided by CCCM. In some cases, additional information from camp managers has been used to support findings. Round VI of data collection was in September 2016

Camp Overview

of individuals: 5,660
of households: 1,320
Date opened: 1-07-2015
Occupied number: 1,187
Ongoing extension: yes
Planned capacity: 1,627
Camp area: 340,817m²

Demographics

51% male / 49% female

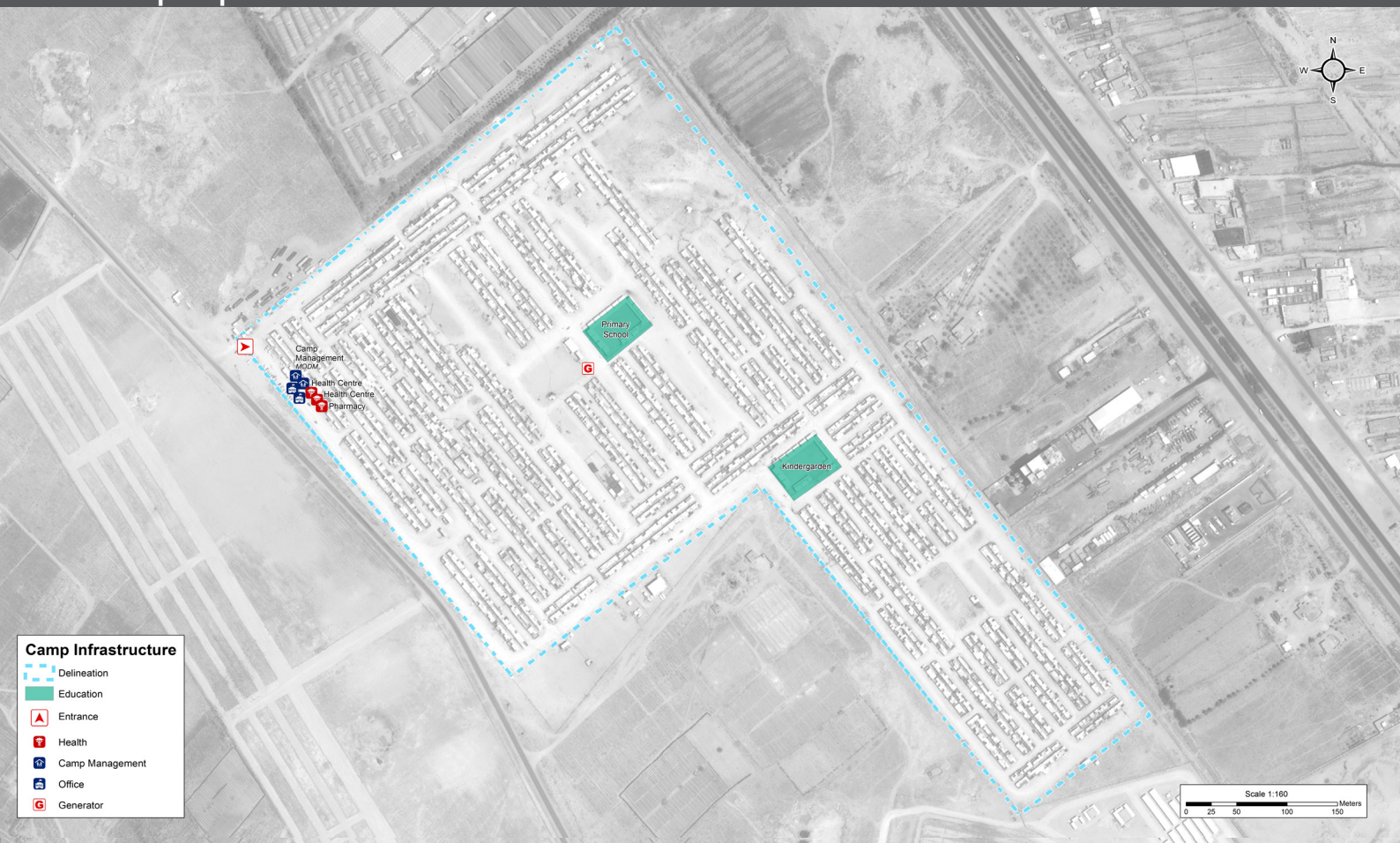


Location Map



IDP Camp Map - Kerbala MODM

Lat. 32° 32' 11.0004" N Long. 44° 6' 6.0012" E



Sectoral Minimum Standards

		Target	Previous Round	Current Round	Achievement
Education	% of children aged 6-11 attending formal school	100%	59%	76%	●
	% of children aged 12-17 attending formal school	100%	26%	76%	●
Food	% of households accessed Family Food Parcel or equivalent in the past month	100%	87%	99%	●
Health	Health services are available on-site or within walking distance	Yes	Yes	Yes	●
CCCM	Average open area per household	min. 30m ²	n/a	n/a	
Protection	% of IDPs registered on an individual basis (MODM/DDM)	100%	98%	41%	●
Shelter	Average covered area per person	min. 3.5m ²	n/a	n/a	
	Average number of individuals per shelter	max. 5	5	5	●
WASH	# of persons per latrine	max. 20	5	5	●
	# of persons per shower	max. 20	5	5	●
	Frequency of solid waste disposal at least weekly	Min. weekly	Yes	Yes	●

Targets based on minimum standards agreed with the CCCM Cluster, Iraq. Findings based on household-level data, enumerator field observations, and camp management documentation
● Minimum standard reached, ● More than 50% minimum standard reached, ● Less than 50% of minimum standard reached or not at all





IDP Camp Profile - Kerbala MODM

Kerbala, Iraq
December 2016

Management agency: Government
Manager/Focal point: Abdullghafour Musallam
Phone number: 7724076795
Email: n/a
Registration actor: Government

Shelter

Top observed shelter type

Caravan 100%

Top reported needed shelter items

Tarpaulin 97%

Sun shading net 91%

Timber 82%

Top reported needed basic items

Blanket 92%

Cooker 70%

Mattresses 64%

Top reported needed winter item

Kerosene heater 56%

Top reported needed summer item

Rechargeable fan 64%

Food Security

Reported access to food assistance

99% accessed food assistance in past month

92% received Public Distribution System (PDS) in past month

Top three food consumption coping strategies

Cheaper 8%

Sent HH members to beg 6%

n/a n/a

WASH

Latrines and showers

0% reported public or communal latrines

0% public/communal latrines lockable from the inside

0% public/communal latrines with functioning lighting

Top three reported methods of waste removal

Collected 100%

n/a n/a

n/a n/a

Reported drinking water sources

0% connection inside the home to collective water storage

2% connection inside the home to private water storage

0% communal water tap outside the shelter

Access to water

60% reported 24 consecutive hours without access to water in the past month

Community Organisation

IDP committees

100% reported awareness of IDP committee(s)

Complaints mechanism

43% made a complaint about conditions or assistance

Protection

Family Separation

0% reported hosting unaccompanied or separated minors

0% reported that other family members intended to join them

Vulnerable groups

Pregnant / lactating women 4%

Chronically ill individual(s) 3%

Disabled individual(s) 0%

Female headed households 4%

Intentions

0% planned to move to a different location in next 3 months

Restrictions

99% reported being able to leave the camp temporarily (e.g. to go to the market, for livelihood opportunities)

Livelihoods

52% reported as being economically inactive

Top three income sources*:

No livelihood 52%

Public sector 9%

Low-skilled services 9%

*Households were asked to select all income sources within household.

Top three reported livelihood coping strategies

Spent savings 54%

Support from family 6%

Selling assets 6%