



Nyal Port Monitoring

Panyijiar County, Unity State, South Sudan

South Sudan Displacement Crisis

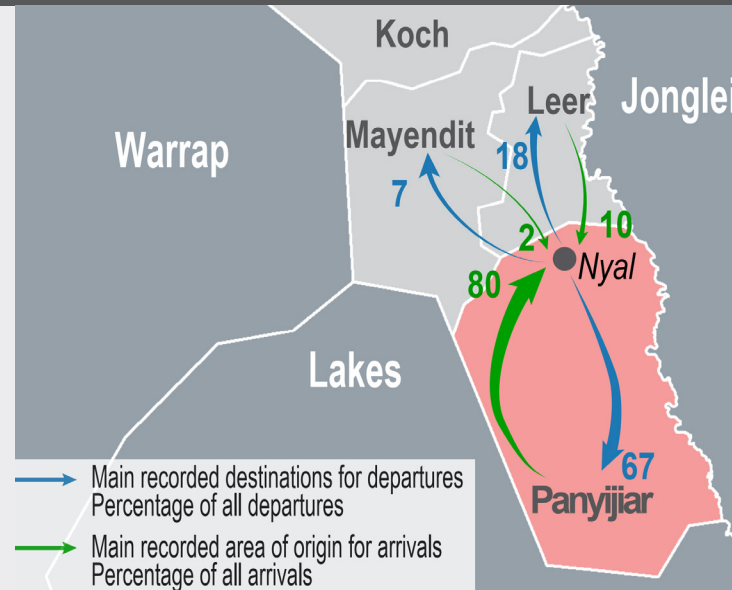
July 2021

CONTEXT AND METHODOLOGY

Nyal town is located in Northern Panyijiar County, Unity State, along the banks of the Sudd, the third largest swamp in the world. Since the beginning of the crisis, internally displaced persons (IDPs) from Unity and Jonglei States have perceived Nyal as a safe location with ample resources. Recently, Nyal has also become a key location for people travelling to and from nearby islands.

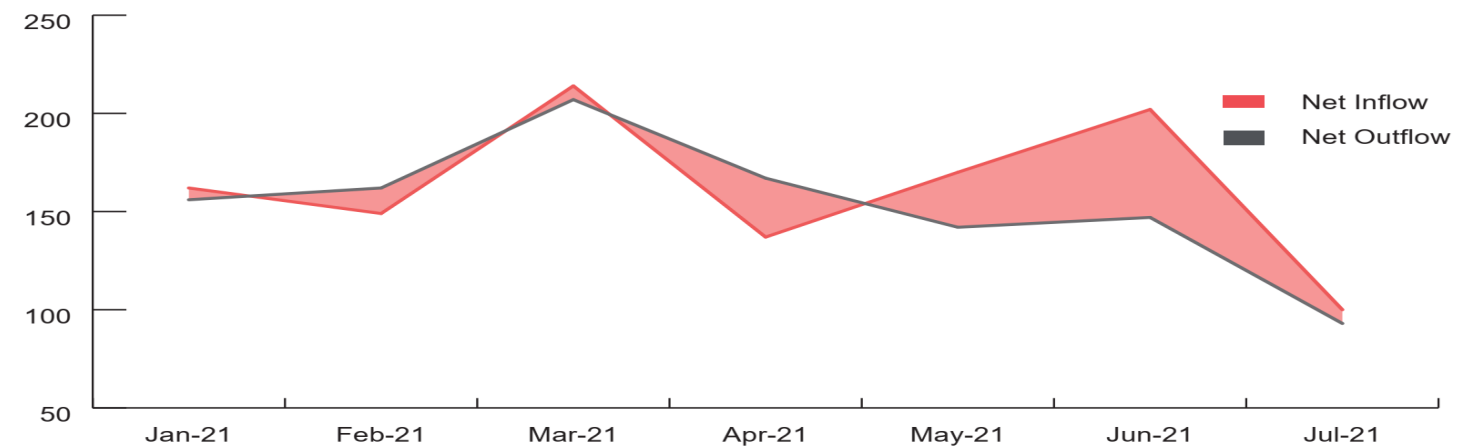
Since 1 November 2016, REACH has monitored three ports in Nyal – Gap Port, Nyal Port and Katieth Port – to record the arrivals and departures on a daily basis. The information gathered covers household (HH) demographics, key push and pull factors, vulnerable populations, and transportation routes. The daily data was synthesised to provide evidence for more effective humanitarian planning.

The REACH team collected data from 7:30 a.m. – 5:30 p.m. Monday through Friday to ensure wide coverage of Nyal's three ports. REACH teams attempt to interview all arrivals and departures at the HH level using a contextualised survey. However, the data presented here is not representative, rather indicative, of movement trends for the assessed population.¹ This factsheet is based on data on 93 departing HHs (384 individuals), 100 arriving HHs (320 individuals), and 2 transiting HHs 10 people transiting (10 individuals), which was collected over 22 days from 1 to 31 July 2021.



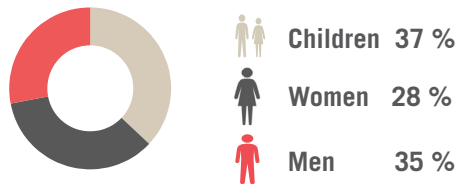
GENERAL MOVEMENT TRENDS¹

Average daily number of individuals departing (red) and arriving (grey); January 2021 to July 2021.



DEPARTURES FROM NYAL

Demographic



85% of departing households were partial households.²

Vulnerabilities

31% of departing households reported that at least one member of the household was **breastfeeding**.

19% of departing households reported that at least one member of the household was **pregnant**.

10% of departing households reported that at least one member of the household was **critically ill**.

Push factors

Most commonly reported reasons for leaving Nyal.³

Distance from family/home	67 %
Lack of jobs	11 %
Lack of health care services	11 %

Pull factors

Most commonly reported reasons for travelling to desired location from Nyal.³

Proximity to family/home	70 %
Presence of work opportunity	11 %
Presence of healthcare services	10 %

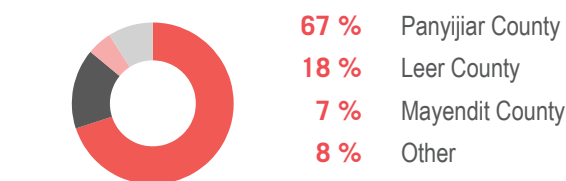
Reasons for leaving Nyal

Primary reported push factors for leaving Nyal, April to July 2021:

	Apr 21	May 21	Jun 21	Jul 21
Distance from family/home	67%	62%	56%	67%
Lack of jobs	9%	12%	7%	11%
Lack of health services	9%	12%	5%	11%

Destination county location

Reported county or state to which departing households were going:



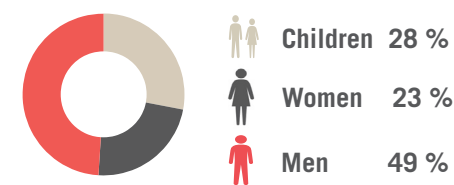
Intended duration of stay in destination

Reported length of time that respondents intended to stay in destination:

Less than a month	9 %
From 1 to 3 months	24 %
From 4 to 6 months	20 %
More than 6 months or permanently	46 %
Do not know or choose not to answer	1 %

ARRIVALS TO NYAL

Demographic



95% of arriving households were partial households.²

Vulnerabilities

13% of arriving households reported that at least one member of the household was **breastfeeding**.

11% of arriving households reported that at least one member of the household was **pregnant**.

8% of arriving households reported that at least one member of the household was **critically ill**.

Pull factors

Most commonly reported reasons for choosing to come to Nyal after being displaced³

Presence of markets/goods	42 %
Proximity to family/home	34 %
Presence of health services	12 %

Push factors

Most commonly reported reasons for leaving previous location³:

Lack of markets/goods	39 %
Proximity to family/home	23 %
Lack of health services	12 %

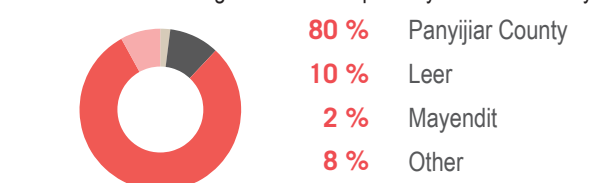
Reasons for coming to Nyal

Primary reported pull factors for coming to Nyal, April to July 2021:

	Apr 21	May 21	Jun 21	July 21
Presence of markets/goods	51%	50%	49%	42%
Proximity to family/home	17%	25%	21%	34%
Presence of health services	13%	11%	7%	12%

Previous county location *

80 % of the arriving households reportedly came from Panyijiar County:



Intended duration of stay in Nyal

Reported length of time that respondents intended to stay in Nyal:

Less than 1 month	57 %
From 1 to 3 months	9 %
From 4 to 6 months	10 %
More than 6 months or permanently	21 %
Do not know or do not want to answer.	3 %

Notes:

1. Indicative trends; REACH does not record all arrivals and departures.

2. Partial households are those where not all members of the self-identified family unit were reportedly travelling.

3. Reported presence of services or opportunities is indicative of respondents' perception and does not necessarily reflect availability.

* Percentages rounded to the nearest integer; responses may not add up to 100%