



IDP Camp Profile - Ankawa 2

Erbil, Iraq
January 2018

Management agency: Siryaneel Catholic Church
Manager/Focal point: AmaNoel adel kloo
Registration actor: Camp Management

Summary

This profile provides an overview of conditions in Ankawa 2 camp. Primary data was collected through household surveys on 13/12/2017. Households were randomly sampled to a 95% confidence level and a 10% margin of error, based on population figures provided by CCCM. In some cases, additional information from camp managers has been used to support findings.

Camp Overview

of individuals: 1050
of households: 350
Date opened: 4/10/2015
Occupied shelters: 350
Planned shelters: 1160
Ongoing extension: no
Camp area: 189,556m²

Demographics

48% male / 52% female

4% Over 60 3%
28% 18-59 28%
6% 12-17 7%
6% 6-11 6%
4% 0-5 7%

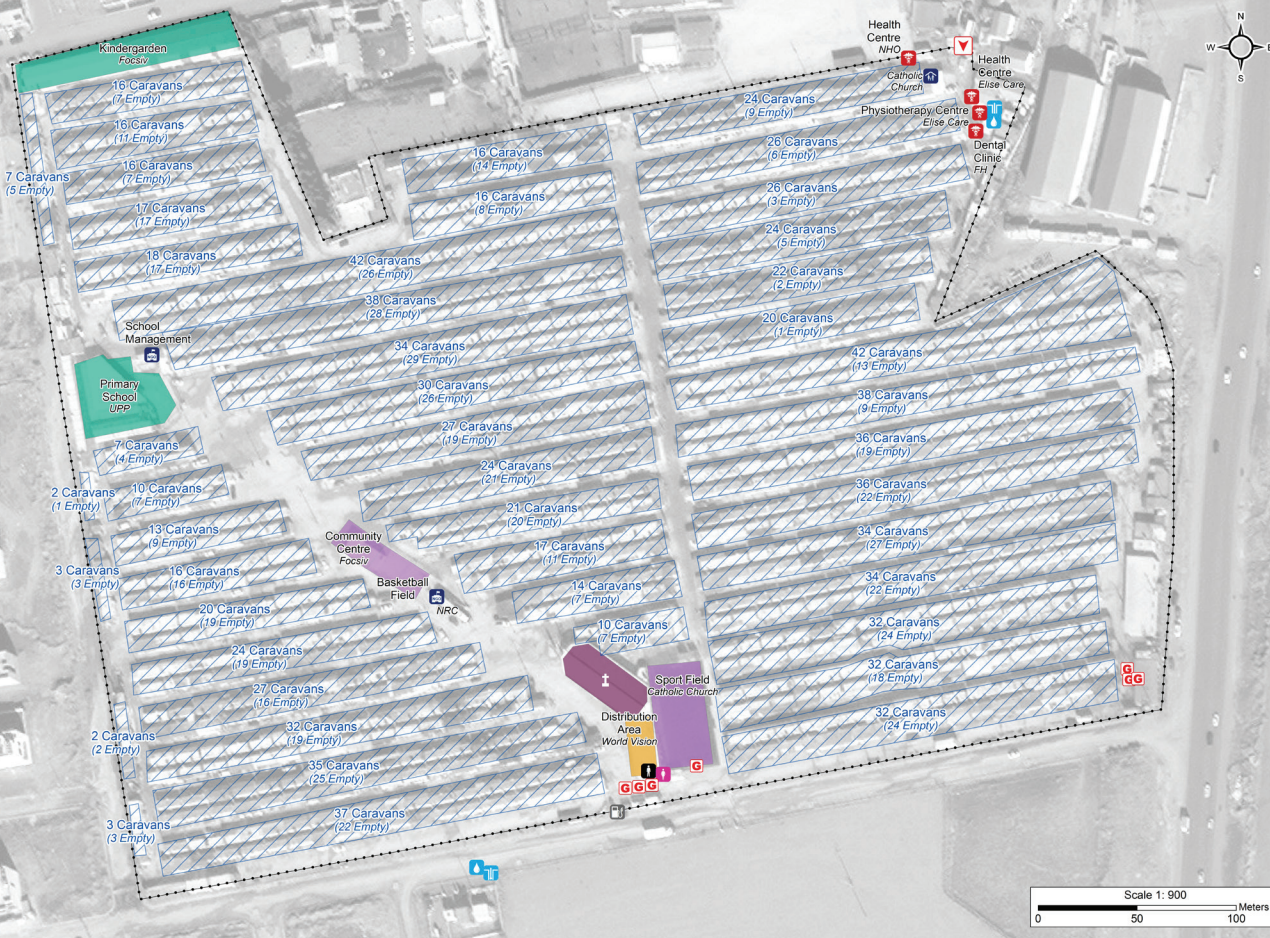
Location Map



IDP Camp Map - Ankawa 2

Lat. 36° 14' 4.035" N Long. 44° 0' 39.412" E

Satellite Imagery: WorldView-2 from 19/1/2017
Copyright: DigitalGlobe, Inc
Source: US Department of State, Humanitarian Information Unit, NextView License



Sectoral Minimum Standards

| | | Target | Previous Round | Current Round | Achievement |
|------------|--|------------------------|--------------------|--------------------|-------------|
| CCCM | Average open area per household | Min. 30m ² | 129 m ² | 431 m ² | ● |
| Protection | % of IDPs registered on an individual basis (MODM/DDM) | 100% | 98% | 98% | ● |
| WASH | # of persons per latrine | Max. 20 | 5 | 1 | ● |
| | # of persons per shower | Max. 20 | 5 | 1 | ● |
| | Frequency of solid waste disposal | Min. weekly | Every day | Every day | ● |
| Shelter | Average area covered per person | Min. 3.5m ² | 6.8 m ² | 9 m ² | ● |
| | Average number of individuals per shelter | Max. 5 | 5 | 3 | ● |
| Food | % households accessed Family Food Parcel or equivalent in previous month | 100% | n/a* | 3% | ● |
| Health | Health services available on-site or within walking distance | Yes | yes | yes | ● |
| Education | % of children aged 6-11 attending formal school | 100% | 47% | 93% | ● |
| | % of children aged 12-17 attending formal school | 100% | 79% | 66% | ● |

*Method of calculation for food distribution has changed from previous rounds

Targets based on minimum standards agreed with the CCCM Cluster, Iraq. Findings based on household-level data, enumerator field observations, and camp management documentation
● Minimum standard reached, ● 50-99% of minimum standard reached, ● Less than 50% of minimum standard reached or not at all





IDP Camp Profile - Ankawa 2

Erbil, Iraq
January 2018



Protection

Vulnerable groups

| | | |
|-------------------------------|-----|--|
| Pregnant / lactating women | 4% | |
| Chronically ill individual(s) | 16% | |
| Disabled individual(s) | 6% | |
| Female headed households | 14% | |

Intentions

| | |
|-----|--|
| 6% | planned to move to a different location in next 3 months |
| 31% | reported needing financial support to return and restart in order to return safely to their area of origin |

Restrictions

| | |
|------|--|
| 100% | reported being able to leave the camp temporarily (e.g. to go to the market, for livelihood opportunities) |
|------|--|

Documentation

| | |
|-------|---|
| 5% | reported that one or more member is missing one or more documents |
| n/a** | reported that at least one of the members missing documents is an adult (18+) |

Top three missing documents reported by those households*

n/a**
n/a**
n/a**

Top two reasons for not attending education*

(of households with school-aged children not attending school)

| | |
|-----------------------------------|-----|
| Child is disinterested | 27% |
| Child works outside the household | 18% |



Access to information

Top three information sources regarding area of origin*

| | | |
|-------------------------|-----|--|
| From others who visited | 53% | |
| Personally visited | 47% | |
| | n/a | |

Top three information needs*

| | | |
|--------------------|-----|--|
| Security situation | 79% | |
| Basic services | 64% | |
| Livelihood sources | 63% | |



Livelihoods

1% reported not having an income source

Top three income sources*

| | | |
|---------------------|-----|--|
| Humanitarian aid | 35% | |
| Unskilled labour | 29% | |
| Low skilled service | 21% | |

Top three reported livelihood coping strategies*

| | | |
|----------------------|-----|--|
| None | 36% | |
| Charitable donations | 29% | |
| Support from friends | 23% | |



Priority Needs

Top 3 reported priority needs*

| | | |
|--------------|-----|--|
| Food | 81% | |
| Employment | 65% | |
| Medical care | 54% | |



WASH

Latrines

| | |
|-----|---|
| 0% | reported access to public or communal latrines. Of those: |
| n/a | reported latrines were lockable from the inside |
| n/a | reported latrines had functioning lighting |
| n/a | reported latrines were gender segregated |

Top two most reported methods of waste removal

| | | |
|-----------|------|--|
| Collected | 100% | |
| n/a | n/a | |

Primary drinking water sources

| | |
|-----|-----------------------------|
| 76% | indoor water source |
| 18% | bottled water from the shop |

Access to drinking water

| | |
|----|---|
| 0% | reported at least 24 consecutive hours without access to water in the month prior to the assessment |
|----|---|



Shelter

23% reported flooding in their shelter in the previous year

Top observed shelter type

| | | |
|---------|------|-------------------------------|
| Caravan | 100% | |
| | n/a | of tents have secondary cover |

Top reported needed basic items*

| | | |
|--------------|-----|--|
| Heating fuel | 55% | |
| Fuel storage | 55% | |
| Jerry can | 33% | |

Top reported needed winter item*

| | | |
|----------|------|--|
| Kerosene | 100% | |
|----------|------|--|

Electricity access

| | |
|--|----|
| Average number of hours of electricity per day | 23 |
|--|----|



Food Security

Reported access to food assistance

| | |
|-----|---|
| 3% | reported having received Public Distribution System (PDS) assistance in the month prior to the assessment |
| 99% | reported access to a market within walking distance |

Top two food consumption coping strategies*

| | | |
|-------------------------|-----|--|
| Buy less expensive food | 60% | |
| Limit portions | 29% | |

*Respondents could select multiple responses
**Insufficient sample size; fewer than five respondents





IDP Camp Profile - Baharka

Erbil, Iraq
January 2018

Management agency: BCF
Manager/Focal point: Mevan Sadeeq Akreyi
Registration actor: BCF

Summary

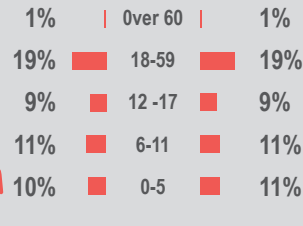
This profile provides an overview of conditions in Baharka camp. Primary data was collected through household surveys on 17/12/2017. Households were randomly sampled to a 95% confidence level and a 10% margin of error, based on population figures provided by CCCM. In some cases, additional information from camp managers has been used to support findings.

Camp Overview

of individuals: 3200
of households: 642
Date opened: 6/18/2014
Occupied shelters: 643
Planned shelters: 1293
Ongoing extension: no
Camp area: 307,087m²

Demographics

50% male / 50% female



Location Map



IDP Camp Map - Baharka

Lat. 36° 17' 40.022" N Long. 43° 59' 39.655" E



Sectoral Minimum Standards

| | | Target | Previous Round | Current Round | Achievement |
|------------|--|------------------------|--------------------|--------------------|-------------|
| CCCM | Average open area per household | Min. 30m ² | 182 m ² | 360 m ² | ● |
| Protection | % of IDPs registered on an individual basis (MODM/DDM) | 100% | 100% | 97% | ● |
| WASH | # of persons per latrine | Max. 20 | 1 | 2 | ● |
| | # of persons per shower | Max. 20 | 1 | 2 | ● |
| | Frequency of solid waste disposal | Min. weekly | Every day | Every day | ● |
| Shelter | Average area covered per person | Min. 3.5m ² | 5.4 m ² | 5.4 m ² | ● |
| | Average number of individuals per shelter | Max. 5 | 6 | 4 | ● |
| Food | % households accessed Family Food Parcel or equivalent in previous month | 100% | n/a* | 2% | ● |
| Health | Health services available on-site or within walking distance | Yes | yes | yes | ● |
| Education | % of children aged 6-11 attending formal school | 100% | 63% | 77% | ● |
| | % of children aged 12-17 attending formal school | 100% | 84% | 63% | ● |

*Method of calculation for food distribution has changed from previous rounds

Targets based on minimum standards agreed with the CCCM Cluster, Iraq. Findings based on household-level data, enumerator field observations, and camp management documentation
● Minimum standard reached, ● 50-99% of minimum standard reached, ● Less than 50% of minimum standard reached or not at all





IDP Camp Profile - Baharka

Erbil, Iraq
January 2018



Protection

Vulnerable groups

| | | |
|-------------------------------|----|--|
| Pregnant / lactating women | 3% | |
| Chronically ill individual(s) | 6% | |
| Disabled individual(s) | 1% | |
| Female headed households | 7% | |

Intentions

| | |
|-----|--|
| 4% | planned to move to a different location in next 3 months |
| 39% | reported needing financial support to return and restart in order to return safely to their area of origin |

Restrictions

| | |
|------|--|
| 100% | reported being able to leave the camp temporarily (e.g. to go to the market, for livelihood opportunities) |
|------|--|

Documentation

| | |
|-----|---|
| 7% | reported that one or more member is missing one or more documents |
| 50% | reported that at least one of the members missing documents is an adult (18+) |

Top three missing documents reported by those households*

| | |
|-------------------------|-----|
| ID card | 83% |
| Birth certificate | 33% |
| Citizenship certificate | 17% |

Top two reasons for not attending education*

(of households with school-aged children not attending school)

| | |
|------------------------|-----|
| Child is disinterested | 42% |
| Newly arrived | 26% |



Access to information

Top three information sources regarding area of origin*

| | |
|-----------------------------|-----|
| From others who visited | 76% |
| Media | 13% |
| Others who have not visited | 7% |

Top three information needs*

| | |
|-----------------------------|-----|
| Security situation | 84% |
| Livelihood sources | 74% |
| Personal property condition | 54% |



Livelihoods

3% reported not having an income source

Top three income sources*

| | |
|------------------|-----|
| Humanitarian aid | 62% |
| Unskilled labour | 33% |
| Government aid | 25% |

Top three reported livelihood coping strategies*

| | |
|----------------------|-----|
| Charitable donations | 35% |
| None | 28% |
| Spent savings | 23% |



Priority Needs

Top 3 reported priority needs*

| | |
|-----------------|-----|
| Food | 75% |
| Employment | 72% |
| Shelter support | 34% |



WASH

Latrines

| | |
|-----|---|
| 0% | reported access to public or communal latrines. Of those: |
| n/a | reported latrines were lockable from the inside |
| n/a | reported latrines had functioning lighting |
| n/a | reported latrines were gender segregated |

Top two most reported methods of waste removal

| | |
|--------------|------|
| Communal bin | 100% |
| n/a | n/a |

Primary drinking water sources

| | |
|------|---------------------|
| 100% | indoor water source |
| n/a | |

Access to drinking water

| | |
|----|---|
| 0% | reported at least 24 consecutive hours without access to water in the month prior to the assessment |
|----|---|



Shelter

17% reported flooding in their shelter in the previous year

Top observed shelter type

| | |
|------|-------------------------------|
| Tent | 51% |
| 100% | of tents have secondary cover |

Top reported needed basic items*

| | |
|--------------|-----|
| Fuel storage | 13% |
| Heating fuel | 10% |
| Heating fuel | 10% |

Top reported needed winter item*

| | |
|----------|-----|
| Kerosene | 91% |
|----------|-----|

Electricity access

| | |
|--|----|
| Average number of hours of electricity per day | 11 |
|--|----|



Food Security

Reported access to food assistance

| | |
|-----|---|
| 2% | reported having received Public Distribution System (PDS) assistance in the month prior to the assessment |
| 97% | reported access to a market within walking distance |

Top two food consumption coping strategies*

| | |
|-------------------------|-----|
| Buy less expensive food | 64% |
| Limit portions | 27% |

*Respondents could select multiple responses

**Insufficient sample size; fewer than five respondents





IDP Camp Profile - Debaga 1

Erbil, Iraq
January 2018

Management agency: BCF
Manager/Focal point: Badradin Najmadin
Registration actor: BCF

Summary

This profile provides an overview of conditions in Debaga 1 camp. Primary data was collected through household surveys on 18/12/2017. Households were randomly sampled to a 95% confidence level and a 10% margin of error, based on population figures provided by CCCM. In some cases, additional information from camp managers has been used to support findings.

Camp Overview

of individuals: 8896
of households: 1670
Date opened: 10/10/2015
Occupied shelters: 1670
Planned shelters: 1800
Ongoing extension: no
Camp area: 277,731m²

Demographics

51% male / 49% female

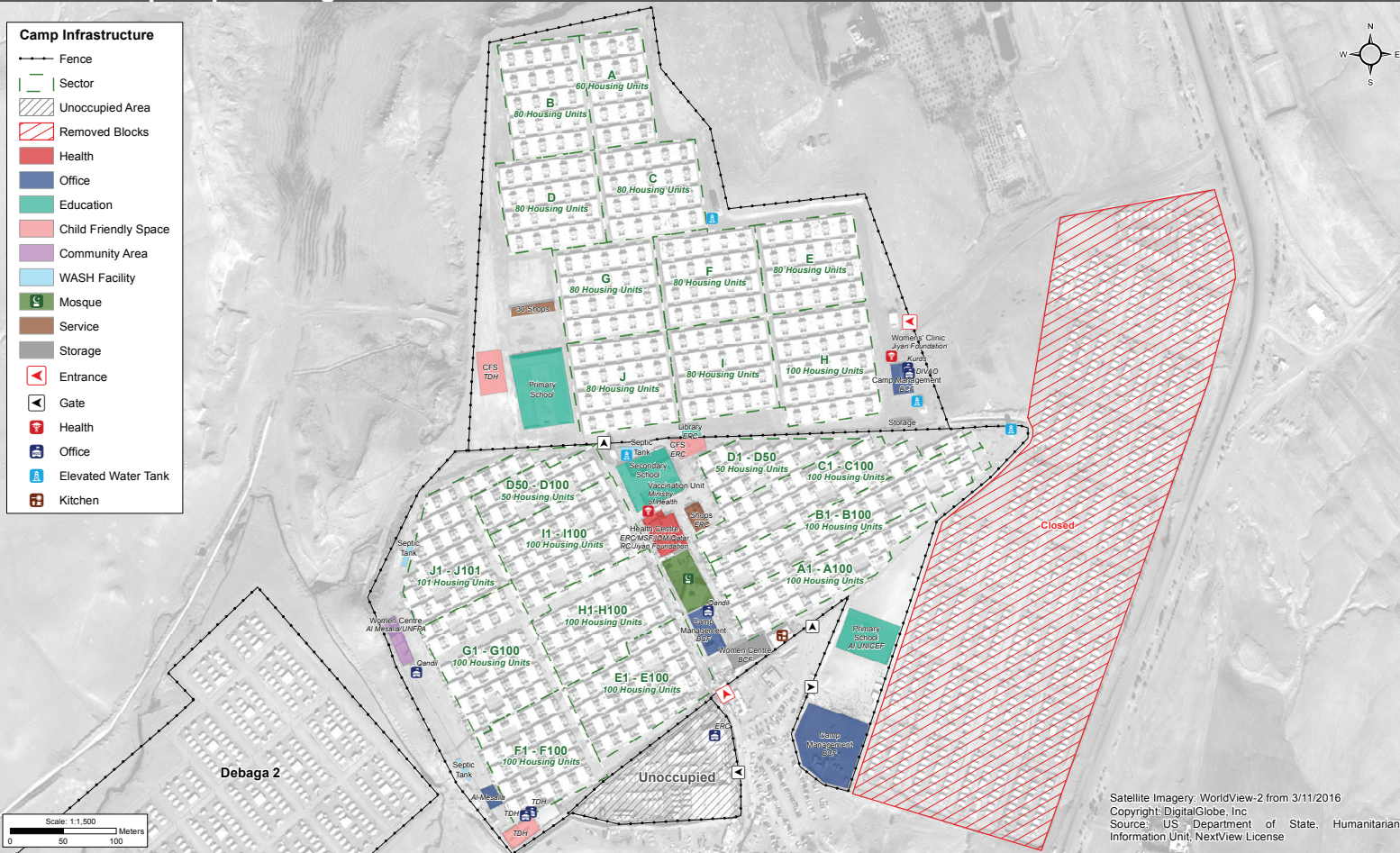
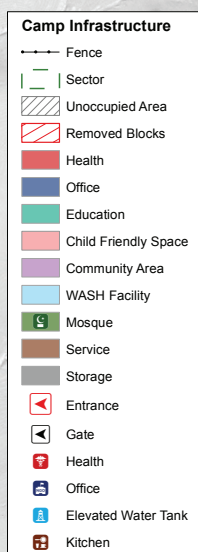
1% | Over 60 | 1%
19% | 18-59 | 21%
7% | 12-17 | 7%
11% | 6-11 | 9%
14% | 0-5 | 12%

Location Map



IDP Camp Map - Debaga 1

Lat. 35° 52' 56.374" N Long. 43° 48' 32.748" E



Sectoral Minimum Standards

| | | Target | Previous Round | Current Round | Achievement |
|------------|--|------------------------|-------------------|--------------------|-------------|
| CCCM | Average open area per household | Min. 30m ² | 35 m ² | 122 m ² | ● |
| Protection | % of IDPs registered on an individual basis (MODM/DDM) | 100% | 100% | 96% | ● |
| WASH | # of persons per latrine | Max. 20 | 7 | 5 | ● |
| | # of persons per shower | Max. 20 | 7 | 5 | ● |
| | Frequency of solid waste disposal | Min. weekly | Every day | Every month | ● |
| Shelter | Average area covered per person | Min. 3.5m ² | 6 m ² | 6 m ² | ● |
| | Average number of individuals per shelter | Max. 5 | 6 | 5 | ● |
| Food | % households accessed Family Food Parcel or equivalent in previous month | 100% | n/a* | 41% | ● |
| Health | Health services available on-site or within walking distance | Yes | yes | yes | ● |
| Education | % of children aged 6-11 attending formal school | 100% | 56% | 72% | ● |
| | % of children aged 12-17 attending formal school | 100% | 70% | 38% | ● |

*Method of calculation for food distribution has changed from previous rounds

Targets based on minimum standards agreed with the CCCM Cluster, Iraq. Findings based on household-level data, enumerator field observations, and camp management documentation
● Minimum standard reached, ● 50-99% of minimum standard reached, ● Less than 50% of minimum standard reached or not at all





IDP Camp Profile - Debaga 1

Erbil, Iraq
January 2018



Protection

Vulnerable groups

| | | |
|-------------------------------|----|---|
| Pregnant / lactating women | 4% | ■ |
| Chronically ill individual(s) | 3% | ■ |
| Disabled individual(s) | 1% | ■ |
| Female headed households | 7% | ■ |

Intentions

| | |
|-----|--|
| 2% | planned to move to a different location in next 3 months |
| 27% | reported needing financial support to return and restart in order to return safely to their area of origin |

Restrictions

| | |
|------|--|
| 100% | reported being able to leave the camp temporarily (e.g. to go to the market, for livelihood opportunities) |
|------|--|

Documentation

| | |
|-----|---|
| 6% | reported that one or more member is missing one or more documents |
| 17% | reported that at least one of the members missing documents is an adult (18+) |

Top three missing documents reported by those households*

| | |
|-------------------|-----|
| ID card | 83% |
| Birth certificate | 33% |
| PDS card | 17% |

Top two reasons for not attending education*

(of households with school-aged children not attending school)

| | |
|------------------------|-----|
| Child is disinterested | 29% |
| Newly arrived | 10% |



Access to information

Top three information sources regarding area of origin*

| | | |
|-----------------------------|-----|---|
| From others who visited | 75% | ■ |
| Personally visited | 16% | ■ |
| Others who have not visited | 9% | ■ |

Top three information needs*

| | | |
|--------------------|-----|---|
| Livelihood sources | 72% | ■ |
| Basic services | 69% | ■ |
| Security situation | 64% | ■ |



Livelihoods

3% reported not having an income source

Top three income sources*

| | | |
|-------------------------------|-----|---|
| Humanitarian aid | 59% | ■ |
| Government aid | 41% | ■ |
| Unskilled agricultural labour | 37% | ■ |

Top three reported livelihood coping strategies*

| | | |
|----------------------|-----|---|
| None | 33% | ■ |
| Charitable donations | 29% | ■ |
| Reduce spending | 19% | ■ |



Priority Needs

Top 3 reported priority needs*

| | | |
|--------------|-----|---|
| Food | 91% | ■ |
| Employment | 71% | ■ |
| Medical care | 24% | ■ |



WASH

Latrines

| | |
|------|---|
| 1% | reported access to public or communal latrines. Of those: |
| 100% | reported latrines were lockable from the inside |
| 100% | reported latrines had functioning lighting |
| 0% | reported latrines were gender segregated |

Top two most reported methods of waste removal

| | | |
|--------------|-----|---|
| Communal bin | 77% | ■ |
| Collected | 23% | ■ |

Primary drinking water sources

| | |
|------|---------------------|
| 100% | indoor water source |
| n/a | |

Access to drinking water

| | |
|----|---|
| 0% | reported at least 24 consecutive hours without access to water in the month prior to the assessment |
|----|---|



Shelter

5% reported flooding in their shelter in the previous year

Top observed shelter type

| | | |
|-------------------------|-------------------------------|-------------|
| Family Residential Unit | 100% | <div></div> |
| n/a | of tents have secondary cover | |

Top reported needed basic items*

| | | |
|----------------|-----|---|
| Heating fuel | 37% | ■ |
| Fuel storage | 35% | ■ |
| Winter clothes | 17% | ■ |

Top reported needed winter item*

| | | |
|----------|-----|---|
| Kerosene | 99% | ■ |
|----------|-----|---|

Electricity access

| | |
|--|----|
| Average number of hours of electricity per day | 15 |
|--|----|



Food Security

Reported access to food assistance

| | |
|------|---|
| 41% | reported having received Public Distribution System (PDS) assistance in the month prior to the assessment |
| 100% | reported access to a market within walking distance |

Top two food consumption coping strategies*

| | | |
|-------------------------|-----|---|
| Buy less expensive food | 61% | ■ |
| Limit portions | 22% | ■ |

*Respondents could select multiple responses

**Insufficient sample size; fewer than five respondents





IDP Camp Profile - Debaga 2

Erbil, Iraq
January 2018

Management agency: BCF
Manager/Focal point: Arif Abdula
Registration actor: BCF

Summary

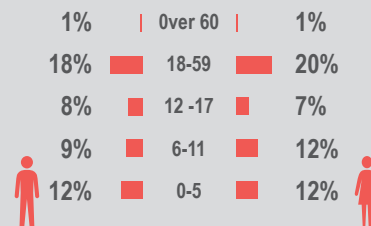
This profile provides an overview of conditions in Debaga 2 camp. Primary data was collected through household surveys on 19/12/2017. Households were randomly sampled to a 95% confidence level and a 10% margin of error, based on population figures provided by CCCM. In some cases, additional information from camp managers has been used to support findings.

Camp Overview

of individuals: 1254
of households: 230
Date opened: 6/5/2016
Occupied shelters: 303
Planned shelters: 303
Ongoing extension: no
Camp area: 435,404m²

Demographics

48% male / 52% female

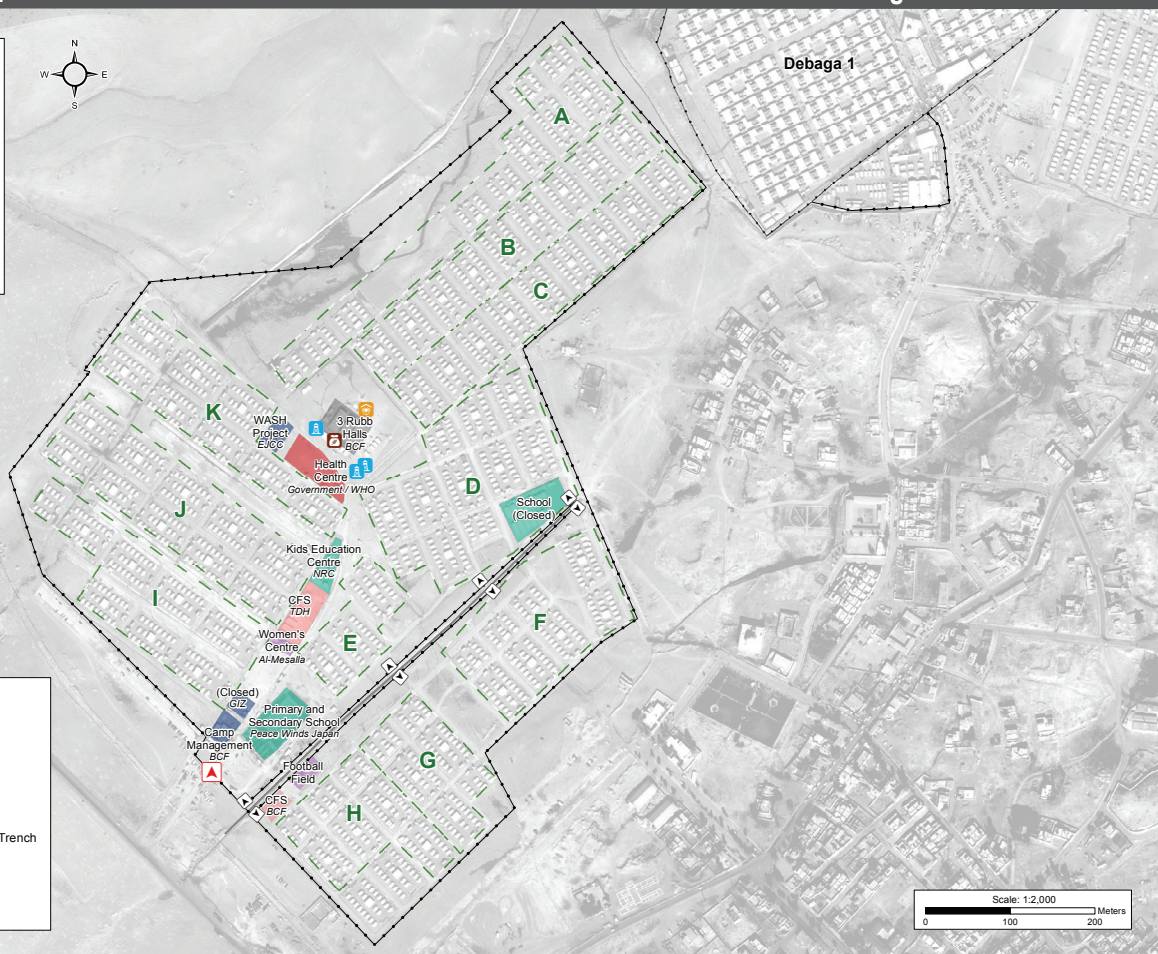
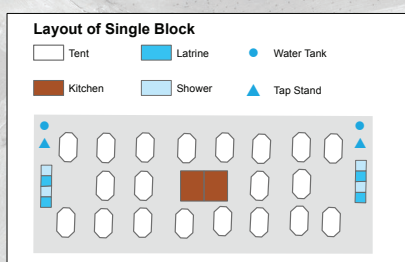


Location Map

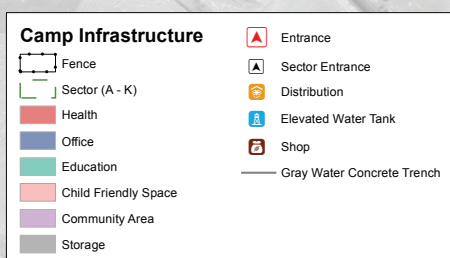


IDP Camp Map - Debaga 2

Lat. 35° 52' 30.511" N Long. 43° 47' 59.513" E



Satellite Imagery: Pleiades from 03/11/2016
Copyright: CNES
Source: Airbus DS



Sectoral Minimum Standards

| | | Target | Previous Round | Current Round | Achievement |
|------------|--|------------------------|--------------------|---------------------|-------------|
| CCCM | Average open area per household | Min. 30m ² | 394 m ² | 1789 m ² | ● |
| Protection | % of IDPs registered on an individual basis (MODM/DDM) | 100% | 98% | 98% | ● |
| WASH | # of persons per latrine | Max. 20 | 32 | 4 | ● |
| | # of persons per shower | Max. 20 | 32 | 4 | ● |
| | Frequency of solid waste disposal | Min. weekly | Every day | Every month | ● |
| Shelter | Average area covered per person | Min. 3.5m ² | 3.7 m ² | 3.7 m ² | ● |
| | Average number of individuals per shelter | Max. 5 | 6 | 4 | ● |
| Food | % households accessed Family Food Parcel or equivalent in previous month | 100% | n/a* | 33% | ● |
| Health | Health services available on-site or within walking distance | Yes | yes | yes | ● |
| Education | % of children aged 6-11 attending formal school | 100% | 49% | 75% | ● |
| | % of children aged 12-17 attending formal school | 100% | 65% | 44% | ● |

*Method of calculation for food distribution has changed from previous rounds

Targets based on minimum standards agreed with the CCCM Cluster, Iraq. Findings based on household-level data, enumerator field observations, and camp management documentation
● Minimum standard reached, ● 50-99% of minimum standard reached, ● Less than 50% of minimum standard reached or not at all





IDP Camp Profile - Debaga 2

Erbil, Iraq
January 2018



Protection

Vulnerable groups

| | | |
|-------------------------------|-----|--|
| Pregnant / lactating women | 5% | |
| Chronically ill individual(s) | 4% | |
| Disabled individual(s) | 2% | |
| Female headed households | 11% | |

Intentions

| | |
|-----|--|
| 6% | planned to move to a different location in next 3 months |
| 43% | reported needing financial support to return and restart in order to return safely to their area of origin |

Restrictions

| | |
|------|--|
| 100% | reported being able to leave the camp temporarily (e.g. to go to the market, for livelihood opportunities) |
|------|--|

Documentation

| | |
|-------|---|
| 4% | reported that one or more member is missing one or more documents |
| n/a** | reported that at least one of the members missing documents is an adult (18+) |

Top three missing documents reported by those households*

n/a**
n/a**
n/a**

Top two reasons for not attending education*

(of households with school-aged children not attending school)

| | |
|------------------------|-----|
| Child is disinterested | 36% |
| Child is disinterested | 5% |



Access to information

Top three information sources regarding area of origin*

| | | |
|-----------------------------|-----|--|
| From others who visited | 75% | |
| Personally visited | 16% | |
| Others who have not visited | 8% | |

Top three information needs*

| | | |
|--------------------|-----|--|
| Livelihood sources | 80% | |
| Basic services | 72% | |
| Security situation | 67% | |



Livelihoods

12% reported not having an income source

Top three income sources*

| | | |
|------------------|-----|--|
| Humanitarian aid | 63% | |
| Unskilled labour | 38% | |
| Government aid | 26% | |

Top three reported livelihood coping strategies*

| | | |
|----------------------|-----|--|
| Charitable donations | 34% | |
| None | 25% | |
| Spent savings | 21% | |



Priority Needs

Top 3 reported priority needs*

| | | |
|-----------------|-----|--|
| Food | 83% | |
| Employment | 79% | |
| Shelter support | 46% | |



WASH

Latrines

| | |
|-----|---|
| 88% | reported access to public or communal latrines. Of those: |
| 99% | reported latrines were lockable from the inside |
| 5% | reported latrines had functioning lighting |
| 99% | reported latrines were gender segregated |

Top two most reported methods of waste removal

| | | |
|-----------|------|--|
| Collected | 100% | |
| n/a | n/a | |

Primary drinking water sources

| | |
|------|---------------------|
| 100% | outdoor water point |
| n/a | |

Access to drinking water

| | |
|----|---|
| 0% | reported at least 24 consecutive hours without access to water in the month prior to the assessment |
|----|---|



Shelter

29% reported flooding in their shelter in the previous year

Top observed shelter type

| | | |
|------|------|-------------------------------|
| Tent | 100% | <div></div> |
| | 64% | of tents have secondary cover |

Top reported needed basic items*

| | | |
|----------------|-----|--|
| Fuel storage | 70% | |
| Heating fuel | 56% | |
| Winter clothes | 24% | |

Top reported needed winter item*

| | | |
|----------|------|--|
| Kerosene | 100% | |
|----------|------|--|

Electricity access

| | |
|--|---|
| Average number of hours of electricity per day | 8 |
|--|---|



Food Security

Reported access to food assistance

| | |
|-----|---|
| 33% | reported having received Public Distribution System (PDS) assistance in the month prior to the assessment |
| 99% | reported access to a market within walking distance |

Top two food consumption coping strategies*

| | | |
|-------------------------|-----|--|
| Buy less expensive food | 63% | |
| Limit portions | 26% | |

*Respondents could select multiple responses
**Insufficient sample size; fewer than five respondents





IDP Camp Profile - Harshm

Erbil, Iraq
January 2018

Management agency: BCF
Manager/Focal point: Rizkar Mohammed Hussein
Registration actor: Camp Management

Summary

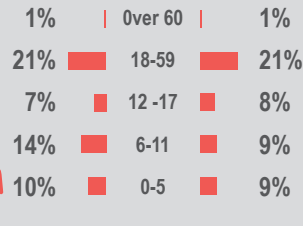
This profile provides an overview of conditions in Harshm camp. Primary data was collected through household surveys on 14/12/2017. Households were randomly sampled to a 95% confidence level and a 10% margin of error, based on population figures provided by CCCM. In some cases, additional information from camp managers has been used to support findings.

Camp Overview

of individuals: 1475
of households: 292
Date opened: 9/19/2014
Occupied shelters: 300
Planned shelters: 300
Ongoing extension: no
Camp area: 97,458m²

Demographics

53% male / 47% female



Location Map



IDP Camp Map - Harshm

Lat. 36° 15' 22.625" N Long. 43° 59' 41.865" E



Sectoral Minimum Standards

| | | Target | Previous Round | Current Round | Achievement |
|------------|--|------------------------|--------------------|--------------------|-------------|
| CCCM | Average open area per household | Min. 30m ² | 265 m ² | 268 m ² | ● |
| Protection | % of IDPs registered on an individual basis (MODM/DDM) | 100% | 99% | 100% | ● |
| WASH | # of persons per latrine | Max. 20 | 19 | 5 | ● |
| | # of persons per shower | Max. 20 | 19 | 5 | ● |
| | Frequency of solid waste disposal | Min. weekly | Every day | Every month | ● |
| Shelter | Average area covered per person | Min. 3.5m ² | 5.6 m ² | 5.6 m ² | ● |
| | Average number of individuals per shelter | Max. 5 | 6 | 5 | ● |
| Food | % households accessed Family Food Parcel or equivalent in previous month | 100% | n/a* | 3% | ● |
| Health | Health services available on-site or within walking distance | Yes | yes | yes | ● |
| Education | % of children aged 6-11 attending formal school | 100% | 49% | 84% | ● |
| | % of children aged 12-17 attending formal school | 100% | 84% | 65% | ● |

*Method of calculation for food distribution has changed from previous rounds

Targets based on minimum standards agreed with the CCCM Cluster, Iraq. Findings based on household-level data, enumerator field observations, and camp management documentation
● Minimum standard reached, ● 50-99% of minimum standard reached, ● Less than 50% of minimum standard reached or not at all





IDP Camp Profile - Harshm

Erbil, Iraq

January 2018



Protection

Vulnerable groups

| | | |
|-------------------------------|-----|--|
| Pregnant / lactating women | 5% | |
| Chronically ill individual(s) | 6% | |
| Disabled individual(s) | 2% | |
| Female headed households | 10% | |

Intentions

| | |
|-----|--|
| 1% | planned to move to a different location in next 3 months |
| 34% | reported needing financial support to return and restart in order to return safely to their area of origin |

Restrictions

| | |
|------|--|
| 100% | reported being able to leave the camp temporarily (e.g. to go to the market, for livelihood opportunities) |
|------|--|

Documentation

| | |
|-----|---|
| 6% | reported that one or more member is missing one or more documents |
| 40% | reported that at least one of the members missing documents is an adult (18+) |

Top three missing documents reported by those households*

| | |
|-------------------------|-----|
| ID card | 60% |
| PDS card | 40% |
| Citizenship certificate | 20% |

Top two reasons for not attending education*

(of households with school-aged children not attending school)

| | |
|------------------------|-----|
| Child is disinterested | 33% |
| Newly arrived | 22% |



Access to information

Top three information sources regarding area of origin*

| | | |
|-----------------------------|-----|--|
| From others who visited | 68% | |
| Personally visited | 15% | |
| Others who have not visited | 15% | |

Top three information needs*

| | | |
|--------------------|-----|--|
| Security situation | 85% | |
| Livelihood sources | 61% | |
| Basic services | 59% | |



Livelihoods

1% reported not having an income source

Top three income sources*

| | | |
|---------------------|-----|--|
| Humanitarian aid | 66% | |
| Unskilled labour | 22% | |
| Low skilled service | 13% | |

Top three reported livelihood coping strategies*

| | | |
|----------------------|-----|--|
| None | 35% | |
| Take on debt | 25% | |
| Charitable donations | 23% | |



Priority Needs

Top 3 reported priority needs*

| | | |
|--------------|-----|--|
| Food | 80% | |
| Employment | 58% | |
| Medical care | 35% | |



WASH

Latrines

| | |
|------|---|
| 9% | reported access to public or communal latrines. Of those: |
| 100% | reported latrines were lockable from the inside |
| 86% | reported latrines had functioning lighting |
| 14% | reported latrines were gender segregated |

Top two most reported methods of waste removal

| | | |
|--------------|-----|--|
| Communal bin | 91% | |
| Collected | 9% | |

Primary drinking water sources

| | |
|-----|---------------------|
| 99% | indoor water source |
| 1% | outdoor water point |

Access to drinking water

| | |
|----|---|
| 5% | reported at least 24 consecutive hours without access to water in the month prior to the assessment |
|----|---|



Shelter

28% reported flooding in their shelter in the previous year

Top observed shelter type

| | | |
|---------|------|-------------------------------|
| Caravan | 100% | <div></div> |
| | n/a | of tents have secondary cover |

Top reported needed basic items*

| | | |
|--------------|-----|--|
| Heating fuel | 61% | |
| Fuel storage | 44% | |
| Jerry can | 25% | |

Top reported needed winter item*

| | | |
|----------|-----|--|
| kerosene | 99% | |
|----------|-----|--|

Electricity access

| | |
|--|----|
| Average number of hours of electricity per day | 13 |
|--|----|



Food Security

Reported access to food assistance

| | |
|------|---|
| 3% | reported having received Public Distribution System (PDS) assistance in the month prior to the assessment |
| 100% | reported access to a market within walking distance |

Top two food consumption coping strategies*

| | | |
|-------------------------|-----|--|
| Buy less expensive food | 65% | |
| Limit portions | 28% | |

*Respondents could select multiple responses
**Insufficient sample size; fewer than five respondents

