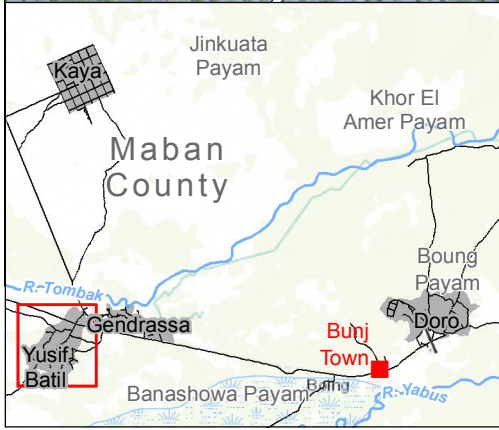
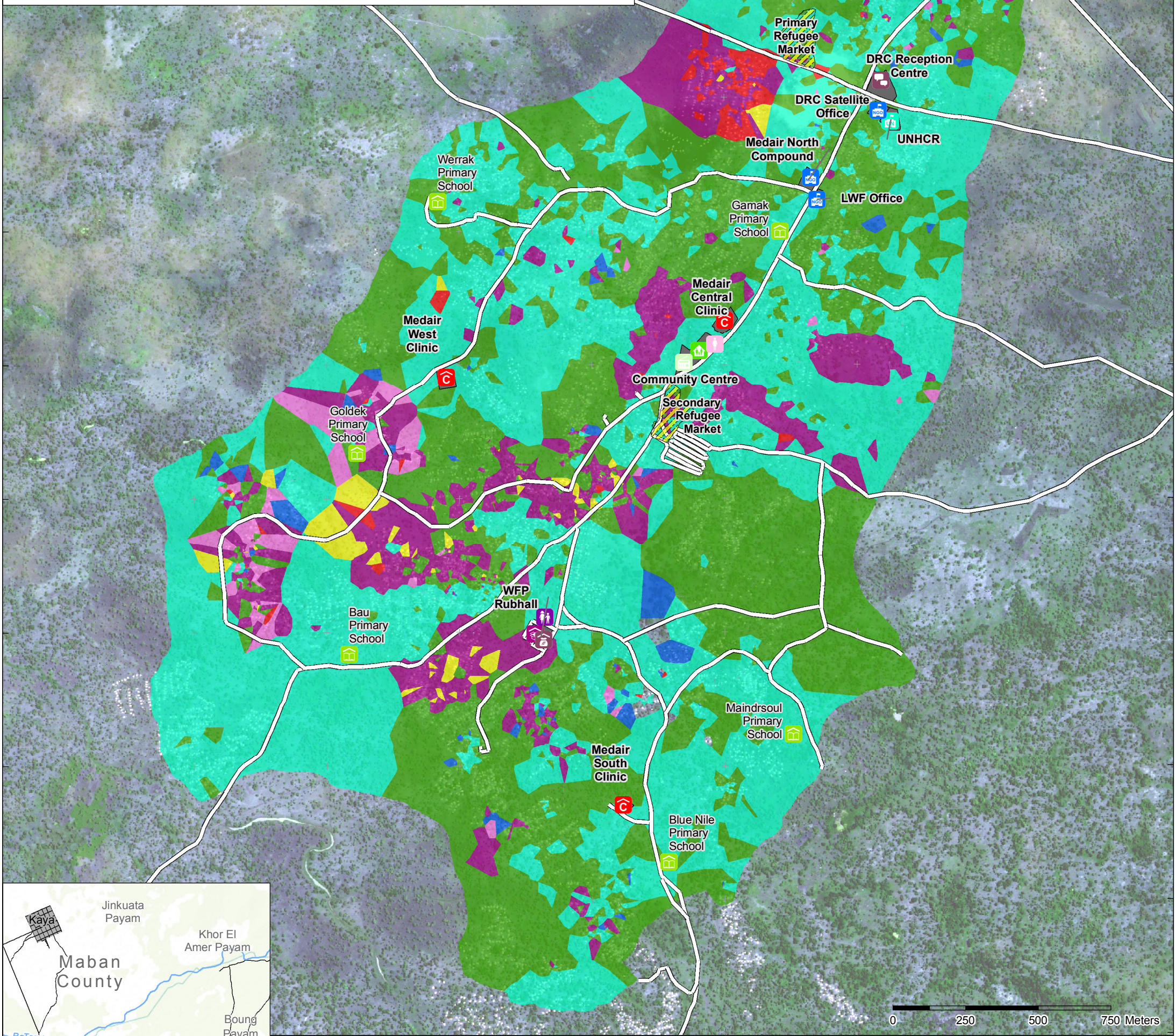


**Introduction:** This map shows the greatest priority needs identified by refugees based on a camp survey of 7,189 households by REACH in July 2015. This is approximately 78% of the 9,242 households registered by UNHCR in January 2015. The data shown is expected to be representative of the population in Yusif Batil Camp due to the robust sampling methodology used.

**Methodology:** The Survey used a sample size of 7,189 households; with an official number of 9,242 households, this sample size ensures a 99% confidence level with a 0.72% margin of error. Voronoi polygons were generated from the GPS locations of each household, so any space in a given polygon is closest to that household's point, roughly approximating that household's plot. This map shows an aggregation of responses – for privacy reasons, it does not display each household's satisfaction with policing effectiveness. **The polygons in this map should in no way be considered as a plot of land that the household owns.**

**Results:** 44% of respondents said that a lack of security was the most pressing need, followed by a lack of food at 38%. 13% were concerned about education. Access to healthcare, water, NFIs and employment were noted by 1% of refugees



### Reported Priorities

- Education
- Employment
- Food
- Health
- NFIs
- Security
- Water

### NGOs

- Logistic Base
- Reception Centre
- NGO Office
- UNHCR Office
- Storage Rubhall

### Community Centres

- Adult Education
- DRC Community Centre
- Police Station
- Women's Centre
- Youth Centre

### Health Centres

- Hospital
- Clinic
- Distribution Site

### Camp Features

- Camp Boundary

- Compound Boundary
- Market
- Roads

Data sources: roads: PAE (2015); Water Points: Medair (2015); shelters: UNOSAT (2013); satellite imagery: WV-2 satellite (2013); administrative units, hydrology: OCHA COD; Basemap: Esri; All other features: REACH (2015).

Note: Data, designations and boundaries contained on this map are not warranted to be error-free and do not imply acceptance by the REACH partners, associates, donors or any other stakeholder mentioned on this map.

Coordinate System: GCS WGS 1984  
Contact: reach.mapping@impact-initiatives.org

File: REACH\_SSD\_Map\_YusifBatil\_CAMP\_GreatestNeed\_07JUL2015\_A3