

From Response to Resilience in Maiduguri

IMPACT-Phase 1:
Neighbourhood Delineation

December 17, 2019



IMPACT Shaping practices
Influencing policies
Impacting lives

Agenda

- ❖ What is AGORA?
- ❖ Neighbourhood delineation: Objectives
- ❖ Secondary data review
- ❖ Primary data collection
- ❖ Pre-selection of neighbourhoods
- ❖ Mapping focus group discussion (MFGDs)



What is AGORA?

- ❖ AGORA is an interagency initiative of ACTED and IMPACT Initiatives
- ❖ AGORA aims at promoting stabilization through strengthening local crisis response capacities and enabling inclusive recovery efforts
- ❖ Use of settlements as the territorial unit for the planning, coordination and provision of aid and basic services
- ❖ Use of area-based approaches (ABA)
- ❖ Projects implemented in Niger, Uganda, Ukraine and Afghanistan



Phase 1: Neighbourhood Delineation

Main objective: To identify perceived neighborhood boundaries across the urban area of Maiduguri and provide consortium (IRC, ACTED and IMPACT) with enough information for the selection of three target neighborhoods

Specific objectives:

To pre-identify settlement areas prone to natural & man-made hazards and with a high IDP density in Maiduguri.

To identify neighbourhood boundaries perceived by the local population within the pre-identified settlement areas of the city of Maiduguri.

To identify the critical service locations, service gaps, general demographics, and hazard exposure in the neighbourhoods.

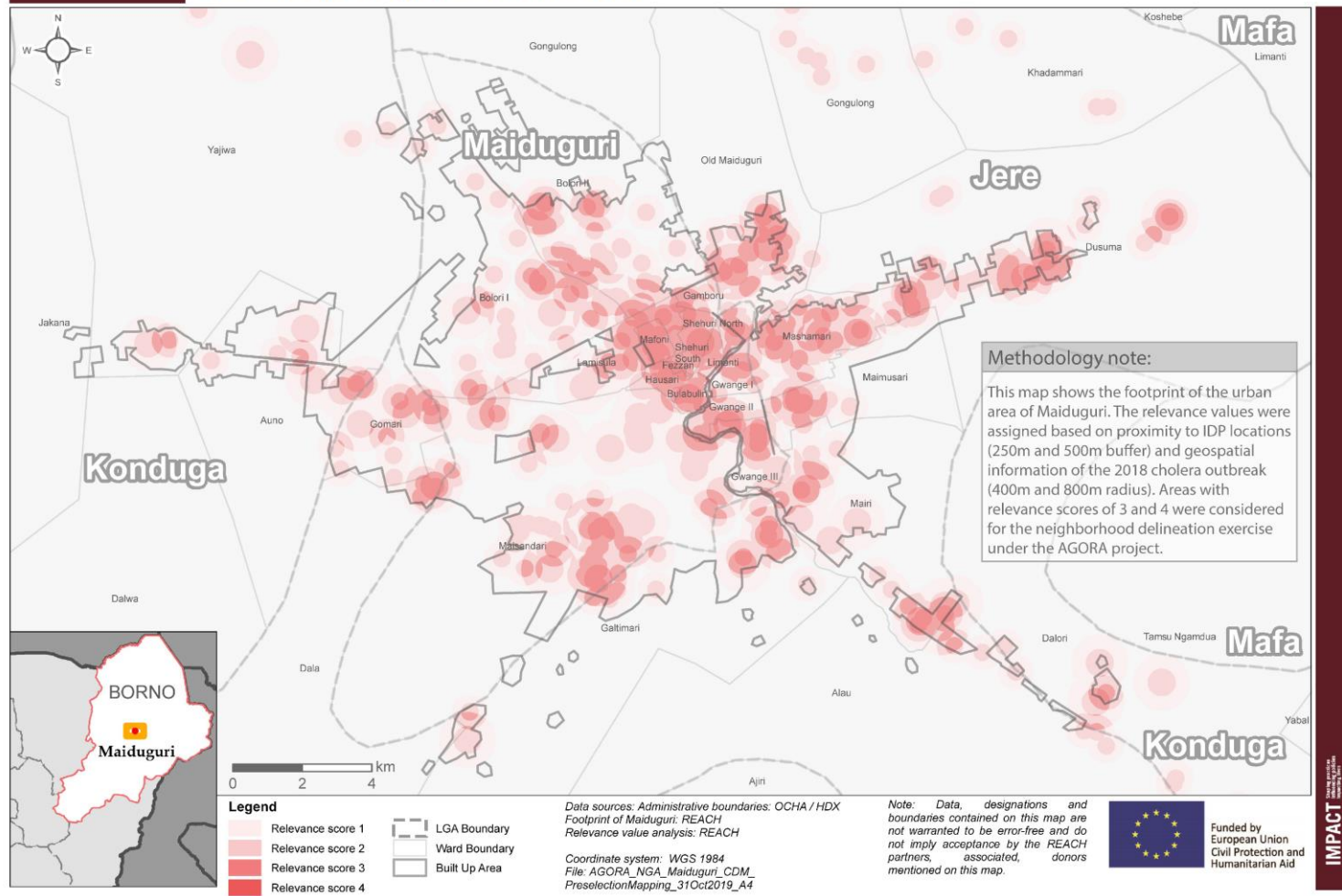


Step 1: Pre-selection of areas for neighborhood delineation

- **Secondary data review (geo-data)**
 - Natural hazards (cholera outbreak)
 - IDP locations

Output: Map illustrating areas with high density of IDP populations and geospatial information from the 2018 cholera outbreak.

The map shows the areas which should be in the focus of the subsequent neighbourhood delineation including where key informant data would be collected.



Step 2: Primary data collection for Neighbourhood delineation

- **Methodology Overview:**

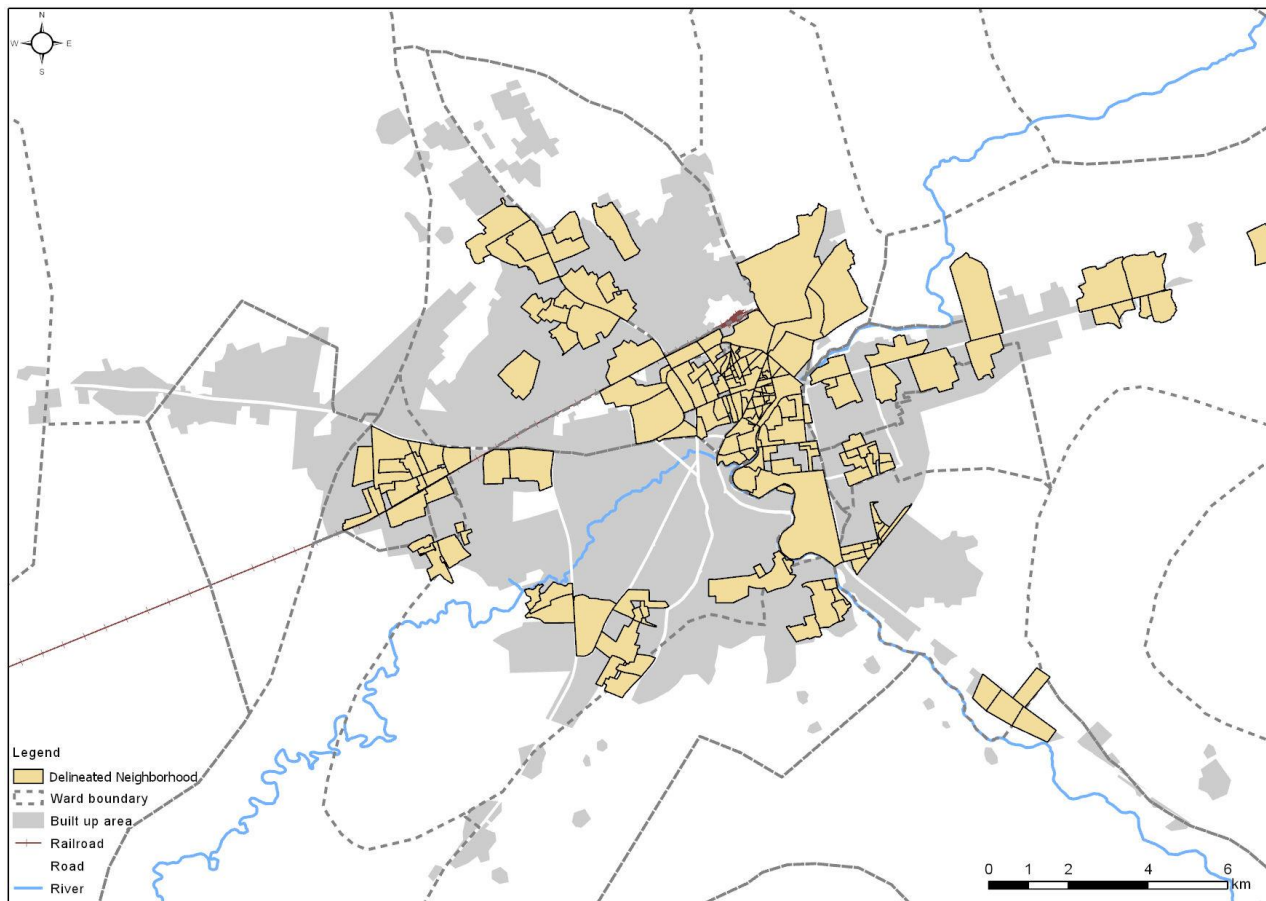
- ❖ Guided GPS-tracked walk around the neighbourhoods boundaries with traditional leaders (Bulamas), to reflect the communities' perceived area boundaries rather than administrative boundaries.
- ❖ Key Informant interviews with traditional leaders (Bulamas) to collect information on basic neighbourhood characteristics from the pre-selected neighbourhoods in step 1.

Data Collection

- ❖ Data was collected from 5 to 28 November by a team of 8 enumerators, with a follow-up on 9 to 10 December in some neighbourhoods.
- ❖ **Outputs:** A total of 170 factsheets (FS) from the analysis of key informant data were produced (one FS for each neighbourhood).



Assessment coverage



From Response to Resilience in Maiduguri

Phase1: Neighbourhood Delineation

Nigeria, December 2019



IMPACT Shaping practices
Influencing policies
Impacting lives

AGORA

AGORA, a joint initiative of ACTED and IMPACT Initiatives, was founded in 2016. AGORA promotes efficient, inclusive and integrated local planning, aid response and service delivery in contexts of crisis through applying settlement-based processes and tools.

From Response to Resilience Project

The project is implemented by a consortium comprising of International Rescue Committee (IRC), ACTED, and IMPACT. This Phase 1 conducted by IMPACT will inform in which communities ACTED and IRC will implement their activities. Those activities involve community fora on the neighbourhood and city level, capacity development for decision makers & first responders, and resilience plans for the three targeted neighbourhoods.

Assessment coverage

The selection of neighbourhoods of the city of Maiduguri was based on secondary data review. The main criteria included the proximity of Internally Displaced People (IDPs) settlements (250m and 500m buffer) and geospatial information of the 2018 cholera outbreak (400m and 800m radius).

Methodology

Guided GPS-tracked walks around the neighbourhood boundaries were conducted with traditional leaders, to reflect the communities' perceived boundaries rather than administrative boundaries.

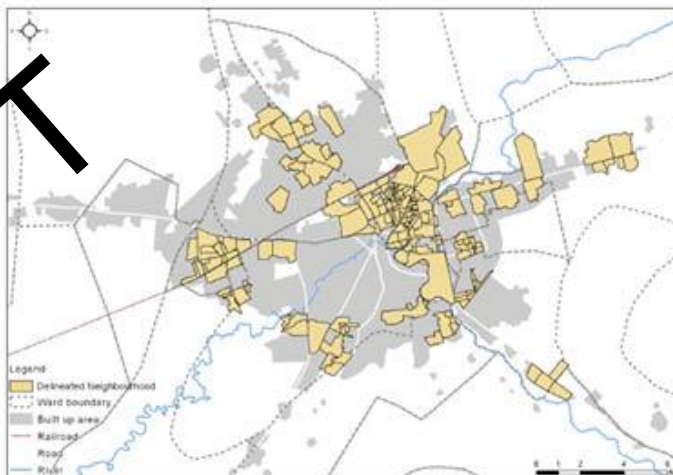
Key Informant Interviews (KIIs) were conducted with traditional leaders (bulamas) to collect information on selected neighbourhood characteristics.

Data collection was done from 5 to 28 November 2019 with a follow up on 30 December 2019 in the neighbourhoods by teams of 8 enumerators supervised by one senior field officer and two field officers.



Assessment coverage

Map 1: Assessed neighbourhoods

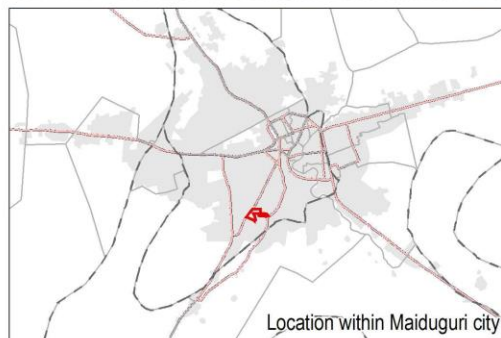
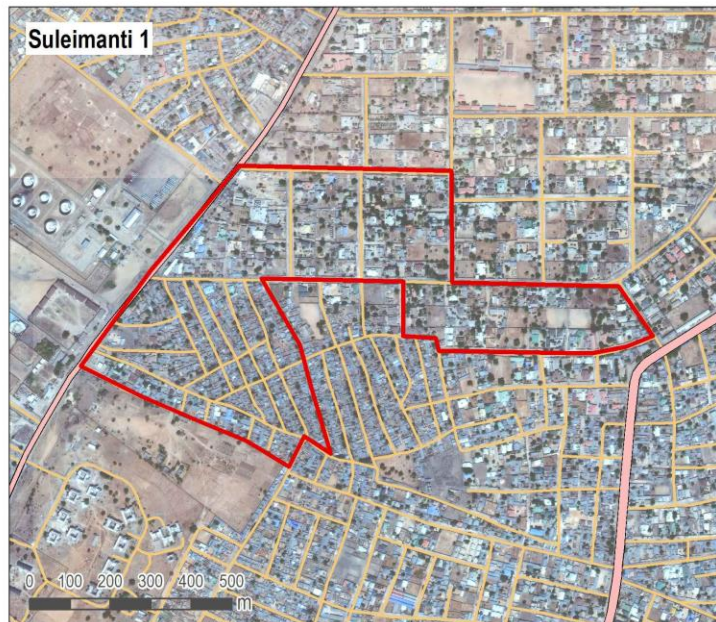


Link to Terms of Reference: https://www.impact-repository.org/document/impact/949b22a9/AGORA_NGA_TOR_Maiduguri_October_2019.pdf

Link to Methodology Note Phase 1: https://www.impact-repository.org/document/impact/893defd1/AGORA_NGA_R2R_Methodology_Note_Phase1_Maiduguri_October2019-V2.pdf

For more detailed information regarding research design of Phase 1 kindly see Annex 1

IMPACT Initiatives is a leading Geneva-based think-and-do tank that works to improve the effectiveness and impact of humanitarian, stabilisation and development action through data, partnerships and capacity building programmes.



- Neighbourhood
- LGA boundary
- Ward boundary
- Main road
- Secondary road
- Maiduguri footprint

Data sources:
Administrative boundaries: OCHA / HDX
Footprint of Maiduguri: REACH
Neighbourhood boundaries: AGORA

Coordinate system: WGS 1984

GENERAL

LGA: Maiduguri Metropolitan Council (MMC) **Ward:** Maisandari
Number of households: 2000 **Number of IDP households:** 700
IDP Locations: Integrated with host community

SERVICES

Services available to population:	Services not available to population:
Health services	Nutrition services
Market	Education services
Enough water within the neighbourhood	Public latrines

HAZARDS

Natural hazards:	Impact:
Flood	No impact
Insects or animal diseases	No impact
Human made hazards:	Impact:
Electricity blackout	Moderate impact
Fire	Moderate impact

ACTORS

Actors active in the neighbourhood:
NGO

DRAFT

No.: 164

Satellite Imagery: WorldView-2 from 18 March 2018
Copyright: © 2019, DigitalGlobe
Source: US Department of State, Humanitarian Information Unit, NextView Licence

Note: Data, designations and boundaries contained on this map are not warranted to be error-free and do not imply acceptance by the AGORA partners, associates, donors mentioned on this map.



Funded by
European Union
Civil Protection and
Humanitarian Aid

Step 3: Mapping Focus Group Discussions (MFGDs)

- ❖ **Main objective:** To map out critical service delivery locations and provide more information about vulnerabilities and exposure to hazards and community boundaries.



Mapping Focus Group Discussions (MFGDs):

- ❖ Respondents for the MFGDs were community members knowledgeable about the neighbourhood characteristics and were recommended by the traditional leaders (Bulamas).
- ❖ A total of 10 MFGDs were conducted by 4 teams of facilitators.



Mapping Focus Group Discussions (MFGDs):

- **Selection Criteria:**

- ❖ Key informant interview data collected was used to pre-select the neighbourhoods
- ❖ Five most-vulnerable neighbourhoods were selected following a four-category criterion that was previously agreed upon by consortium partners which included:
 - 1) IDPs to Host population ratio of the neighbourhoods (neighbourhoods that have at least 20% of IDP households)
 - 2) Neighbourhoods prone to at least two natural hazards
 - 3) Neighbourhoods prone to at least two man-made hazards
 - 4) Neighbourhoods with limited or no access to at least three basic services (services selected for this criterion included health access, education, public or private latrine, access to nutrition services and market access).

Mapping Focus Group Discussions (MFGDs):

- **Selection Criteria:**

- ❖ All the pre-selected neighbourhoods were deemed small as per the population size and were therefore clustered with neighbouring neighbourhoods that met at least some or all the set criteria.
- ❖ The selection criteria for the second round of selection included:
 - 1) IDPs to host population ratio of the neighbourhoods (neighbourhoods that have at least 20% of IDP households)
 - 2) Neighbourhoods prone to at least one natural hazard
 - 3) Neighbourhoods prone to at least one man-made hazards
 - 4) Neighbourhoods adjoining the neighbourhoods selected in the first round

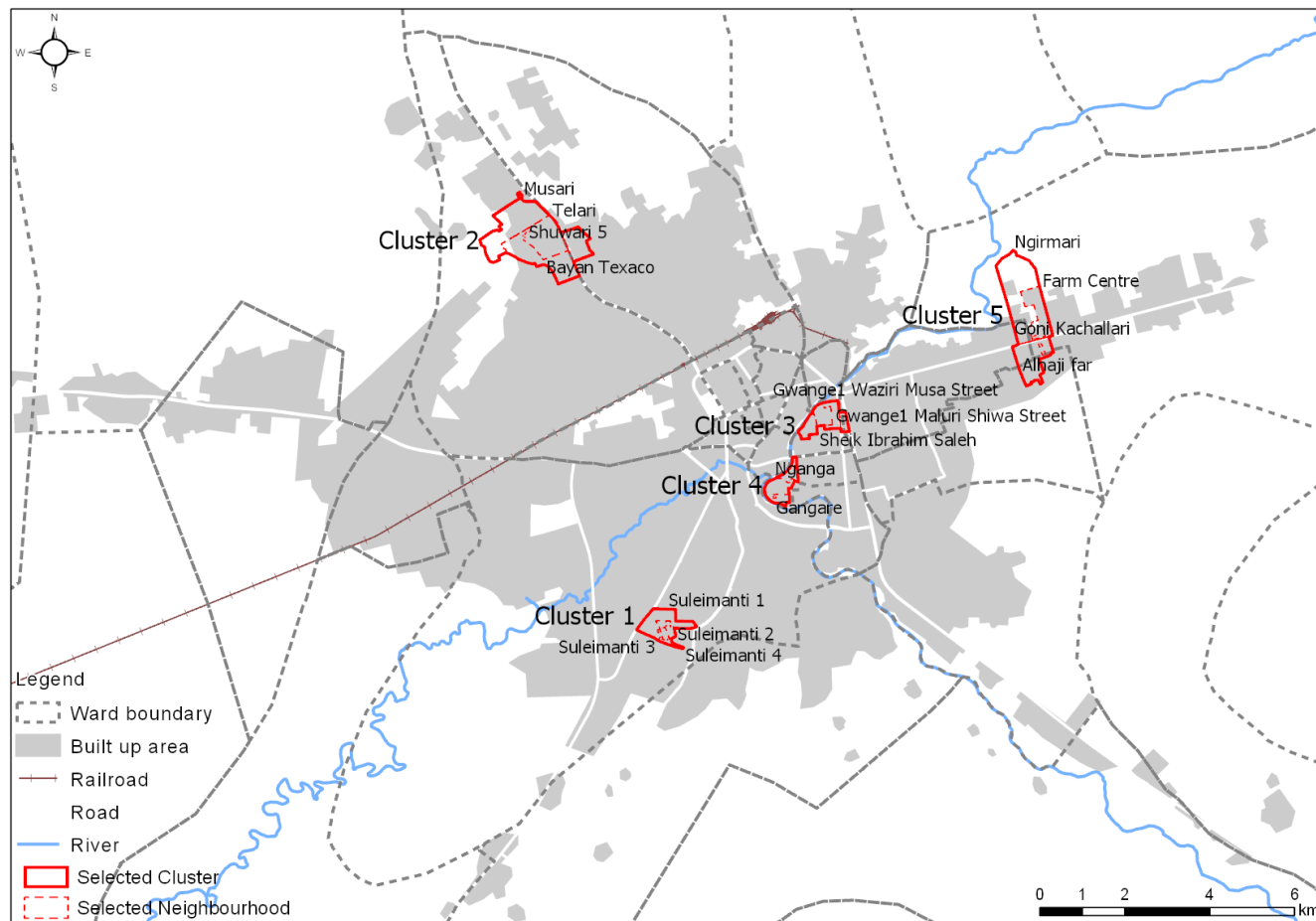
Mapping Focus Group Discussions (MFGDs):

- **Final selection:**

❖ Below are the final pre-selected neighbourhood clusters:

Neighborhood Name or Cluster	Total Population (Individuals)
Cluster 1: Sulaimanti 1; Sulaimanti 2; Sulaimanti 3; Sulaimanti 4	18,000
Cluster 2: Musari; Shuwari 5; Telari; Bayan Texaco	18,700
Cluster 3: Waziri Musa street; A.B. Hassan Street; Gwange Malut Shuwa street; Gwange Sheik Ibrahim Saleh	30,500
Cluster 4: Nganga; Gangare	24,000
Cluster 5: Ngirmari Farm Center; Alhaji Tar; Goni Kachallari	12,000

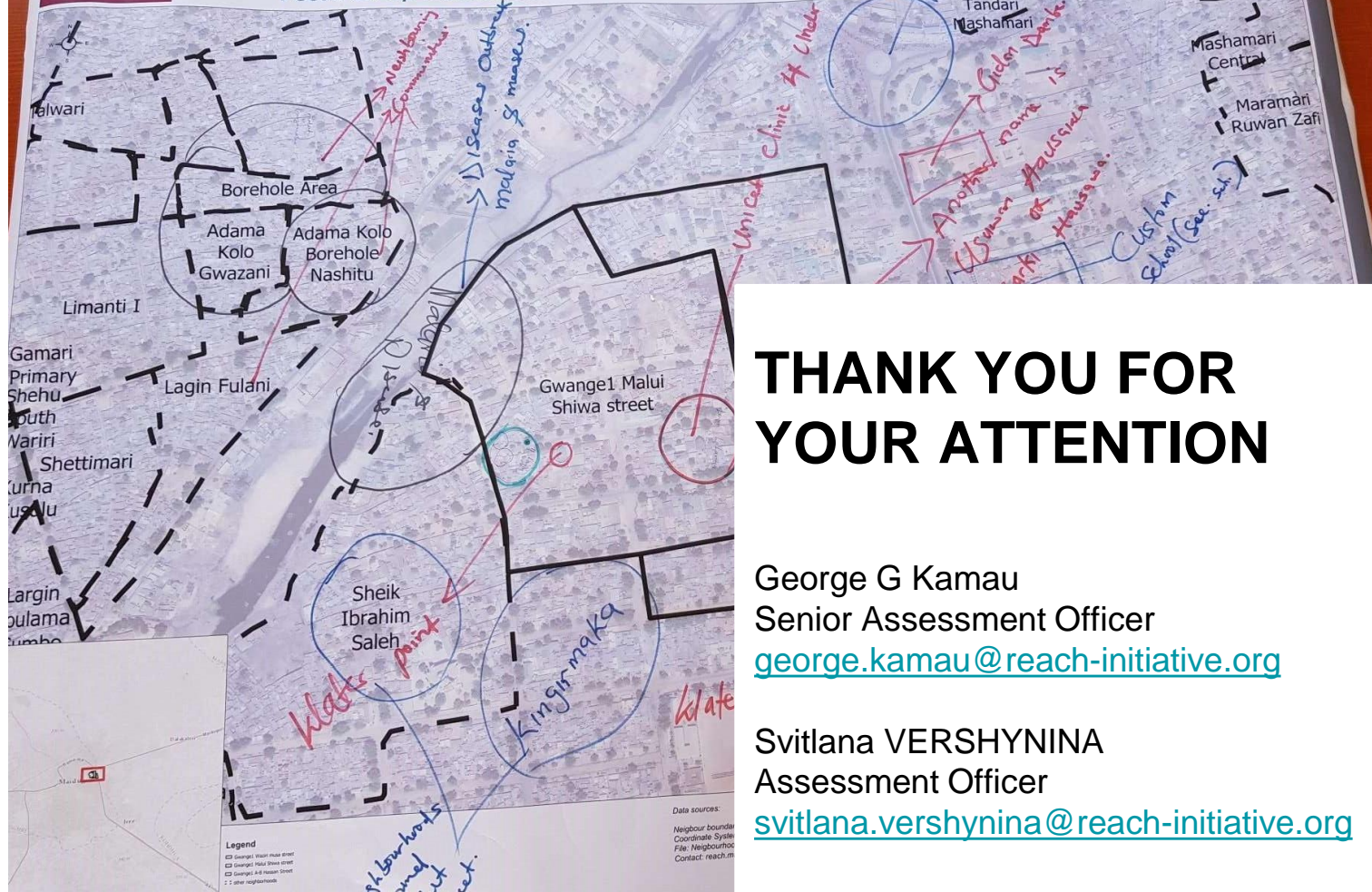
Map of neighbourhood clusters:



QUESTIONS?



IMPACT Shaping practices
Influencing policies
Impacting lives



THANK YOU FOR YOUR ATTENTION

George G Kamau
Senior Assessment Officer
george.kamau@reach-initiative.org

Svitlana VERSHYNINA
Assessment Officer
svitlana.vershynina@reach-initiative.org

Step 4: Neighbourhood selection with consortium members and key stakeholders

Criteria: Service provision gaps, Host IDP Ratio, hazard exposure, Priority areas

Options: Three options will be provided from which three clusters of neighbourhoods (Bulamaris) will be selected for the project.

Step 4: Neighbourhood selection with consortium members and key stakeholders

OPTION ONE:

- Cluster 1: Sulaimanti 1; Sulaimanti 2; Sulaimanti 3; Sulaimanti 4
- Cluster 3: Waziri Musa street; A.B. Hassan Street; Gwange Malut; Gwange Sheik Ibrahim Saleh
- Cluster 5: Ngirmari Farm Center; Alhaji Tar; Goni Kachalari

Step 4 Neighbourhood selection with consortium members and key stakeholders

OPTION TWO:

- Cluster 2: Musari; Shuwari 5; Telari; Bayan Texaco
- Cluster 3: Waziri Musa street; A.B. Hassan Street; Gwange Malut, Gwange Sheik Ibrahim Saleh
- Cluster 5: Ngirmari Farm Center; Alhaji Tar; Goni Kachalari

Step 4: Neighbourhood selection with consortium members and key stakeholders

OPTION THREE:

- Cluster 3: Waziri Musa street; A.B. Hassan Street; Gwange Malut, Gwange Sheik Ibrahim Saleh
- Cluster 4: Nganga; Gangare
- Cluster 5: Ngirmari Farm Center; Alhaji Tar; Goni Kachalari

Step 4: Neighbourhood selection with consortium members and key stakeholders

OPTIONS:

Option	Clusters
One	1, 3, 5
Two	2, 3, 5
Three	3, 4, 5