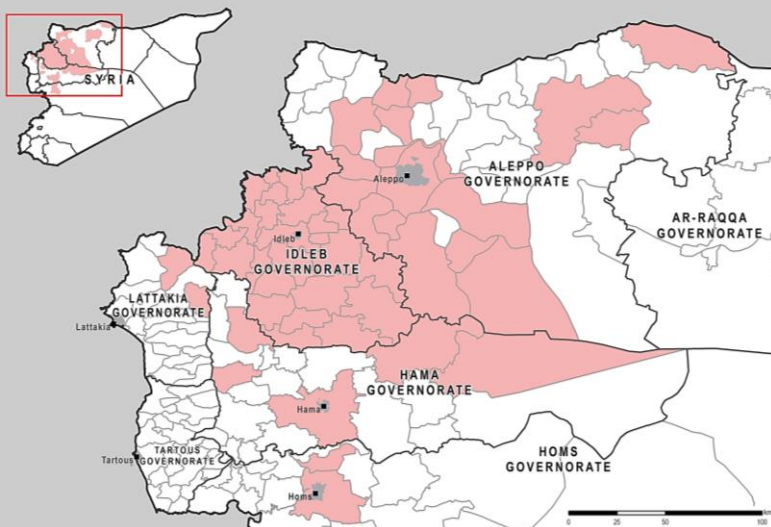


## INTRODUCTION

Since early 2015, the Camp Coordination and Camp Management (CCCM) Cluster-led Displacement Tracking Coordination has provided regular updates on internal displacement across northern Syria, based on site-level information provided by NGO and INGO partners.

This forms the basis of the up-coming IDP Situation Monitoring Initiative (ISMI), implemented by UNHCR, CCCM Cluster members and REACH. Building upon this system ISMI aims to enable more frequent, consistent and uniform approaches to IDP monitoring in northern Syria, making operational displacement data more accessible to a wider range of humanitarian actors while expanding the types of data collected.



This report presents an analysis of data collected in the framework of the Displacement Tracking Coordination, between 18 January and 2 September 2016. This factsheet provides an overview of displacement trends since the beginning of 2016, looking at overall IDP numbers, major IDP movements, and shelter type occupation, as well as analysis of the most common areas of origin and of displacement.

## NORTHERN SYRIA: CONFLICT DYNAMICS & DISPLACEMENT JANUARY – SEPTEMBER 2016

January – March

Large scale displacement north of Aleppo city, primarily to **Bab al Salam** and **A'zaz**, triggered by intensified conflict since end of January. Nationwide cessation of hostilities agreement (CHA) comes into effect, leading to a reduction in violence and scaled-up humanitarian operations in Aleppo and Idlib governorates to respond to displacement. Conflict around **Palmyra** city induces displacement, including to Aleppo and Idlib governorates. Enduring intense fighting in communities in Deir-ez-Zor, Aleppo, Ar-Raqqa, Al-Hasakeh and Homs continues to displace people while access remains severely limited<sup>1</sup>.

April – May

Al-Waer in **Homs** remains almost entirely closed off since 12 March 2016. Fighting east of **A'zaz town** increases the number of IDPs in A'zaz sub-district from 75,000 to 115,000 in April-May. Ekkdeh, Al-Harameen, Bab Al-Iman, Sharmarin, Bab Al-Nour and Shamarik IDP camps are closed due to proximity to front lines<sup>4</sup>. Escalation in violence in **Aleppo** since end of April results in death and injury of hundreds of civilians. Fighting results in three-day closure of Al-Castello road into eastern Aleppo, limiting population's freedom of movement. In May, offensive focused on **Menbij town** starts, Al-Kamoneh IDP settlement southeast of Sarmada (Idlib) is attacked, while attacks on civilians, including on markets, in **Idlib** governorate and city continue<sup>2</sup>.

June – July

Shelling and airstrikes in **eastern Aleppo** continue, while closure of Al-Castello road into eastern Aleppo city cuts humanitarian access and curtails freedom of movement of 300,000 people. Intensified fighting east of **A'zaz town** since end of May leads to large scale displacement. Fighting in **Menbij** displaces 46,800 people since May, while 30-40,000 people remain trapped in the town. Resumed shelling and airstrikes on **Idlib city** induces displacement of 30,000 families to neighbouring areas in June-July<sup>3</sup>.

August – September

Control of **Menbij town** changes in August, leading to returns despite wide-spread presence of unexploded ordnance (UXO). Fighting persists in **eastern Aleppo** throughout August, with airstrikes continuing to hit civilian infrastructure, intensifying to unprecedented levels after a one-week ceasefire collapses in mid-September. 250-300,000 people remain *de facto* besieged in eastern Aleppo city. Aerial attacks continue in Aleppo countryside. Airstrikes continue to hit markets in **Idlib city**, as well as Tal Al-Seeh IDP camp in southern Idlib governorate<sup>4</sup>.

<sup>1</sup> REACH, [Situation Overview: Displacement from Northern Aleppo](#), 8 February 2016; OCHA, [Syria Crisis, Bi-Weekly Situation Report No. 01](#), 11 March 2016, p. 1; BBC News, [Syria civil war: Assad hails Palmyra recapture from IS](#), 27 March 2016; OCHA, [Syria Crisis, Bi-Weekly Situation Report No. 2](#), 31 March 2016, p. 1-2.

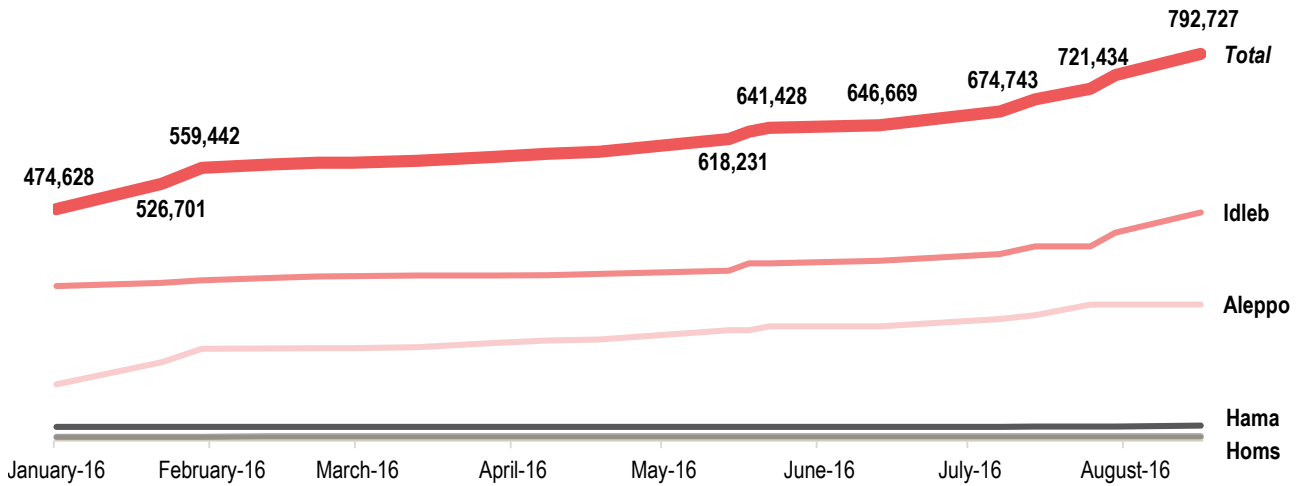
<sup>2</sup> OCHA, [Syria Crisis, Bi-Weekly Situation Report No. 03](#), 22 April 2016, p. 1, 4, 6; [Syria Crisis, Bi-Weekly Situation Report No. 04](#), 6 May 2016, p. 1, 3-7; [Syria Crisis, Bi-Weekly Situation Report No. 05](#), 22 May 2016, p. 4-6; [Syria Crisis, Bi-Weekly Situation Report No. 06](#), 06 June 2016, p. 2-3.

<sup>3</sup> OCHA, [Syria Crisis, Bi-Weekly Situation Report No. 06](#), 6 June 2016, p. 2-3; [Syria Crisis, Bi-Weekly Situation Report No. 07](#), 20 June 2016, p. 3-4; [Syria Crisis, Bi-Weekly Situation Report No. 08](#), 4 July 2016, p. 1, 3; [Syria Crisis, Bi-Weekly Situation Report No. 09](#), 18 July 2016, p. 3.

<sup>4</sup> OCHA, [Syria Crisis, Bi-Weekly Situation Report No. 10](#), 1 August 2016, p. 1, 5; [Syria Crisis, Bi-Weekly Situation Report No. 11](#), 19 August 2016, p. 1-4; [Syria Crisis, Bi-Weekly Situation Report No. 12](#), 2 September 2016, p. 1, 4; [Syria Crisis, Bi-Weekly Situation Report No. 13](#), 19 September 2016; REACH, [Situation Overview: Intentions and Needs in Eastern Aleppo City](#), 18 August; REACH [Situation Overview: Displacement and Needs in Eastern Aleppo City](#), 6 September.

## DISPLACEMENT TRENDS: FIGURES

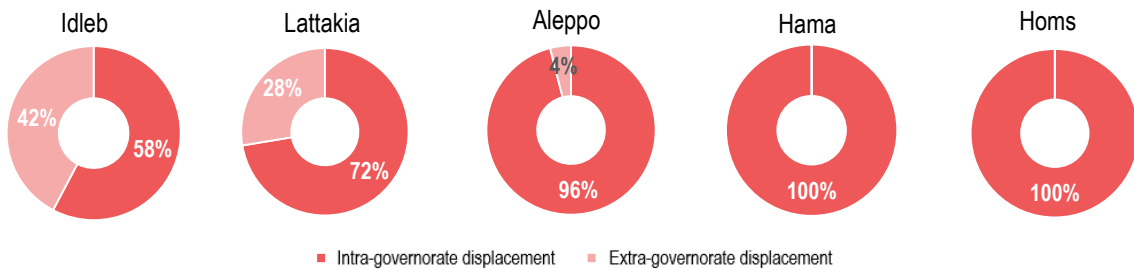
As of 2 September 792,727 IDPs have been identified by CCCM members and partner organisations across 491 communities in assessed areas of Aleppo, Hama, Homs, Idleb and Lattakia governorates.



- The number of identified IDPs in assessed areas increased by 67% from 474,628 in January to 792,727 IDPs at the beginning of September 2016. This increase is partly attributed to a number of escalations in conflict throughout this period, most notably in Aleppo and Idleb city, A'zaz and Menbij, as well as in Hama and Homs governorates.
- The largest number of IDPs was identified in Idleb governorate, at 467,393 individuals or 59% of identified IDPs. Another 279,024 IDPs were identified in Aleppo (35%), 31,031 IDPs (4%) were identified in Hama, 9,084 (1.2%) in Lattakia and 6,195 (0.8%) in Homs. Although relative stability in parts of Idleb creates a pull factor for IDPs, this also enables a wider number of humanitarian actors to assess the area and therefore enhances the level of information that exists compared to other less accessible areas.

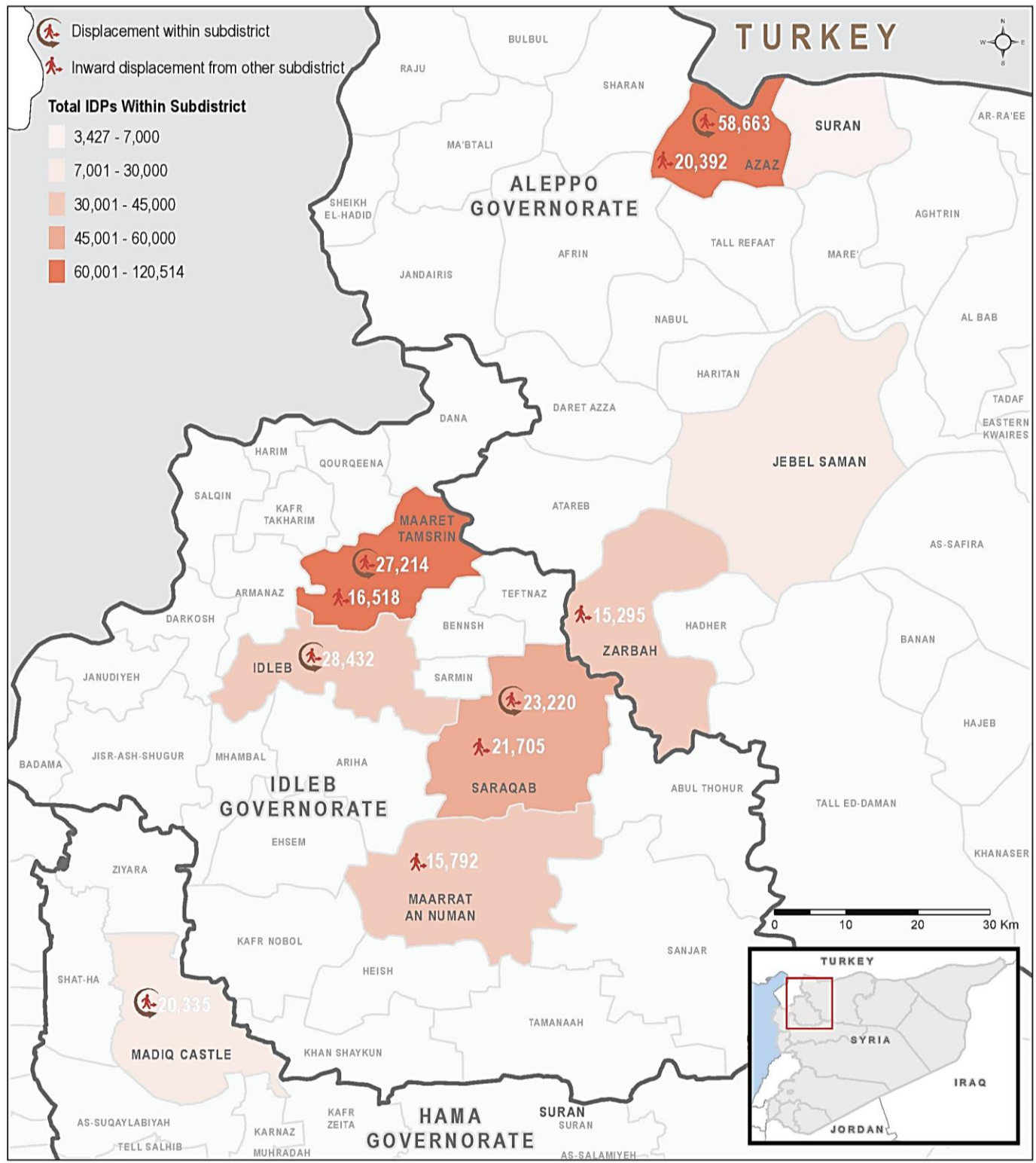
## DISPLACEMENT TRENDS: PATTERNS

Figure 1: Proportion of intra- vs. extra-governorate displacement, by governorate of displacement



- Recorded displacement between January and beginning of September 2016 is primarily intra-governorate displacement. In all five governorates assessed, the majority of identified IDPs have been displaced within their governorate of origin (see Figure 2).
- However, a considerable proportion of IDPs in Idleb (42%) and Lattakia (28%) governorate also arrived from other governorates (see Figure 1). The largest proportion of extra-governorate IDPs in Idleb was displaced from Hama (66%), followed by Aleppo (18%) and Homs (10%), while the remaining extra-governorate IDPs are from Lattakia (5%), Ar-Raqqa (1%) and Deir-ez-Zor (>1%) governorates. Meanwhile, 28% of IDPs in Lattakia have been displaced from Idleb governorate. Extra-governorate IDPs in Aleppo are from Idleb (59%), Ar-Raqqa (33%), Deir-ez-Zor (5%) and Homs (3%).

Map 1: Ten largest reported IDP movements as of 2 September 2016



- The five largest IDP movements in terms of IDP numbers as of 2 September 2016 occurred within individual sub-districts (see Map 1). The single largest movement occurred within A'zaz sub-district (58,663), followed by movements within Idleb sub-district (28,432 IDPs). These appear to align with developments in conflict dynamics, with serious escalations occurring in A'zaz since April 2016, and an intensification of aerial bombardment on Idleb city starting in June 2016 causing temporary displacements to nearby towns and villages.

## DISPLACEMENT DYNAMICS

### Areas of origin

- The **792,727 IDPs** identified as of 2 September have been **displaced from at least 322 communities in 71 sub-districts** in Aleppo, Ar-Raqqa, Deir-ez-Zor, Hama, Homs, Idlib and Lattakia governorates. The **single largest displacement occurred from Idlib city in Idlib sub-district**, with 104,786 IDPs. This is more than double the next largest displacement, originating from Kafr Nabutha community in Madiq Castle sub-district (48,944 IDPs).
- Idlib sub-district is origin of the largest number of IDPs, at 133,935 IDPs, or 17% of all IDPs identified** (see Table 1). Overall, **70% of all IDPs** identified as of 2 September **originate from the ten most common sub-districts of origin** (see Table 1).

Table 1: Ten most common sub-districts of origin

Governorate of origin	Sub-district of origin	# of IDPs 2 September
Idlib	Idlib	133,935
Hama	Madiq Castle	79,577
Aleppo	A'zaz	75,904
Aleppo	Jebel Saman (Aleppo)	65,858
Hama	Suran	51,120
Aleppo	Menbij	39,667
Idlib	Jisr-Ash-Shugur	36,225
Idlib	Maaret Tamsrin	27,214
Aleppo	Mare'	23,563
Idlib	Saraqab	23,294
Total		556,357

**17% of IDPs** identified as of 2 September 2016 originate from Idlib sub-district

**70% of IDPs** identified as of 2 September 2016 originate from these ten sub-districts

### Locations hosting IDPs

- The 792,727 IDPs identified as of 2 September have been **displaced to 491 communities in 52 sub-districts** across the assessed areas of the Northern governorates of Aleppo, Hama, Homs, Idlib and Lattakia.
- Over half (59%) of all identified IDPs are living in only ten sub-districts**, six in Idlib, three in Aleppo and one in Hama governorate (see Table 2). **Of all IDPs identified in assessed areas 15% have been displaced to A'zaz sub-district in Aleppo governorate.**

Table 2: Ten most common sub-districts of displacement

Governorate of displacement	Sub-district of displacement	# of IDPs 2 September
Aleppo	A'zaz	120,514
Idlib	Maaret Tamsrin	62,885
Idlib	Saraqab	47,119
Idlib	Dana	46,961
Idlib	Idlib	39,834
Aleppo	Atareb	38,610
Idlib	Ma'arrat An Nu'man	32,243
Aleppo	Zarbah	30,132
Hama	Madiq Castle	26,902
Idlib	Heish	24,653
Total		469,853

**15% of IDPs** identified as of 2 September 2016 displaced to A'zaz sub-district

**59% of IDPs** identified as of 2 September 2016 displaced to ten sub-districts

