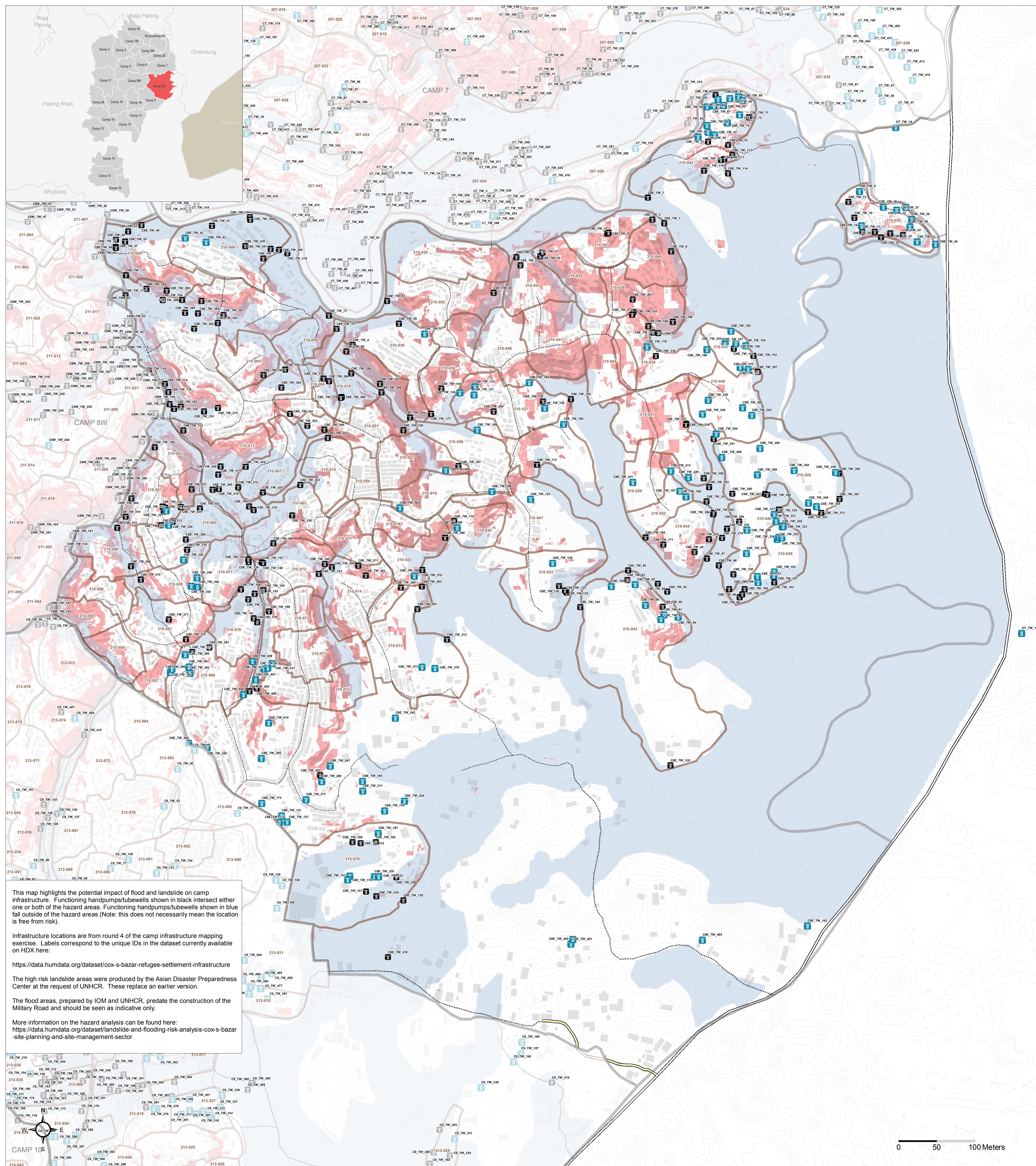


BANGLADESH - Rohingya Refugee Crisis - Cox's Bazar District

Camp 8E - Potential Risk to Handpumps and Tubewells

For Humanitarian Purposes Only
Production date: 19 March 2018



Handpumps / Tubewells

- Functioning Handpump / Tubewell Not Within Hazard Area
- Functioning Handpump / Tubewell Within Hazard Area

High Risk Landslide Areas

- Unstable / Critical Unstable
- Nearly Unstable / Relatively Unstable
- Flood Area
- Elevation Contours (1m)

- Camp Boundaries
- Majhee Blocks
- Shelter Footprints
- Highway
- Military Road / Vehicle Road
- Main Path
- Footpath

Data Sources:

- Camp Infrastructure - REACH
- Landslide Risk - ADPC / UNHCR
- Flood Areas - ADPC / UNHCR / IOM
- Elevation Contours - IOM
- Shelter Footprints - REACH / UNOSAT
- Roads / Footpaths - ISCG / REACH
- Camp / Majhee / Admin Boundaries - ISCG / IOM / OCHA

Coordinate System: WGS 1984 UTM Zone 46N
Projection: Transverse Mercator
Contact: reach.mapping@impact-initiatives.org

Note: Data, designations and boundaries contained on this map are not warranted to be error-free and do not imply acceptance by the REACH partners, associates, donors mentioned on this map.

In support of the



Funded by



In partnership with

