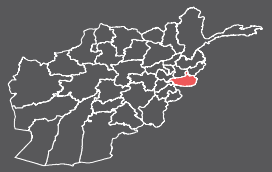




Informal Settlement Profile: Durkhan Mina

Surkhrod District, Nangarhar Province, Afghanistan

November 2016



Background

This profile provides an overview of conditions in the informal settlement **Durkhan Mina**, located in Surkhrod district, Nangarhar province. This settlement is **rural** and its residents live in **full mud houses**.

Key Figures

	Households (HH)	Individuals	Avg HH Size
Current residents	650	4,500	6.9
IDPs	200	1,400	7.0
Returnees	450	3,150	7.0

Size of settlement	453,145 sq m
Average area per person	101 sq m
Altitude	592 m

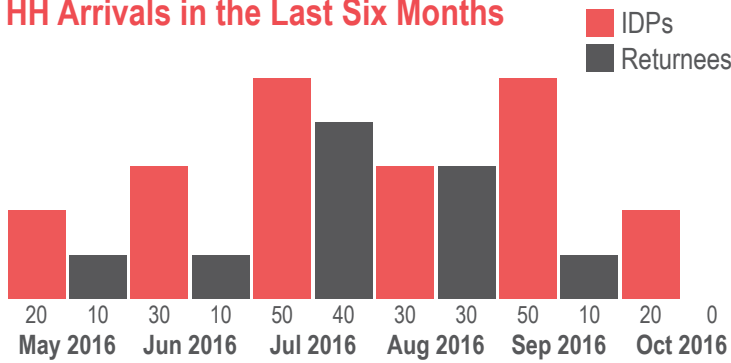
Displacement

This informal settlement is in the city of Jalalabad, on land owned by the Government of Afghanistan. Residents do not pay rent. The population consists of returnees from Pakistan and IDPs from Nangarhar, Kunar and Laghman, all of whom are Pashtun.

The settlement was established in 2002 by 59 households returning from the FATA region of Pakistan. In 2005, an additional 50 households entered the site, with IDPs travelling from Khogyani, Nangarhar and returnees moving from Peshawar, Pakistan. A third influx consisted of 200 returnee households, moving again from Peshawar in 2008. In 2012, the site expanded by 41 returnee households from the FATA region. The site then remained stable until 2016, when new residents joined the site, consisting of 200 IDP households from Laghman and Kunar, and 100 returnee households from Punjab, Pakistan.

Nearly all residents reportedly plan to stay in Durkhan Mina as it provides a general sense of security and close proximity to work in the city.

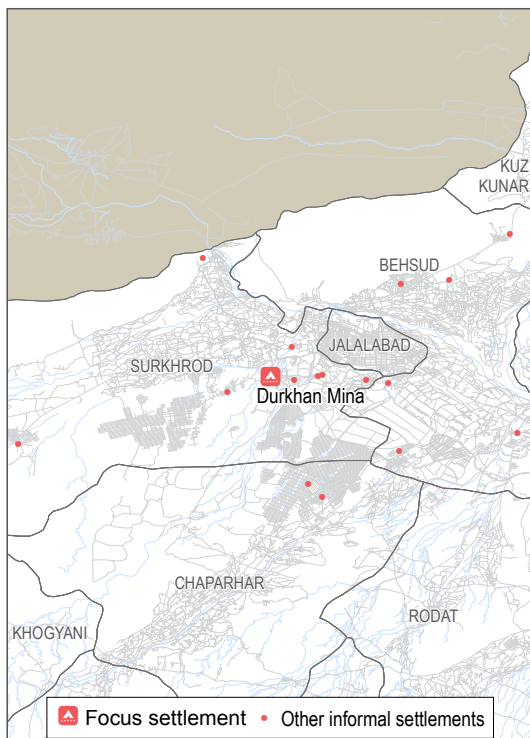
HH Arrivals in the Last Six Months



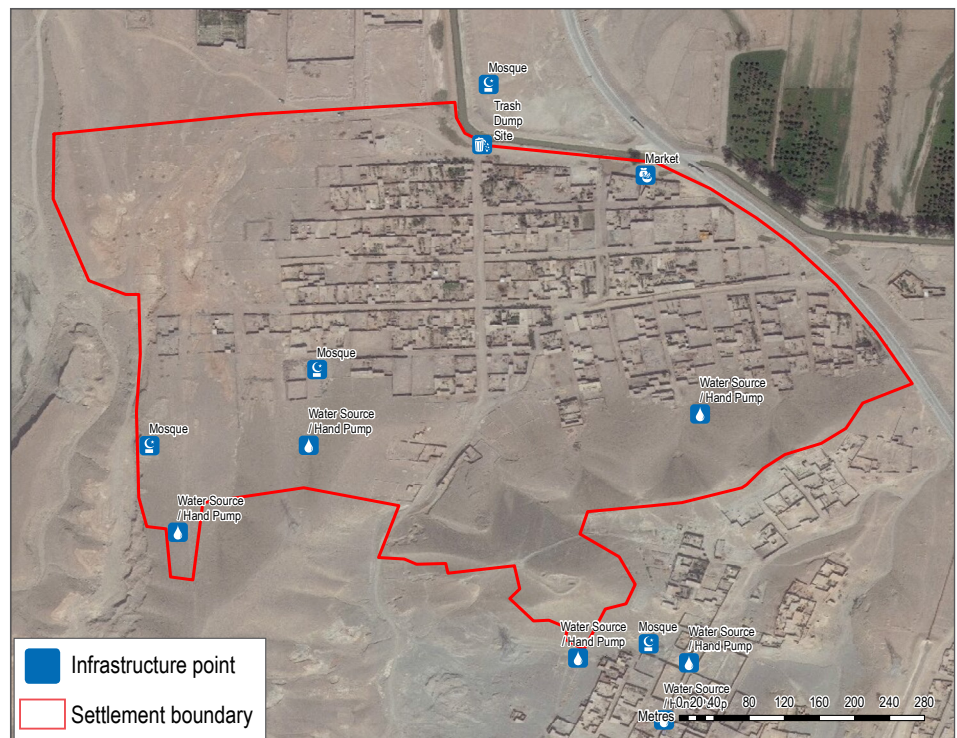
Previous Areas of Residence



Location Map



Informal Settlement Map



Lat. N 34.40945 Long. E 70.39663