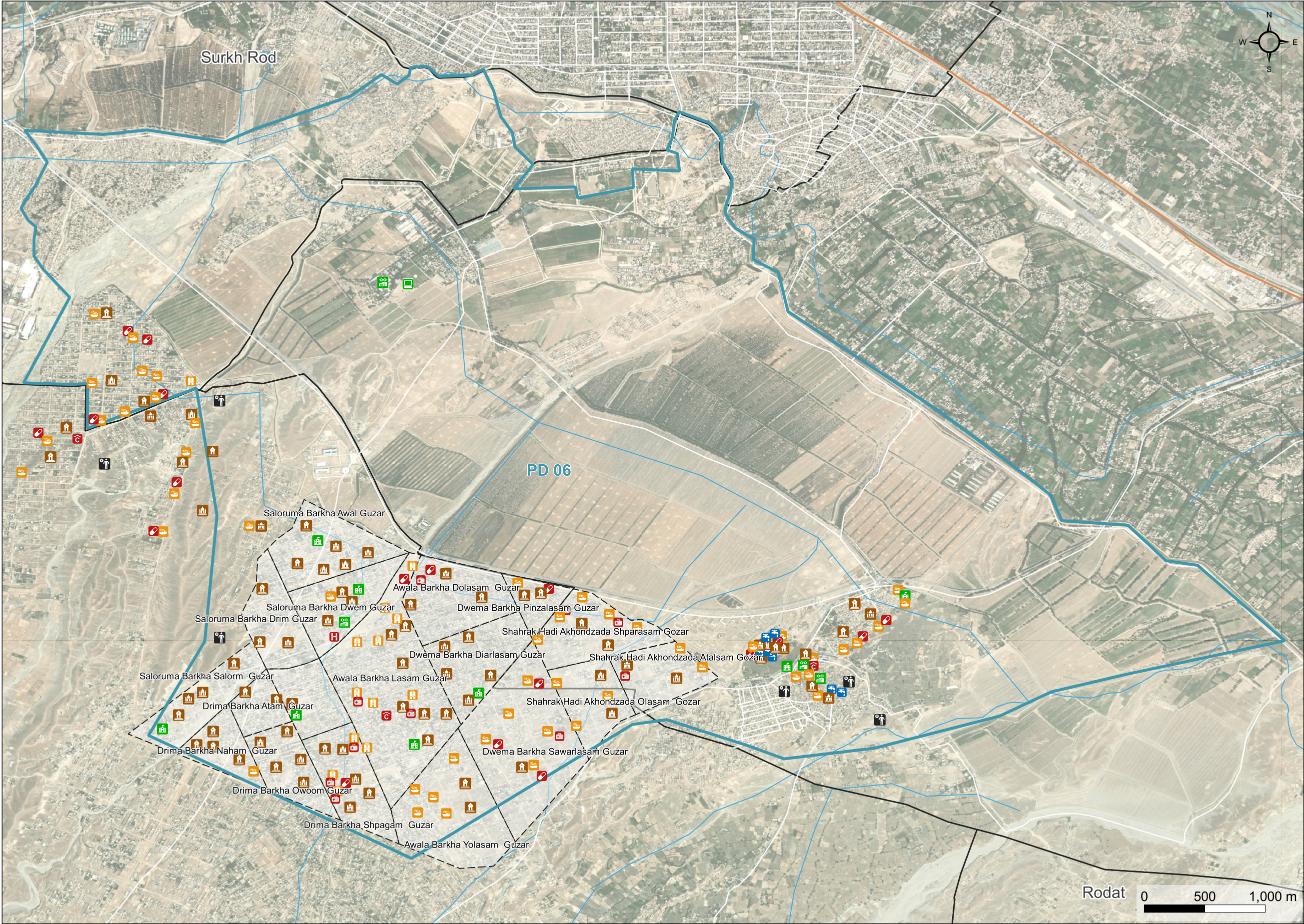
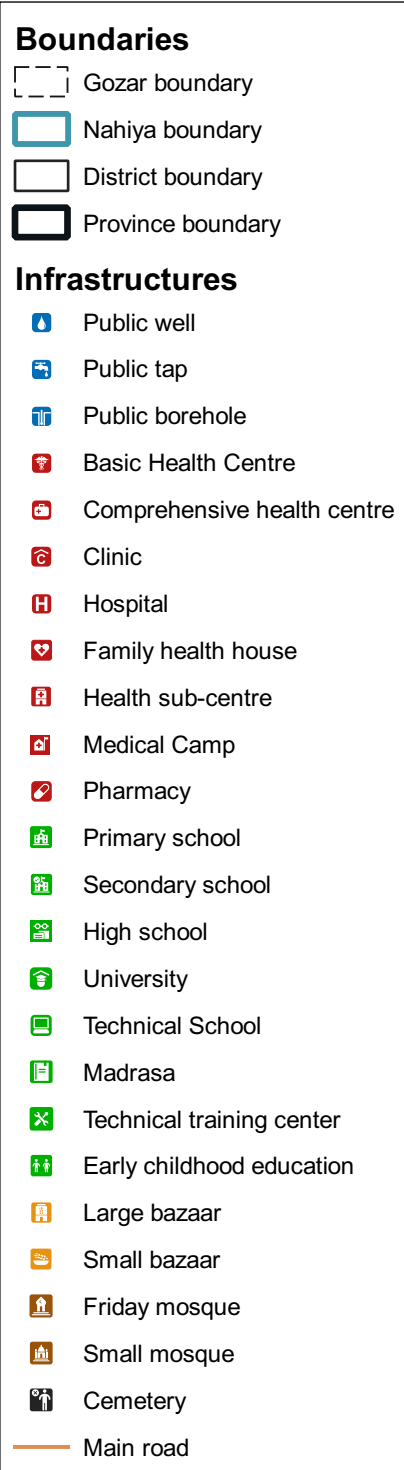


Jalalabad District - PD 06 / ABR infrastructure mapping - December 2021

Production date : 17-May-2022



Data sources:
 ISet boundary and Infrastructures: REACH
 Admin Boundaries and roads: AGCHO
 Coordinate System: GCS WGS 1984
 Contact: reach.mapping@impact-initiatives.org

Imagery:
Satellite Imagery: Maxar (WV03) from 17 November 2019
Copyright: ©2019 DigitalGlobe
Source: ESRI
File:
REACH_AFG_Map_ABR_infrastructure_mapping_Nang
arhar_Jalalabad_PD 06_17May2021_A3L

Definition:
Gozar: Urban unit denoting a community, analogous to a neighbourhood

Note: Data, designations and boundaries contained on this map are not warranted to be error-free and do not imply acceptance by the REACH partners, associates, donors mentioned on this map.