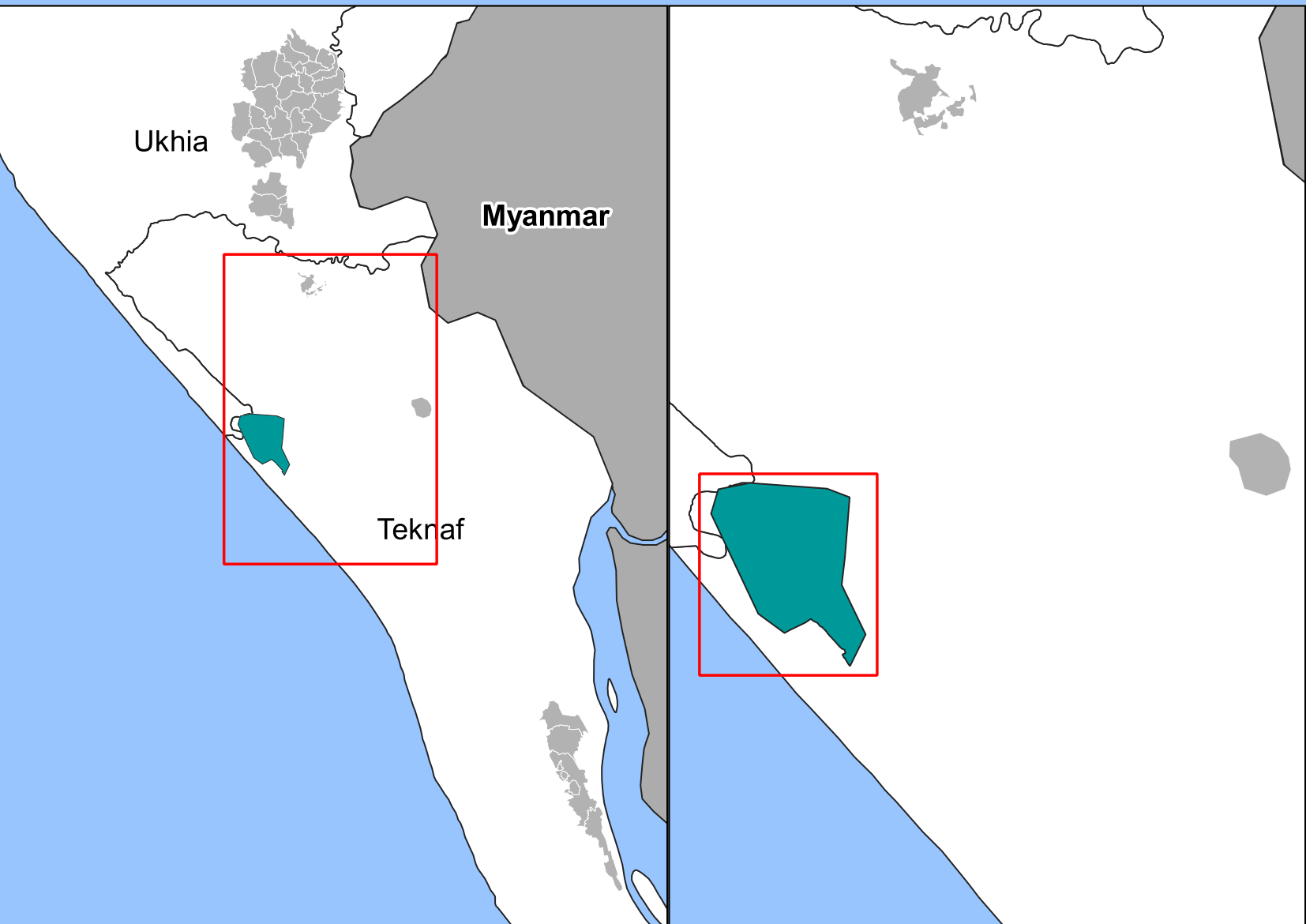
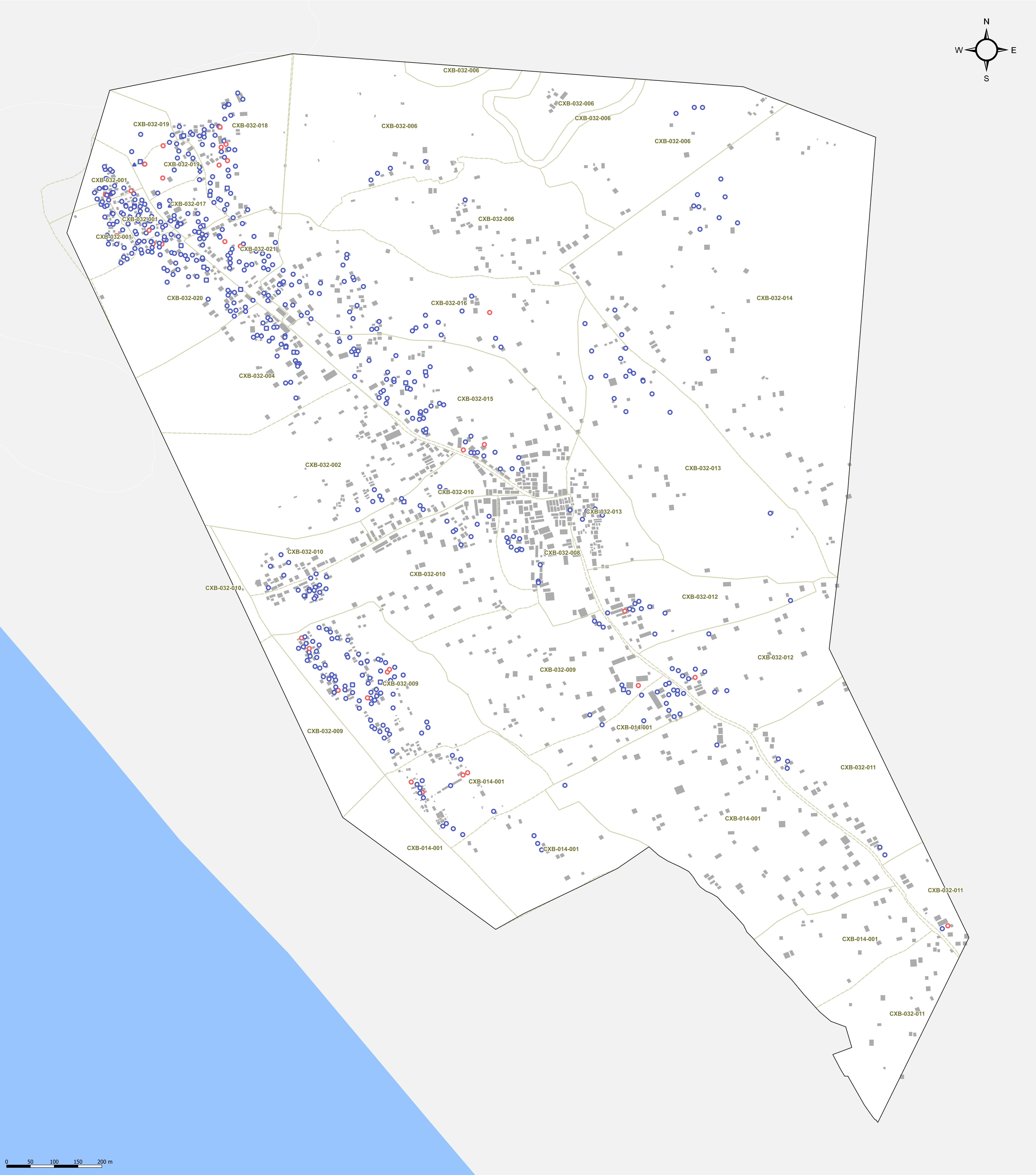
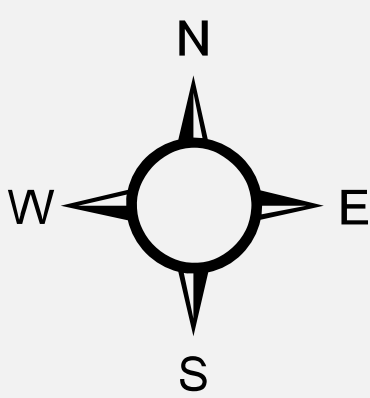


BANGLADESH - Rohingya Refugee Crisis - Cox's Bazar District
Camp 23 (Shamlapur) - Functioning and non functioning water structures -
Julv 2018

For Humanitarian Purposes Only
Production date: 06 August 2018



Functioning

- Tubewells
- ▲ Tapstand
- Water Tank
- ◇ Protected / Spring

Non Functioning

- Tubewell
- Water Tank

Boundaries

- Camps
- Mahjee blocks
- Shelters

In support of the



Funded by



Data Sources:
Camp Infrastructure - REACH
Shelter Footprints - OSM
Camp / Mahjee / Admin Boundaries - ISCG / IOM / OCHA

Coordinate System: WGS 1984 UTM Zone 46N
Projection: Transverse Mercator
Contact: reach.mapping@impact-initiatives.org

Note: Data, designations and boundaries contained on this map are not warranted to be error-free and do not imply acceptance by the REACH partners, associated, donors mentioned on this map.