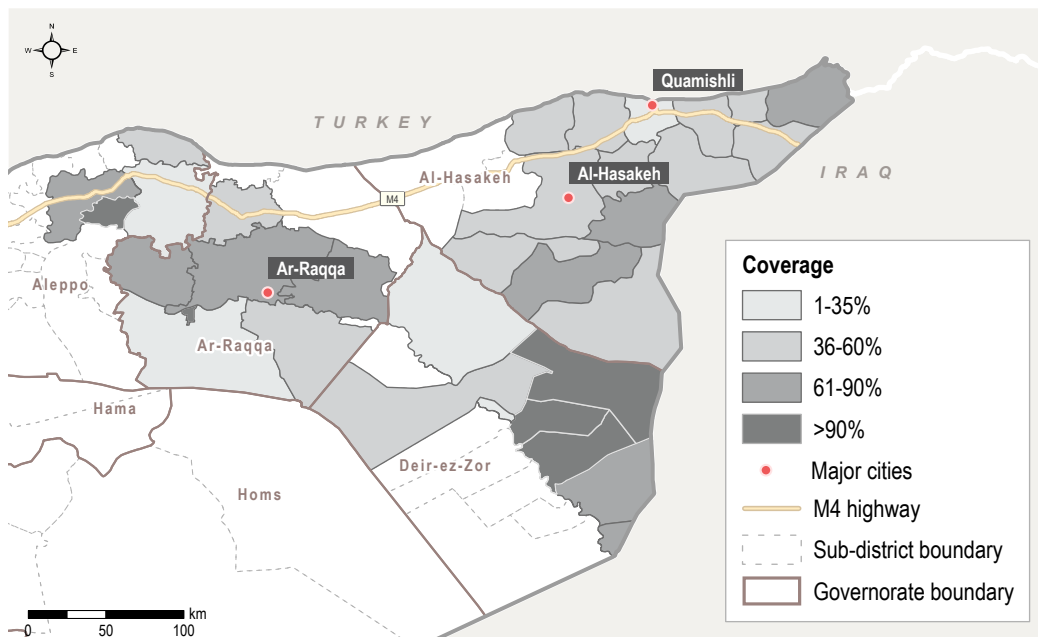


Introduction and Methodology

HSOS is a monthly assessment that provides comprehensive, multi-sectoral information about the humanitarian conditions and priority needs inside Syria. This factsheet presents a thematic review based on the HSOS assessment of the priority needs and humanitarian assistance, economic conditions, living conditions, access to basic services, COVID-19 situation, and the security and protection situation in Northeast Syria (NES). **Sector-specific indicator findings by location can be found on the [HSOS dashboard](#).**

The assessment is conducted using a key informant (KI) methodology at the community level. REACH enumerators are based inside Syria and interview three to five KIs per assessed location, either directly or remotely (via phone). KIs are chosen based on their community-level and sector-specific knowledge. This factsheet presents information gathered in 1261 communities across Aleppo¹ (225 communities), Ar-Raqqa (275 communities), Al-Hasakeh (676 communities), and Deir-ez-Zor (85 communities). Data was collected between 3-14 October 2021 from 3,891 KIs (18% female). Unless specified by an endnote, all indicators refer to the situation in the 30 days prior to data collection. Findings are indicative rather than representative, and should not be generalized across the population and region. Findings that are calculated based on a subset of the community are indicated by the following footnote ♦, with each subset specified in the endnotes.

The **complete monthly HSOS dataset** is available on the [REACH Resource Centre](#).



Key Highlights

October HSOS findings highlight significant challenges for the population across Northeast Syria (NES), as the COVID-19 pandemic and reduced access to safe drinking water continue to impact the humanitarian situation of households.

- COVID-19 continued to spread in NES as over 7,000 new cases were recorded in October.** After a surge in recorded cases in August and a peak of over 500 daily cases by mid-September, registered cases of COVID-19 in NES fluctuated between 109 and 373 per day in October.^a However, the actual caseload was likely much higher as reported shortages of COVID-19 testing kits affected testing capacity.^b The healthcare sector continued to be under strain with overcrowded health facilities reported in 32% of assessed communities. Likewise, a lack of medicines and medical equipment at health facilities and a shortage of health workers were reported in 49%, and 9% of the assessed communities, respectively.

- The spread of COVID-19 negatively affected access to services and livelihoods.** In around 85% of the assessed communities, in-person education was not always available during the 30 days prior to data collection due to COVID-19-related school closures. Opening days and hours of markets were reportedly reduced because of COVID-19 mitigation measures in 51% of the assessed communities in Raqqa Governorate, and in 40% and 38% in Aleppo and Hasakeh Governorates, respectively. In over 75% of the assessed communities in NES, at least one of the available livelihoods sources was either partially or totally affected by COVID-19.

- The risk of water-borne diseases continued to increase as access to water remained problematic.** KIs in 72% of assessed settlements in NES reported that not all households had access to sufficient water. In Areesh Sub-district, KIs in all 25 assessed communities estimated that less than 20% of the population had access to sufficient water. Problems with drinking water quality were reported in 37% of the communities assessed in October. Concerningly, KIs in 12% of assessed communities reported that water was perceived to be making people sick. In Deir-ez-Zor Governorate, the proportion of communities reporting this problem increased from September to October^c, reaching a total of 45 out of 85 assessed communities (53%). According to Save the Children, NES is experiencing higher than average outbreaks of acute diarrhoea resulting from a lack of clean water.^d

HSOS Dashboard

For a breakdown of sector-specific indicators by location, please see the [HSOS dashboard](#). The interactive HSOS dashboard provides a monthly sectoral overview of key indicators disaggregated at the sub-district and community level.



Priority Needs and Humanitarian Assistance



Most commonly reported **first, second, and third** and **overall** priority needs for residents (by % of assessed communities)^{2,3}

	FIRST	SECOND	THIRD	OVERALL	
1	WASH ▲	Livelihoods	Livelihoods	Livelihoods	79%
2	Livelihoods	Healthcare	Healthcare	WASH	59%
3	Healthcare	WASH	Infrastructure	Healthcare	58%



Most commonly reported **first, second, and third** and **overall** priority needs for IDPs (by % of assessed communities)^{2,3}

	FIRST	SECOND	THIRD	OVERALL	
1	Livelihoods	Livelihoods	Livelihoods	Livelihoods	83%
2	Food	Healthcare	Healthcare	Healthcare	60%
3	WASH	Food	Food	Food	53%

% of assessed communities where some of the resident households were able to access humanitarian assistance



Yes: **17%**
No: **83%**

% of assessed communities where KIs reported the presence of the following types of assistance for residents⁴

1% | **Livelihoods**
0% | **WASH**
0% | **Healthcare**

% of assessed communities where some of the IDP households were able to access humanitarian assistance



Yes: **27%**
No: **73%**

% of assessed communities where KIs reported the presence of the following types of assistance for IDPs⁴

2% | **Livelihoods**
1% | **Healthcare**
24% | **Food**

Most commonly reported barriers that resident households faced in accessing humanitarian assistance (by % of assessed communities)^{4, ♦}

In communities where access to humanitarian assistance was reported

- Assistance provided was insufficient to cover all people **81%** **1**
- Assistance provided was not relevant to all needs **51%** **2**
- Quantity of assistance provided to households was insufficient **45%** **3**

In communities where no access to humanitarian assistance was reported

- No humanitarian assistance was available **94%**
- Not aware if assistance was available **4%**
- Perceived discrimination in provision of humanitarian **2%**

Most commonly reported barriers that IDP households faced in accessing humanitarian assistance (by % of assessed communities)^{4, ♦}

In communities where access to humanitarian assistance was reported

- Assistance provided was insufficient to cover all people in need **79%** **1**
- Assistance provided was not relevant to all needs **59%** **2**
- Quantity of assistance provided to households was insufficient **56%** **3**

In communities where no access to humanitarian assistance was reported

- No humanitarian assistance was available **97%**
- Perceived discrimination in provision of humanitarian **1%**
- Not aware if assistance was available **1%**

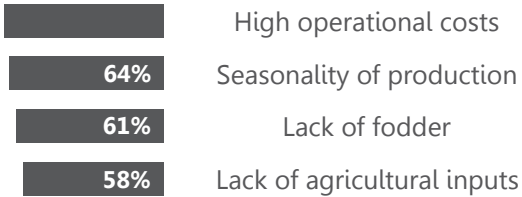


Economic Conditions

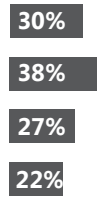
Region	Median estimated monthly household expense for water for a household of six ^{5,6}	Median estimated monthly rent price for a two bedroom apartment ^{5,6}	Median estimated daily wage for unskilled labour ^{5,7,8}
Northeast Syria	16,000 SYP	35,000 SYP	5,000 SYP
Aleppo	10,000 SYP	25,000 SYP	5,000 SYP
Al-Hasakeh	25,000 SYP	50,000 SYP	5,000 SYP
Ar-Raqqa	5,000 SYP	35,000 SYP	6,000 SYP
Deir-ez-Zor	25,000 SYP	40,000 SYP	5,000 SYP

Most commonly reported barriers to accessing livelihoods related to agriculture (by % of assessed communities) ⁴

Residents



IDPs



77% and 93%

% of assessed communities where KIs reported daily waged labour as a common source of income for residents and IDPs

84 days

Number of days the average day labourer would need to work to earn the monthly cost of basic SMEB[▲] items ^{5,9}

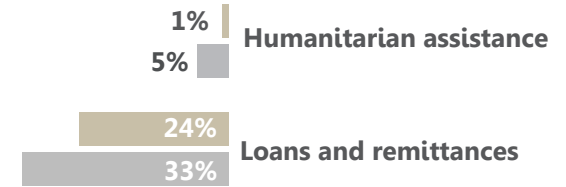
92% and 69%

% of assessed communities where KIs reported the insufficient income of households and lack of employment opportunities that match people's skills as barriers to meeting basic needs ⁸

% of assessed communities where common livelihood sources from agriculture were reported ⁴

Livelihood source	Residents	IDPs
Food crop production	44%	31%
Cash crop production	57%	5%
Livestock products	68%	31%
Sale of livestock	65%	30%

% of assessed communities where KIs reported the presence of residents and IDP households relying on non-productive sources of livelihoods to meet their basic needs ⁴



Intersectoral findings on unaffordability hindering access to goods and services



KIs in 24% of assessed communities cited that rent was unaffordable for the majority of people



KIs in 50% of assessed communities cited the high cost of fuel for generators as a common challenge



KIs in 69% of assessed communities cited the high cost of solar panels as a common challenge



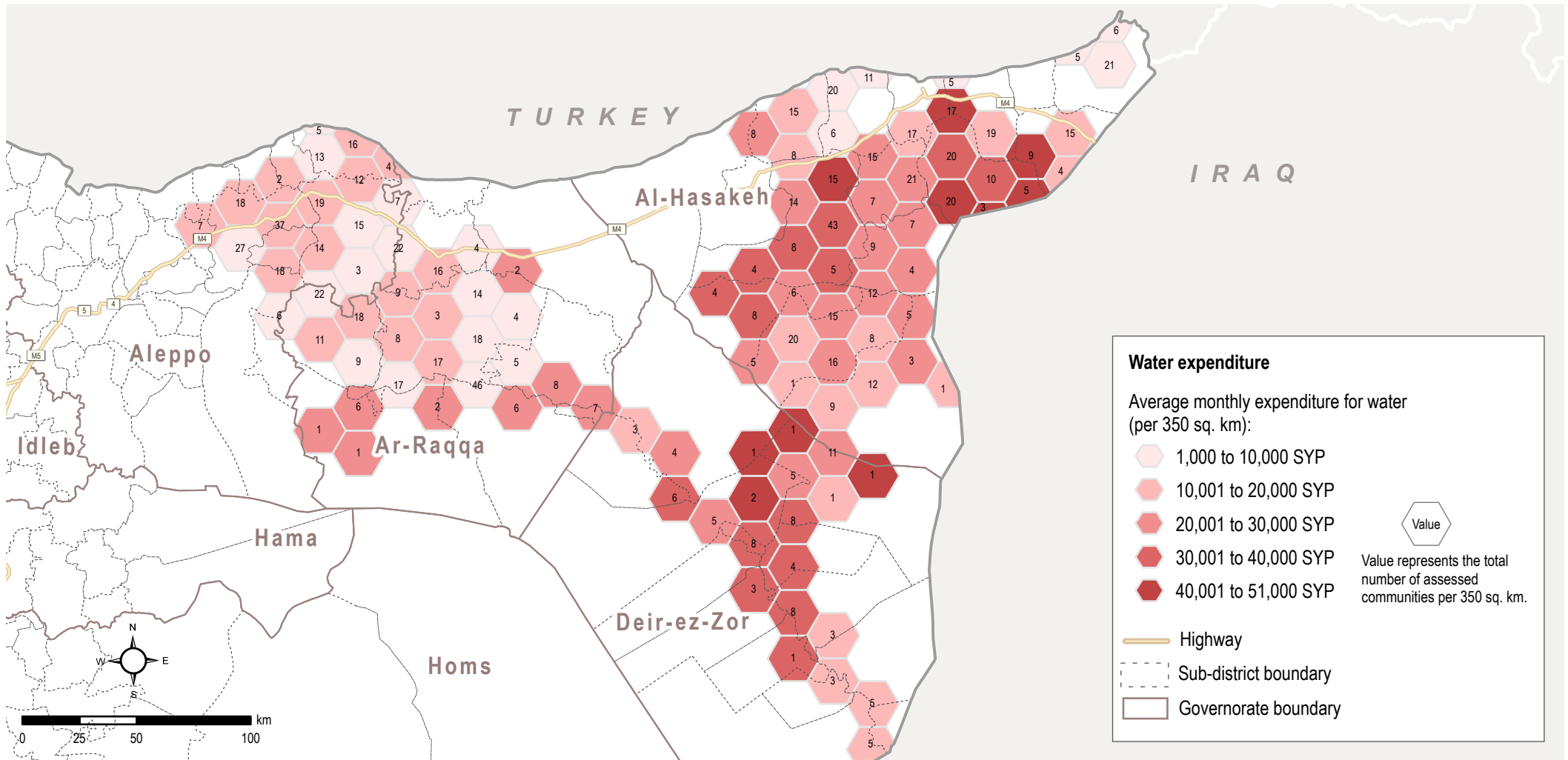
KIs in 43% of assessed communities cited the high cost of water trucking as a common challenge



KIs in 81% of assessed communities cited the high cost of food as a common challenge ⁸



KIs in 86% of assessed communities cited the high cost of health services as a common challenge



Average monthly expenditure for water (for a household of 6 people)

Note on the map
This map shows the median values of the average monthly expenditure for water for a household of 6 people. The sub-district with the highest median expenditure was Tal Hmis, in Al-Hasakeh governorate (50,000 SYP), while the lowest median expenditure was found in Sabka Sub-district, in Ar-Raqqa governorate (2'000 SYP). The median reported value for the entire region was 16'000 SYP. The highest monthly water expenditure, 80'000 SYP, was found in a community in Al-Hasakeh Sud-district.



Living Conditions

In **92%** of assessed communities at least **80%** of the resident population reportedly owned their shelter

In **81%** of assessed communities reportedly none of the IDP households owned their shelter

In **11%** of assessed communities at least one fifth of the IDP population reportedly lived in unfinished or abandoned residential buildings

In **9%** of assessed communities at least one fifth of the IDP population reportedly lived in tents



A lack of toilets was reported as a shelter issue for IDPs in **22%** of assessed communities



A lack of bathing facilities was reported as a shelter issue for IDPs in **14%** of assessed communities

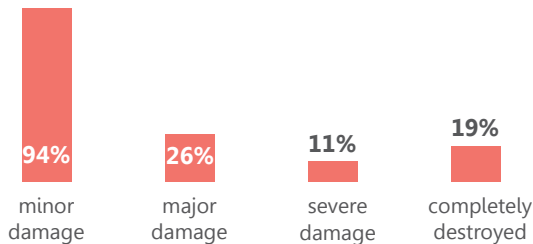


Problems with the drinking water were reported in **37%** of assessed communities



Water tastes bad was a commonly reported problem with drinking water (reported by KIIs in 23% of assessed communities)

Reported presence of occupied shelters with damage across communities where damages were reported (by % of assessed communities) ^{5,10}



Shelter and repair materials being too expensive was the most commonly reported challenge for households to repair their shelter (reported by KIIs in 95% of assessed communities) ⁴

Reported sanitation issues affecting public space in the community (by % of assessed communities) ⁴

Rodents and/or pests are frequently visible



Solid waste in the streets



Sewage system pollutes public areas



Stagnant water



Flooding in the streets



98%

% of assessed communities where KIIs reported that **households experienced barriers to accessing sufficient food** ⁸



In **17%** of these communities, KIIs reported that the **unavailability of certain food items** was a challenge to accessing sufficient food ⁸

Most commonly reported coping strategies for a lack of food (by % of assessed communities) ⁴

- 1 Borrowing money to buy food **78%**
- 2 Relying on less preferred food / lower food quality **73%**
- 3 Buying food with money usually used for other things **67%**



High price of suitable foods formula was the most commonly reported challenge to feeding young children (reported by KIIs in 96% of assessed communities) ^{4,11}

Commonly reported **sources of food** for households **other than markets** (by % of assessed communities) ⁴

- 1 Own production or farming **42%**
- 2 Relying on food stored previously **35%**
- 3 Food gifts from friends and family **17%**



Access to Basic Services



Access to Electricity

5-6 hrs per day

was the most commonly reported range for hours of electricity accessible to households (reported by KIs in 30% of assessed communities)

Main network

was the most commonly reported main source of electricity (reported by KIs in 75% of assessed communities)

69%

% of assessed communities where KIs reported **local authorities rationing electricity** as a barrier for electricity access



Access to Water

72%

% of assessed communities where KIs reported that **not all households had access to sufficient water**



7 days	21%
5-6 days	14%
3-4 days	20%
1-2 days	26%
0 days	19%

Days per week where water from the network was available (by % of 769 communities connected to a water network)

Private water trucking

was the most commonly reported source of drinking water (reported by KIs in 35% of assessed communities)

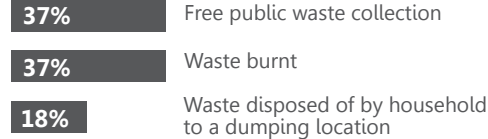


Access to Sanitation

79%

% of assessed communities where KIs reported that **no sewage system was present**

Most commonly reported ways people disposed of solid waste (by % of assessed communities)



26%

% of assessed communities where KIs reported waste removal services as a WASH priority need 8



Access to Markets

36%

% of assessed communities in which households reportedly were **unable to access markets in the assessed location**

People lack financial means to open shop/market

was the most commonly reported **reason for why markets were not functioning** (reported by KIs in 77% of assessed communities where markets were not functioning)

82%

% of assessed communities where KIs reported that the **lack of transportation to markets** was a barrier to physically accessing food markets

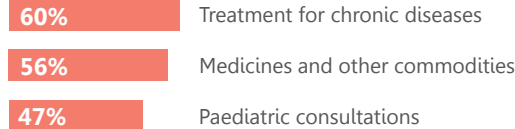


Access to Health Services

73%

% of assessed communities where KIs reported that the **households did not have access to health services in the assessed location**

Most commonly reported health priority needs (by % of assessed communities) 8



Going to the pharmacy instead of a clinic

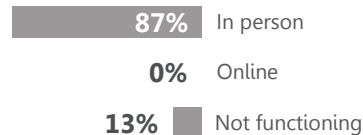
was the most commonly reported coping strategy for a lack of healthcare (reported by KIs in 91% of assessed communities)



Access to Education Services

34%
61%

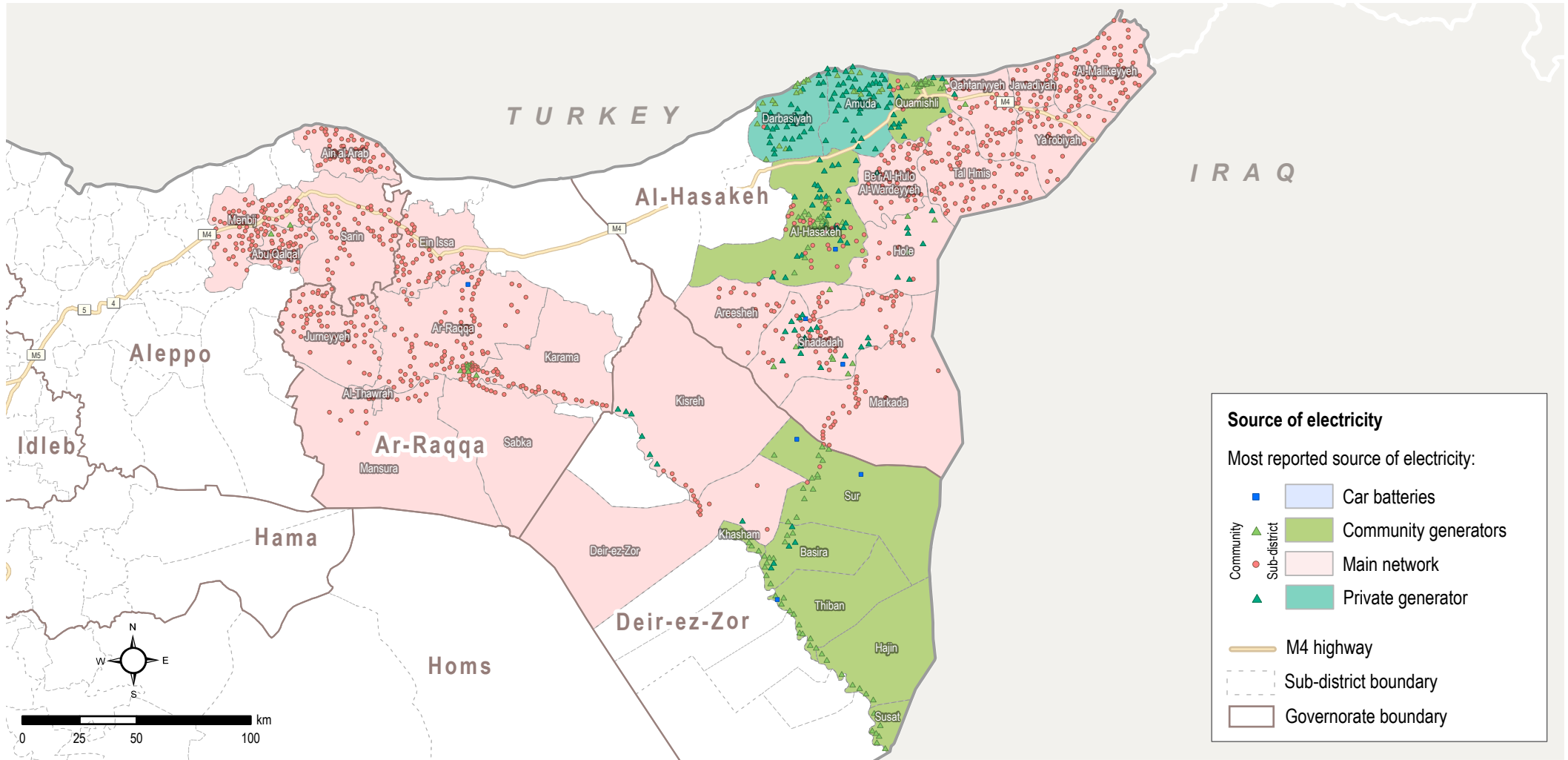
% of communities in which half or less of the school-aged children accessed school in the last 30 days for **residents** and IDPs



% of assessed communities where KIs reported on the functioning of education services in the assessed location 4

55%

% of assessed communities where KIs reported that the **high cost of transportation to school** was a barrier to accessing education services 8



Most common source of electricity

Note on the map

This map shows the most common source of electricity used by households in each assessed location, as reported by local KIs. The main network was the most commonly reported source of electricity, used by households in nearly all assessed communities in Aleppo and Ar-Raqqa governorates, and 66% and 60% of communities in Al-Hasakeh and Deir-ez-Zor. Concerningly, people in 7 of the assessed communities were reportedly primarily counting on car batteries as a source of electricity



COVID-19

Effects of COVID-19 on livelihoods sectors in the community (by % of assessed communities)

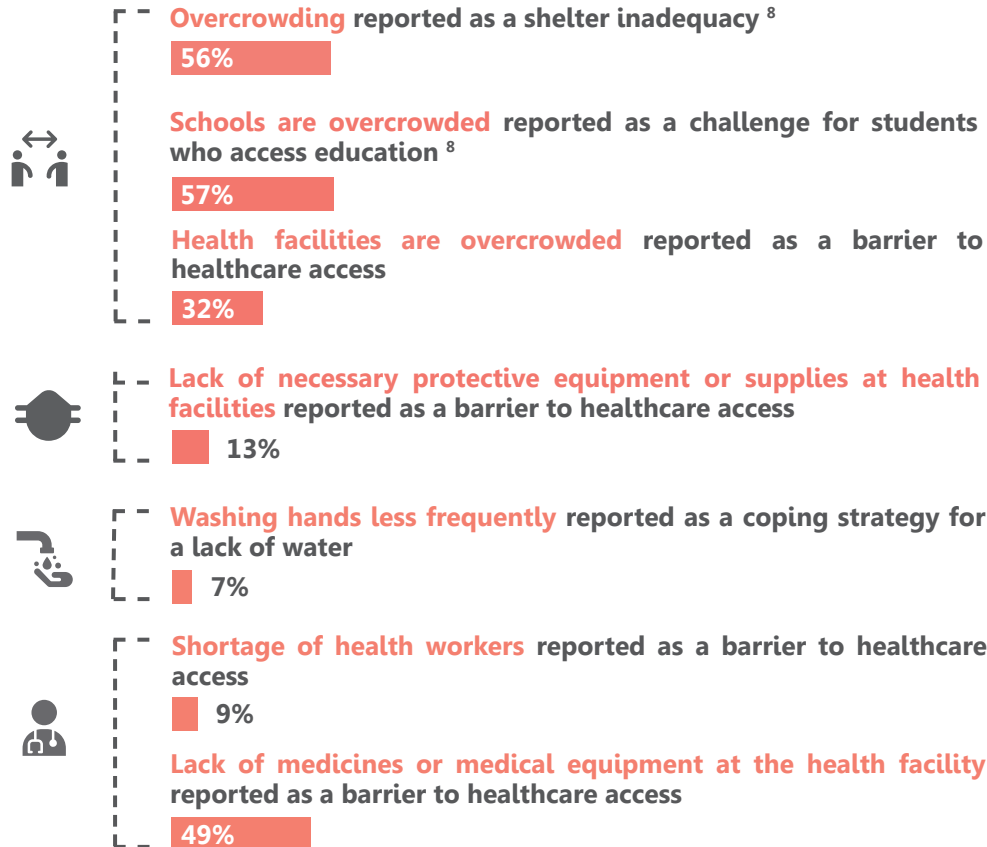


None of the available livelihood sectors were affected 23%
At least one of the available livelihood sectors was partially or totally affected 77%

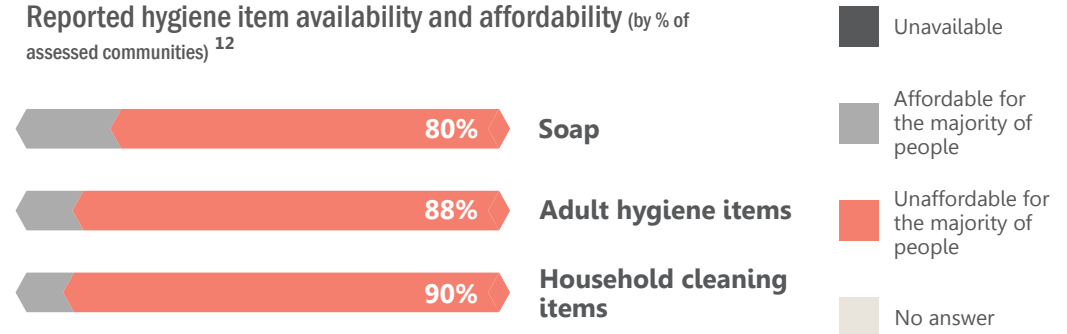
Most commonly reported sectors affected by COVID-19 (by % of assessed communities)



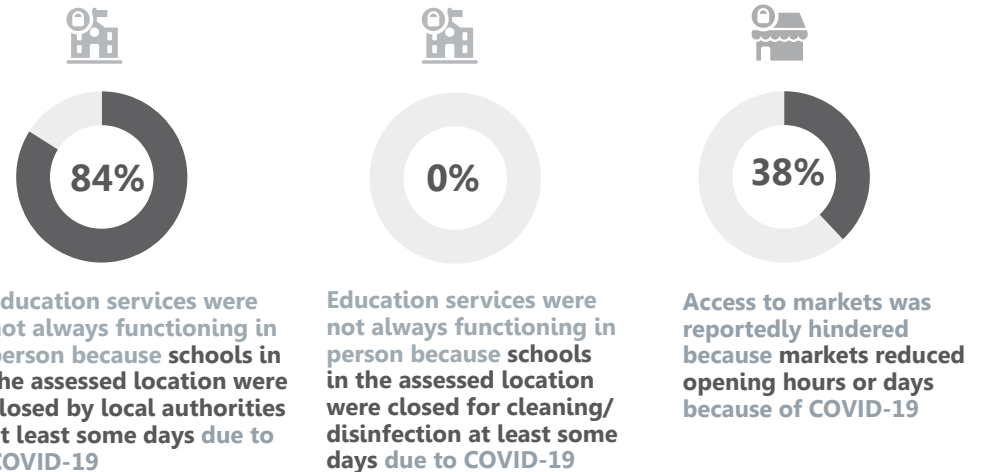
% of assessed communities where COVID-19 risk indicators were reported by KIs

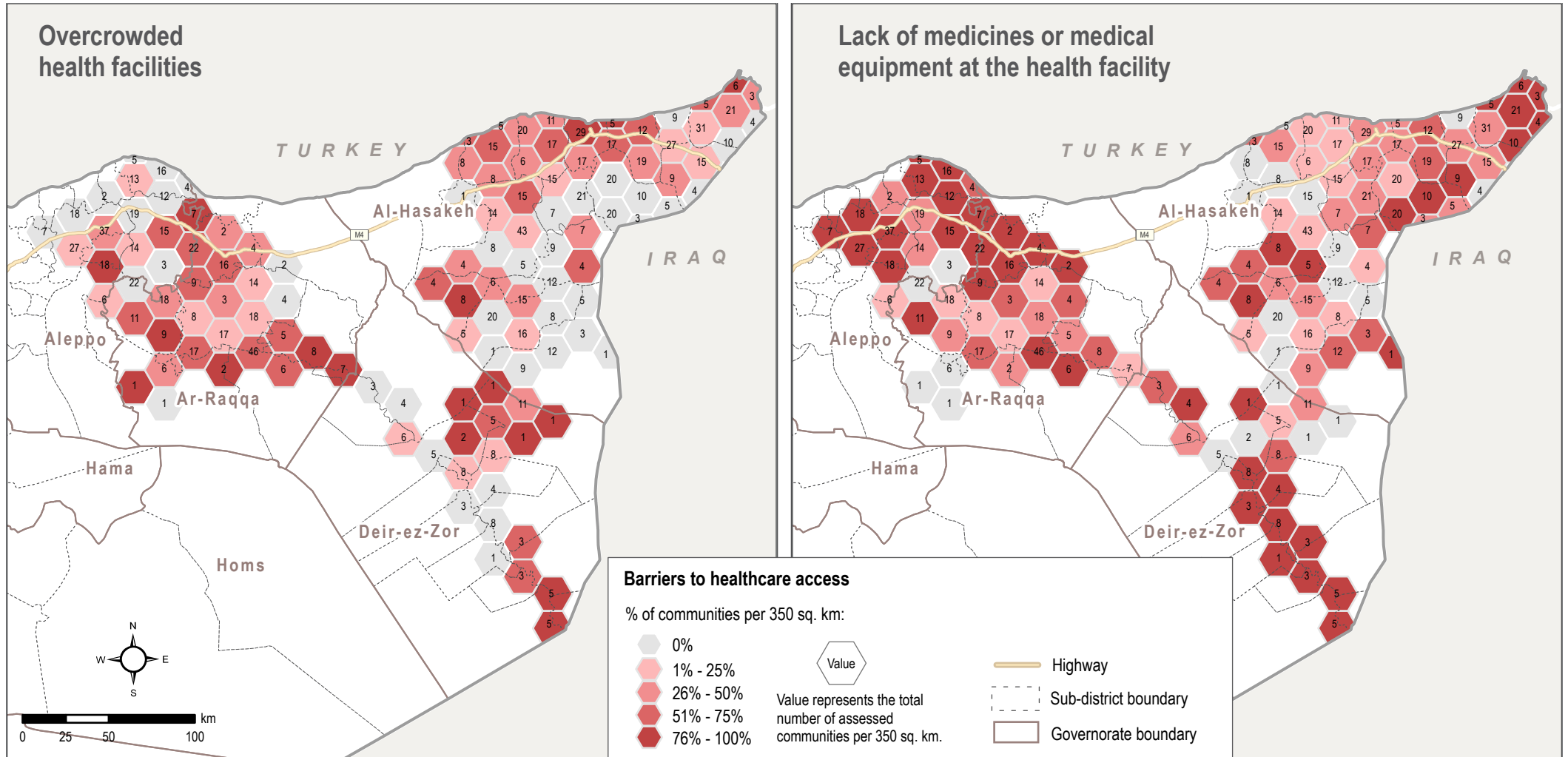


Reported hygiene item availability and affordability (by % of assessed communities)¹²



% of assessed communities where COVID-19 related barriers to access services were reported





Issues at Health Facilities Representing a Barrier to Accessing Healthcare

Note on the map

This map shows the percentage of communities where KIs indicated overcrowding at health facilities and the lack of medicines or medical equipment at health facilities as barriers to accessing healthcare. In Ar-Raqqa governorate, KIs in 44% of the assessed communities reported the issue of overcrowding at health facilities. In Aleppo governorate, health facilities reportedly lacked medicines or medical equipment according to KIs in 78% of locations.



Security and Protection

Intersectoral findings on security



General safety and security concerns restricting movement to markets was a reported barrier to market access in **129** communities

General safety and security concerns at markets was a reported barrier to market access in **41** communities

Movement restrictions was reported as a protection risk in **71** communities ⁸



Tribal disputes were reported as a protection risk in **46** communities ⁸

Threat from shelling was reported as a protection risk in **6** communities ⁸

Fear from imminent conflict was reported as a protection risk in **49** communities ⁸



The inability to lock homes securely was reported as a shelter inadequacy in **37%** of assessed communities ⁸

Lack of privacy inside the shelter was reported as a shelter inadequacy in **60%** of assessed communities ⁸

Lack of lighting around the shelter was reported as a shelter inadequacy in **81%** of assessed communities ⁸

The security situation was reported as a barrier to shelter repairs in **2%** of assessed communities



Safety and security concerns travelling to health facilities was reported as a barrier to healthcare in **44** communities

Most commonly reported protection priority needs (by % of assessed communities) ^{3,8}

- 1 83%** Special assistance for vulnerable groups
- 2 46%** Specialised child protection services
- 3 30%** Information about services

% of assessed communities where the lack of civil documentation for residents and IDPs was reported

- 17%** Lack or loss of civil documentation as a protection risk
- 18%** Some people did not have the necessary personal documents as a barrier to accessing humanitarian assistance [†]
- 3%** Lack of personal documentation required to enrol in school as a barrier to education access
- 2%**
- 0%**
- 1%**

% of assessed communities where extreme coping strategies used by residents and IDPs to meet basic needs were reported ⁴

Residents

- 18%** Early marriage
- 2%** Forced marriage
- 4%** High risk work
- 0%** Sending family members to beg
- 52%** Sending children (15 or below) to work

IDPs

- 22%**
- 3%**
- 2%**
- 3%**
- 66%**

Age, Gender, and Diversity

KIs in **39%** of assessed communities reported a **lack of employment opportunities for women** as a barrier to meeting basic needs ⁸

KIs in **23%** of assessed communities reported a **lack of employment opportunities for persons with a disability** as a barrier to meeting basic needs ⁸

KIs in **17%** of assessed communities reported a **lack of privacy for women and girls at health facilities** as a barrier to healthcare access

KIs in **20%** of assessed communities reported a **lack of market access for people with restricted mobility**

KIs in **8%** of assessed communities reported that **women and girls feel unsafe when traveling to markets**

Children below the age of 12 were reported as a group affected by child labour in **11%** of assessed communities ⁸

Hazardous child labour was reported as a protection risk in **35** communities ⁸

Endnotes

1. Aleppo governorate includes Menbij and Ain Al Arab districts. The rest of Aleppo governorate is included under Northwest Syria.
2. KIs were asked to select a first, second, and third highest priority needs in their communities. The ranking shows the sectors most frequently chosen as either first, second or third highest priority. The overall priority need refers to the frequency a sector was selected across all three categories (first, second or third highest priority).
3. KIs could select three answers, thus findings might exceed 100%.
4. KIs could select multiple answers, thus findings might exceed 100%.
5. KIs were asked about the situation at the time of data collection, instead of the last 30 days.
6. KIs had the option to select the price in United States Dollars (USD), Turkish Lira (TRY), or Syrian Pounds (SYP). When the price was not reported in SYP, the NES REACH Market Monitoring exchange rate was used to calculate the amount in SYP. According to the [REACH Market Monitoring](#) October 2021, 1 USD = 3,478 SYP; 1TRY= 390 SYP
7. According to the NES REACH Market Monitoring October 2021, 1 USD = 3,478 SYP.
8. Findings for residents and IDPs were merged. The merge was calculated as follows: (option was selected for either residents or IDPs) / (communities reporting challenges/barriers/coping strategies for either residents or IDPs).
9. According to the NES REACH Market Monitoring October 2021, the Survival Minimum Expenditure Basket (SMEB) = 419,536 SYP.
10. Minor damage (cracks in walls, leaking roof, need of new doors and window repairs, etc.); Major damage (buildings with extensive damage to window frames and doors, but no structural damage to columns, slabs, or loadbearing walls); Severe damage (buildings with significant structural damage to column slabs, or loadbearing walls, cracking, steel elements and deformations visible in concrete; the building would require extensive repairs); Completely destroyed (buildings with structural damage so significant that rehabilitation is not possible).
11. KIs were asked about the situation in the last two months, instead of the last 30 days.
12. Adult hygiene items include: shampoo, toothbrush, and toothpaste. Household cleaning items include: washing powder, liquid, and dish detergent.

◆ By number of communities where KIs reported the relevant indicator (access/barriers/inadequacies/damages/coping strategies/risks etc.) for the relevant population group(s)

<i>Indicator</i>	<i>Subset</i>	<i>Indicator</i>	<i>Subset</i>
<i>N.o of communities reporting on:</i>		<i>N.o of communities reporting on:</i>	
Residents	1259	Barriers to assistance access (IDPs)	468
IDPs	645	Barriers to accessing sufficient food (merge)	1230
Challenges to assistance access (resident)	209	Days when water is available from network	769
Barriers to assistance access (resident)	1047	Barriers to markets functioning	450
Challenges to assistance access (IDPs)	164		

Sources

- a. Kurdish Red Crescent. (10 November 2021). Northeast Syria COVID-19 Dashboard. [Link](#)
- b. Al Arabiya News. (22 November 2021). COVID-19 testing kits run out in northeast Syria: Official. Retrieved from <https://www.english.alarabiya.net>
- c. REACH. (November 2021). Humanitarian Situation Overview of Syria – Water and electricity trends dashboard. [Link](#)
- d. Al Jazeera. (19 October 2021). Water crisis plagues tens of thousands in northeast Syria: NGOs. Retrieved from <https://www.aljazeera.com>

About REACH

REACH facilitates the development of information tools and products that enhance the capacity of aid actors to make evidence-based decisions in emergency, recovery and development contexts. The methodologies used by REACH include primary data collection and in-depth analysis, and all activities are conducted through inter-agency aid coordination mechanisms. REACH is a joint initiative of IMPACT Initiatives, ACTED and the United Nations Institute for Training and Research - Operational Satellite Applications Programme (UNITAR-UNOSAT). For more information please visit our website: www.reach-initiative.org. You can contact us directly at: geneva@reach-initiative.org.