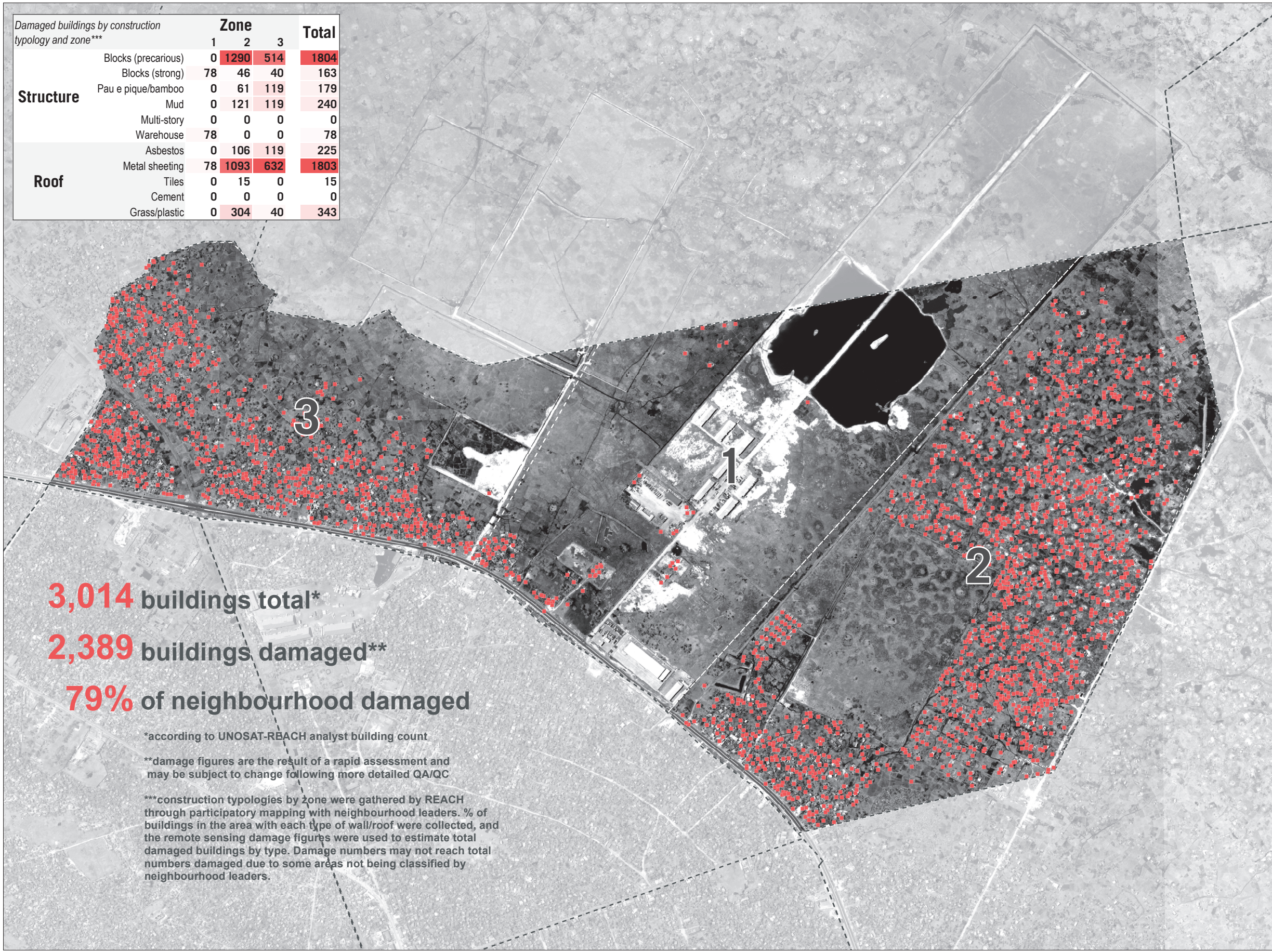


MOZAMBIQUE - Beira City

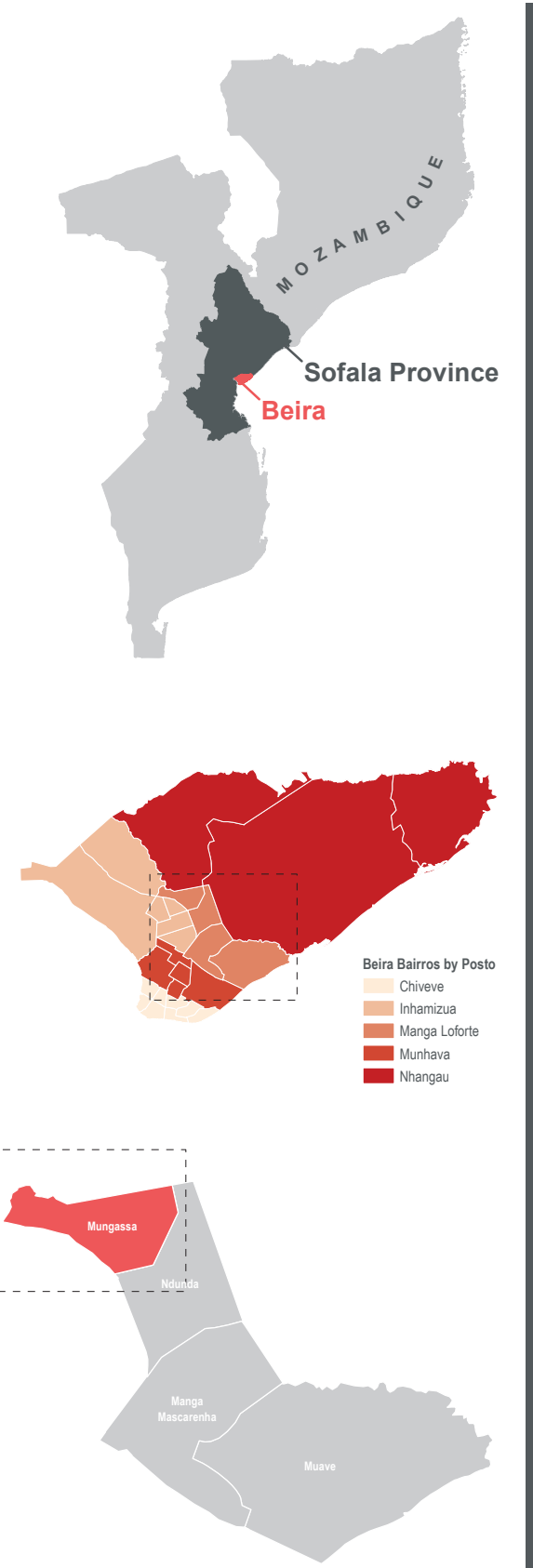
Mungassa - Structural Damage by Construction Typology - As of 26 March

Structure	Zone			Total
	1	2	3	
Blocks (precarious)	0	1290	514	1804
Blocks (strong)	78	46	40	163
Pau e pique/bamboo	0	61	119	179
Mud	0	121	119	240
Multi-story	0	0	0	0
Warehouse	78	0	0	78
Asbestos	0	106	119	225
Metal sheeting	78	1093	632	1803
Tiles	0	15	0	15
Cement	0	0	0	0
Grass/plastic	0	304	40	343



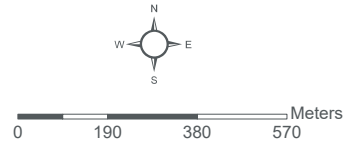
3,014 buildings total*
2,389 buildings damaged**
79% of neighbourhood damaged

*according to UNOSAT-REACH analyst building count
 **damage figures are the result of a rapid assessment and may be subject to change following more detailed QA/QC
 ***construction typologies by zone were gathered by REACH through participatory mapping with neighbourhood leaders. % of buildings in the area with each type of wall/roof were collected, and the remote sensing damage figures were used to estimate total damaged buildings by type. Damage numbers may not reach total numbers damaged due to some areas not being classified by neighbourhood leaders.



Data sources:
 Damage sites - UNOSAT-REACH
 Beira Bairros - INGC
 Bairros Delineation - REACH
 Administrative Boundaries (0-3) - OCHA
 Satellite Imagery: WorldView-2 from 26 March 2019
 Copyright: ©DigitalGlobe 2019
 Source: US Dept of State Humanitarian Information Unit, NextView License

Legend
 ■ Damaged Buildings
 - - - Bairros



Coordinate System: GCS WGS 1984
 File: MOZ_Map_Cycloneldai_Beira_DamageByType_Mungassa_30APR2019
 Contact: reach.mapping@impact-initiatives.org
 Note: Data, designations and boundaries contained on this map are not warranted to be error-free and do not imply acceptance by the REACH partners, associated, donors mentioned on this map.

Funded by
 European Union
 Civil Protection and
 Humanitarian Aid

REACH
 An initiative of
 IMPACT Initiatives
 ACTED and UNOSAT